

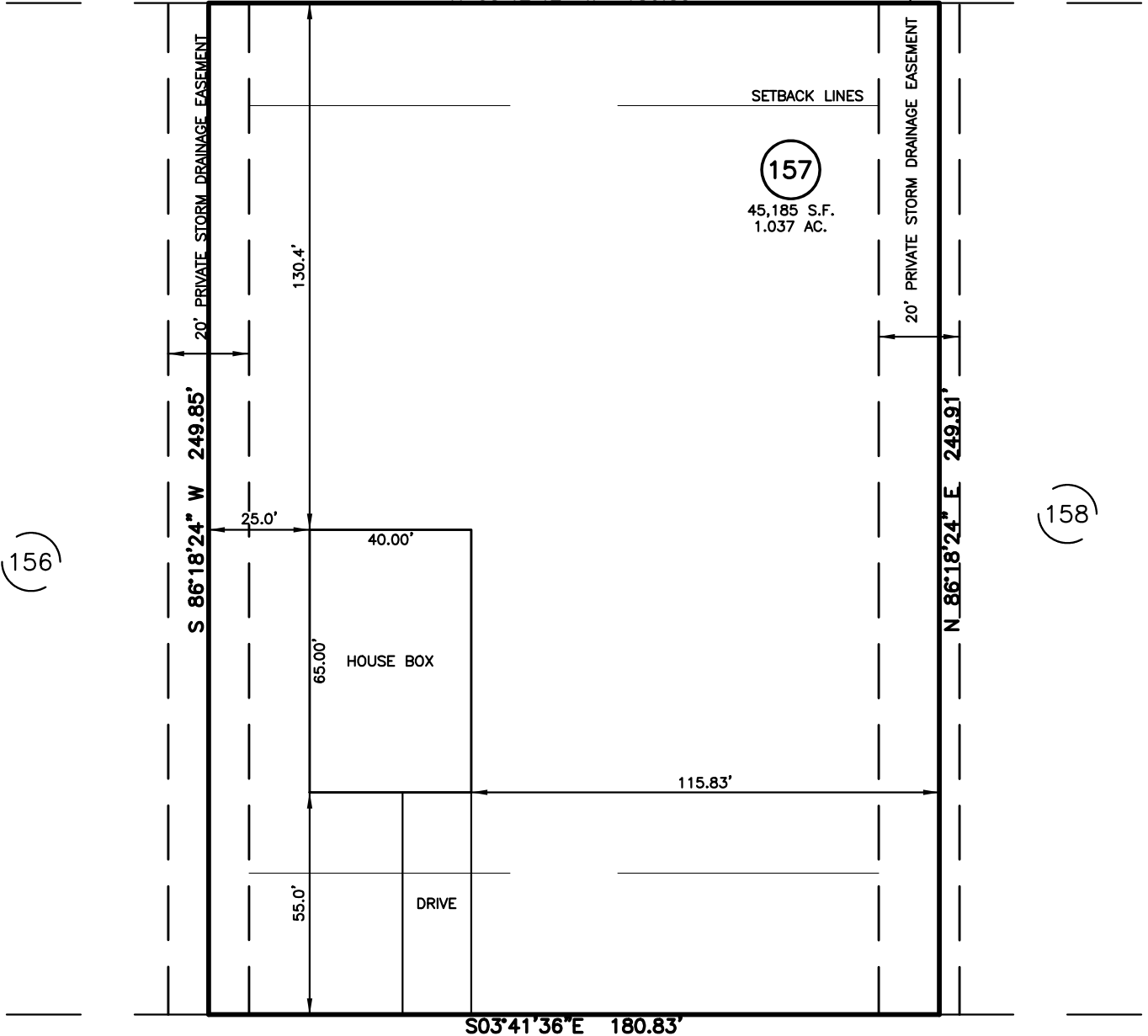
HOUSE FIT FOR  
**NEW HOME, INC.**  
 XXX DUNCAN CREEK ROAD  
 LOT 157, DUNCAN'S CREEK, PHASE 1  
 UPPER LITTLE CREEK TOWNSHIP, HARNETT COUNTY, NORTH CAROLINA

B.M. 2022, PGS. 594-596

N\F  
 JOSHUA E. & TERESA A. BRITTON  
 D.B. 1479, PG. 124  
 P.B. 2017, PG. 57

N\F  
 MAX MCCAULEY SR.  
 D.B. 785, PG. 904  
 P.B. 2002, PG. 1009

N 03°42'42" W 180.83'



DUNCAN CREEK ROAD  
 50' PUBLIC R/W

LEGEND

△ AIR CONDITIONER	INV. INVERT
BC BACK OF CURB	IPS IRON PIPE SET
BFP BACK FLOW PREVENTER	IRS IRON ROD SET
○ CLEANOUT	○ LIGHT POLE
■ CURB INLET	MNS MAGNETIC NAIL SET
DHS DRILL HOLE SET	⊗ MANHOLE SANITARY SEWER
ECM EXISTING CONCRETE MONUMENT	⊗ MANHOLE STORM SEWER
EDH EXISTING DRILL HOLE	OHW OVERHEAD WIRES
EIS EXISTING IRON STAKE	PKS PK NAIL SET
EIP EXISTING IRON PIPE	PNS POINT NOT SET
EM ELECTRIC METER	RRS RAIL ROAD SPIKE
EPK EXISTING PK NAIL	⊞ TELEPHONE PEDESTAL
ES ELECTRIC STUB	TRANSFORMER
FLARED END SECTION	CABLE TV PEDESTAL
⊞ FIRE HYDRANT	UTILITY POLE
⊞ FIBER OPTIC PEDESTAL	WATER METER
GM GAS METER	WATER VALVE
→ GUY	YARD INLET
	( ) FIELD MEASUREMENT

SETBACK INFO

FRONT: 35'  
 REAR: 25'  
 SIDES: 10'  
 CORNER SIDE: 20'

REFERENCES:

B.M. 2022, PGS. 594-596



SCALE: 1" = 40'

NOTES

1. THIS SURVEY SUBJECT TO ANY FACTS THAT MAY BE DISCLOSED BY A FULL AND ACCURATE TITLE SEARCH.
2. THIS MAP MAY NOT BE A CERTIFIED SURVEY AND HAS NOT BEEN REVIEWED BY A LOCAL GOVERNMENT AGENCY FOR COMPLIANCE WITH ANY APPLICABLE LAND DEVELOPMENT REGULATIONS AND HAS NOT BEEN REVIEWED FOR COMPLIANCE WITH RECORDING REQUIREMENTS FOR PLATS.

FOR REPRESENTATIVE PURPOSES ONLY  
 NOT FOR PERMITTING, RECORDATION,  
 CONVEYANCE OR SALES

HOUSE FIT  
 ONLY

DATE: AUG. 21, 2024

F.B. \_\_\_\_\_

**RWK, PA**

ENGINEERING ~ SURVEYING

CORPORATE LICENSE: C-1771  
 101 W. MAIN ST., SUITE 202  
 GARNER, NC 27529  
 PHONE (919) 779-4854  
 FAX (919) 779-4056