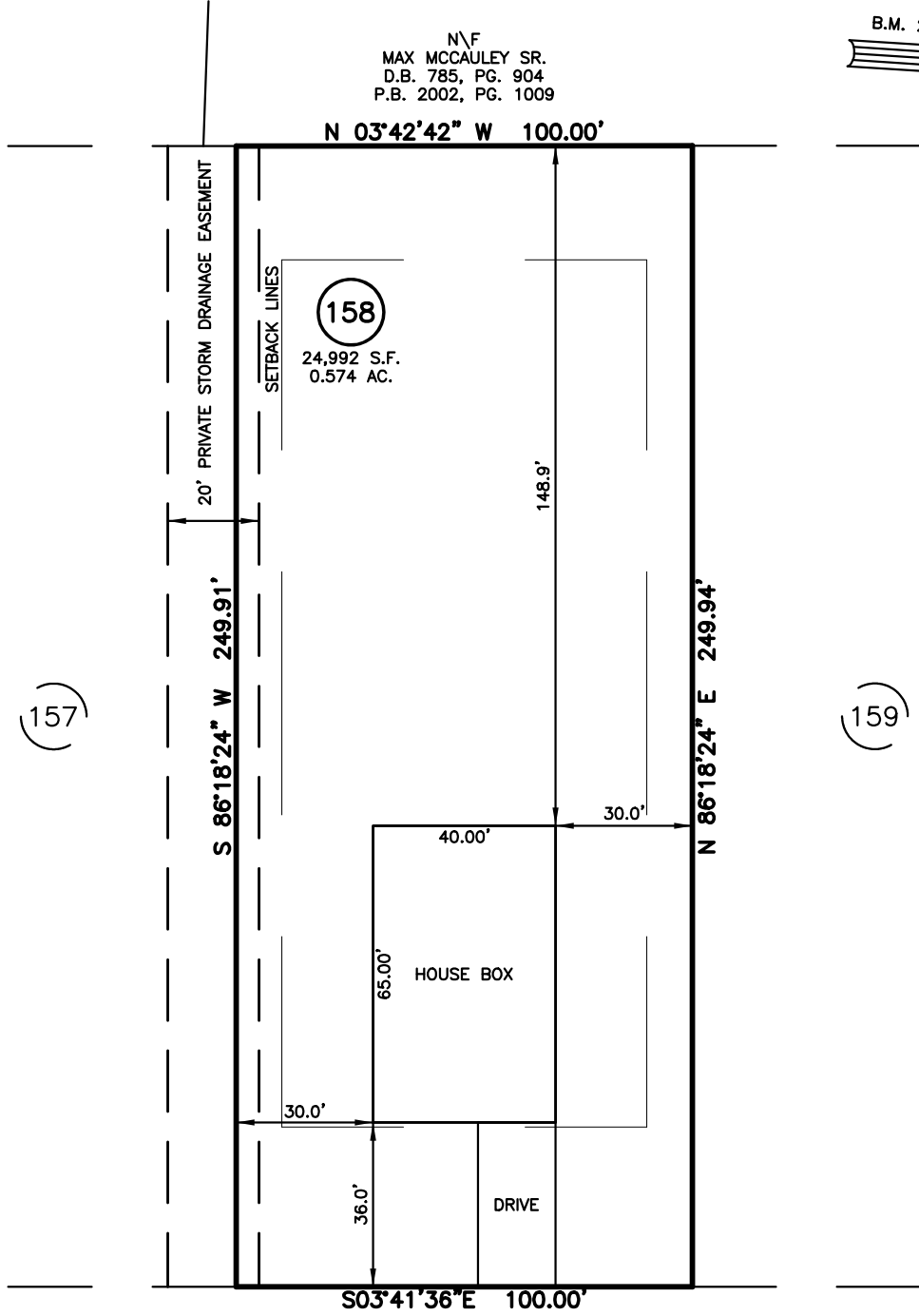
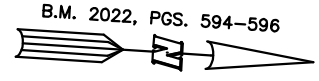


HOUSE FIT FOR  
**NEW HOME, INC.**  
 394 DUNCAN CREEK ROAD  
 LOT 158, DUNCAN'S CREEK, PHASE 1  
 UPPER LITTLE CREEK TOWNSHIP, HARNETT COUNTY, NORTH CAROLINA

N\F  
 MAX MCCAULEY SR.  
 D.B. 785, PG. 904  
 P.B. 2002, PG. 1009



**LEGEND**

- |                                |                           |
|--------------------------------|---------------------------|
| △ AIR CONDITIONER              | INV. INVERT               |
| BC BACK OF CURB                | IPS IRON PIPE SET         |
| BFP BACK FLOW PREVENTER        | IRS IRON ROD SET          |
| ○ CLEANOUT                     | Q LIGHT POLE              |
| ■ CURB INLET                   | MNS MAGNETIC NAIL SET     |
| DHS DRILL HOLE SET             | MS MANHOLE SANITARY SEWER |
| ECM EXISTING CONCRETE MONUMENT | MS MANHOLE STORM SEWER    |
| EDH EXISTING DRILL HOLE        | OHV OVERHEAD WIRES        |
| EIS EXISTING IRON STAKE        | PKS PK NAIL SET           |
| EIP EXISTING IRON PIPE         | PNS POINT NOT SET         |
| EM ELECTRIC METER              | RS RAIL ROAD SPIKE        |
| EPK EXISTING PK NAIL           | TP TELEPHONE PEDESTAL     |
| ES ELECTRIC STUB               | TR TRANSFORMER            |
| FLA FLARED END SECTION         | CTV CABLE TV PEDESTAL     |
| FHY FIRE HYDRANT               | UP UTILITY POLE           |
| FOP FIBER OPTIC PEDESTAL       | WM WATER METER            |
| GM GAS METER                   | WV WATER VALVE            |
| GUY GUY                        | YI YARD INLET             |
|                                | FM FIELD MEASUREMENT      |

**DUNCAN CREEK ROAD**  
 50' PUBLIC R/W

**SETBACK INFO**

FRONT: 35'  
 REAR: 25'  
 SIDES: 10'  
 CORNER SIDE: 20'

**REFERENCES:**

B.M. 2022, PGS. 594-596



SCALE: 1" = 40'

**NOTES**

1. THIS SURVEY SUBJECT TO ANY FACTS THAT MAY BE DISCLOSED BY A FULL AND ACCURATE TITLE SEARCH.
2. THIS MAP MAY NOT BE A CERTIFIED SURVEY AND HAS NOT BEEN REVIEWED BY A LOCAL GOVERNMENT AGENCY FOR COMPLIANCE WITH ANY APPLICABLE LAND DEVELOPMENT REGULATIONS AND HAS NOT BEEN REVIEWED FOR COMPLIANCE WITH RECORDING REQUIREMENTS FOR PLATS.

FOR REPRESENTATIVE PURPOSES ONLY  
 NOT FOR PERMITTING, RECORDATION,  
 CONVEYANCE OR SALES

HOUSE FIT  
 ONLY

DATE: AUG. 21, 2024

F.B. \_\_\_\_\_

**RWK, PA**

ENGINEERING ~ SURVEYING

CORPORATE LICENSE: C-1771  
 101 W. MAIN ST., SUITE 202  
 GARNER, NC 27529  
 PHONE (919) 779-4854  
 FAX (919) 779-4056