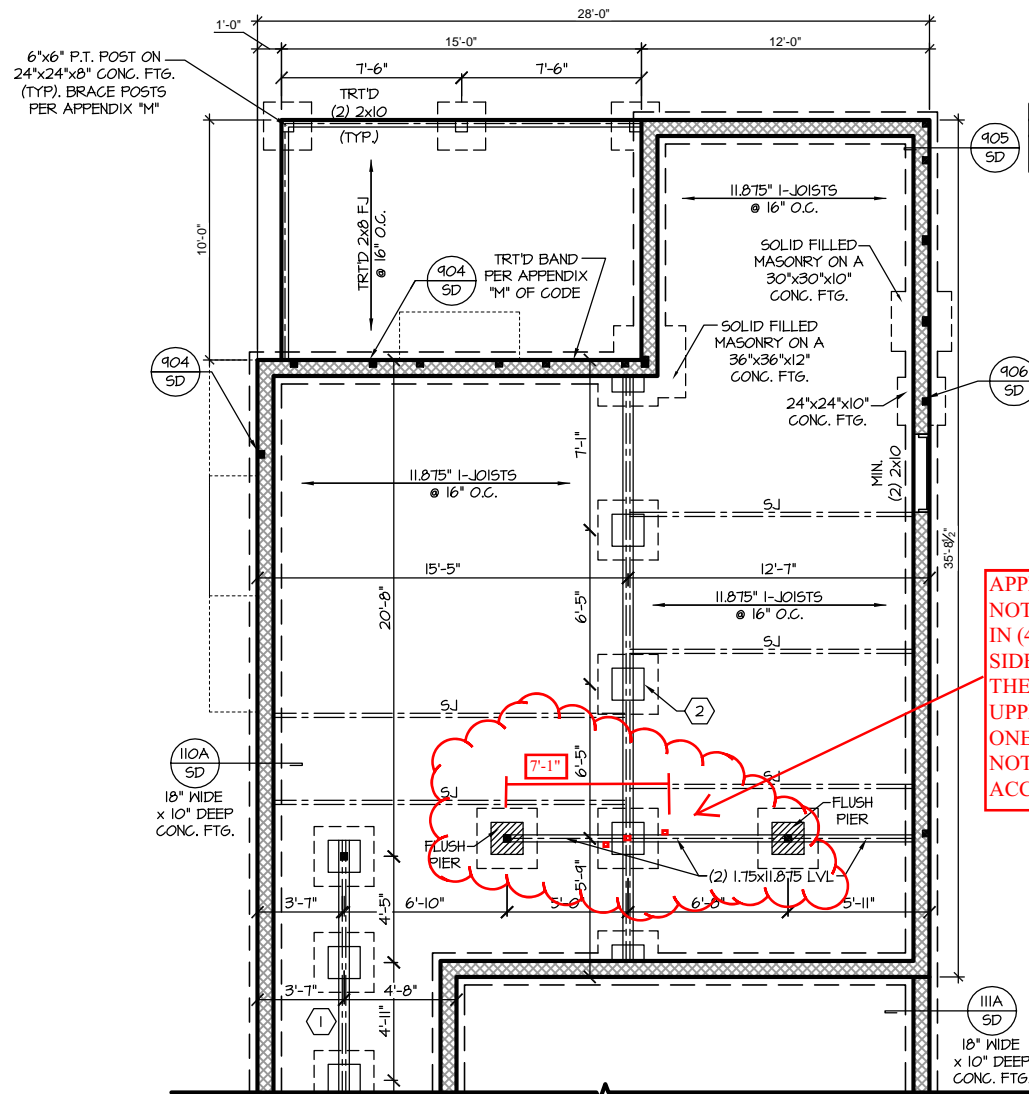
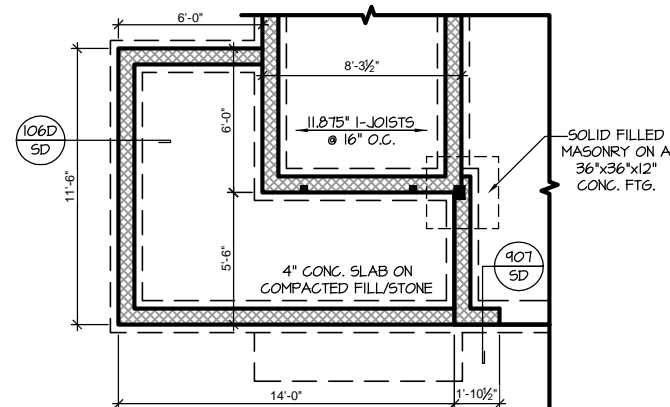


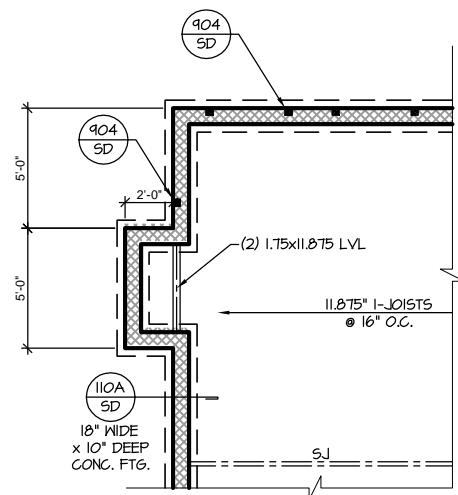
CRAWL FND. W/ OPT. EXTENDED FAMILY ROOM
SCALE: 1/8"=1'-0" ON 11x17, 1/4"=1'-0" ON 22x34



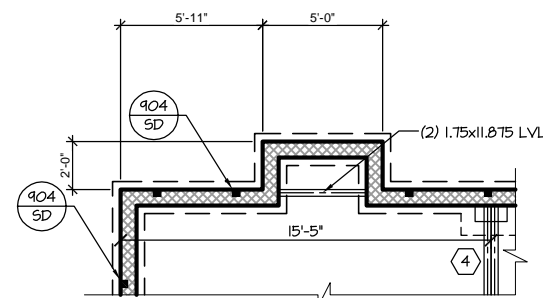
CRAWL FND. W/ OPT. EXTENDED CAFE
SCALE: 1/8"=1'-0" ON 11x17, 1/4"=1'-0" ON 22x34



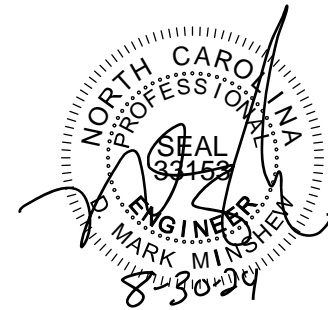
CRAWL FND. W/ OPT. EXTENDED FRONT PORCH
SCALE: 1/8"=1'-0" ON 11x17, 1/4"=1'-0" ON 22x34



CRAWL FND. W/ OPT. SIDE FIREPLACE
SCALE: 1/8"=1'-0" ON 11x17, 1/4"=1'-0" ON 22x34

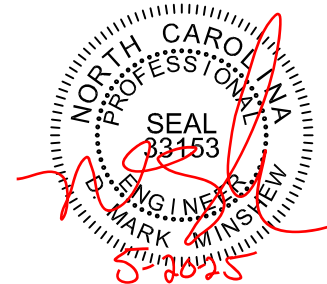


CRAWL FND. W/ OPT. REAR FIREPLACE
SCALE: 1/8"=1'-0" ON 11x17, 1/4"=1'-0" ON 22x34



APPROXIMATELY 3/4" DIAMETER NOTCHES FOR ELECTRICAL LINES IN (4) LOCATIONS. ONE ON EACH SIDE OF THE PIER AND TWO OVER THE PIER. EACH NOTCH IS IN THE UPPER EDGE AND AFFECTS ONLY ONE PLY OF LVL. THE NOTCHES NOTED ARE STRUCTURALLY ACCEPTABLE.

Project #: 21-3366.1-RH-A
Page: 1 of 1
Lot 185, Duncans Creek
May 20, 2025
RE: Notches in LVL



PROJECT #
21-3366.1-RH

Engineers seal applies only to structural components on this document.
Seal does not include construction means, methods, techniques, sequences, procedures or safety precautions.
Any deviations or discrepancies on plans are to be brought to the immediate attention of Southern Engineers. Failure to do so will void Southern Engineer's liability.
Use of these plans constitutes approval of terms & conditions as defined in the customer agreement.

Southern Engineers, P.A.
3716 Benson Drive, Raleigh, NC 27609
Phone: (919) 878-1617
License: C-4772
www.southernengineers.com

NEW HOME, INC.

SMITHFIELD
Garage Right

Roof Truss Version

S-1.2.1