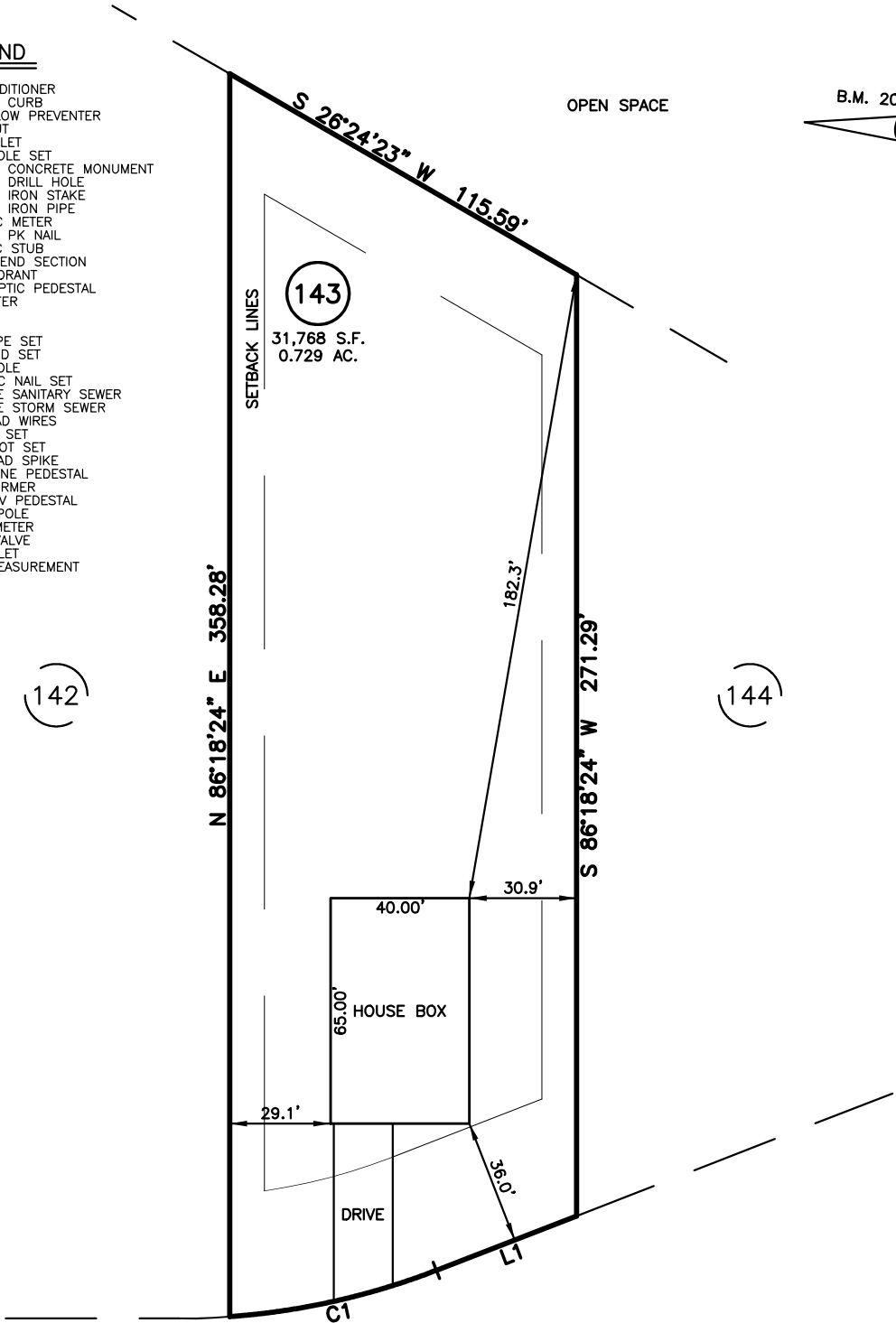
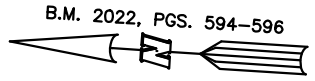


HOUSE FIT FOR
NEW HOME, INC.
 499 DUNCAN CREEK ROAD
 LOT 143, DUNCAN'S CREEK, PHASE 1
 UPPER LITTLE CREEK TOWNSHIP, HARNETT COUNTY, NORTH CAROLINA

LEGEND

- ⊠ AIR CONDITIONER
- BC BACK OF CURB
- BFP BACK FLOW PREVENTER
- CLEANOUT
- ▣ CURB INLET
- DHS DRILL HOLE SET
- ECM EXISTING CONCRETE MONUMENT
- EDH EXISTING DRILL HOLE
- EIS EXISTING IRON STAKE
- EIP EXISTING IRON PIPE
- EM ELECTRIC METER
- EPK EXISTING PK NAIL
- ES ELECTRIC STUB
- FLARED END SECTION
- ⊕ FIRE HYDRANT
- FIBER OPTIC PEDESTAL
- GM GAS METER
- GUY
- INV. INVERT
- IPS IRON PIPE SET
- IRS IRON ROD SET
- LIGHT POLE
- MNS MAGNETIC NAIL SET
- ⊕ MANHOLE SANITARY SEWER
- ⊕ MANHOLE STORM SEWER
- OHV OVERHEAD WIRES
- PKS PK NAIL SET
- PNS POINT NOT SET
- RRS RAIL ROAD SPIKE
- TELEPHONE PEDESTAL
- TRANSFORMER
- CABLE TV PEDESTAL
- UTILITY POLE
- WATER METER
- WATER VALVE
- YARD INLET
- () FIELD MEASUREMENT



DUNCAN CREEK ROAD
 50' PUBLIC R/W

SETBACK INFO

FRONT: 35'
 REAR: 25'
 SIDES: 10'
 CORNER SIDE: 20'

REFERENCES:

B.M. 2022, PGS. 594-596

LINE	BEARING	DISTANCE
L1	N 24°53'31" W	43.32'

NUM	RADIUS	ARC	DELTA	CHORD BRG	CHORD
C1	206.6'	61.3'	17°00'05"	N 16°19'23" W	61.1'



SCALE: 1" = 50'

FOR REPRESENTATIVE PURPOSES ONLY
 NOT FOR PERMITTING, RECORDATION,
 CONVEYANCE OR SALES

NOTES

1. THIS SURVEY SUBJECT TO ANY FACTS THAT MAY BE DISCLOSED BY A FULL AND ACCURATE TITLE SEARCH.
2. THIS MAP MAY NOT BE A CERTIFIED SURVEY AND HAS NOT BEEN REVIEWED BY A LOCAL GOVERNMENT AGENCY FOR COMPLIANCE WITH ANY APPLICABLE LAND DEVELOPMENT REGULATIONS AND HAS NOT BEEN REVIEWED FOR COMPLIANCE WITH RECORDING REQUIREMENTS FOR PLATS.

HOUSE FIT
 ONLY

DATE: AUG. 20, 2024
 F.B. _____

RWK, PA
ENGINEERING ~ SURVEYING
 CORPORATE LICENSE: C-1771
 101 W. MAIN ST., SUITE 202
 GARNER, NC 27529
 PHONE (919) 779-4854
 FAX (919) 779-4056