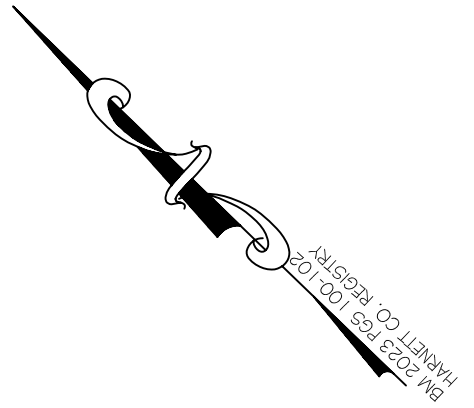
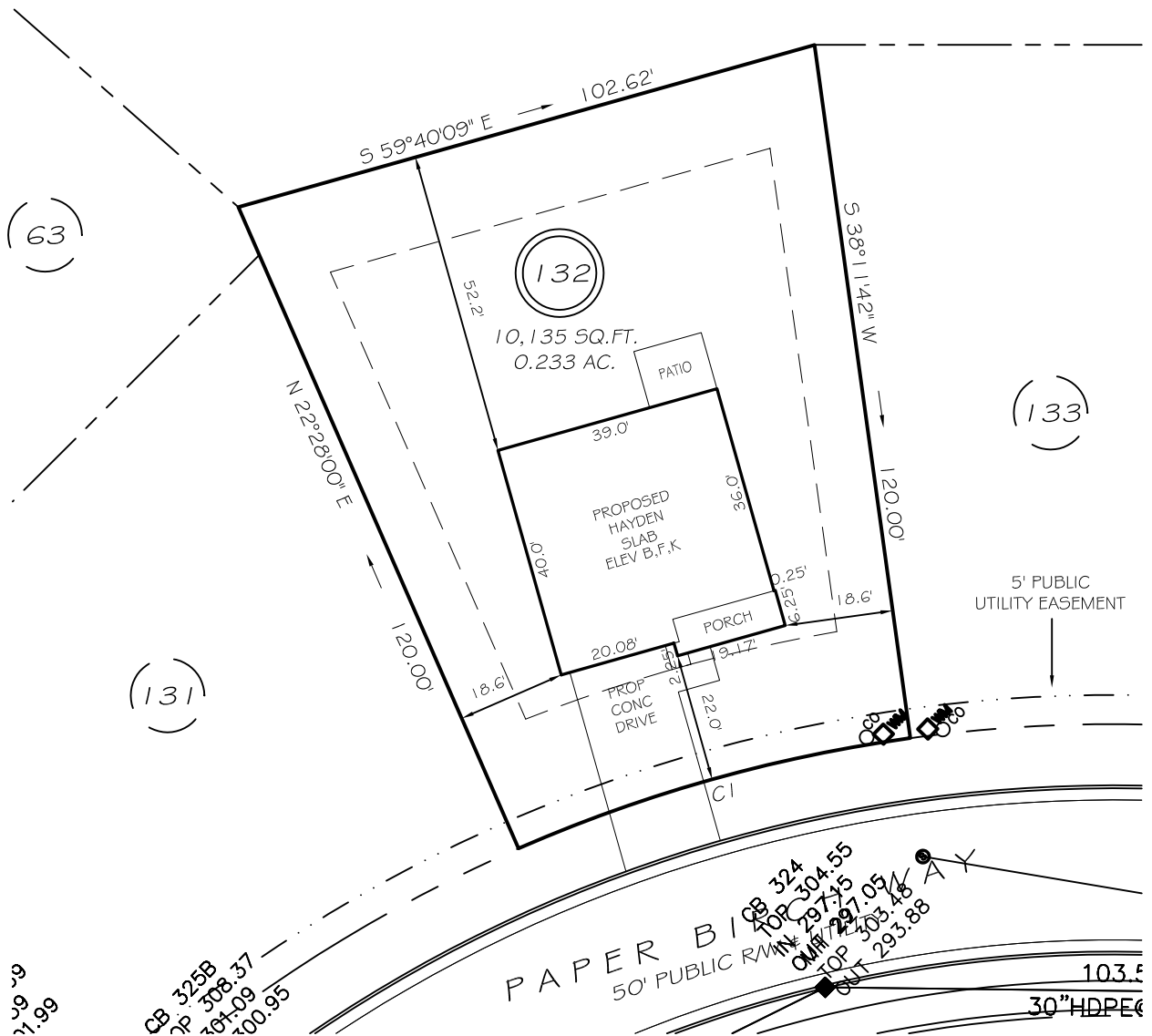


I, MICHAEL P. GRIFFIN, certify that under my direction and supervision this map was drawn from an actual field survey; that the error of closure of the survey as calculated by coordinates is 1: 10,000+; that the area shown hereon was calculated by coordinates.

Witness my hand and seal this day of MONTH 2024.



OPEN SPACE



11.99
17.99

CB 325B
IP 508.37
RAW 61.09
N/F 100.95

PAPER BIRCH
50' PUBLIC R/W
TOP 304.55
TOP 297.75
TOP 291.05
TOP 303.48
SET 293.88
103.5
30" HDPE

IMPERVIOUS AREAS

HOUSE	1604 SQ. FT.
DRIVE & WALKS	450 SQ. FT.
PATIO	120 SQ. FT.
TOTAL	2174 SQ. FT.
ALLOWED	3000 SQ. FT.

SETBACKS

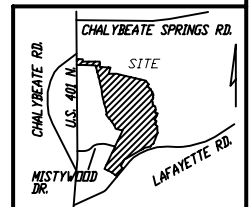
FRONT	20'
REAR	15'
SIDE	10'
CORNER SIDE	15'

CI R=255.00' L=70.00' N59°40'09"W G9.78'

P R E L I M I N A R Y
NOT FOR RECORDATION,
SALES OR CONVEYANCE

LEGEND

EIP	EXISTING IRON PIPE	MH	MANHOLE
IPS	IRON PIPE SET	WM	WATER METER
RAW	RIGHT OF WAY	CO	CLEAN OUT
N/F	NOW OR FORMERLY	FH	FIRE HYDRANT
EIS	EXISTING IRON STAKE	CB	CATCH BASIN



GRiffin LAND SURVEYING, INC.
P.O. BOX 148
FUQUAY-VARINA, NC 27526
(919) - 567-1963

PLOT PLAN
FOR
D. R. HORTON
WOODGROVE
LOT 132
PAPER BIRCH WAY
NORTH CAROLINA
HARNETT CO. HECTOR'S CREEK TWSHP

DRAWN BY **KDF**

DATE **9/9/24**

CHECKED BY **MPG**

SCALE **1" = 30'**