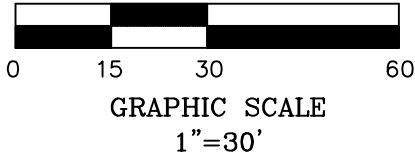
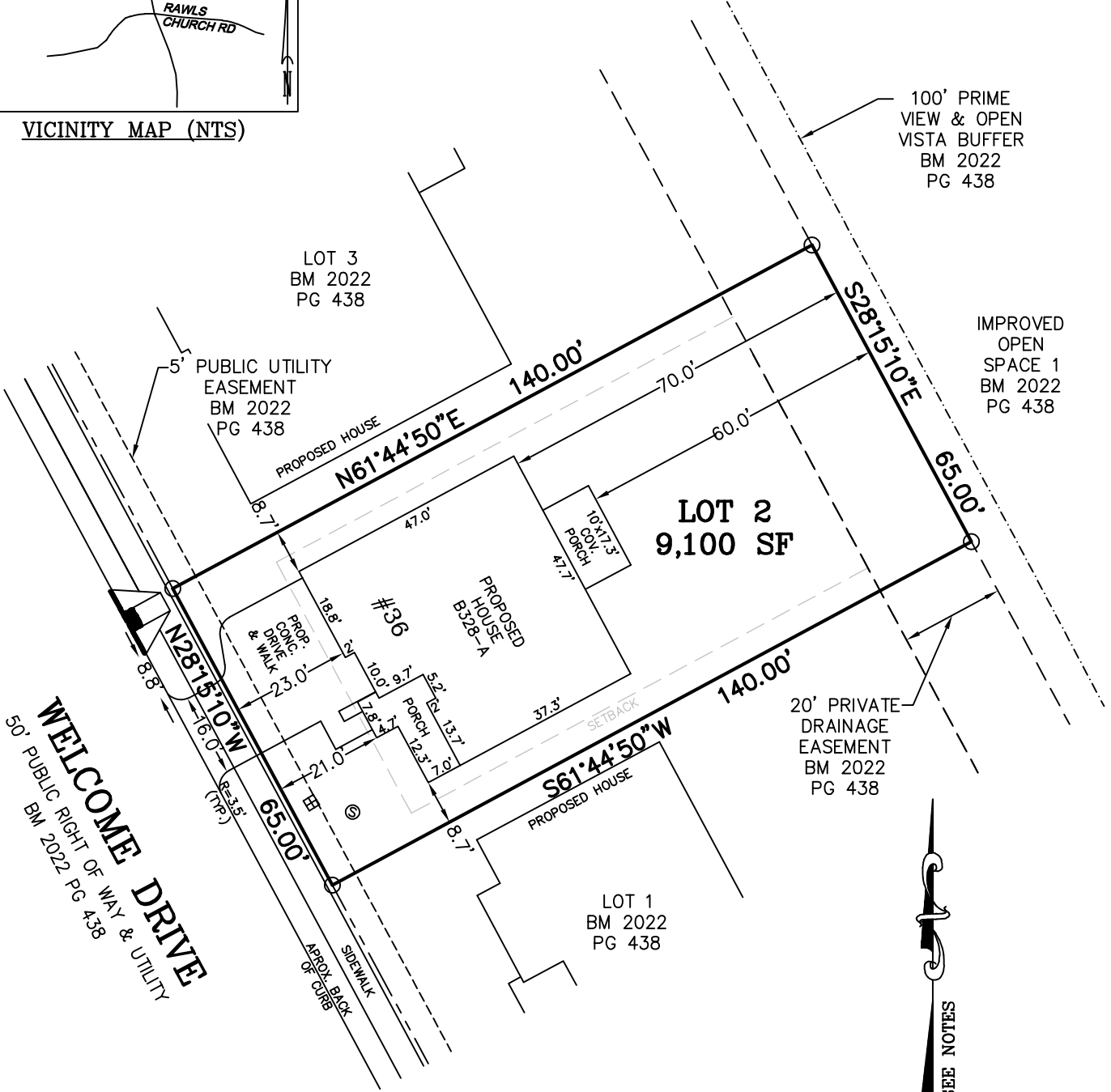


VICINITY MAP (NTS)



LEGEND

- MATHEMATICAL POINT
- CONTROL CORNER
- ▣ WATER METER
- ⊙ SEWER CLEAN OUT
- ⊗ FIRE HYDRANT



NOTES:

- REFERENCE HARNETT CO. BM 2022, PG 434-448 FOR BOUNDARY INFORMATION, NORTH INDEX & TIE LINES TO SUBDIVISION CONTROL CORNERS.
- ZONED: RA-30, RA-40, & CONSERVATION.
- SETBACKS, PER BM 2022, PG 434:
 43' LOT WIDTH:
 FRONT YARD-20', SIDE YARD-4' & 4' OR 0' & 8', REAR YARD-20', CORNER YARD-12'.
 >43' LOT WIDTH:
 FRONT YARD-20', SIDE YARD-5', REAR YARD-20', CORNER YARD-12'.
- PROPERTY IS NOT LOCATED WITHIN A SPECIAL FLOOD HAZARD AREA AS SCALED FROM THE NFIP FIRM No. 3720065500L (EFFECTIVE DATE: JULY 19, 2022).

MAXIMUM ALLOWABLE IMPERVIOUS-3,600 SF

TOTAL ESTIMATED IMPERVIOUS-3,016 SF	
SITE	SQ. FT.
HOUSE	2,206
DRIVEWAY	587
LEAD WALK	41
COV. PORCH	173
A/C PAD	9

PERMIT PLAN LOT: 2

SERENITY SUBDIVISION, PHASE 1
 HECTORS CREEK TOWNSHIP, HARNETT COUNTY, NC

SURVEYED FOR
DAVID WEEKLEY HOMES
 1901 N. HARRISON AVENUE, SUITE 200
 CARY, NC 27513



MSS LAND CONSULTANTS, PC
 "Committed to Total Quality Service"
 Firm License: C-2070
 E S T. 1 9 9 8

6118 St. Giles St Phone (919) 510-4464
 (Suite E) Fax (919) 510-9102
 Raleigh, NC 27612 Email: gowersw@mssland.com

I HEREBY CERTIFY THAT THE BUILDING WILL LIE WHOLLY ON THE LOT. THIS PLAT IS OF AN EXISTING PARCEL OF LAND. THIS IS NOT A SURVEY AND NOT FOR RECORDATION PURPOSES.

PRELIMINARY PLAN

WADE A. GOWERS, PLS L-4639

O:\DWHOMES\IDWH-22-02-SERENITY.dwg, Layout1, 8/26/2024 11:46:22 AM, crawfordc, 1:1