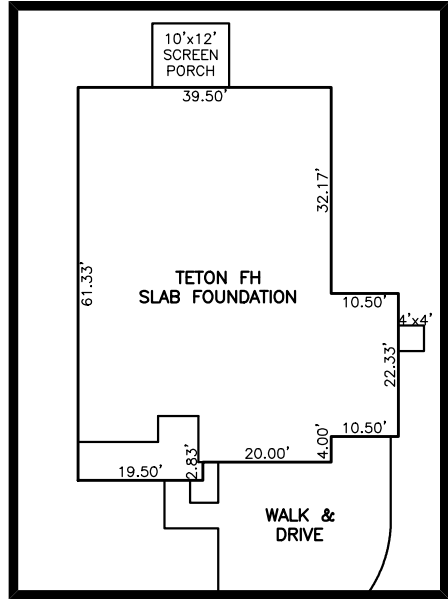
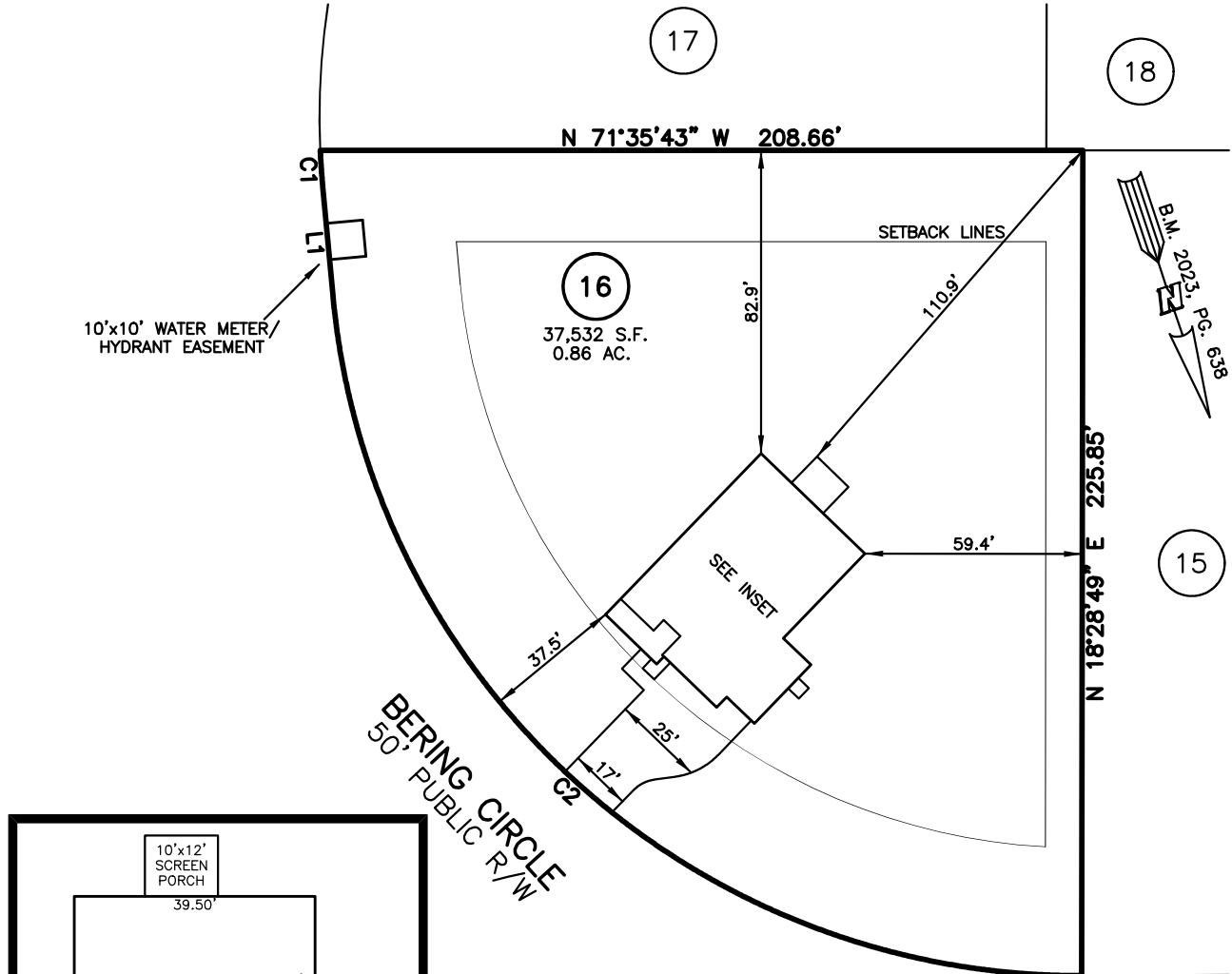


PLOT PLAN FOR  
**MATTAMY HOMES, LLC.**  
 88 BERING CIRCLE  
 LOT 16, RIVERFALL SUBDIVISION, PHASE ONE  
 BLACK RIVER TOWNSHIP, HARNETT COUNTY, NORTH CAROLINA



INSET SCALE: 1"=30"

**LEGEND**

- |     |                            |      |                        |
|-----|----------------------------|------|------------------------|
| △   | AIR CONDITIONER            | INV. | INVERT                 |
| BC  | BACK OF CURB               | IPS  | IRON PIPE SET          |
| BFP | BACK FLOW PREVENTER        | IRS  | IRON ROD SET           |
| ○   | CLEANOUT                   | ⊕    | LIGHT POLE             |
| ⊕   | CURB INLET                 | MNS  | MAGNETIC NAIL SET      |
| DHS | DRILL HOLE SET             | ⊕    | MANHOLE SANITARY SEWER |
| ECM | EXISTING CONCRETE MONUMENT | ⊕    | MANHOLE STORM SEWER    |
| EDH | EXISTING DRILL HOLE        | OHW  | OVERHEAD WIRES         |
| EIS | EXISTING IRON STAKE        | PKS  | PK NAIL SET            |
| EIP | EXISTING IRON PIPE         | PNS  | POINT NOT SET          |
| EM  | ELECTRIC METER             | RRS  | RAIL ROAD SPIKE        |
| EPK | EXISTING PK NAIL           | ⊕    | TELEPHONE PEDESTAL     |
| ES  | ELECTRIC STUB              | ⊕    | TRANSFORMER            |
| ⊕   | FLARED END SECTION         | ⊕    | CABLE TV PEDESTAL      |
| ⊕   | FIRE HYDRANT               | ⊕    | UTILITY POLE           |
| ⊕   | FIBER OPTIC PEDESTAL       | ⊕    | WATER METER            |
| ⊕   | GAS METER                  | ⊕    | WATER VALVE            |
| →   | GUY                        | ⊕    | YARD INLET             |
|     |                            | ( )  | FIELD MEASUREMENT      |

**SETBACK INFO**

FRONT: 35'  
 REAR: 25'  
 SIDES: 10'

**REFERENCES:**

B.M. 2023, PG. 638



SCALE: 1" = 50

**NOTES**

- THIS SURVEY SUBJECT TO ANY FACTS THAT MAY BE DISCLOSED BY A FULL AND ACCURATE TITLE SEARCH.
- THIS MAP MAY NOT BE A CERTIFIED SURVEY AND HAS NOT BEEN REVIEWED BY A LOCAL GOVERNMENT AGENCY FOR COMPLIANCE WITH ANY APPLICABLE LAND DEVELOPMENT REGULATIONS AND HAS NOT BEEN REVIEWED FOR COMPLIANCE WITH RECORDING REQUIREMENTS FOR PLATS.

IMPERVIOUS SURFACES	S.F.
HOUSE	2,600
WALK & DRIVE	1,010
PORCH	120
PAD	20
TOTAL	3,750
MAX. IMPERVIOUS	5,500

LINE	BEARING	DISTANCE
L1	N 13°05'13" E	30.12'

NUM	RADIUS	ARC	DELTA	CHORD BRG	CHORD
C1	205.00'	9.89'	2°45'48"	S 14°28'07" W	9.89'
C2	205.00'	303.76'	84°53'50"	S 29°21'42" E	276.72'

PLOT PLAN  
 PRELIMINARY PLAT- NOT FOR RECORDATION,  
 CONVEYANCE OR SALES

REV CODE: 1.FLIP, 2.PLAN, 3.ROTATE, 4.MOVE, 5.SS  
 6.SEVERAL OF ABOVE, 7.LAND FEATURE, 8. OTHER

DATE: SEP. 12, 2024

F.B. \_\_\_\_\_

**RWK, PA**

**ENGINEERING ~ SURVEYING**

CORPORATE LICENSE: C-1771  
 101 W. MAIN ST., SUITE 202  
 GARNER, NC 27529  
 PHONE (919) 779-4854  
 FAX (919) 779-4056