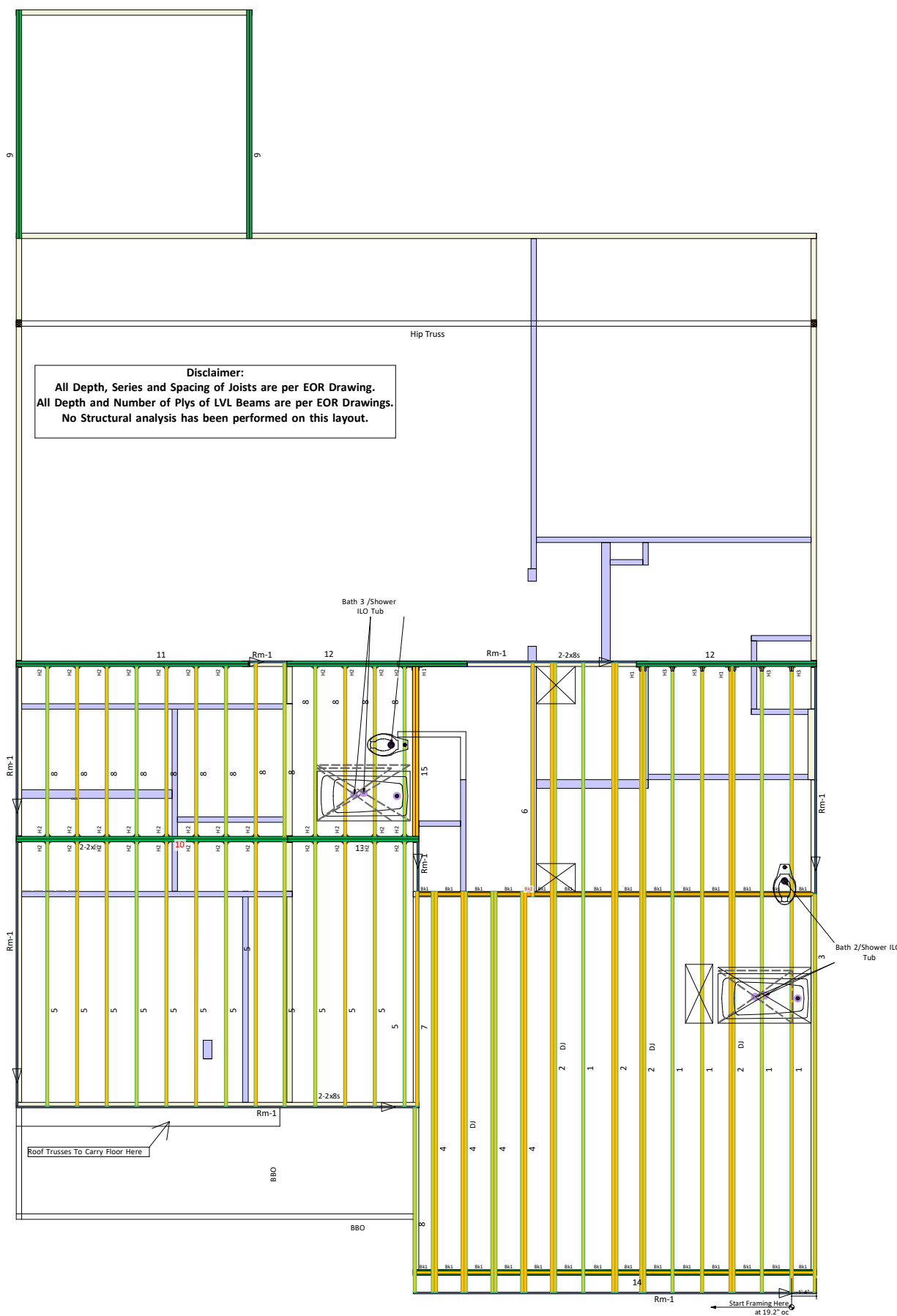
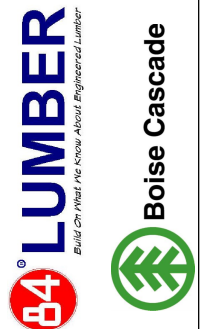


All I-Joist and Versa-Lam Beams
Must be Installed per The
Boise Cascade Installation Guide!

KB Homes
2939 D
143 Birchwood Grove

Revisions:	BY:



Disclaimer:
All Depth, Series and Spacing of Joists are per EOR Drawing.
All Depth and Number of Plys of LVL Beams are per EOR Drawings.
No Structural analysis has been performed on this layout.

Products					
PlotID	Length	Product	Plies	Net Qty	Fab Type
1	34' 0"	14" BCI* 5000s-1.8	1	5	MFD
2	34' 0"	14" BCI* 5000s-1.8	2	8	MFD
3	22' 0"	14" BCI* 5000s-1.8	1	1	MFD
4	22' 0"	14" BCI* 5000s-1.8	2	8	MFD
5	15' 0"	14" BCI* 5000s-1.8	1	13	MFD
6	13' 0"	14" BCI* 5000s-1.8	1	1	MFD
7	12' 0"	14" BCI* 5000s-1.8	1	1	MFD
8	10' 0"	14" BCI* 5000s-1.8	1	14	MFD
9	14' 0"	1-3/4" x 9-1/4" VERSA-LAM* 2.0 3100 SP	2	4	MFD
10	16' 0"	1-3/4" x 14" VERSA-LAM* 2.0 3100 SP	2	2	MFD
11	14' 0"	1-3/4" x 14" VERSA-LAM* 2.0 3100 SP	2	2	MFD
12	10' 0"	1-3/4" x 14" VERSA-LAM* 2.0 3100 SP	2	4	MFD
13	8' 0"	1-3/4" x 14" VERSA-LAM* 2.0 3100 SP	2	2	MFD
14	22' 0"	1-3/4" x 18" VERSA-LAM* 2.0 3100 SP	2	2	MFD
15	10' 0"	14" BCI* 5000s-1.8	2	2	MFD
Rm-1	12' 0"	1" x 14" BC RIM BOARD OSB	1	8	MFD
Bk1	1' 5 7/16"	14" BCI* 5000s-1.8	1	29	MFD

Connector Summary			
PlotID	Qty	Manuf	Product
H1	3	Simpson	HU4.12/11
H2	35	Simpson	IUS2.06/14
H3	4	Simpson	IUS2.06/9.5

SALES PRESENTATION DRAWING
No structural or dimensional check has been made of this design drawings of the building, therefore purchaser is to check and approve all dimensions, quantities, loads, and details carefully. This drawing has not been check by Boise Engineering.

KB Homes
2939 D
143 Birchwood Grove
84 Lumber EWP

Squash Blocks Required
Under The Ends Of All LVL
And Point Loads For Load
Transfer - See Details

Second Floor Layout

ALL DIMENSIONS AND CONDITIONS
TO BE REVIEWED AND APPROVED
BY BOTH THE CONTRACTOR AND
THE ENGINEER OF RECORD
PRIOR TO INSTALLATION

BC FRAMER II
Plan Date: 08172018
Structural Date: 09122018
By: JP National
Sheet: 2/3