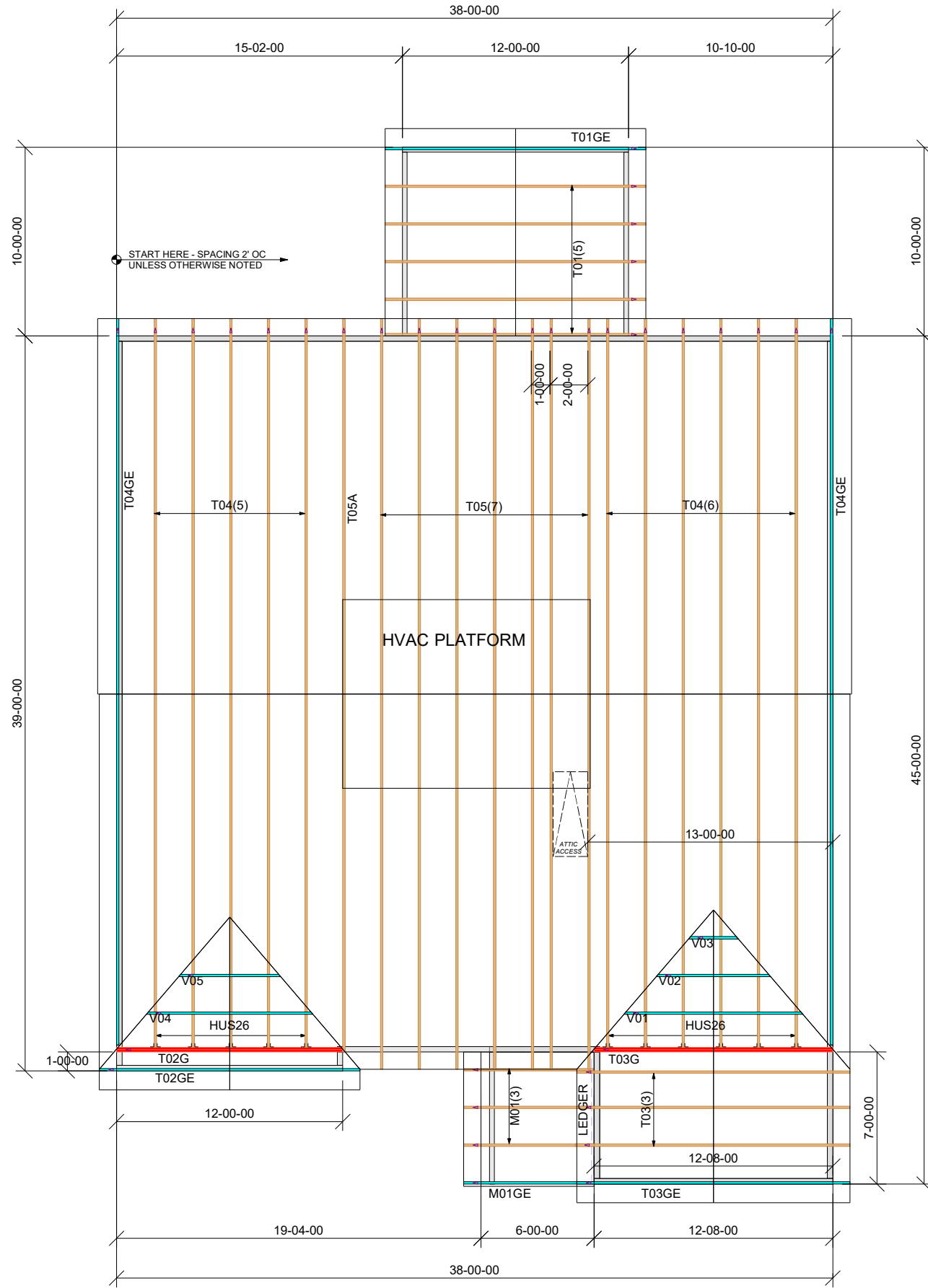


- All bracing, blocking, beams, purlins @ 2'0" o.c., ledger, etc. provided by others.
- Roof truss to roof truss connections provided by Riverside Roof Truss.
- Truss to building connections provided by others.

**Refer to Sealed drawings for connection detail of multiple ply trusses.**

**NOT ALL TRUSSES ARE SYMMETRICAL AND MAY NOT PERFORM CORRECTLY IF INSTALLED BACKWARDS. PLEASE REFER TO SEALS WHILE SETTING TRUSSES TO ENSURE TRUSSES ARE ORIENTED CORRECTLY**

Truss Connector Total List		
Manuf	Product	Qty
Simpson	HUS26	11



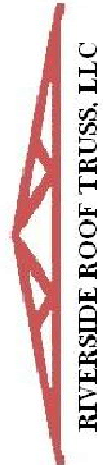
**SHOP DRAWING APPROVAL**  
 THIS LAYOUT IS THE SOLE SOURCE FOR FABRICATION OF TRUSSES AND VOIDS ALL PREVIOUS ARCHITECTURAL OR OTHER TRUSS LAYOUTS. REVIEW AND APPROVAL OF THIS LAYOUT MUST BE RECEIVED BEFORE ANY TRUSSES WILL BE BUILT. VERIFY ALL CONDITIONS TO INSURE AGAINST CHANGES THAT WILL RESULT IN EXTRA CHARGES TO YOU.

REVIEWED BY: \_\_\_\_\_ APPROVED BY: \_\_\_\_\_ DATE: \_\_\_\_\_

**Hanger Conversion Chart**

<b>USP</b>	<b>Simpson</b>	Client: <b>MATTAMY HOMES</b>
JUS26	LUS26	Job Name: <b>RVF - LOT #6 ROOF</b>
THD26	HUS26	Model: <b>SHENANDOAH-LH-FH-PORCH</b>
THD26-2	HHUS26-2	Lot #: <b>6</b>
HJC26	THJA26	Subdivision: <b>RIVERFALL</b>
MSH422	THA422	Sales Rep: <b>M N</b>
		Order #: <b>24-4826-A</b>
		Date: <b>8/12/2024</b>

**733 RIVER PARK DRIVE  
 DANVILLE, VA 24540  
 (434) 793-0217  
 FAX: (434) 799-8767**



**Riverside Roof Truss, LLC**  
 Roof Surface Area: 2137 Sq. Ft.  
 Floor Surface Area: 0 Sq. Ft.



**THIS SYMBOL INDICATES THE LEFT END OF TRUSS - REFER TO SEALED TRUSS DRAWINGS TO AVOID SETTING TRUSSES BACKWARDS!**