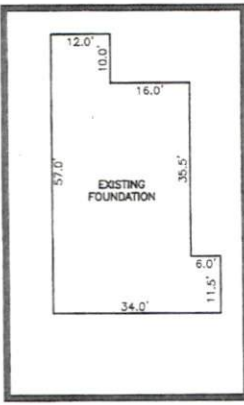
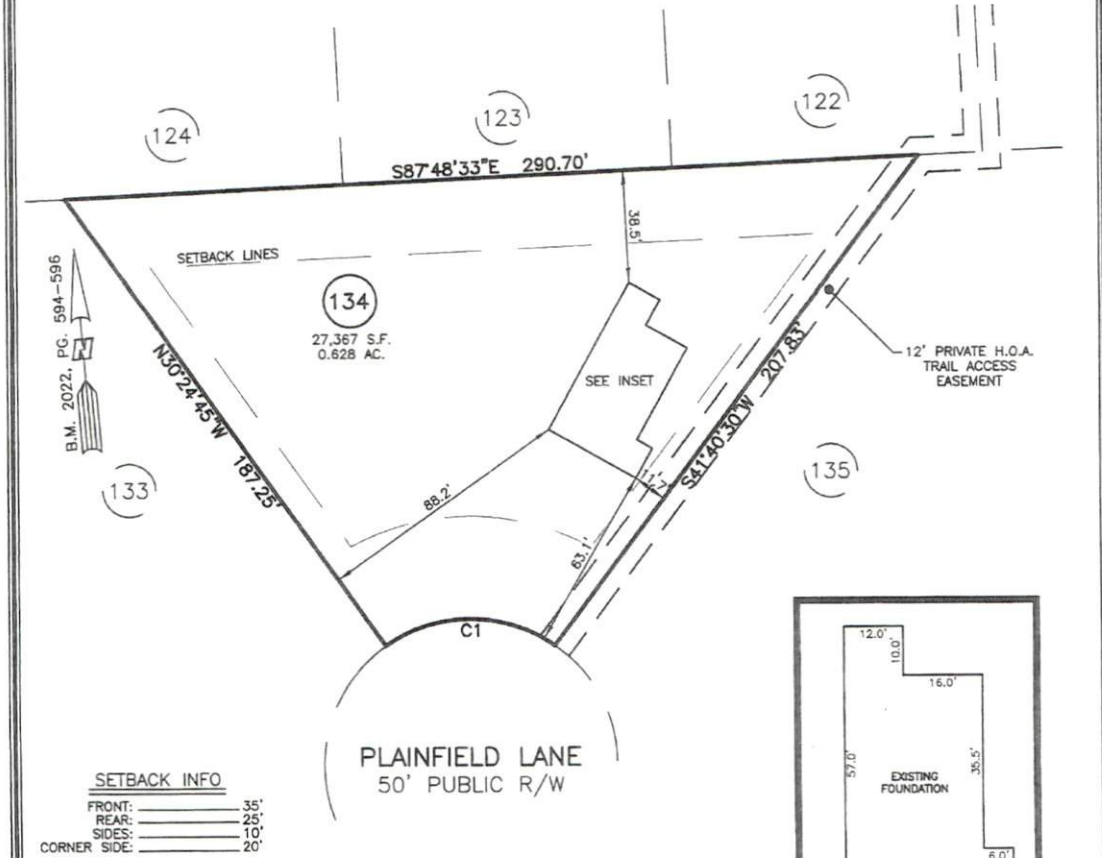


AS-BUILT IMPROVEMENTS FOR  
 NEW HOME, INC.  
 121 PLAINFIELD LANE  
 LOT 134, DUNCAN'S CREEK, PHASE I  
 UPPER LITTLE CREEK TOWNSHIP, HARNETT COUNTY, NORTH CAROLINA



- LEGEND**
- |   |   |
|---|---|
| <ul style="list-style-type: none"> <li>□ AIR CONDITIONER</li> <li>▢ BACK OF CURB</li> <li>▣ BACK FLOW PREVENTER</li> <li>○ CLEANOUT</li> <li>○ CURB INLET</li> <li>DHS DRILL HOLE SET</li> <li>ECM EXISTING CONCRETE MONUMENT</li> <li>EDH EXISTING DRILL HOLE</li> <li>EIS EXISTING IRON STAKE</li> <li>EIP EXISTING IRON PIPE</li> <li>EM ELECTRIC METER</li> <li>EPK EXISTING PK NAIL</li> <li>ES ELECTRIC STUB</li> <li>FLARED END SECTION</li> <li>FIRE HYDRANT</li> <li>FIBER OPTIC PEDESTAL</li> <li>GAS METER</li> <li>GUY</li> </ul> | <ul style="list-style-type: none"> <li>INV. INVERT</li> <li>IPS IRON PIPE SET</li> <li>IRS IRON ROD SET</li> <li>LPT LIGHT POLE</li> <li>MNS MAGNETIC NAIL SET</li> <li>MSS MANHOLE SANITARY SEWER</li> <li>MSS MANHOLE STORM SEWER</li> <li>OWH OVERHEAD WIRES</li> <li>PKS PK NAIL SET</li> <li>PNS POINT NOT SET</li> <li>RRS RAIL ROAD SPIKE</li> <li>TELEPHONE PEDESTAL</li> <li>TRANSFORMER</li> <li>CABLE TV PEDESTAL</li> <li>UTILITY POLE</li> <li>WATER METER</li> <li>WATER VALVE</li> <li>YARD INLET</li> <li>FIELD MEASUREMENT</li> <li>REVISION TRIANGLE</li> </ul> |
|---|---|

THIS AS-BUILT IS FOR CODE COMPLIANCE. NOT FOR SALES OR CONVEYANCE

NUM	RADIUS	ARC	DELTA	CHORD BRG	CHORD
C1	50.00'	61.51'	70°29'16"	N85°10'06"W	57.71'

WAKE COUNTY, NORTH CAROLINA

I CERTIFY THAT THIS MAP WAS DRAWN UNDER MY SUPERVISION FROM AN ACTUAL SURVEY MADE UNDER MY SUPERVISION; THAT THE IMPROVEMENTS LIE WHOLLY UPON THE LOT AND THAT THERE WERE NO ENCROACHMENTS OBSERVED EXCEPT AS SHOWN, AND THAT THE SURVEY IS OF AN EXISTING PARCEL OR PARCELS OF LAND.

*Charles R. Piratzky* 11-1-24  
 CHARLES R. PIRATZKY, P.L.S. DATE  
 L-2813



REFERENCES:  
 B.M. 2022, PG. 594-596

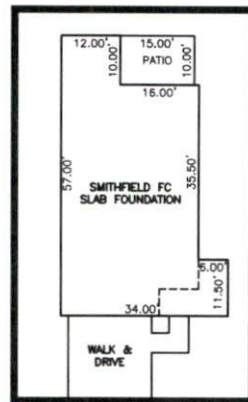
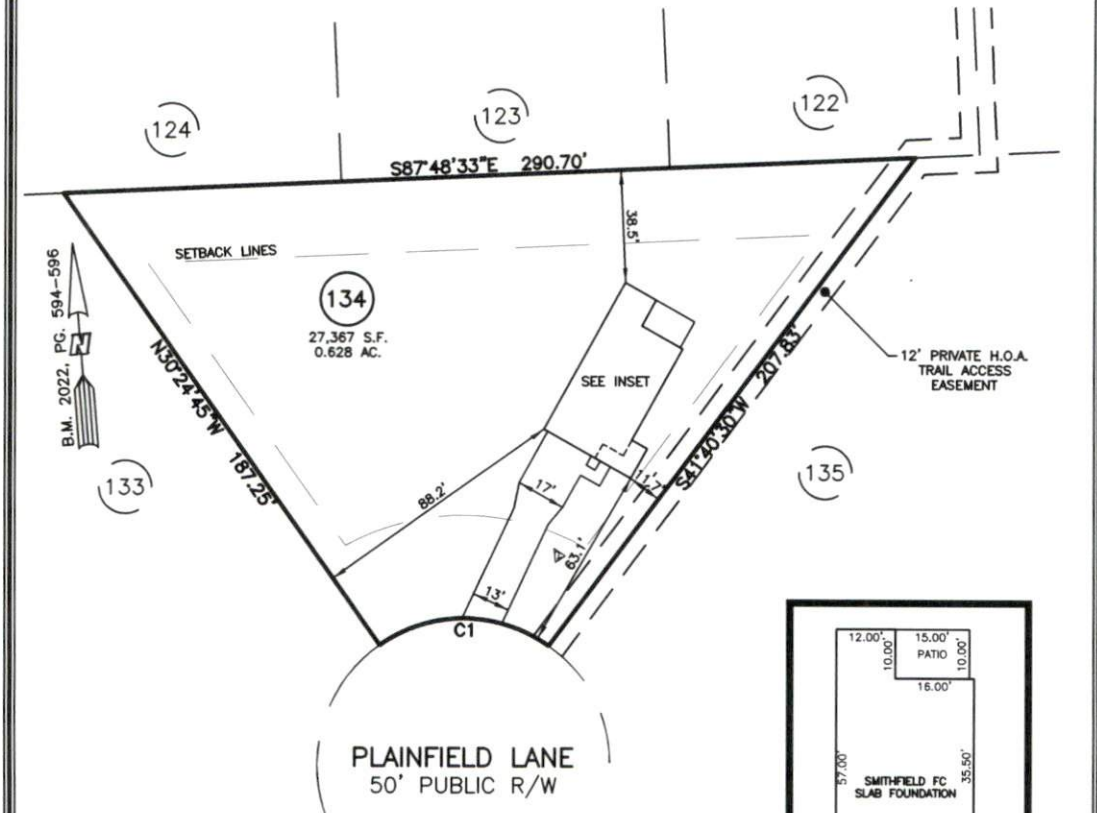
50 0 50  
 SCALE: 1" = 50'

NOTES

- THIS SURVEY SUBJECT TO ANY FACTS THAT MAY BE DISCLOSED BY A FULL AND ACCURATE TITLE SEARCH.
- THIS MAP MAY NOT BE A CERTIFIED SURVEY AND HAS NOT BEEN REVIEWED BY A LOCAL GOVERNMENT AGENCY FOR COMPLIANCE WITH ANY APPLICABLE LAND DEVELOPMENT REGULATIONS AND HAS NOT BEEN REVIEWED FOR COMPLIANCE WITH RECORDING REQUIREMENTS FOR PLATS.

DATE: OCT. 29, 2024	<p><b>RWK, PA</b>          ENGINEERING ~ SURVEYING          CORPORATE LICENSE: C-1771          101 W. MAIN ST., SUITE 202          GARNER, NC 27529          PHONE (919) 779-4854          FAX (919) 779-4056</p>
<p>Q:\FieldLoc\DUNCANCREEK133-134\FDN.TXT</p>	

PLOT PLAN FOR  
**NEW HOME, INC.**  
 121 PLAINFIELD LANE  
 LOT 134, DUNCAN'S CREEK, PHASE I  
 UPPER LITTLE CREEK TOWNSHIP, HARNETT COUNTY, NORTH CAROLINA



INSET SCALE: 1"=30'

**LEGEND**

- |                                |                          |
|--------------------------------|--------------------------|
| ⊠ AIR CONDITIONER              | INV. INVERT              |
| ⊞ BACK of CURB                 | IPS IRON PIPE SET        |
| ⊞ BACK FLOW PREVENTER          | IRS IRON ROD SET         |
| ○ CLEANOUT                     | ⊞ LIGHT POLE             |
| ⊞ CURB INLET                   | MNS MAGNETIC NAIL SET    |
| DMS DRILL HOLE SET             | ⊞ MANHOLE SANITARY SEWER |
| ECM EXISTING CONCRETE MONUMENT | ⊞ MANHOLE STORM SEWER    |
| EDH EXISTING DRILL HOLE        | OHW OVERHEAD WIRES       |
| EIS EXISTING IRON STAKE        | PKS PK NAIL SET          |
| EIP EXISTING IRON PIPE         | PKS POINT NOT SET        |
| EM ELECTRIC METER              | RRS RAIL ROAD SPIKE      |
| EPK EXISTING PK NAIL           | ⊞ TELEPHONE PEDESTAL     |
| ES ELECTRIC STUB               | ⊞ TRANSFORMER            |
| ⊞ FLARED END SECTION           | ⊞ CABLE TV PEDESTAL      |
| ⊞ FIRE HYDRANT                 | ⊞ UTILITY POLE           |
| ⊞ FIBER OPTIC PEDESTAL         | ⊞ WATER METER            |
| GM GAS METER                   | ⊞ WATER VALVE            |
| → GUY                          | ⊞ YARD INLET             |
|                                | ⊞ FIELD MEASUREMENT      |
|                                | ⊞ REVISION TRIANGLE      |

NUM	RADIUS	ARC	DELTA	CHORD BRG	CHORD
C1	50.00'	61.51'	70°29'16"	N85°10'06"W	57.71'

IMPERVIOUS SURFACES	
HOUSE	1,510 S.F.
WALK & DRIVE	1,010 S.F.
PORCH	150 S.F.
TOTAL	2,670 S.F.

**SETBACK INFO**

FRONT:	35'
REAR:	25'
SIDES:	10'
CORNER SIDE:	20'

**REFERENCES:**  
 B.M. 2022, PG. 594-596



**NOTES**

- THIS SURVEY SUBJECT TO ANY FACTS THAT MAY BE DISCLOSED BY A FULL AND ACCURATE TITLE SEARCH.
- THIS MAP MAY NOT BE A CERTIFIED SURVEY AND HAS NOT BEEN REVIEWED BY A LOCAL GOVERNMENT AGENCY FOR COMPLIANCE WITH ANY APPLICABLE LAND DEVELOPMENT REGULATIONS AND HAS NOT BEEN REVIEWED FOR COMPLIANCE WITH RECORDING REQUIREMENTS FOR PLATS.

PLOT PLAN  
 PRELIMINARY PLAT- NOT FOR RECORDATION,  
 CONVEYANCE OR SALES

REV CODE: 1.FLIP, 2.PLAN, 3.ROTATE, 4.MOVE, 5.SS  
 6.SEVERAL OF ABOVE, 7.LAND FEATURE, 8. OTHER

REV2: SEPT. 20, 2024(4)  
 REV1: SEPT. 03, 2024(3)  
 DATE: AUG. 26, 2024

F.B. \_\_\_\_\_

**RWK, PA**  
**ENGINEERING - SURVEYING**  
 CORPORATE LICENSE: C-1771  
 101 W. MAIN ST., SUITE 202  
 GARNER, NC 27529  
 PHONE (919) 779-4854  
 FAX (919) 779-4056