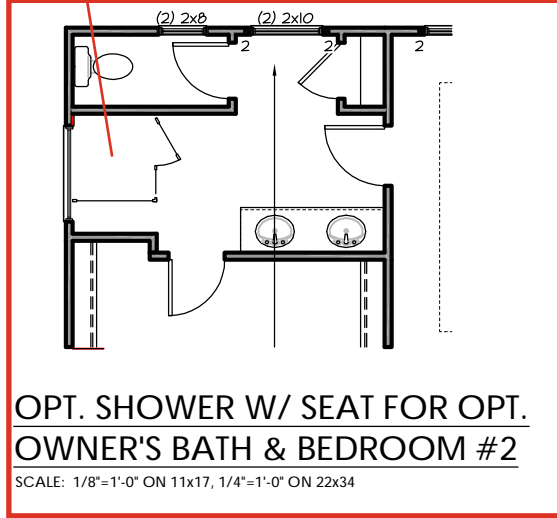
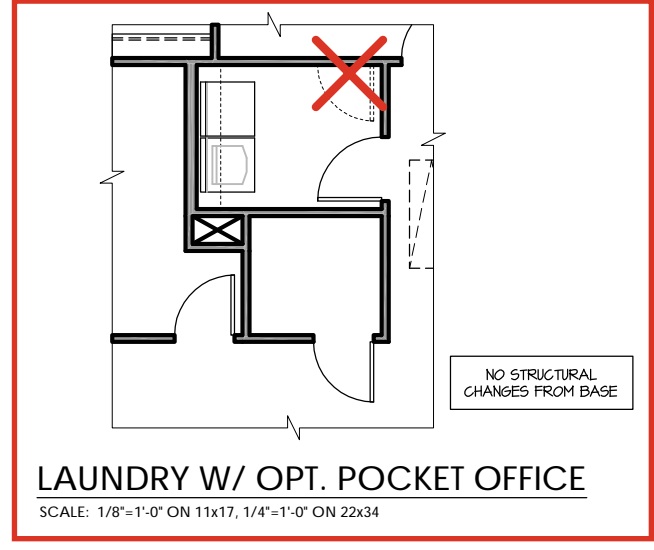


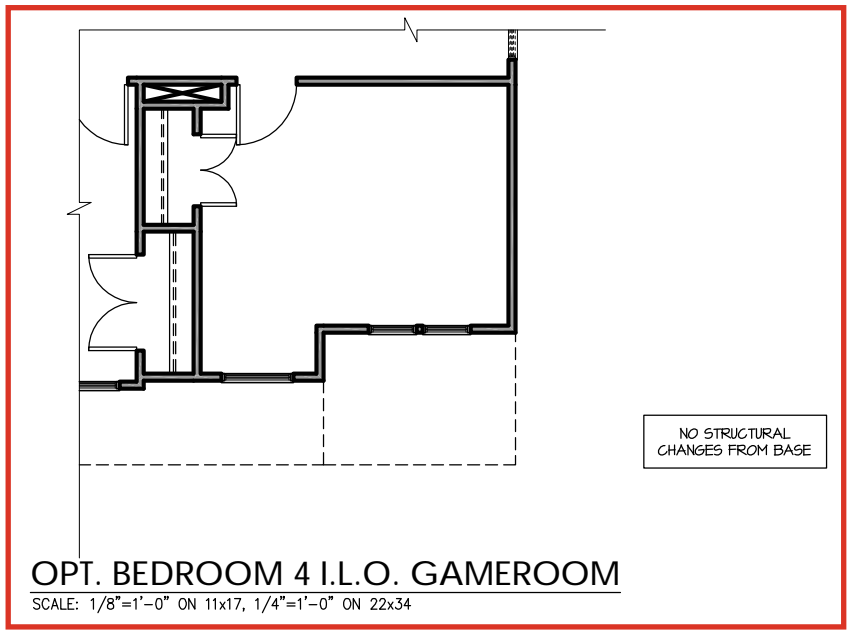
**OPT. OWNER'S BATH & BEDROOM #2**  
SCALE: 1/8"=1'-0" ON 11x17, 1/4"=1'-0" ON 22x34



**OPT. SHOWER W/ SEAT FOR OPT. OWNER'S BATH & BEDROOM #2**  
SCALE: 1/8"=1'-0" ON 11x17, 1/4"=1'-0" ON 22x34



**LAUNDRY W/ OPT. POCKET OFFICE**  
SCALE: 1/8"=1'-0" ON 11x17, 1/4"=1'-0" ON 22x34



**OPT. BEDROOM 4 I.L.O. GAMEROOM**  
SCALE: 1/8"=1'-0" ON 11x17, 1/4"=1'-0" ON 22x34



**PROJECT #**  
21-3366.1-LH

Engineers seal applies only to structural components on this document.  
Seal does not include construction means, methods, techniques, sequences, procedures or safety precautions.  
Any deviations or discrepancies on plans are to be brought to the immediate attention of Southern Engineers. Failure to do so will void Southern Engineer's liability.  
Use of these plans constitutes approval of terms & conditions as defined in the customer agreement.

**Southern Engineers, P.A.**  
3716 Benson Drive, Raleigh, NC 27609  
Phone: (919) 878-1617  
License: C-4772  
www.southernengineers.com

**NEW HOME, INC.**

**SMITHFIELD**  
Garage Left

**Roof Truss Version**

**S-2.2.1**