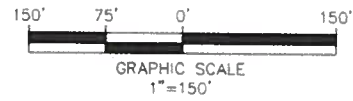


I, MICHAEL P. GRIFFIN, certify that under my direction and supervision this map was drawn from an actual field survey; that the error of closure of the survey as calculated by coordinates is 1:10,000+; that the area shown hereon was calculated by coordinates. Dashed lines shown hereon were not surveyed.

Witness my hand and seal this 4TH day of OCTOBER 2024.

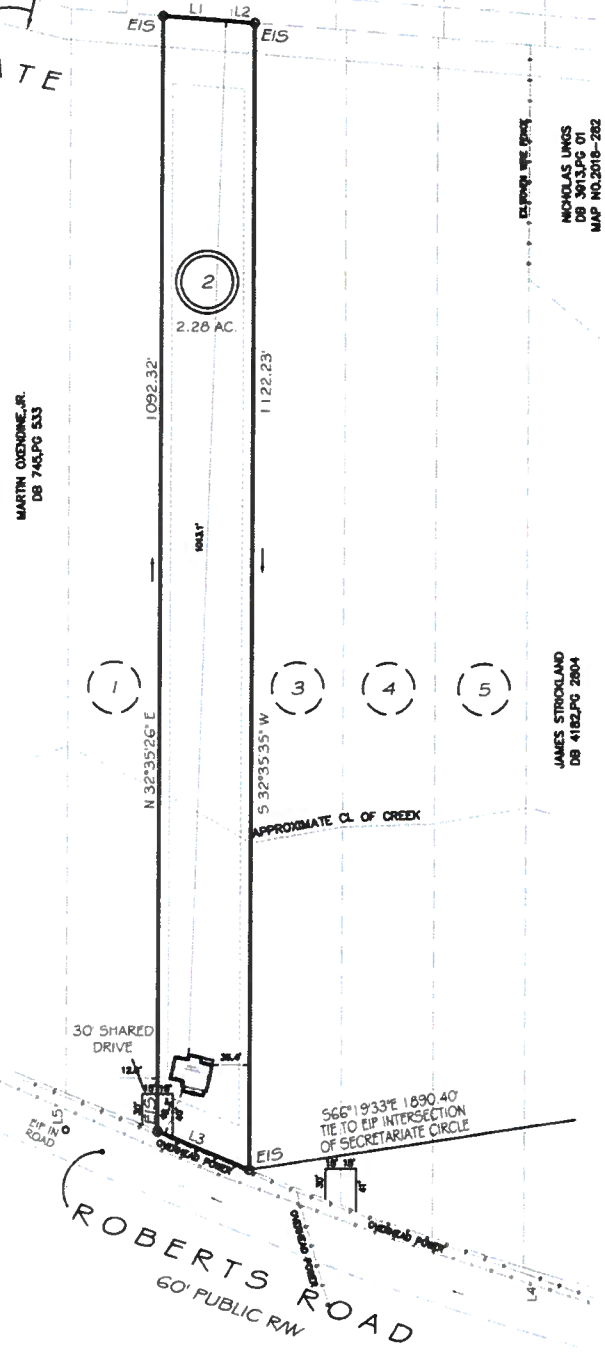


SECRETARIATE
CIRCLE
60' PRIVATE EASEMENT



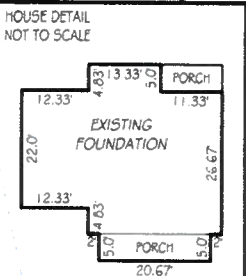
- WRELL MORRILL DB 4184.PG 022 MAP NO. 2000-191A (82)
- LORETTA PHELPS DB 3726.PG 050 MAP NO. 2000-191A (81)
- RICHARD REPULBIN DB 3846.PG 034 MAP NO. 2000-191A (80)
- JAMES JAMES DB 3800.PG 028 MAP NO. 2000-191A (79)
- TRIANGLE REAL ESTATE INVESTMENTS & ASSOCIATES LLC DB 3800.PG 073 MAP NO. 2000-191A (78)
- MICHAS JNKS DB 3013.PG 01 MAP NO. 2018-282
- JAMES STRICKLAND DB 4182.PG 2804

BM 2024 PAGE 303
HARNETT CO. REGISTRY



SETBACKS

FRONT	35'
REAR	25'
SIDE	10'



- L1 S 53°15'07"E 66.97'
- L2 S 53°10'55"E 23.03'
- L3 N 35°18'54"W 98.85'
- L4 S 32°35'48"W 40.70'
- L5 S 32°36'17"W 35.93'

LEGEND

EIP	EXISTING IRON PIPE	FES	FLARED END SECTION
ISS	IRON STAKE SET	WM	WATER METER
RAW	RIGHT OF WAY	CO	CLEAN OUT
N/F	NOW OR FORMERLY	FH	FIRE HYDRANT
EIS	EXISTING IRON STAKE	CB	CATCH BASIN

THIS PROPERTY IS NOT LOCATED
IN THE 100 YEAR FLOOD ZONE.

GLS GRIFFIN LAND SURVEYING, INC.
P.O. BOX 148
FUQUAY-VARINA, NC 27526
(919) - 567 - 1983
FIRM LIC. # C-1345

FOUNDATION SURVEY
FOR
SBM HOMES LLC
ROBERT'S ROAD MINOR
LOT 2
ROBERTS ROAD
SANFORD, N.C.
HARNETT COUNTY BARBECUE TOWNSHIP

DRAWN BY KDF	DATE 10/4/24
CHECKED BY MPG	SCALE 1" = 150'