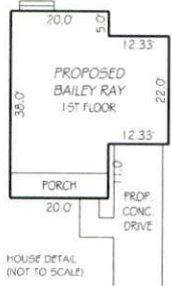
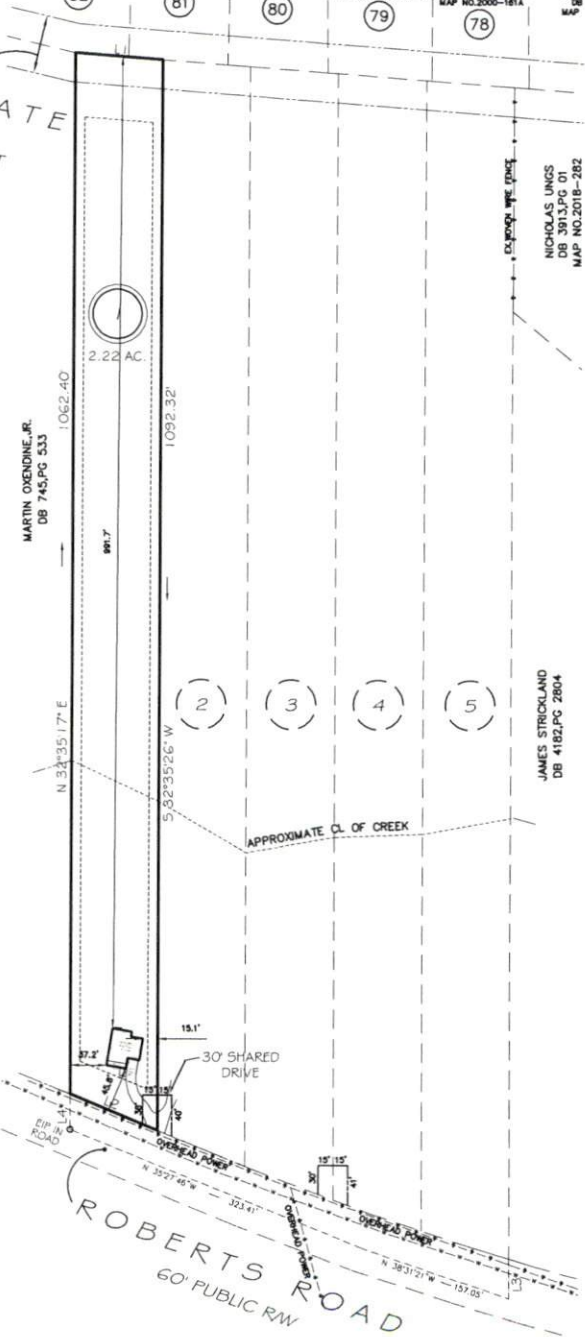


I, MICHAEL P. GRIFFIN, certify that under my direction and supervision this map was drawn from an actual field survey; that the error of closure of the survey as calculated by coordinates is 1:10,000+; that the area shown hereon was calculated by coordinates.
 Witness my hand and seal this day of MONTH 2024.

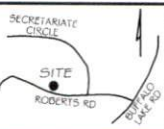
TRELL MORRILL DB 4124.PG 922 MAP NO. 2000-181A (82)
 LONGITA PHELPS DB 3720.PG 650 MAP NO. 2000-181A (81)
 RICHARD HEPBURN DB 3828.PG 424 MAP NO. 2000-181A (80)
 JAMES JAVENS DB 3500.PG 628 MAP NO. 2000-181A (79)
 TRIANGLE REAL ESTATE INVESTMENTS & ASSOCIATES LLC DB 3380.PG 173 MAP NO. 2000-181A (78)
 MICH. DB MAP

SECRETARIATE CIRCLE
 60' PRIVATE EASEMENT



SETBACKS

FRONT	35'
REAR	25'
SIDE	10'



L1	S 53°12'33\" E	90.00'
L2	N 35°15'54\" W	96.86'
L3	S 32°35'48\" W	40.70'
L4	S 32°35'17\" W	35.93'

LEGEND

EIP	EXISTING IRON PIPE	FES	FLARED END SECTION
I55	IRON STAKE SET	WM	WATER METER
RAW	RIGHT OF WAY	CO	CLEAN OUT
N/F	NOW OR FORMERLY	FH	FIRE HYDRANT
EIS	EXISTING IRON STAKE	CB	CATCH BASIN

PRELIMINARY
 NOT FOR RECORDATION,
 SALES OR CONVEYANCE

REVISION: ROTATED HOUSE 8/2/24

GLS GRIFFIN LAND SURVEYING, INC.
 P.O. BOX 148
 FUQUAY-VARINA, NC 27526
 (919) 567-1963

PLOT PLAN FOR
SBM HOMES LLC
 ROBERT'S ROAD MINOR
 LOT 1
 ROBERTS ROAD
 SANFORD, N.C.
 HARNETT COUNTY BARBECUE TOWNSHIP

DRAWN BY	GLS	DATE	7/31/24
CHECKED BY	MPG	SCALE	1" = 150'