

PLOT PLAN FOR  
**NEW HOME, INC.**  
 439 DUNCAN'S CREEK ROAD  
 LOT 140, DUNCAN'S CREEK, PHASE I  
 UPPER LITTLE CREEK TOWNSHIP, HARNETT COUNTY, NORTH CAROLINA

B.M. 2022, PGS. 594-596



(139)

**LEGEND**

- AIR CONDITIONER
- BC BACK OF CURB
- BFP BACK FLOW PREVENTER
- CLEANOUT
- ▣ CURB INLET
- DHS DRILL HOLE SET
- ECM EXISTING CONCRETE MONUMENT
- EDH EXISTING DRILL HOLE
- EIS EXISTING IRON STAKE
- EIP EXISTING IRON PIPE
- EM ELECTRIC METER
- EPK EXISTING PK NAIL
- ES ELECTRIC STUB
- FLR FLARED END SECTION
- FHY FIRE HYDRANT
- FOP FIBER OPTIC PEDESTAL
- GM GAS METER
- GUY GUY
- INV INVERT
- IPS IRON PIPE SET
- IRS IRON ROD SET
- LPT LIGHT POLE
- MNS MAGNETIC NAIL SET
- MSS MANHOLE SANITARY SEWER
- MSS MANHOLE STORM SEWER
- OHW OVERHEAD WIRES
- PKS PK NAIL SET
- PNS POINT NOT SET
- RRS RAIL ROAD SPIKE
- TPD TELEPHONE PEDESTAL
- TRF TRANSFORMER
- CTV CABLE TV PEDESTAL
- UPU UTILITY POLE
- WMR WATER METER
- WV WATER VALVE
- YI YARD INLET
- ( ) FIELD MEASUREMENT

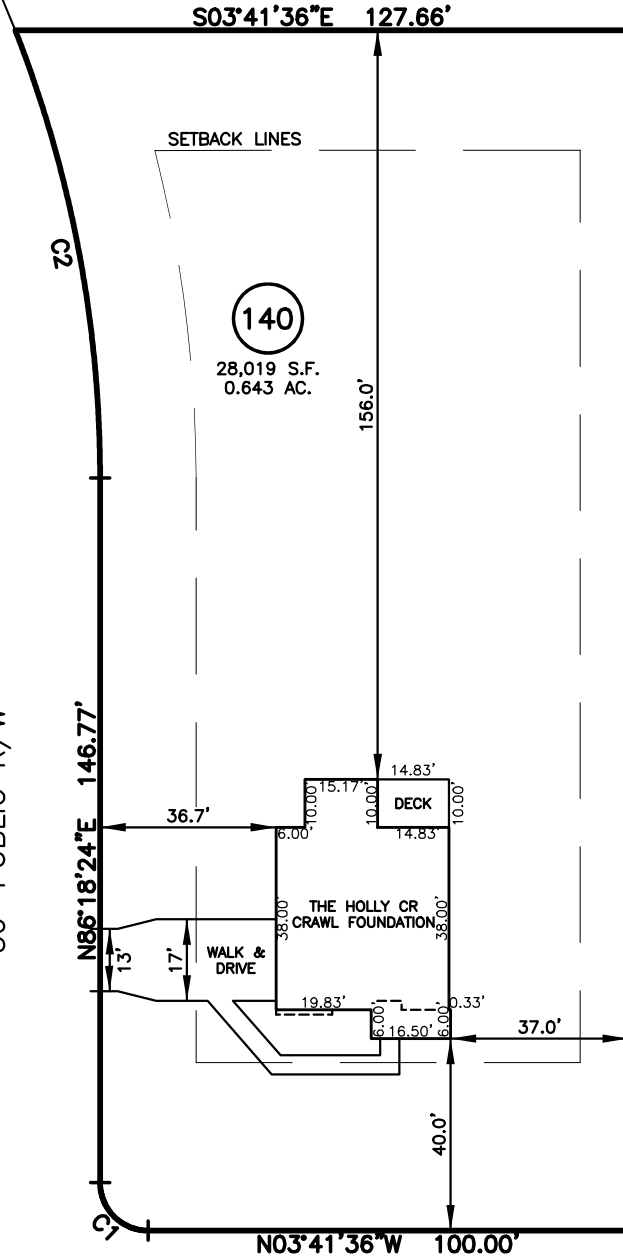
**SETBACK INFO**

- FRONT: 35'
- REAR: 25'
- SIDES: 10'
- CORNER SIDE: 20'

**REFERENCES:**

B.M. 2022, PG. 594-596

PLAINFIELD LANE  
50' PUBLIC R/W



(141)

DUNCAN CREEK ROAD  
50' PUBLIC R/W

| IMPERVIOUS SURFACES |                   |
|---------------------|-------------------|
| HOUSE               | 1,620 S.F.        |
| WALK & DRIVE        | 780 S.F.          |
| PORCH               | 150 S.F.          |
| <b>TOTAL</b>        | <b>2,550 S.F.</b> |

| NUM | RADIUS  | ARC    | DELTA     | CHORD BRG   | CHORD  |
|-----|---------|--------|-----------|-------------|--------|
| C1  | 10.00'  | 15.71' | 90°00'00" | N41°18'24"E | 14.14' |
| C2  | 255.00' | 95.45' | 21°26'45" | N75°35'01"E | 94.89' |



SCALE: 1" = 40'

**NOTES**

1. THIS SURVEY SUBJECT TO ANY FACTS THAT MAY BE DISCLOSED BY A FULL AND ACCURATE TITLE SEARCH.
2. THIS MAP MAY NOT BE A CERTIFIED SURVEY AND HAS NOT BEEN REVIEWED BY A LOCAL GOVERNMENT AGENCY FOR COMPLIANCE WITH ANY APPLICABLE LAND DEVELOPMENT REGULATIONS AND HAS NOT BEEN REVIEWED FOR COMPLIANCE WITH RECORDING REQUIREMENTS FOR PLATS.

PLOT PLAN  
 PRELIMINARY PLAT- NOT FOR RECORDATION,  
 CONVEYANCE OR SALES

REV CODE: 1.FLIP, 2.PLAN, 3.ROTATE, 4.MOVE, 5.SS  
 6.SEVERAL OF ABOVE, 7.LAND FEATURE, 8. OTHER

REV2: SEP. 13, 2024(8)  
 REV1: JULY 31, 2024(7)  
 DATE: JULY 23, 2024

F.B. \_\_\_\_\_

**RWK, PA**

**ENGINEERING ~ SURVEYING**

CORPORATE LICENSE: C-1771  
 101 W. MAIN ST., SUITE 202  
 GARNER, NC 27529  
 PHONE (919) 779-4854  
 FAX (919) 779-4056