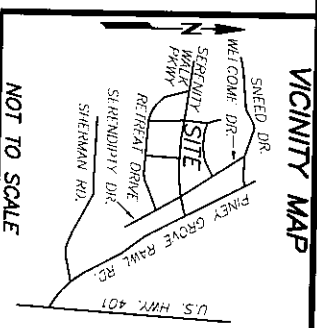


CURVE TABLE						
CURVE	DELTA	RADIUS	ARC	CHORD	TANGENT	CHORD BRG
C1	7°04'56"	525.00'	64.89'	64.85'	32.49'	N 07°54'47" W
LINE TABLE						
LINE	BEARING	DISTANCE				
L1	S 00°38'48" W	1.34'				
L2	S 13°45'20" E	41.61'				
L3	S 03°52'39" W	106.86'				
L4	S 22°10'56" E	143.16'				



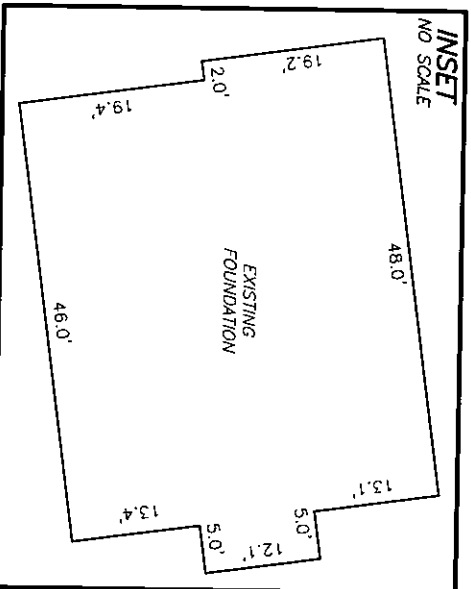
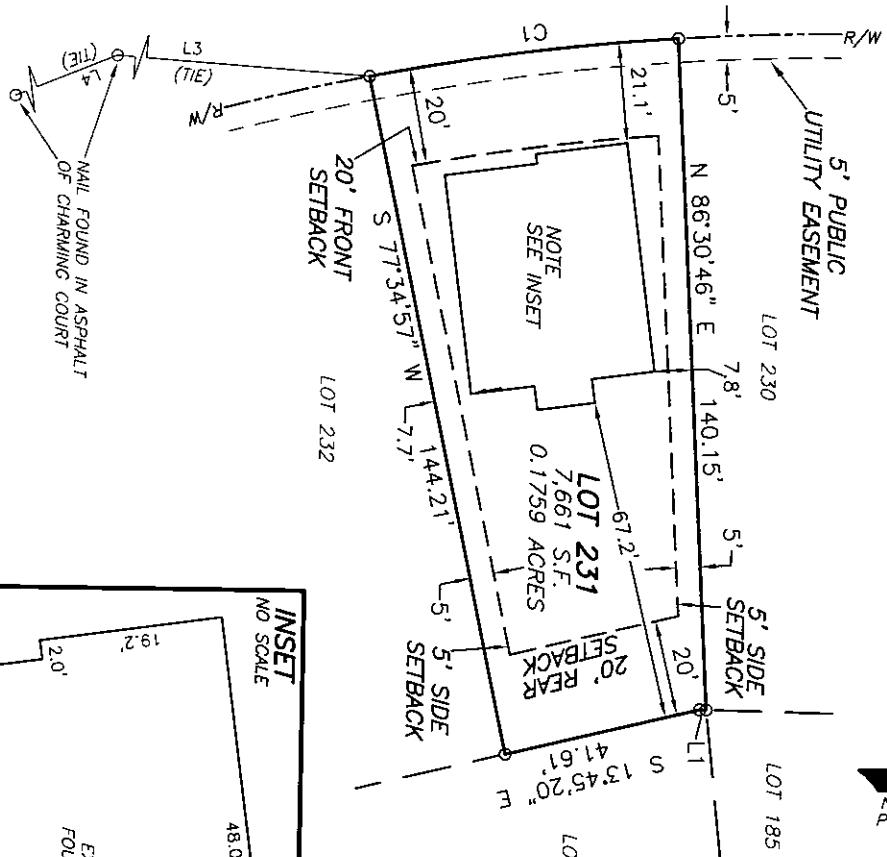
NOT TO SCALE

REFERENCES:
 1. D.B. 4218 PG. 2931
 PIN: 0645-93-1410.000
 PID: 08065502 0032 71

NOTICE OF DEVELOPMENT GUIDELINES:
 2. D.B. 4149, PG. 210
 RESTRICTIVE COVENANTS:
 3. D.B. 4109, PG. 612

N.C. GRID NORTH NAD83 (2011)
 P.B. 2023, PG.472-482

CHARMING COURT
 (50' PUBLIC R/W & UTILITY)



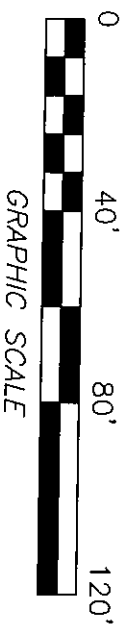
SETBACKS
 >43' LOT WIDTHS
 FRONT YARD-20'
 SIDE YARD-5'
 REAR YARD-20'
 CORNER SIDE-12'

- NOTES:
1. ALL EASEMENTS, RIGHTS OF WAY AND BOUNDARY INFORMATION TAKEN FROM P.B. 2023, PG. 472-482 UNLESS OTHERWISE NOTED.
 2. PROPERTY IS SUBJECT TO ALL EASEMENTS AND RESTRICTIONS OF RECORD. NO TITLE EXAMINATION HAS BEEN DONE BY ROBINSON & PLANTE, P.C.

NOTE:
 RATIO OF PRECISION IS 1:10,000+, MISCLOSURE WAS DISTRIBUTED BY THE COMPASS METHOD. THE DISTANCES ON THIS MAP ARE ADJUSTED HORIZONTAL GROUND UNLESS NOTED OTHERWISE. ALL AREAS ARE CALCULATED BY COORDINATE COMPUTATION.

LOT 231 SERENITY SUBDIVISION
 PHASE 2E
 64 CHARMING COURT
 HARNETT COUNTY
 FUQUAY-VARINA, N.C. 27526

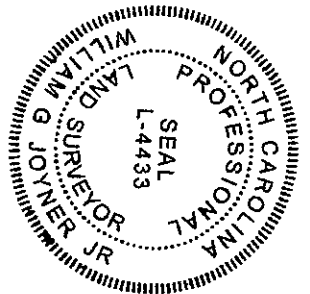
REFERENCE: PLAT BOOK 2023 PAGE 472-482.



FILE: STWLOT231FD

I CERTIFY THAT THIS MAP WAS DRAWN UNDER MY SUPERVISION FROM AN ACTUAL SURVEY MADE UNDER MY SUPERVISION. DESCRIPTION RECORDED IN RECORDS AS SHOWN THAT THE BOUNDARIES NOT SURVEYED ARE INDICATED AS DRAWN FROM INFORMATION IN THIS MAP MEET THE REQUIREMENTS OF THE STANDARDS OF PRACTICE FOR LAND SURVEYING IN NORTH CAROLINA (21 NCAC 56.16000). THIS 29th DAY OF OCTOBER, 2024.

William G. Jovner Jr.
 PROFESSIONAL LAND SURVEYOR L-4433



ROBINSON & PLANTE PC
 LAND SURVEYING
 C-2687
 970 TRINITY ROAD
 RALEIGH, N.C. 27607
 PHONE (919) 859-6030
 FAX (919) 859-6032

DATE: 10-28-24 SCALE: 1"=40'