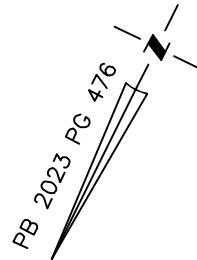
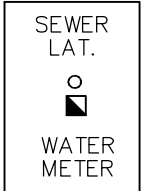


**VICINITY MAP**  
Not To Scale



IMPERVIOUS SURFACE AREA	
DESCRIPTION	AREA
HOUSE w/ PORCH	1,228 S.F.
PATIO/HVAC	109 S.F.
DRIVEWAY & WALKS	322 S.F.
TOTAL (PROPOSED)=	1,659 S.F.
*TOTAL (ALLOWED)=	2,530 S.F.

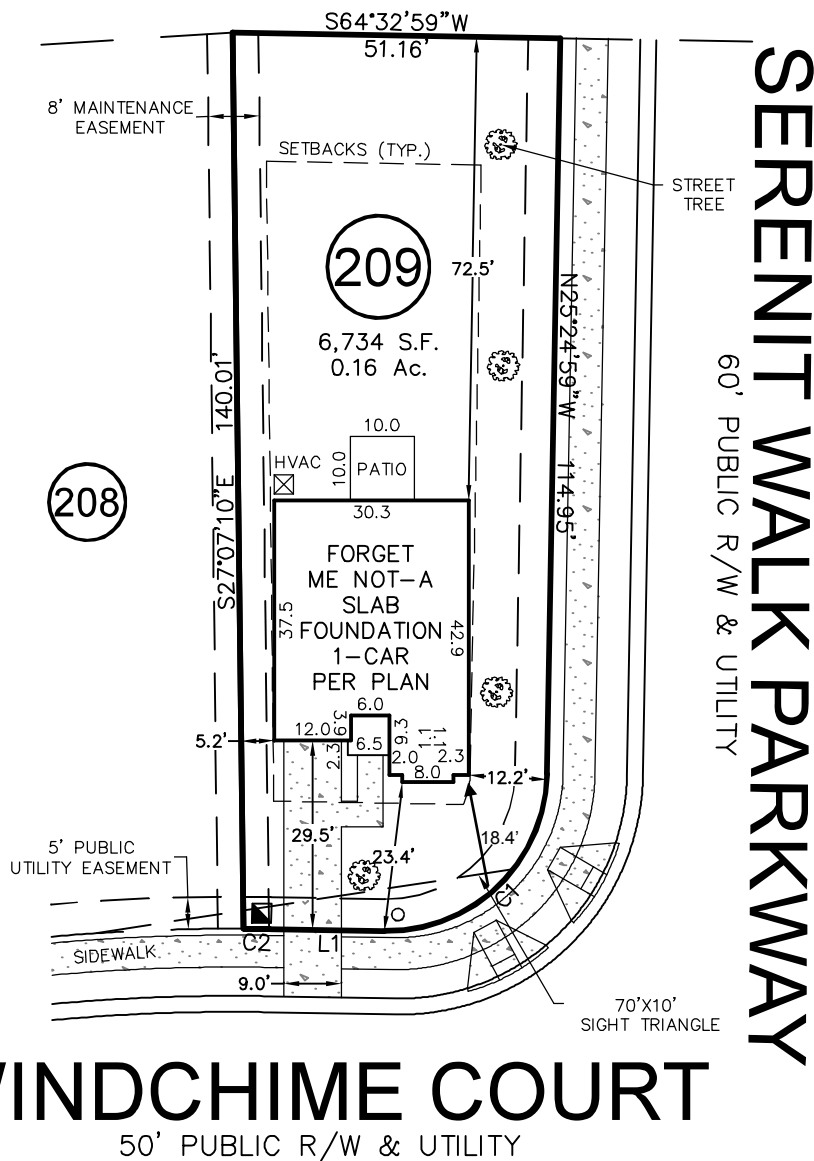
\*PB 2023 PG 482



SETBACKS: (PB 2023 PG 472)

- FRONT - 20'
- REAR - 20'
- SIDE - 5'
- CORNER YARD - 12'

OPEN SPACE 10  
BM 2023 PG 343-356



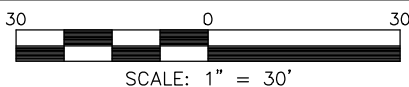
LINE	BEARING	DISTANCE
L1	N64°35'01"E	17.79'

CURVE	RADIUS	ARC LENGTH	CH LENGTH	CH BEARING
C1	25.00'	39.28'	35.36'	N19°35'01"E
C2	325.00'	4.21'	4.21'	N64°12'44"E

THIS PROPERTY MAY BE SUBJECT TO ANY AND ALL APPLICABLE DEED RESTRICTIONS, EASEMENTS, RIGHT-OF-WAY, UTILITIES AND RESTRICTIVE COVENANTS WHICH MAY BE OF RECORD OR IMPLIED

THIS DRAWING DOES NOT REFLECT AS-BUILT INFORMATION

**PRELIMINARY PLAT**  
NOT FOR RECORDATION, CONVEYANCES, OR SALES.



**HOUSE LOCATION PLOT PLAN**

FOR  
#14 WINDCHIME COURT  
LOT 209, SERENITY SUBDIVISION, PHASE 2C, 2D, 2E & 2F  
(LOTS LESS THAN 9,000 SF) LOTS 189-235  
Hector's Creek Township, Harnett County, North Carolina

PROPERTY OF: GARMAN HOMES  
MAP BOOK 2023 PAGE 350-356 DEED REFERENCE \_\_\_\_\_

DRAWN: JTC    SURVEYED: N/A    CHECKED: DMR    DATE: AUGUST 13, 2024

**RESIDENTIAL LAND SERVICES, PLLC.**

1917 Evans Road  
Cary, North Carolina 27513  
Phone (919) 378-9316  
Firm License # P-0873