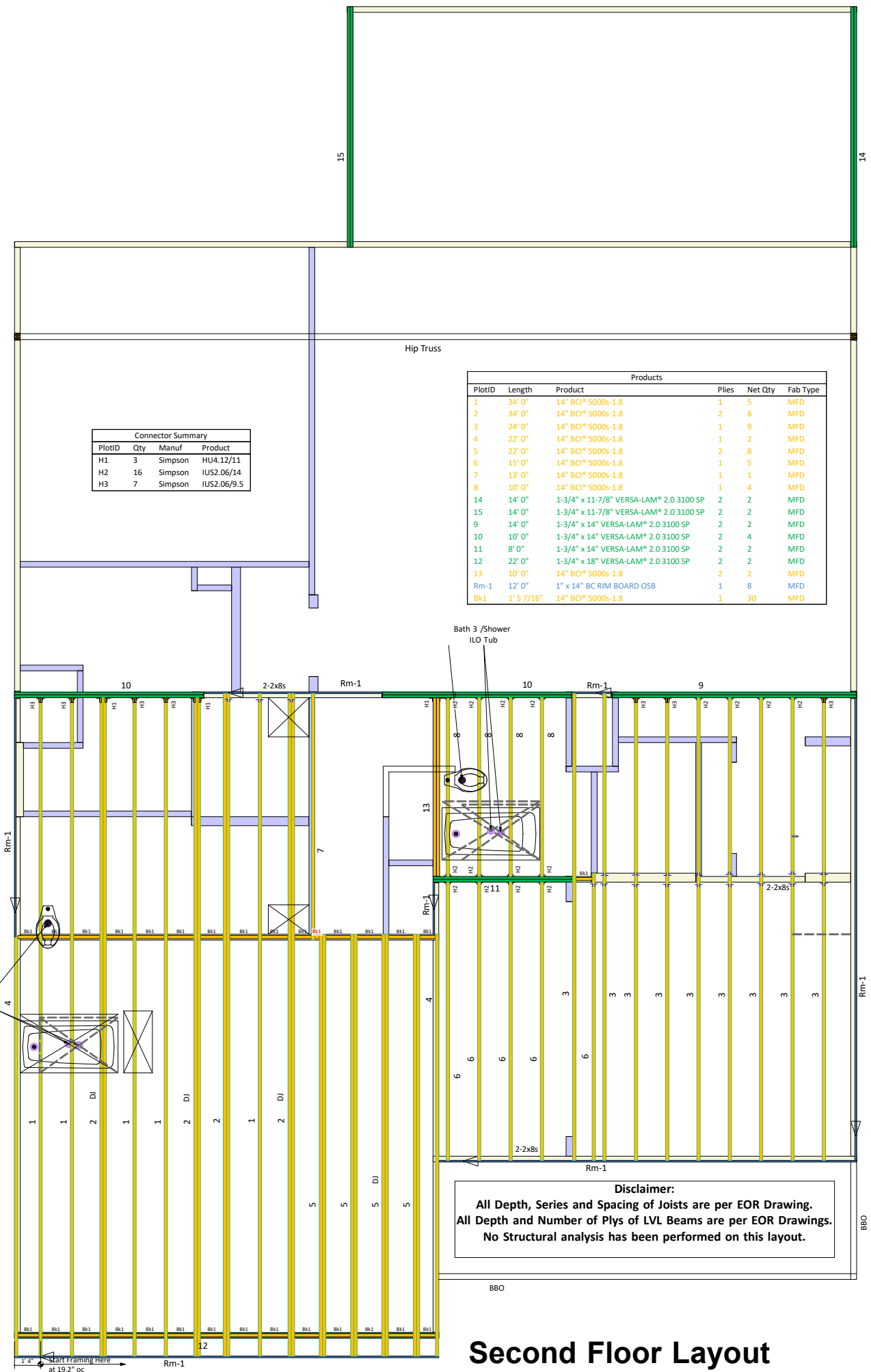


All I-Joist and Versa-Lam Beams
Must be Installed per The
Boise Cascade Installation Guide!

KB Homes
2939 D
32 Birchwood Grove

Revisions:	BY:

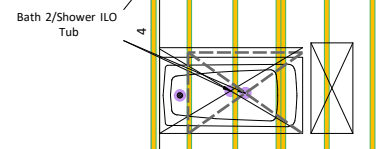
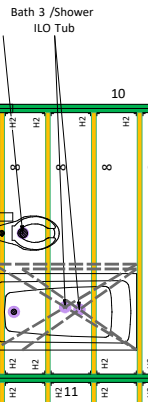


Connector Summary

PlotID	Qty	Manuf	Product
H1	3	Simpson	HU4.12/11
H2	16	Simpson	IUS2.06/14
H3	7	Simpson	IUS2.06/9.5

Products

PlotID	Length	Product	Plies	Net Qty	Fab Type
1	34' 0"	14" BCI* 5000s-1.8	1	5	MFD
2	34' 0"	14" BCI* 5000s-1.8	2	8	MFD
3	24' 0"	14" BCI* 5000s-1.8	1	9	MFD
4	22' 0"	14" BCI* 5000s-1.8	1	2	MFD
5	22' 0"	14" BCI* 5000s-1.8	2	8	MFD
6	15' 0"	14" BCI* 5000s-1.8	1	5	MFD
7	13' 0"	14" BCI* 5000s-1.8	1	1	MFD
8	10' 0"	14" BCI* 5000s-1.8	1	4	MFD
14	14' 0"	1-3/4" x 11-7/8" VERSA-LAM* 2.0 3100 SP	2	2	MFD
15	14' 0"	1-3/4" x 11-7/8" VERSA-LAM* 2.0 3100 SP	2	2	MFD
9	14' 0"	1-3/4" x 14" VERSA-LAM* 2.0 3100 SP	2	2	MFD
10	10' 0"	1-3/4" x 14" VERSA-LAM* 2.0 3100 SP	2	4	MFD
11	8' 0"	1-3/4" x 14" VERSA-LAM* 2.0 3100 SP	2	2	MFD
12	22' 0"	1-3/4" x 18" VERSA-LAM* 2.0 3100 SP	2	2	MFD
13	10' 0"	14" BCI* 5000s-1.8	2	2	MFD
Rm-1	12' 0"	1" x 14" BC RIM BOARD OSB	1	8	MFD
Bk1	1' 5 7/16"	14" BCI* 5000s-1.8	1	30	MFD



Disclaimer:
All Depth, Series and Spacing of Joists are per EOR Drawing.
All Depth and Number of Plies of LVL Beams are per EOR Drawings.
No Structural analysis has been performed on this layout.

Second Floor Layout

Squash Blocks Required
Under The Ends Of All LVL
And Point Loads For Load
Transfer - See Details

ALL DIMENSIONS AND CONDITIONS
TO BE REVIEWED AND APPROVED
BY BOTH THE CONTRACTOR AND
THE ENGINEER OF RECORD
PRIOR TO INSTALLATION

SALES PRESENTATION DRAWING
No structural or dimensional check has been made of this design
drawings of the building, therefore purchaser is to check and
approve all dimensions, quantities, loads, and details carefully.
This drawing has not been check by Boise Engineering.

KB Homes
2939 D
32 Birchwood Grove
84 Lumber EWP

BC FRAMER II
Plan Date: 08172018
Structural Date: 09122018
By: JP National
Sheet: 2/3