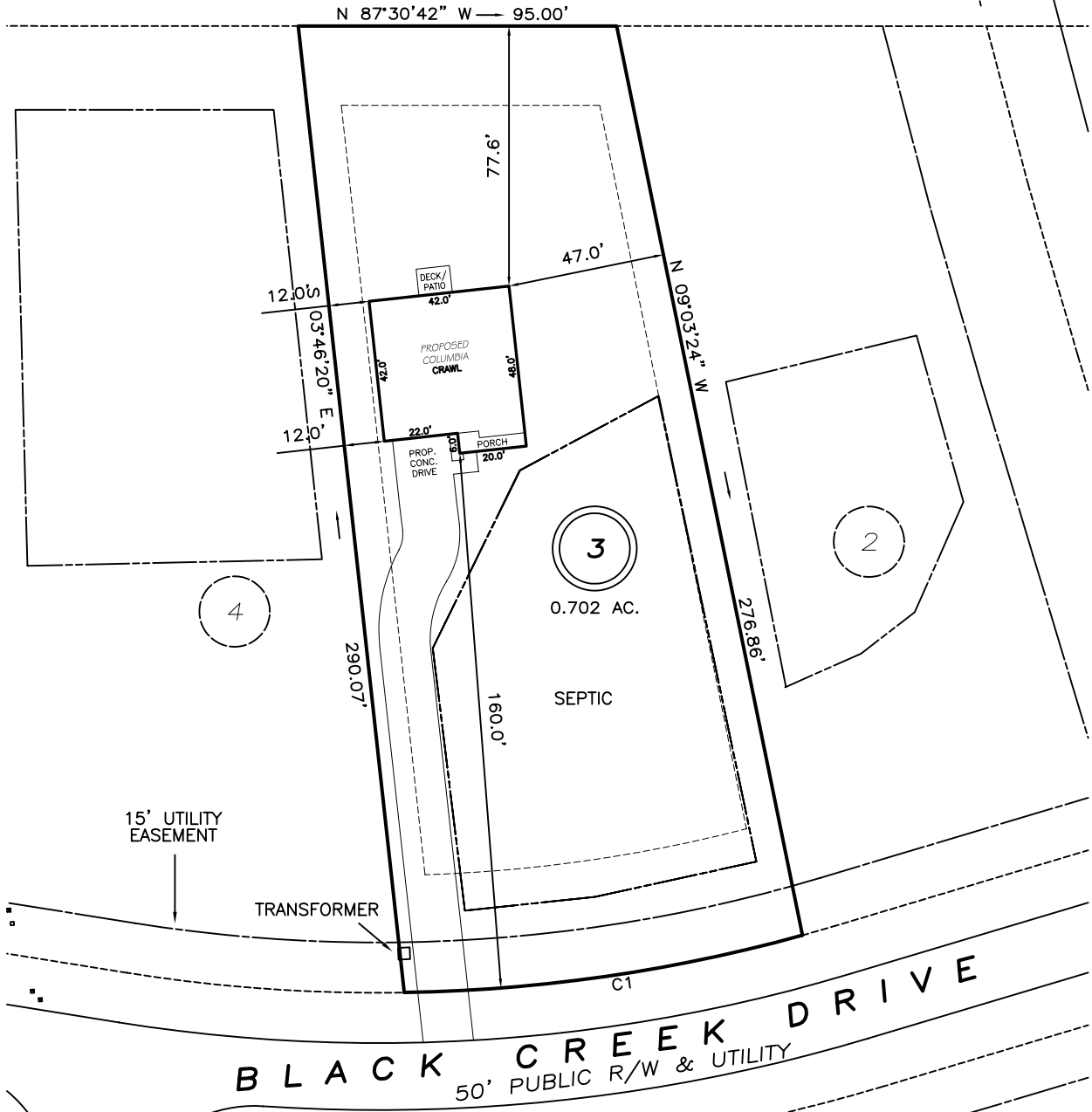


I, MICHAEL P. GRIFFIN, certify that under my direction and supervision this map was drawn from an actual field survey; that the error of closure of the survey as calculated by coordinates is 1: 10,000+; that the area shown hereon was calculated by coordinates.

Witness my hand and seal this day of MONTH 2024.

HARNETT CO. REGISTRY  
 BM 2023 PGS 14-15, 306-307

BS LAND LLC  
 PIN #0528-65-5623.000  
 D.B. 4178 PG. 163



SETBACKS

FRONT	35'
REAR	25'
SIDE	10'
CORNER SIDE	20'

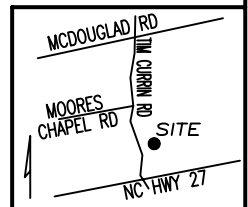
REVISION NEW PLANS, MOVE FORWARD 2/1/24

C1 R=475.00' L=120.32' N84°18'14"E 120.00'

**PRELIMINARY**  
 NOT FOR RECORDATION,  
 SALES OR CONVEYANCE

LEGEND

EIP	EXISTING IRON PIPE	WV	WATER VALVE
IPS	IRON PIPE SET	WM	WATER METER
R/W	RIGHT OF WAY	CO	CLEAN OUT
N/F	NOW OR FORMERLY	FH	FIRE HYDRANT
EIS	EXISTING IRON STAKE	CB	CATCH BASIN



**GLS** GRIFFIN LAND SURVEYING, INC.  
 P.O. BOX 148  
 FUQUAY-VARINA, NC 27526  
 (919) - 567 - 1963

PLOT PLAN FOR  
**D.R. HORTON**  
 MCKAY PLACE  
 LOT 3  
 BLACK CREEK DRIVE  
 LILLINGTON, N.C.  
 HARNETT COUNTY UPPER LITTLE RIVER TOWNSHIP

DRAWN BY **KDF**

DATE **1/30/24**

CHECKED BY **MPG**

SCALE **1" = 50'**