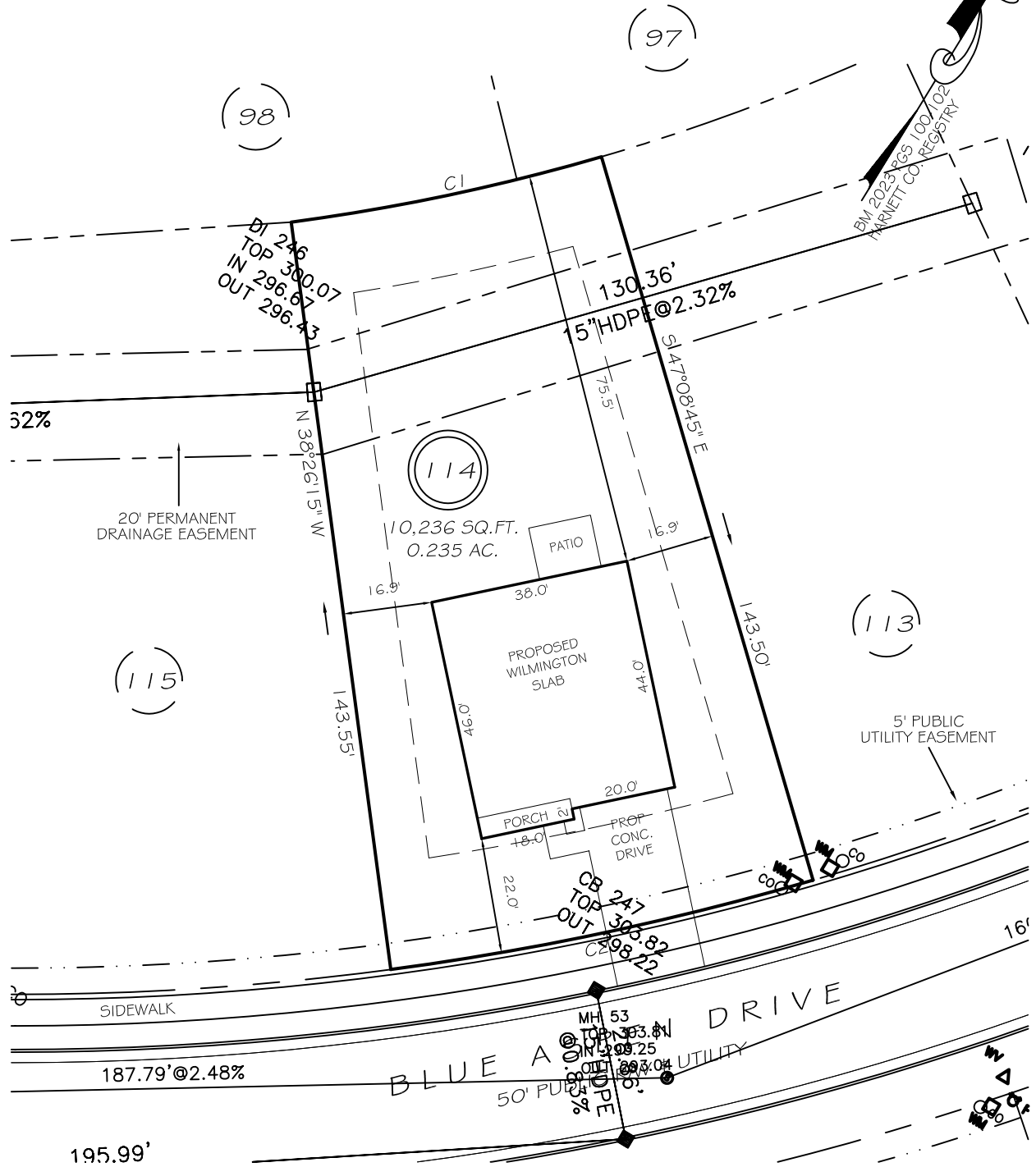


I, MICHAEL P. GRIFFIN, certify that under my direction and supervision this map was drawn from an actual field survey; that the error of closure of the survey as calculated by coordinates is 1: 10,000+; that the area shown hereon was calculated by coordinates.

Witness my hand and seal this day of MONTH 2024.



IMPERVIOUS AREAS

HOUSE	1708 SQ. FT.
DRIVE & WALKS	448 SQ. FT.
PATIO	120 SQ. FT.
TOTAL	2276 SQ. FT.
ALLOWED	3000 SQ. FT.

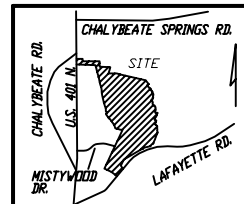
C1 R=398.00' L=60.41' S47°15'03"W 60.35'
 C2 R=541.00' L=82.23' S47°12'30"W 82.15'

SETBACKS

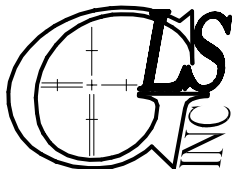
FRONT	20'
REAR	15'
SIDE	10'
CORNER SIDE	15'

LEGEND

EIP	EXISTING IRON PIPE	MH	MANHOLE
IPS	IRON PIPE SET	WM	WATER METER
R/W	RIGHT OF WAY	CO	CLEAN OUT
N/F	NOW OR FORMERLY	FH	FIRE HYDRANT
EIS	EXISTING IRON STAKE	CB	CATCH BASIN



P R E L I M I N A R Y
 NOT FOR RECORDATION,
 SALES OR CONVEYANCE



GRIFFIN LAND SURVEYING, INC.

P. O. BOX 148
 FUQUAY-VARINA, NC 27526
 (919) - 567-1963

PLOT PLAN
 FOR

D. R. HORTON

WOODGROVE

LOT 114

BLUE ASPEN DRIVE

NORTH CAROLINA

HARNETT CO. HECTOR'S CREEK TWSHP

DRAWN BY **KDF**

DATE **8/9/24**

CHECKED BY **MPG**

SCALE **1" = 30'**