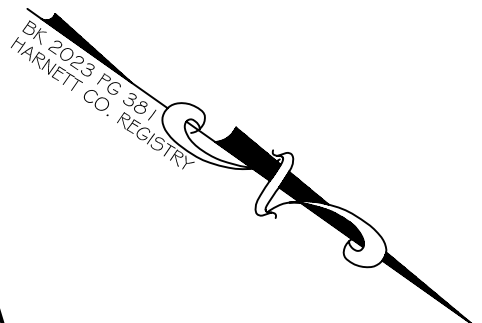


I, MICHAEL P. GRIFFIN, certify that under my direction and supervision this map was drawn from an actual field survey; that the error of closure of the survey as calculated by coordinates is 1: 10,000+; that the area shown hereon was calculated by coordinates.

Witness my hand and seal this day of MONTH 2024.

CA7



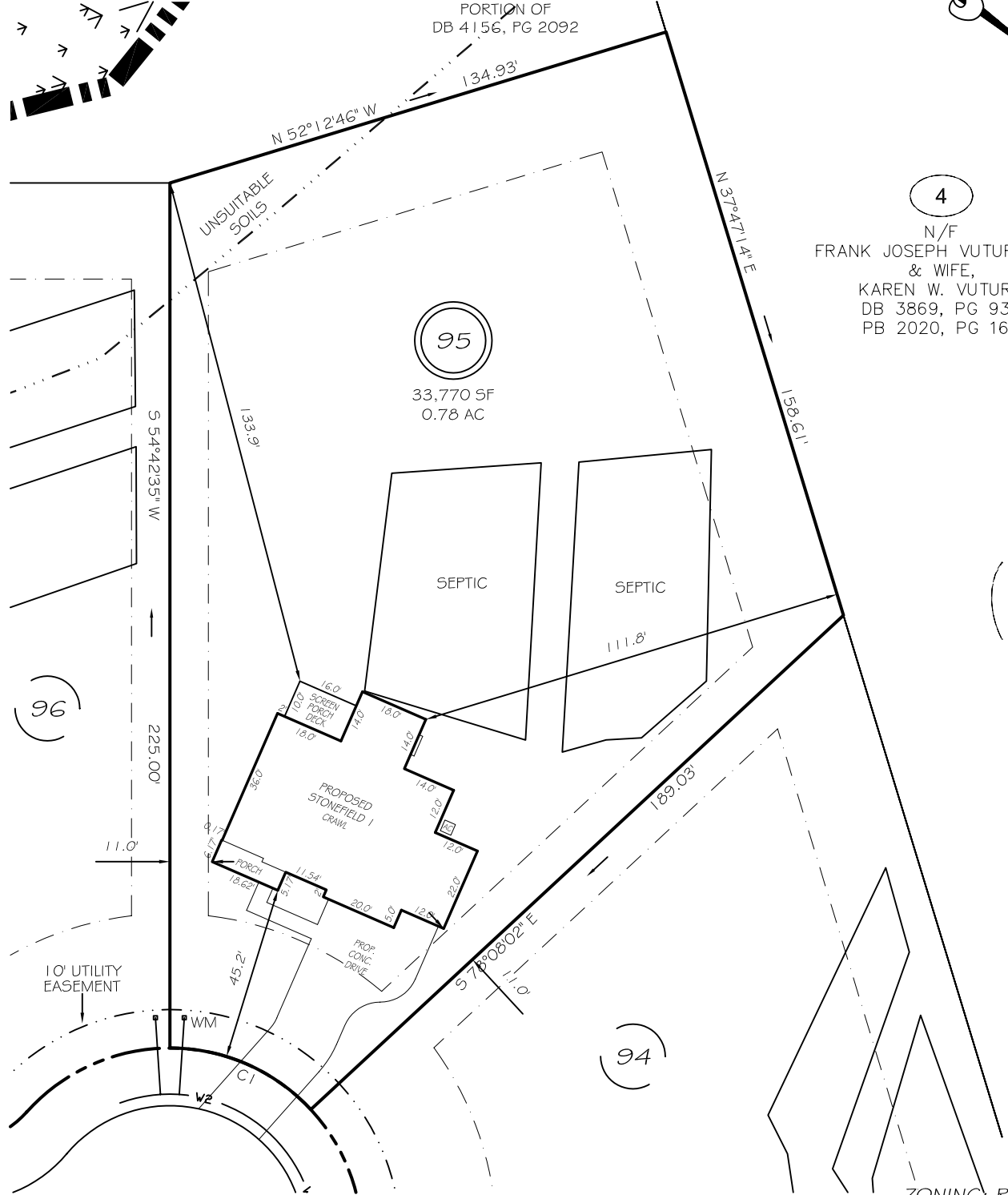
N/F  
DRB GROUP NORTH CAROLINA, LLC  
TRACT 1, PARCEL B OF  
DB 4156, PG 2082  
PORTION OF  
DB 4156, PG 2092



4

N/F  
FRANK JOSEPH VUTURO, JR.  
& WIFE,  
KAREN W. VUTURO  
DB 3869, PG 930  
PB 2020, PG 165

95  
33,770 SF  
0.78 AC



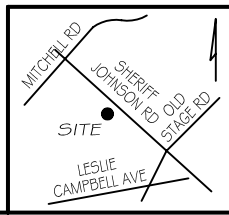
WHIMBREL COURT  
50' PUBLIC RW & UTILITY ACCESS

ZONING: RA-30  
SETBACKS  
FRONT 35'  
REAR 25'  
SIDE 10'  
CORNER SIDE 20'

CI R=50.00' L=41.15' S11°42'43"E 40.00'

LEGEND

EIP	EXISTING IRON PIPE	FES	FLARED END SECTION
IPS	IRON PIPE SET	WM	WATER METER
R/W	RIGHT OF WAY	CO	CLEAN OUT
N/F	NOW OR FORMERLY	FH	FIRE HYDRANT
EIS	EXISTING IRON STAKE	CB	CATCH BASIN



**PRELIMINARY**  
NOT FOR RECORDATION,  
SALES OR CONVEYANCE

**GRiffin LAND SURVEYING, INC.**  
P.O. BOX 148  
FUQUAY-VARINA, NC 27526  
(919) - 567 - 1963

**PLOT PLAN FOR**  
**DRB HOMES**  
BLAKE POND SUBDIVISION  
**LOT 95**  
139 WHIMBREL COURT  
LILLINGTON, N.C.  
HARNETT COUNTY NEILL'S CREEK & GROVE TOWNSHIP

DRAWN BY <b>KDF</b>	DATE <b>7/25/24</b>
CHECKED BY <b>MPG</b>	SCALE <b>1" = 40'</b>