

**AOWE ATO INSTALLATION REPORT
PACK-ONE PLLC
Stephen Bristow
920 Garner Road
Selma NC 27576
919-906-4737
Stevebristow57@gmail.com**

November 21, 2024

RE: Briarwood Subdivision Lot 3 Installation Revision- Line
Revision 61 Knoll Way, Sanford NC 27332
PIN: 9588-65-4594

Ownership:
Smith Douglas Builders
Natascha Clark
nclark@smithdouglas.com
760.485.4115

Septic System Installer:
Ricky Noto
A and R Residential
845-742-8576

Harnett County Health Department:

The septic drainfield was installed with a Infiltrator Quick 4 Connect System adding two endcaps to the lines. This resulted in an increased line length to 62' as seen in the attached "As Built" diagram. A serial distribution line was also installed. I find these changes acceptable to meet the state requirements.

Please let me know if you have any questions,



Stephen W. Bristow, NCLSS # 1167, NC AOWE # 12, NC REHS #904

Attached:
"As Built" Diagram

Lot 3 Briarwood Bluff :: Septic Layout Detail "As Built"

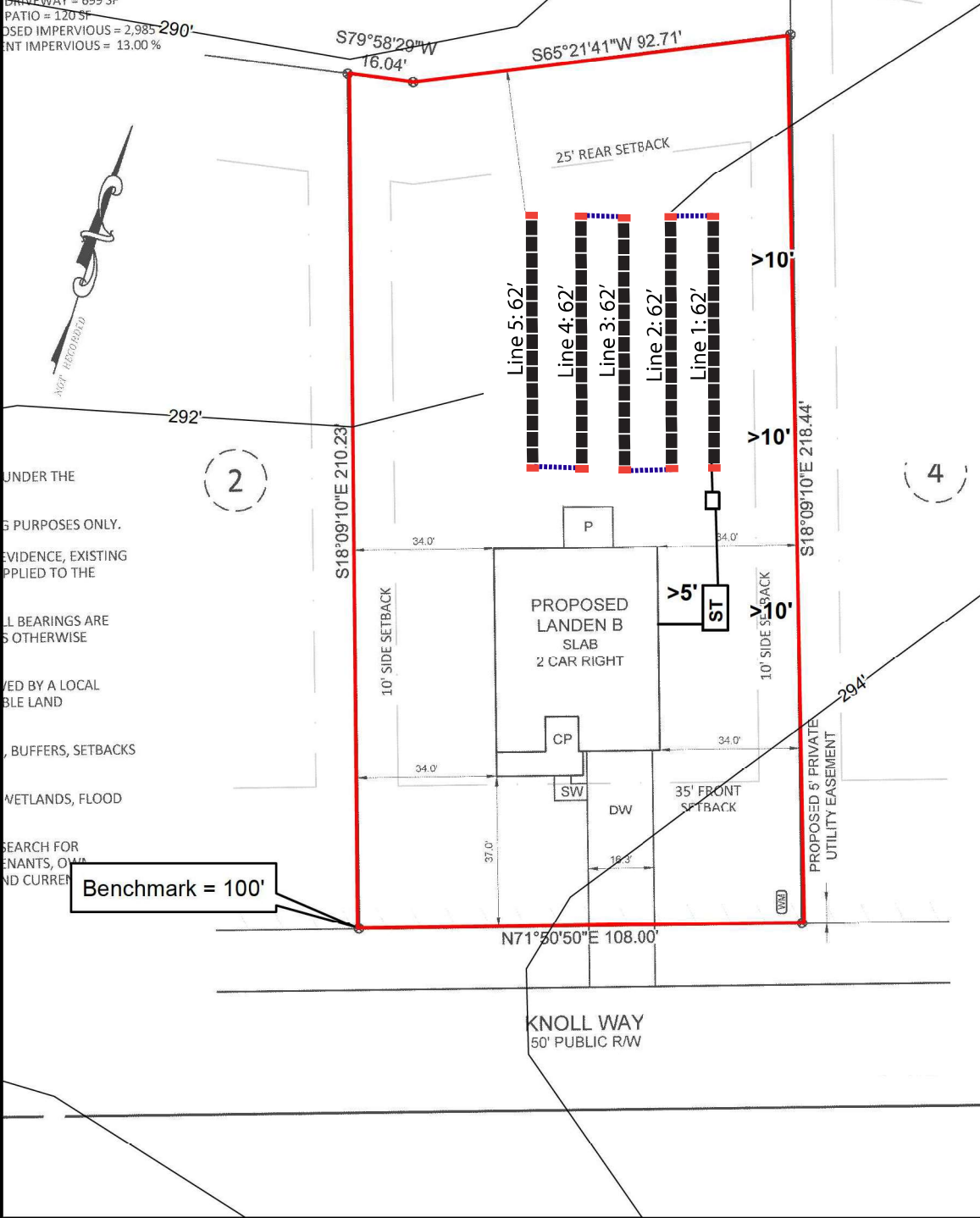
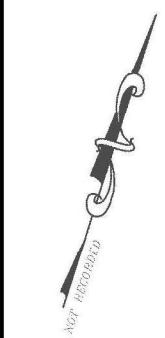
INFORMATION:

LOT AVAILABLE
 EVIDENCE: DB. 3922 PG. 119
 LOT AREA = 0.527 AC = 22,961 SF
 HOUSE = 1,932 SF
 PORCH = 194 SF
 SIDEWALK = 40 SF
 DRIVEWAY = 699 SF
 PATIO = 120 SF
 PERCENT IMPERVIOUS = 2,985
 PERCENT IMPERVIOUS = 13.00 %

BUILDING SETBACKS
 FRONT - 35'
 SIDE - 10'
 REAR - 25'
 STREET SIDE - 20'



Bateman & Associates
 Engineers
 2524 Reliance Avenue, Asheville, NC
 www.batemannc.com



Elevation Table	
Benchmark = 100'	
Line 1	= 99.4'
Line 2	= 99.3'
Line 3	= 99.2'
Line 4	= 99.2'
Line 5	= 99.1'
Line 6	= 99.1'
Line 7	= 99.0'
Line 8	= 99.0'

System Details	
Initial System	1000 Gal Tank
	0.35 gpd/sqft
Lines 1-5	(310')
Accepted - Gravity	Distribution - Serial
	Product - Q4 Chamber
	18" MTD
Repair System	1000 Gal Tank
	0.35 gpd/sqft
Lines 6-8	(180')
Accepted - Gravity	Product - PPBS
	20" MTD

Benchmark = 100'

Legend:

- Quick 4 Chamber (4' Panels)
- Multiport Endcap
- Serial Line

Map provided by PAC-One LLC
 [] Locations are approximations and []
 [] are provided for reference only []
 Parcel data provided by: Harnett County
 Elevation data provided by: NCDOT

Coordinate System: NAD 1983 StatePlane North Carolina FIPS 3200
 Projection: Lambert Conformal Conic
 Datum: North American 1983
 Units: Foot US

1 inch = 40 feet
 0 5 10 20 30 40 Feet