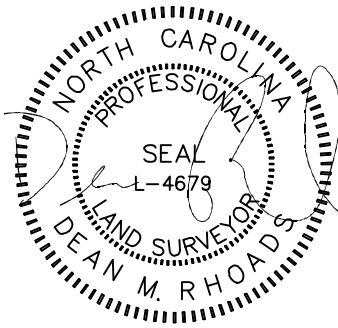


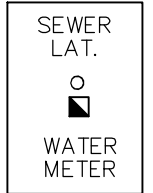


**VICINITY MAP**  
Not To Scale



IMPERVIOUS SURFACE AREA	
DESCRIPTION	AREA
HOUSE w/ PORCH	1,351 S.F.
PATIO/HVAC	109 S.F.
DRIVEWAY & WALKS	440 S.F.
TOTAL (PROPOSED)=	1,900 S.F.
*TOTAL (ALLOWED)=	2,530 S.F.

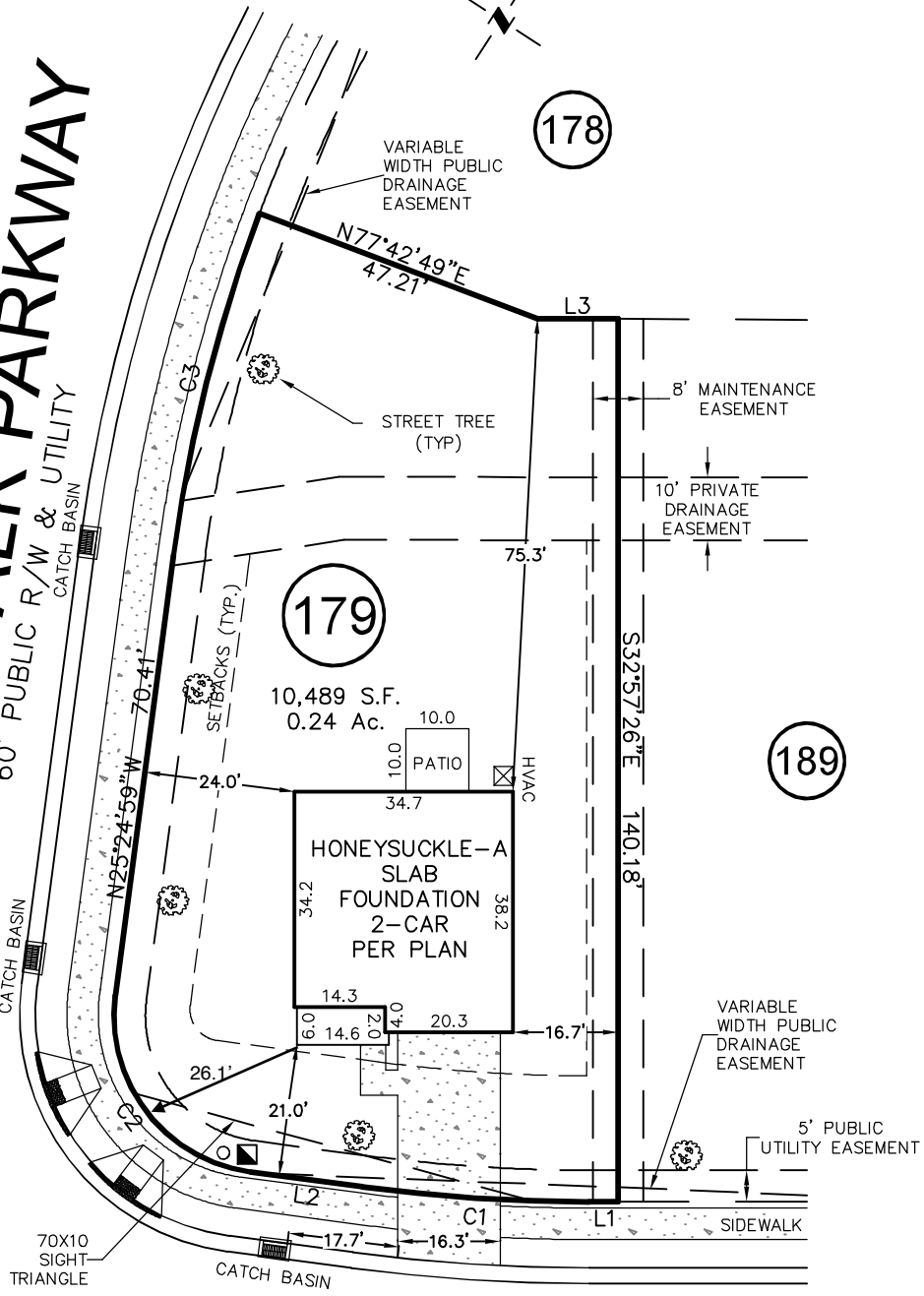
\*PB 2023 PG 493



SETBACKS: (PB 2023 PG 483)

- FRONT - 20'
- REAR - 20'
- SIDE - 5'
- CORNER YARD - 12'

**SERENITY WALK PARKWAY**  
60' PUBLIC R/W & UTILITY



**WINDCHIME COURT**

50' PUBLIC R/W & UTILITY

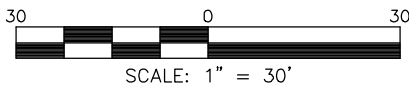
LINE	BEARING	DISTANCE
L1	S57°02'34"W	4.57'
L2	S64°35'01"W	17.79'
L3	N57°21'00"E	12.73'

CURVE	RADIUS	ARC LENGTH	CH LENGTH	CH BEARING
C1	275.00'	36.19'	36.17'	S60°48'47"W
C2	25.00'	39.27'	35.36'	N70°24'59"W
C3	245.00'	56.15'	56.02'	N18°51'05"W

THIS PROPERTY MAY BE SUBJECT TO ANY AND ALL APPLICABLE DEED RESTRICTIONS, EASEMENTS, RIGHT-OF-WAY, UTILITIES AND RESTRICTIVE COVENANTS WHICH MAY BE OF RECORD OR IMPLIED

THIS DRAWING DOES NOT REFLECT AS-BUILT INFORMATION

**PRELIMINARY PLAT**  
NOT FOR RECORDATION, CONVEYANCES, OR SALES.



**HOUSE LOCATION PLOT PLAN**

FOR  
#15 WINDCHIME COURT  
LOT 179, SERENITY SUBDIVISION, PHASE 2C, 2D, 2E & 2F  
(LOTS LESS THAN 9,000 SF) LOTS 171-188, & 236-247  
Hector's Creek Township, Harnett County, North Carolina

PROPERTY OF: GARMAN HOMES  
MAP BOOK 2023 PAGE 483-493 DEED REFERENCE \_\_\_\_\_

DRAWN: JTC    SURVEYED: N/A    CHECKED: DMR    DATE: AUGUST 8, 2024

**RESIDENTIAL LAND SERVICES, PLLC.**

1917 Evans Road  
Cary, North Carolina 27513  
Phone (919) 378-9316  
Firm License # P-0873