

PLOT PLAN FOR
NEW HOME, INC.
 217 BEACON HILL ROAD
 LOT 17, DUNCAN'S CREEK, PHASE 1 RECOMBINATION
 UPPER LITTLE CREEK TOWNSHIP, HARNETT COUNTY, NORTH CAROLINA

13

THOMAS MANOR
 B.M. 2013, PG. 279

B.M. 2024, PG. 355



S02°10'52"W 150.00'

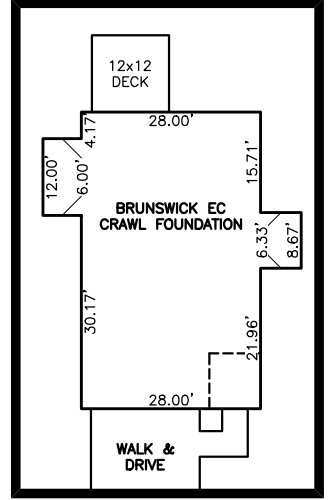
LEGEND

- ▲ AIR CONDITIONER
- BC BACK OF CURB
- BFP BACK FLOW PREVENTER
- CLEANOUT
- CURB INLET
- DHS DRILL HOLE SET
- ECM EXISTING CONCRETE MONUMENT
- EDH EXISTING DRILL HOLE
- EIS EXISTING IRON STAKE
- EIP EXISTING IRON PIPE
- EM ELECTRIC METER
- EPK EXISTING PK NAIL
- ES ELECTRIC STUB
- FLA FLARED END SECTION
- FHY FIRE HYDRANT
- FOP FIBER OPTIC PEDESTAL
- GM GAS METER
- GUY GUY
- INV INVERT
- IPS IRON PIPE SET
- IRS IRON ROD SET
- LPO LIGHT POLE
- MNS MAGNETIC NAIL SET
- MSW MANHOLE SANITARY SEWER
- MST MANHOLE STORM SEWER
- OHW OVERHEAD WIRES
- PKS PK NAIL SET
- PNS POINT NOT SET
- RRS RAIL ROAD SPIKE
- TPE TELEPHONE PEDESTAL
- TRF TRANSFORMER
- CTP CABLE TV PEDESTAL
- UPU UTILITY POLE
- WM WATER METER
- WV WATER VALVE
- YI YARD INLET
- FM FIELD MEASUREMENT

SETBACK LINES

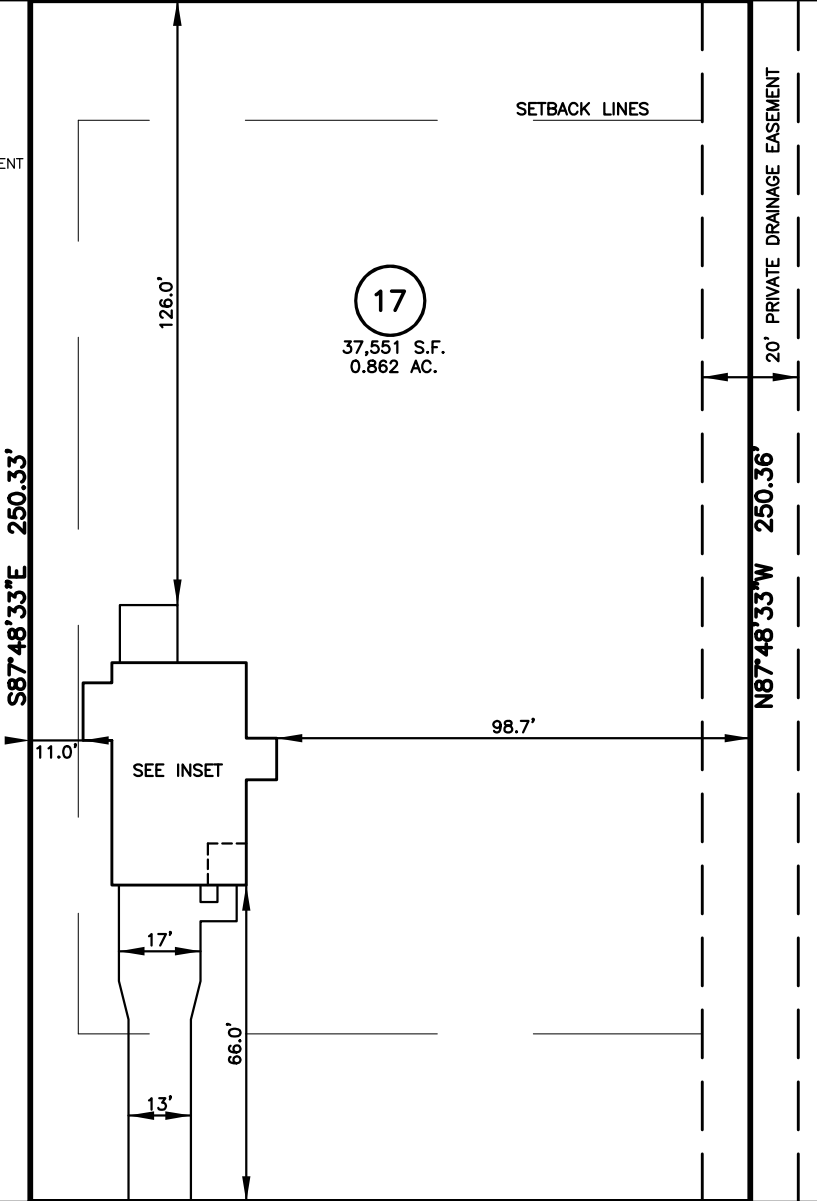
17

37,551 S.F.
 0.862 AC.



INSET SCALE: 1"=30'

16



18

N02°11'27"E 150.00'

BEACON HILL ROAD
 50' PUBLIC R/W

IMPERVIOUS SURFACES	S.F.
HOUSE	1,430
WALK & DRIVE	1,000
DECK	150
TOTAL	2,580

SETBACK INFO

FRONT: 35'
 REAR: 25'
 SIDES: 10'
 CORNER SIDE: 20'

REFERENCES:

B.M. 2022, PGS. 594-596
 B.M. 2024, PG. 355



SCALE: 1" = 40'

NOTES

1. THIS SURVEY SUBJECT TO ANY FACTS THAT MAY BE DISCLOSED BY A FULL AND ACCURATE TITLE SEARCH.
2. THIS MAP MAY NOT BE A CERTIFIED SURVEY AND HAS NOT BEEN REVIEWED BY A LOCAL GOVERNMENT AGENCY FOR COMPLIANCE WITH ANY APPLICABLE LAND DEVELOPMENT REGULATIONS AND HAS NOT BEEN REVIEWED FOR COMPLIANCE WITH RECORDING REQUIREMENTS FOR PLATS.

PLOT PLAN
 PRELIMINARY PLAT- NOT FOR RECORDATION,
 CONVEYANCE OR SALES

REV CODE: 1.FLIP, 2.PLAN, 3.ROTATE, 4.MOVE, 5.SS
 6.SEVERAL OF ABOVE, 7.LAND FEATURE, 8. OTHER

REV1: JULY 29, 2024(2)
 DATE: APRIL 23, 2024

F.B. _____

RWK, PA

ENGINEERING ~ SURVEYING

CORPORATE LICENSE: C-1771
 101 W. MAIN ST., SUITE 202
 GARNER, NC 27529
 PHONE (919) 779-4854
 FAX (919) 779-4056