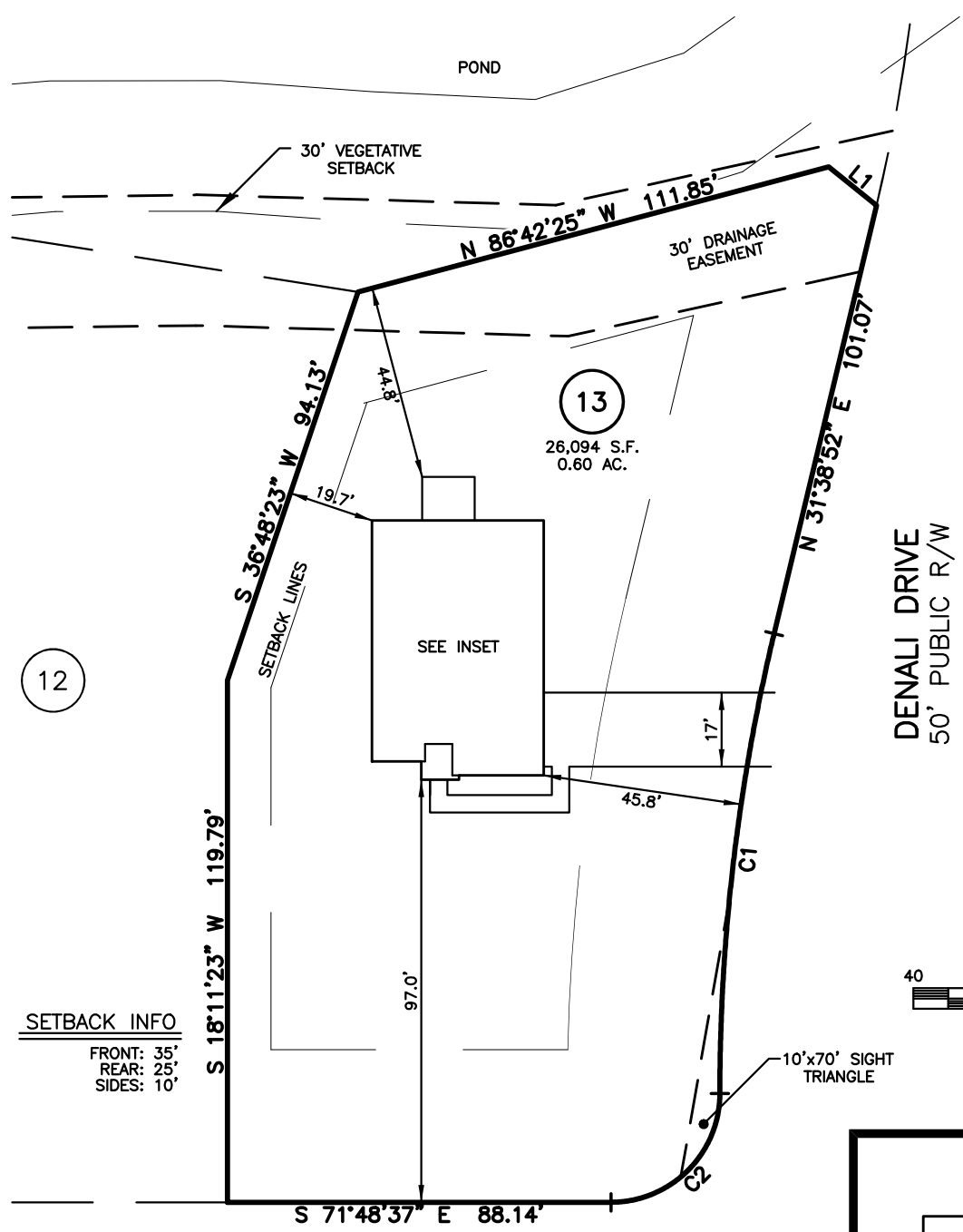
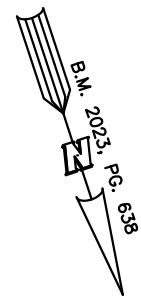


**PLOT PLAN FOR  
MATTAMY HOMES, LLC.**  
225 BERING CIRCLE  
LOT 13, RIVERFALL SUBDIVISION, PHASE ONE  
BLACK RIVER TOWNSHIP, HARNETT COUNTY, NORTH CAROLINA



12

13  
26,094 S.F.  
0.60 AC.

DENALI DRIVE  
50' PUBLIC R/W

IMPERVIOUS SURFACES	S.F.
HOUSE	2,290
WALK & DRIVE	990
PORCH	120
TOTAL	3,400
MAX. IMPERVIOUS	5,500

REFERENCES:  
B.M. 2023, PG. 638



**SETBACK INFO**

FRONT:	35'
REAR:	25'
SIDES:	10'

S 18°11'23" W 119.79'

S 36°48'23" W 94.13'

SEE INSET

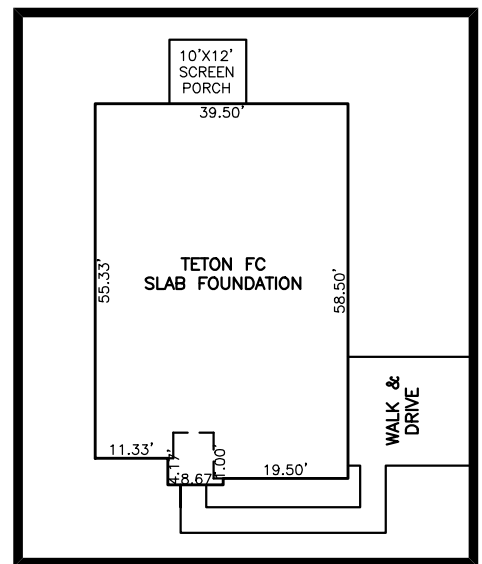
S 71°48'37" E 88.14'  
**BERING CIRCLE**  
50' PUBLIC R/W

LINE	BEARING	DISTANCE
L1	N 32°42'21" W	14.14'

NUM	RADIUS	ARC	DELTA	CHORD BRG	CHORD
C1	453.50'	106.52'	13°27'29"	N 24°55'08" E	106.28'
C2	25.00'	39.27'	89°58'56"	N 63°11'23" E	35.36'

**LEGEND**

- |   |  |
|---|--|
| <ul style="list-style-type: none"> <li>△ AIR CONDITIONER</li> <li>BC BACK OF CURB</li> <li>BFP BACK FLOW PREVENTER</li> <li>○ CLEANOUT</li> <li>◻ CURB INLET</li> <li>DHS DRILL HOLE SET</li> <li>ECM EXISTING CONCRETE MONUMENT</li> <li>EDH EXISTING DRILL HOLE</li> <li>EIS EXISTING IRON STAKE</li> <li>EIP EXISTING IRON PIPE</li> <li>EM ELECTRIC METER</li> <li>EPK EXISTING PK NAIL</li> <li>ES ELECTRIC STUB</li> <li>FLR FLARED END SECTION</li> <li>FHY FIRE HYDRANT</li> <li>FOP FIBER OPTIC PEDESTAL</li> <li>GM GAS METER</li> <li>→ GUY</li> </ul> | <ul style="list-style-type: none"> <li>INV. INVERT</li> <li>IPS IRON PIPE SET</li> <li>IRS IRON ROD SET</li> <li>○ LIGHT POLE</li> <li>MNS MAGNETIC NAIL SET</li> <li>○ MANHOLE SANITARY SEWER</li> <li>○ MANHOLE STORM SEWER</li> <li>OHV OVERHEAD WIRES</li> <li>PKS PK NAIL SET</li> <li>PNS POINT NOT SET</li> <li>RRS RAIL ROAD SPIKE</li> <li>TEL TELEPHONE PEDESTAL</li> <li>TRANSFORMER</li> <li>CABLE TV PEDESTAL</li> <li>UTILITY POLE</li> <li>WATER METER</li> <li>WATER VALVE</li> <li>YARD INLET</li> <li>( ) FIELD MEASUREMENT</li> </ul> |
|---|--|



INSET SCALE: 1" = 30'

**NOTES**

- THIS SURVEY SUBJECT TO ANY FACTS THAT MAY BE DISCLOSED BY A FULL AND ACCURATE TITLE SEARCH.
- THIS MAP MAY NOT BE A CERTIFIED SURVEY AND HAS NOT BEEN REVIEWED BY A LOCAL GOVERNMENT AGENCY FOR COMPLIANCE WITH ANY APPLICABLE LAND DEVELOPMENT REGULATIONS AND HAS NOT BEEN REVIEWED FOR COMPLIANCE WITH RECORDING REQUIREMENTS FOR PLATS.

PLOT PLAN  
PRELIMINARY PLAT- NOT FOR RECORDATION,  
CONVEYANCE OR SALES

REV CODE: 1.FLIP, 2.PLAN, 3.ROTATE, 4.MOVE, 5.SS  
6.SEVERAL OF ABOVE, 7.LAND FEATURE, 8. OTHER

REV1: AUG. 14, 2024  
DATE: JULY 15, 2024

F.B. \_\_\_\_\_

**RWK, PA**  
ENGINEERING ~ SURVEYING  
CORPORATE LICENSE: C-1771  
101 W. MAIN ST., SUITE 202  
GARNER, NC 27529  
PHONE (919) 779-4854  
FAX (919) 779-4056