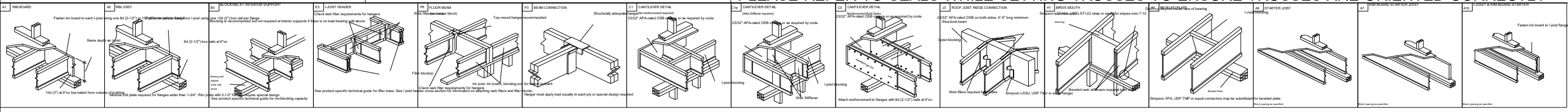


- All bracing, blocking, beams, purlins @ 2'0" o.c., ledger, etc. provided by others.
- Roof truss to roof truss connections provided by Riverside Roof Truss.
- Truss to building connections provided by others.

**Refer to Sealed drawings for connection detail of multiple ply trusses.**

**NOT ALL TRUSSES ARE SYMMETRICAL AND MAY NOT PERFORM CORRECTLY IF INSTALLED BACKWARDS. PLEASE REFER TO SEALS WHILE SETTING TRUSSES TO ENSURE TRUSSES ARE ORIENTED CORRECTLY**

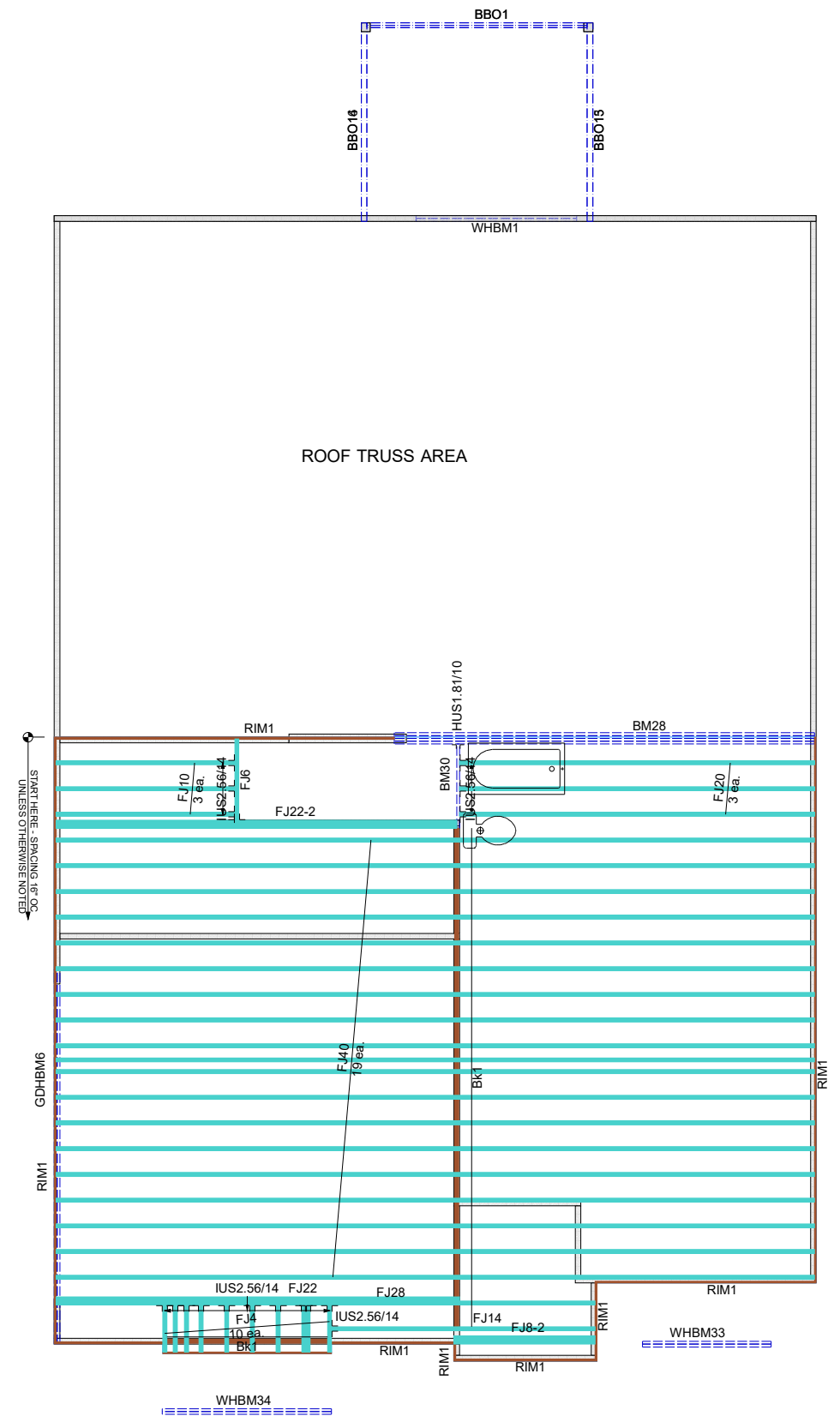


**SHOP DRAWING APPROVAL**  
 THIS LAYOUT IS THE SOLE SOURCE FOR FABRICATION OF TRUSSES AND VOIDS ALL PREVIOUS ARCHITECTURAL OR OTHER TRUSS LAYOUTS. REVIEW AND APPROVAL OF THIS LAYOUT MUST BE RECEIVED BEFORE ANY TRUSSES WILL BE BUILT. VERIFY ALL CONDITIONS TO INSURE AGAINST CHANGES THAT WILL RESULT IN EXTRA CHARGES TO YOU.

REVIEWED BY: \_\_\_\_\_ APPROVED BY: \_\_\_\_\_ DATE: \_\_\_\_\_

Products				
Net Qty	Plies	Product	Length	PlotID
19	1	14" NI-40x	40-00-00	FJ40
1	1	14" NI-40x	28-00-00	FJ28
1	1	14" NI-40x	22-00-00	FJ22
2	2	14" NI-40x	22-00-00	FJ22-2
3	1	14" NI-40x	20-00-00	FJ20
1	1	14" NI-40x	14-00-00	FJ14
3	1	14" NI-40x	10-00-00	FJ10
2	2	14" NI-40x	8-00-00	FJ8-2
1	1	14" NI-40x	6-00-00	FJ6
10	1	14" NI-40x	4-00-00	FJ4
2	2	1 3/4" x 9 1/4" (2.0E 3100) LVL	10-00-00	WHBM1
2	2	1 3/4" x 9 1/4" (2.0E 3100) LVL	10-00-00	WHBM34
2	2	1 3/4" x 9 1/4" (2.0E 3100) LVL	8-00-00	WHBM33
1	1	1 3/4" x 14" (2.0E 3100) LVL	6-00-00	BM30
4	4	1 3/4" x 23 7/8" LVL	22-00-00	BM28
2	2	1 3/4" x 23 7/8" LVL	20-00-00	GDHBM6
11	1	1 1/8" x 14" APA Rim Board	12-00-00	RIM1
1	1	14" NI-40x	29-00-00	Bk1

Connector Summary			
Product	Manuf	Qty	
HUS1.81/10	Simpson	1	
IUS2.56/14	Simpson	3	
IUS2.56/14	Simpson	1	
IUS2.56/14	Simpson	14	



**Hanger Conversion Chart**

Client:	<b>MATTAMY HOMES</b>		
Job Name:	<b>TETON FRENCH COUNTRY</b>		
Model:	<b>EWP 2ND FLOOR</b>		
Lot #:	Subdivision:		
Order #:	<b>24-4246-B</b>	Sales Rep:	<b>C Walden</b>
Designer:	<b>R S</b>	Date:	<b>7/12/2024</b>

**733 RIVER PARK DRIVE DANVILLE, VA 24540 (434) 793-0217 FAX: (434) 799-8767**

**RIVERSIDE ROOF TRUSS, LLC**

Roof Surface Area: 0 Sq. Ft.  
 Floor Surface Area: 9793 Sq. Ft.

