

LEGEND

- MATHEMATICAL POINT
- CONTROL CORNER
- ⊞ WATER METER
- ⊙ SEWER CLEAN OUT
- ⊗ FIRE HYDRANT

CURVE TABLE				
CURVE	LENGTH	RADIUS	CHORD BEARING	CHORD
C23	61.10'	305.00'	S45°03'25"W	61.00'

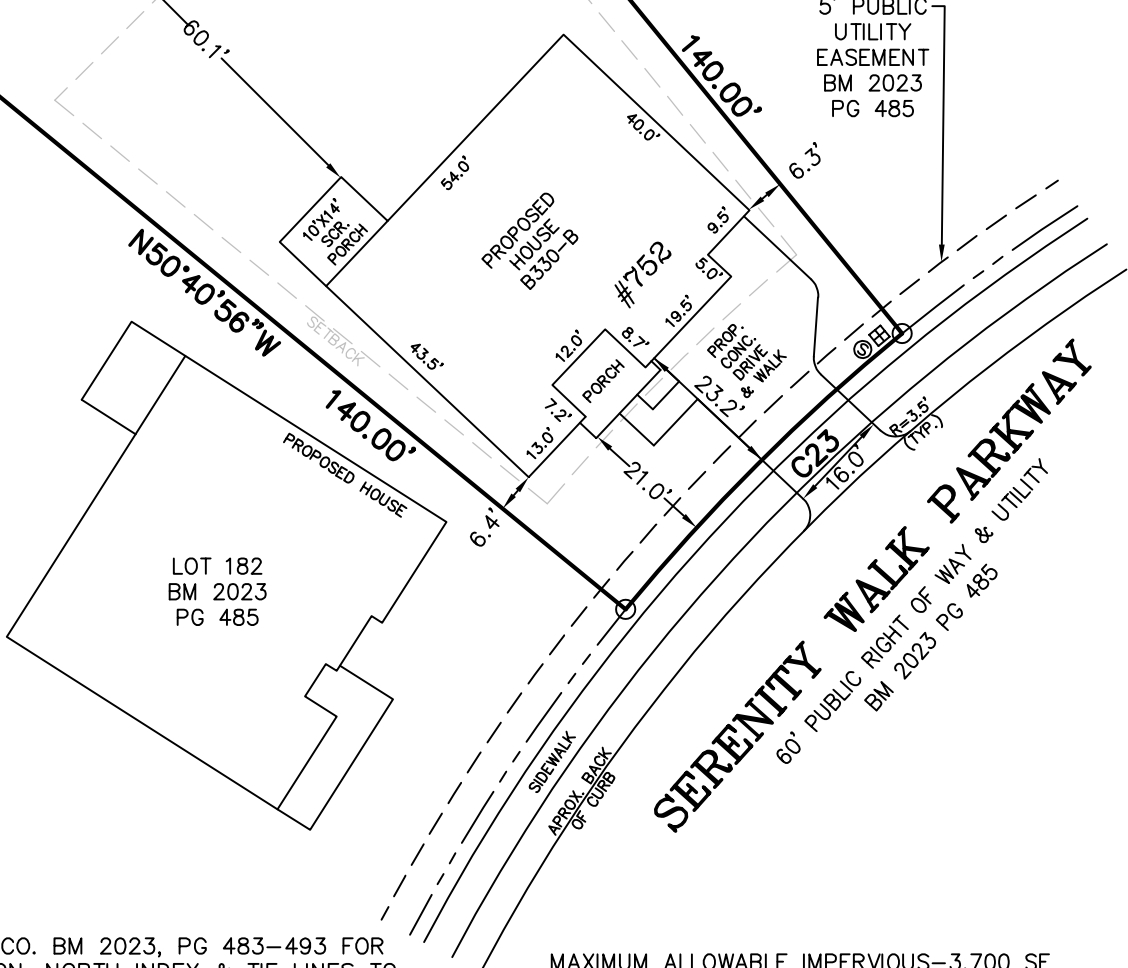
VICINITY MAP (NTS)

N/F GREENFIELD
 SERENITY DEVCO LLC
 SERENITY
 DB 3952 PG 789
 BM 2021 PG 21-26
 BM 2022 PG 45-50

LOT 180
 BM 2023
 PG 485

LOT 181
 10,385 SF

5' PUBLIC
 UTILITY
 EASEMENT
 BM 2023
 PG 485



NOTES:

- REFERENCE HARNETT CO. BM 2023, PG 483-493 FOR BOUNDARY INFORMATION, NORTH INDEX & TIE LINES TO SUBDIVISION CONTROL CORNERS.
- ZONED: RA-30, RA-40, & CONSERVATION.
- SETBACKS, PER BM 2023 PG 483:
 - >43' LOT WIDTH:
 - FRONT YARD-20', SIDE YARD-5', REAR YARD-20', CORNER YARD-12'.
- PROPERTY IS NOT LOCATED WITHIN A SPECIAL FLOOD HAZARD AREA AS SCALED FROM THE NFIP FIRM No. 3720065500L (EFFECTIVE DATE: JULY 19, 2022) AND/OR 3720064500J (EFFECTIVE DATE: 10/3/2006), AND/OR 3720064400J (EFFECTIVE DATE: 10/3/2006).

MAXIMUM ALLOWABLE IMPERVIOUS-3,700 SF

TOTAL ESTIMATED IMPERVIOUS-3,161 SF	
SITE	SQ. FT.
HOUSE	2,394
DRIVEWAY	565
LEAD WALK	53
COV. PORCH	140
PAD	0
A/C PAD	9

PERMIT PLAN LOT: 181

SERENITY SUBDIVISION, PHASE 2C
 HECTORS CREEK TOWNSHIP, HARNETT COUNTY, NC

SURVEYED FOR
DAVID WEEKLEY HOMES
 1901 N. HARRISON AVENUE, SUITE 200
 CARY, NC 27513

I HEREBY CERTIFY THAT THE BUILDING WILL LIE WHOLLY ON THE LOT. THIS PLAT IS OF AN EXISTING PARCEL OF LAND. THIS IS NOT A SURVEY AND NOT FOR RECORDATION PURPOSES.



MSS LAND CONSULTANTS, PC
 "Committed to Total Quality Service"
 Firm License: C-2070
 E S T. 1 9 9 8

6118 St. Giles St Phone (919) 510-4464
 (Suite E) Fax (919) 510-9102
 Raleigh, NC 27612 Email: gowersw@mssland.com

PRELIMINARY PLAN

WADE A. GOWERS, PLS L-4639