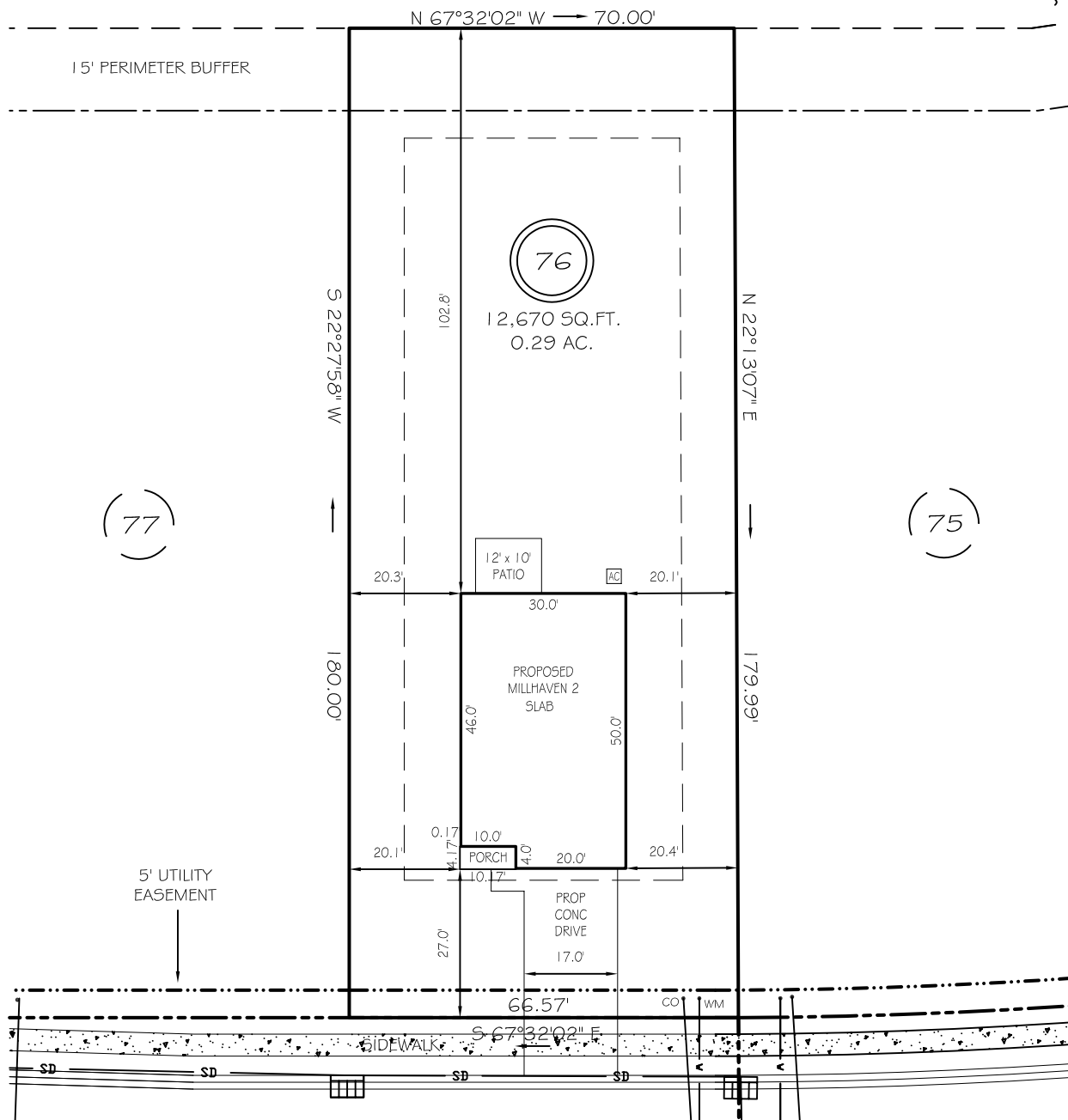


I, MICHAEL P. GRIFFIN, certify that under my direction and supervision this map was drawn from an actual field survey; that the error of closure of the survey as calculated by coordinates is 1: 10,000+; that the area shown hereon was calculated by coordinates.

Witness my hand and seal this day of MONTH 2024.

N/F  
 TRAVIS SCOTT WESTER  
 PB 2011, PG 589  
 DB 2927, PG 541

BK 2022 FCS 203-205  
 HARNETT CO. REGISTRY



WINDING CREEK DRIVE

50' PUBLIC RW & UTILITY EASEMENT

SETBACKS

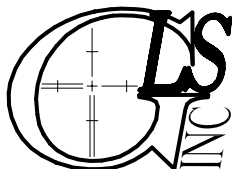
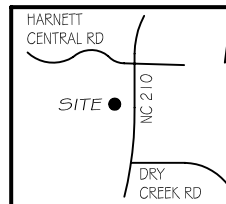
FRONT	25'
REAR	20'
SIDE	10'
CORNER SIDE	20'

CI R=975.00' L=4.21' N67°39'28"W 4.21'

**PRELIMINARY**  
 NOT FOR RECORDATION,  
 SALES OR CONVEYANCE

LEGEND

EIP	EXISTING IRON PIPE	FES	FLARED END SECTION
IPS	IRON PIPE SET	WM	WATER METER
R/W	RIGHT OF WAY	CO	CLEAN OUT
N/F	NOW OR FORMERLY	FH	FIRE HYDRANT
EIS	EXISTING IRON STAKE	CB	CATCH BASIN



GRIFFIN LAND SURVEYING, INC.

P. O. BOX 148  
 FUQUAY-VARINA, NC 27526  
 (919) - 567-1963

**PLOT PLAN**  
 FOR  
**DRB HOMES**  
 THE FARM AT  
 NEILLS CREEK  
 LOT 76

WINDING CREEK DRIVE  
 NORTH CAROLINA

HARNETT COUNTY NEILL'S CREEK TWSHP

DRAWN BY KDF

DATE 7/1/24

CHECKED BY MPG

SCALE 1" = 30'