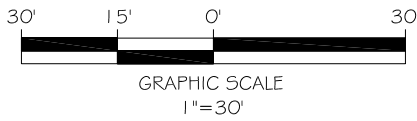


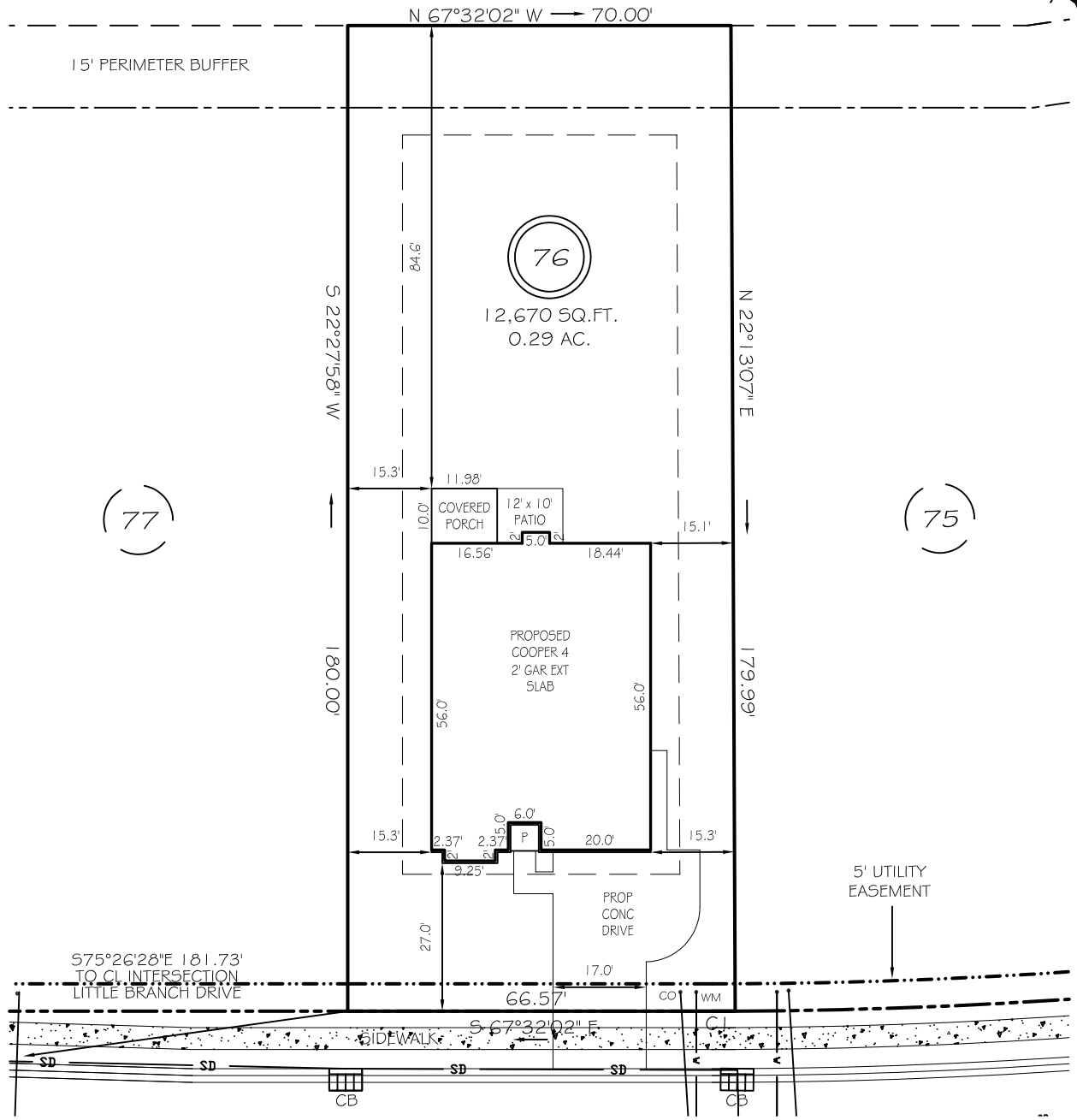
I, MICHAEL P. GRIFFIN, certify that under my direction and supervision this map was drawn from an actual field survey; that the error of closure of the survey as calculated by coordinates is 1: 10,000+; that the area shown hereon was calculated by coordinates. Dashed lines shown hereon were not surveyed.

Witness my hand and seal this day of MONTH 2024.



BK 2022 FCS 203-205
HARNETT CO. REGISTRY

N/F
TRAVIS SCOTT WESTER
PB 2011, PG 589
DB 2927, PG 541



WINDING CREEK DRIVE
50' PUBLIC RW & UTILITY EASEMENT

SETBACKS

FRONT	25'
REAR	20'
SIDE	10'
CORNER SIDE	20'

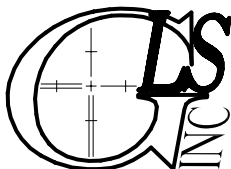
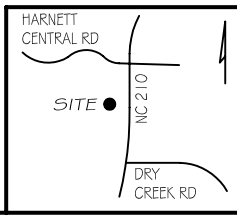
REVISION: NEW PLANS 9/10/24

CI R=975.00' L=4.21' N67°39'28"W 4.21'

LEGEND

P R E L I M I N A R Y
NOT FOR RECORDATION,
SALES OR CONVEYANCE

EIP	EXISTING IRON PIPE	FES	FLARED END SECTION
IPS	IRON PIPE SET	WM	WATER METER
R/W	RIGHT OF WAY	CO	CLEAN OUT
N/F	NOW OR FORMERLY	FH	FIRE HYDRANT
EIS	EXISTING IRON STAKE	CB	CATCH BASIN



GRIFFIN LAND SURVEYING, INC.

P. O. BOX 148
FUQUAY-VARINA, NC 27526
(919) - 567 - 1963

FIRM LIC.# C-1345

PLOT PLAN
FOR
DRB HOMES
THE FARM AT
NEILLS CREEK
LOT 76

WINDING CREEK DRIVE
NORTH CAROLINA

HARNETT COUNTY NEILL'S CREEK TWSHP

DRAWN BY KDF

DATE 7/1/24

CHECKED BY MPG

SCALE 1" = 30'