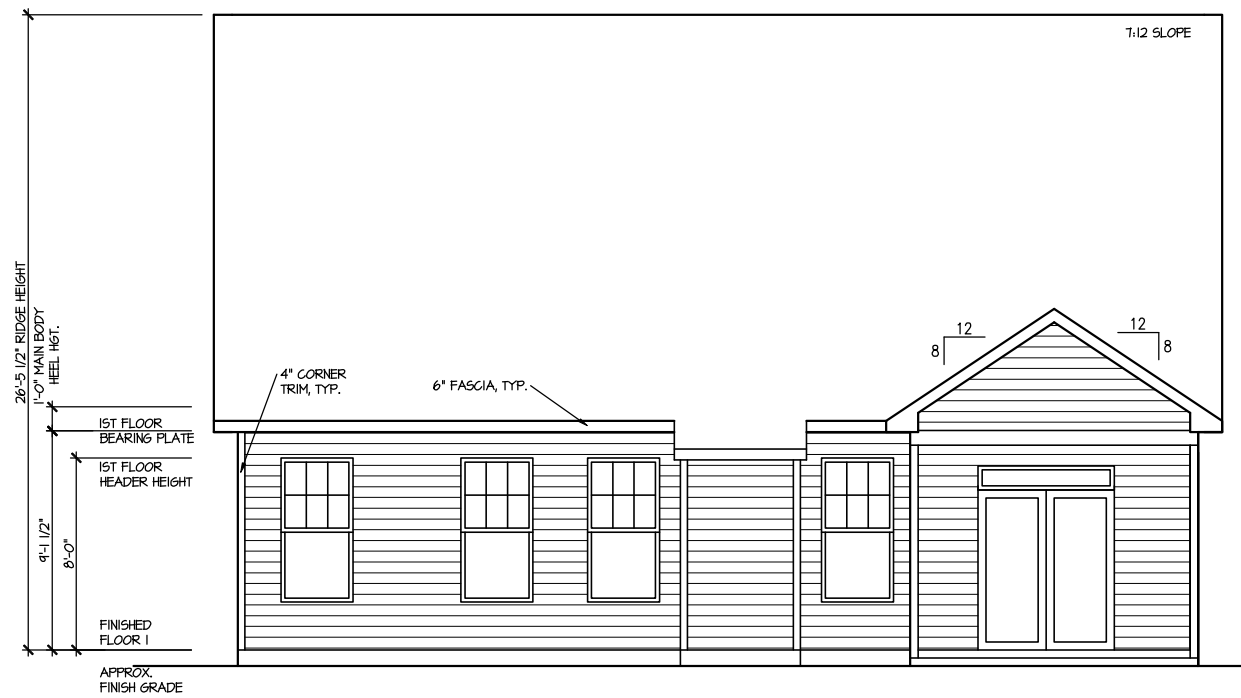


NOTE:
TYPICAL FRONT DOOR SHOWN
REFER TO DIVISION SPECS

NOTE:
TYPICAL WINDOW GRIDS SHOWN
REFER TO DIVISION SPECS

FRONT ELEVATION 4

SCALE: 1/8" = 1'-0"



REAR ELEVATION 4

SCALE: 1/8" = 1'-0"

FILE: Lot_00.0076.dwg DATE: 9/10/2024 9:52 AM

MASTER PLAN INFORMATION	
REVISION	DATE
4-RALE	02-24-2022
UPDATED DATE	01-16-2023

DRAWN BY:	ITS
DATE:	09/10/2024
PLAN NO.	1777



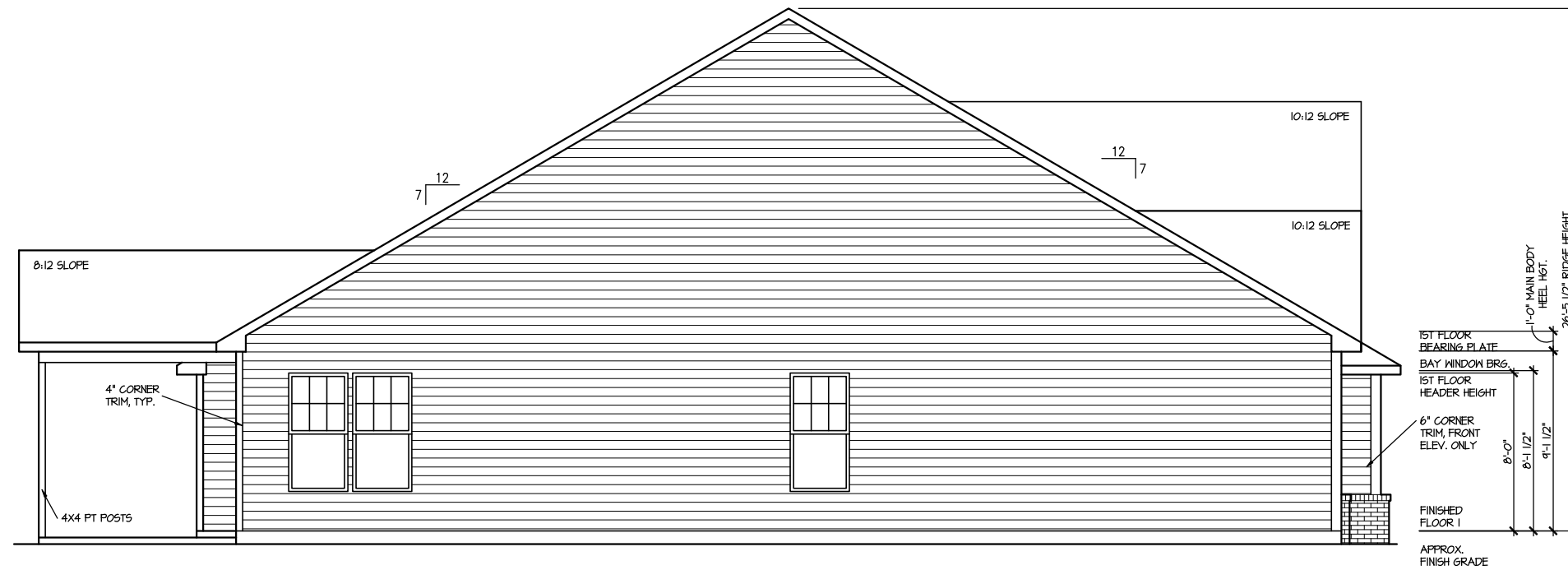
HOUSE NAME:
COOPER 3
DRAWING TITLE
FRONT & REAR ELEVATIONS

SHEET No.
A.1



RIGHT ELEVATION 4

SCALE: 1/8" = 1'-0"



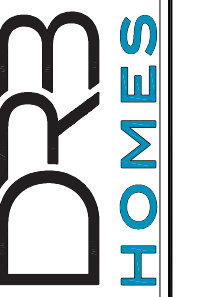
LEFT ELEVATION 4

SCALE: 1/8" = 1'-0"

UPDATED DATE
01-16-2023

MASTER PLAN INFORMATION
REVISION DATE
4-RALE 02-24-2022

DRAWN BY:
ITS
DATE:
09/10/2024
PLAN NO.
1777

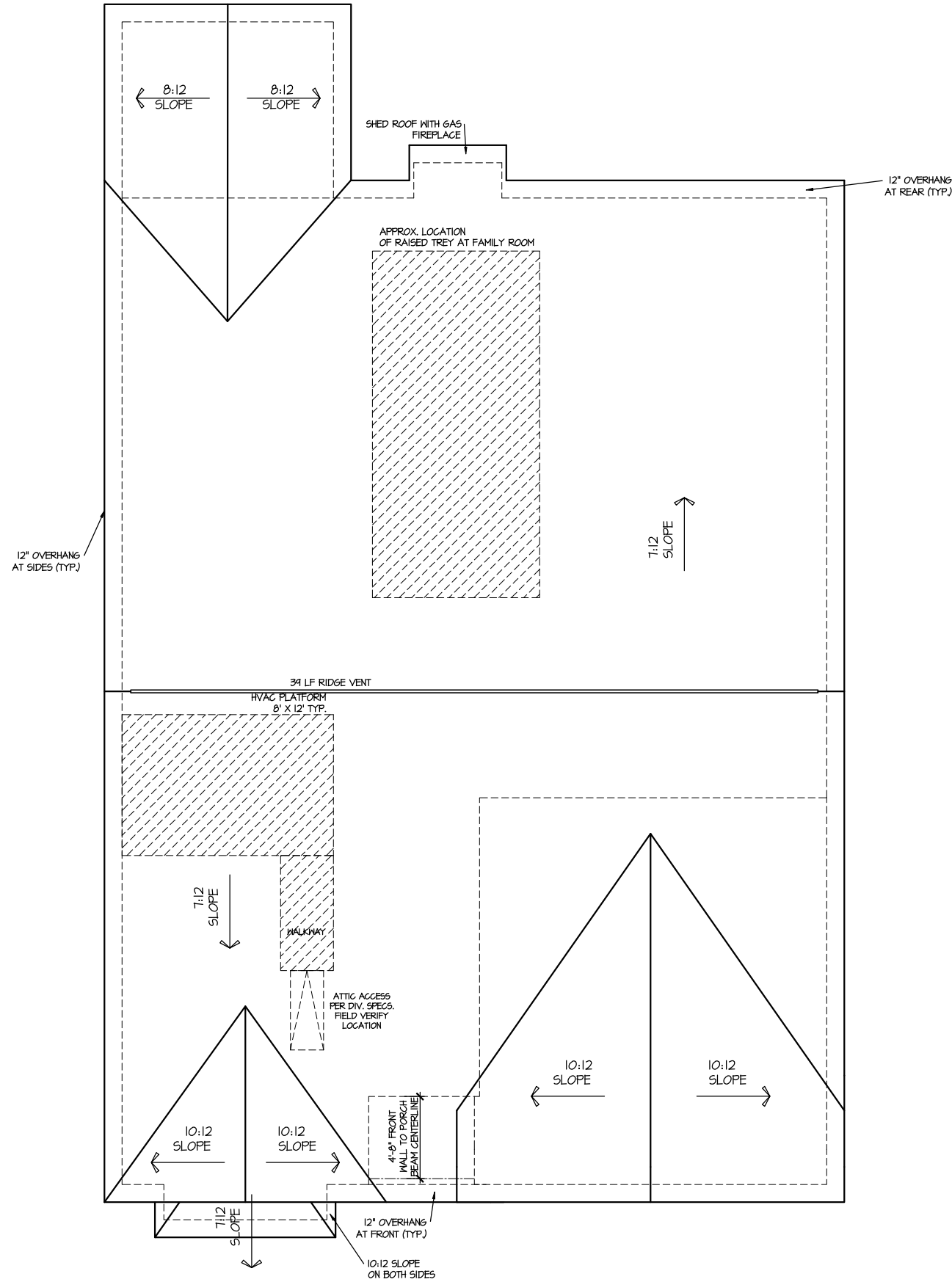


HOUSE NAME:
COOPER 3
DRAWING TITLE
RIGHT & LEFT ELEVATIONS

SHEET No.
A1.2

ROOF VENTILATION CALCULATIONS:

ROOF AREA = 2936 SQ. FT.
 OVERALL REQUIRED VENTILATION:
 1 TO 150 = 19.57 SQ. FT.
 1 TO 300 = 7.74 SQ. FT.
 50-80% IN TOP THIRD = 3.94 = 6.25 SQ. FT. (1 TO 300)
 NET FREE AREA OF VENTED SOFFIT = 5.1 SQ. IN. / LINEAR FT.
 NET FREE AREA OF RIDGE VENT = 18 SQ. IN. / LINEAR FT.
 LOWER VENTING (BOTTOM 2/3 ROOF)
 14 LINEAR FEET OF SOFFIT X 5.1 SQ. IN. = 2.43 SQ. FT.
 UPPER VENTING (TOP 1/3 ROOF)
 34 LINEAR FEET OF RIDGE X 18 SQ. IN. = 4.86 SQ. FT.
 4.86 SQ. FT. BETWEEN 50% - 80%
 (1 TO 300 ALLOWED)
 TOTAL ROOF VENTILATION: 1.81 SQ. FT. > 7.74 SQ. FT. (REQ'D)



ROOF PLAN ELEV. 4
 SCALE: 1/8" = 1'-0"

FILE: Lot_00.0076.dwg DATE: 9/10/2024 9:52 AM

MASTER PLAN INFORMATION		UPDATED DATE
REVISION	DATE	01-16-2023
4-RALE	02-24-2022	

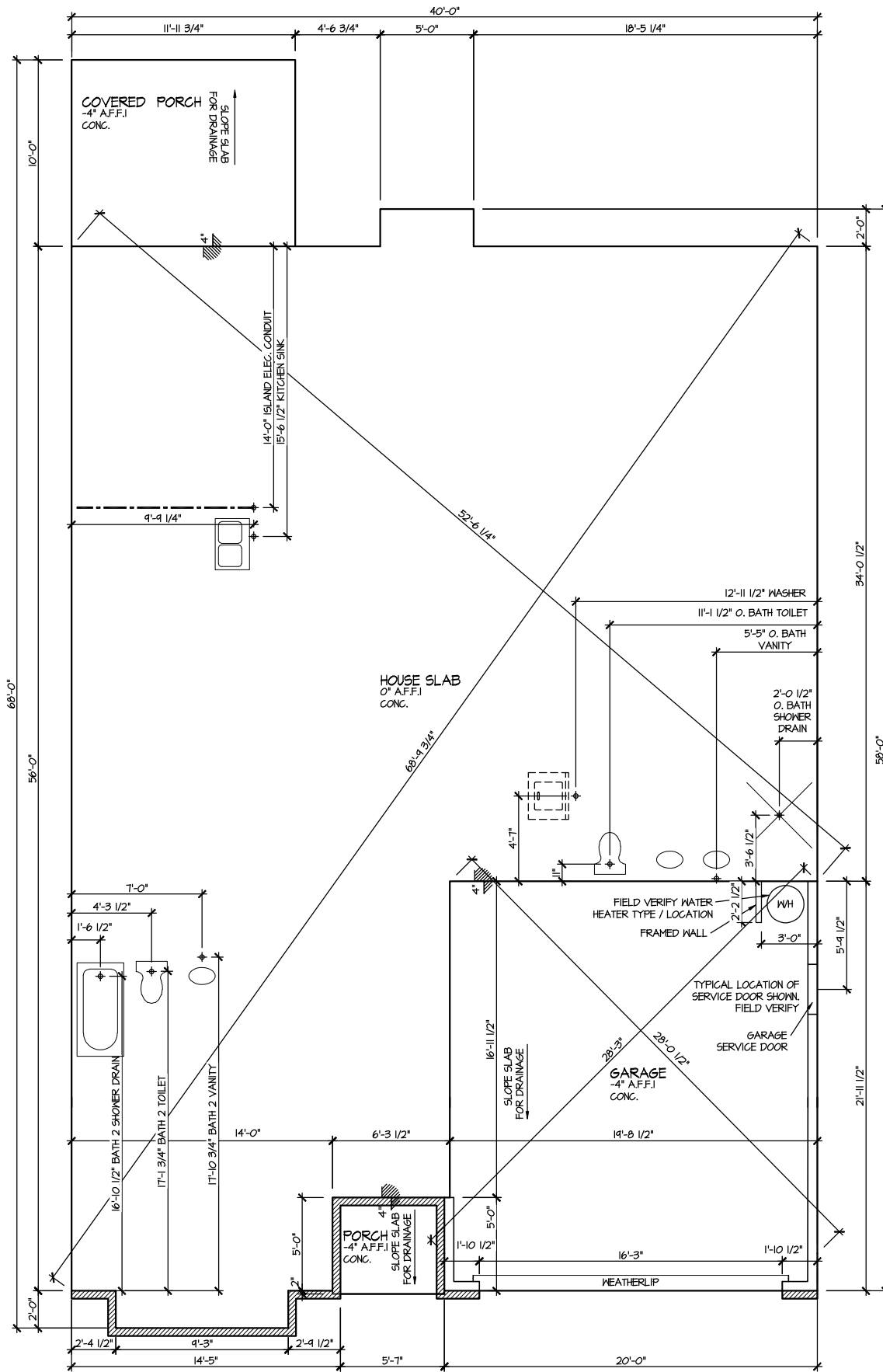
DRAWN BY:	ITS
DATE:	09/10/2024
PLAN NO.	1777



HOUSE NAME:
COOPER 3
 DRAWING TITLE
ROOF PLAN

SHEET No.
A.3

FILE: Lot_00.0076.dwg DATE: 9/10/2024 9:52 AM



ELEVATION 4
SLAB PLAN

SCALE: 1/8" = 1'-0"

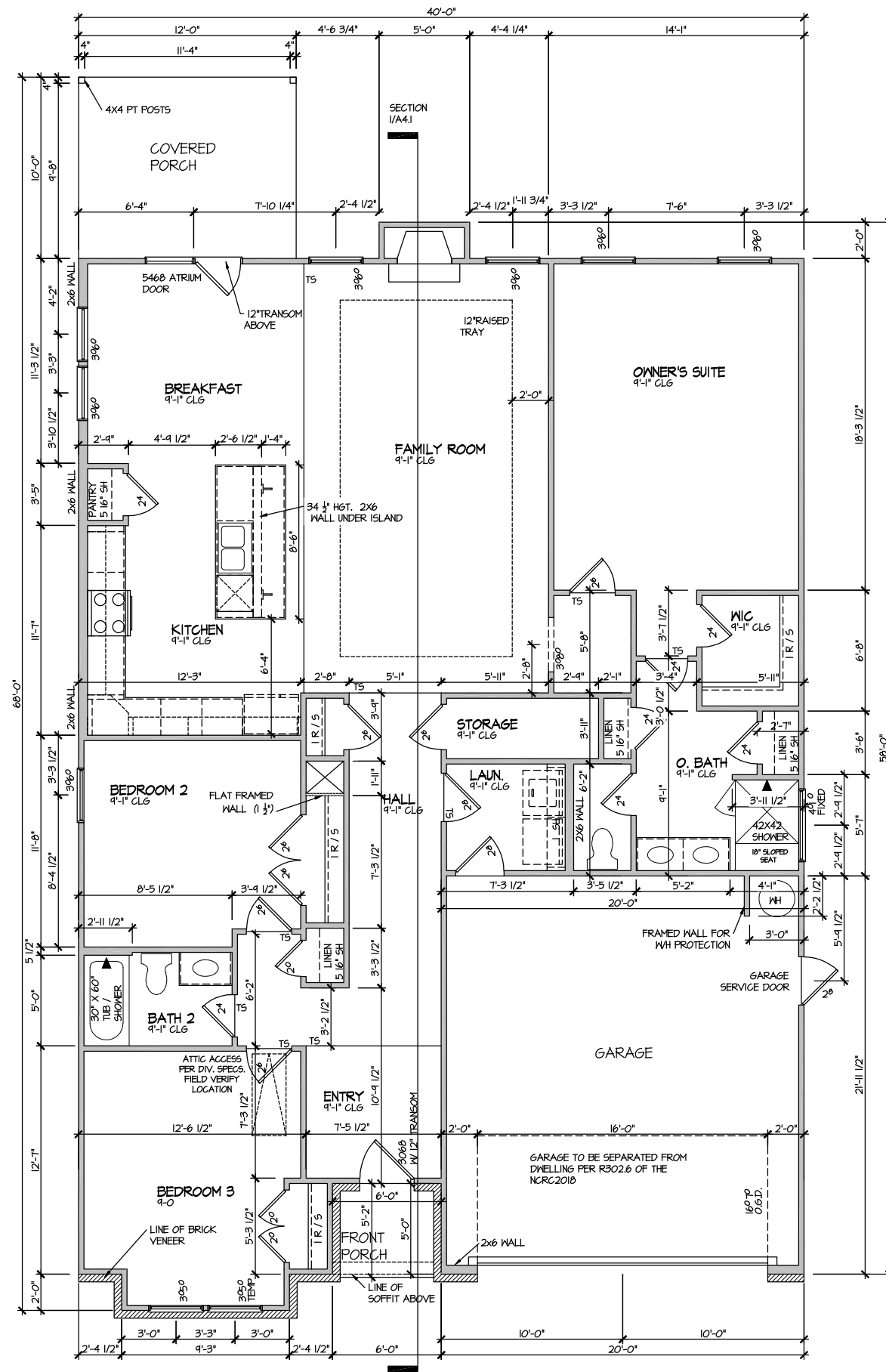
MASTER PLAN INFORMATION	
REVISION	DATE
4-RALE	02-24-2022
UPDATED DATE	01-16-2023

DRAWN BY:	ITS
DATE:	09/10/2024
PLAN NO.	1777



HOUSE NAME:
COOPER 3
DRAWING TITLE
SLAB PLAN

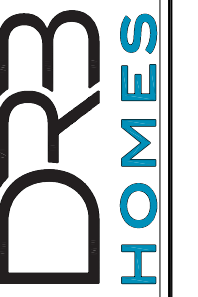
SHEET No.
A2.1



ELEVATION 4
 FIRST FLOOR PLAN
 SCALE: 1/8" = 1'-0"

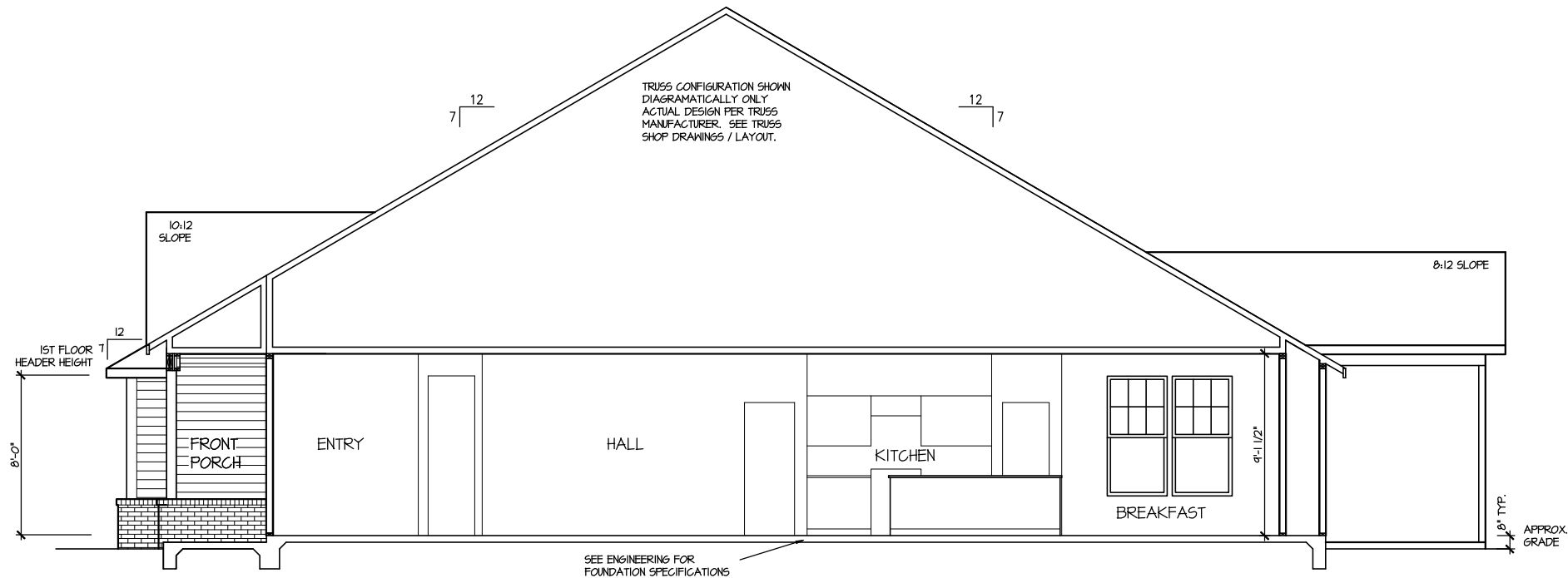
MASTER PLAN INFORMATION	
REVISION	DATE
4-RALE	02-24-2022
	UPDATED DATE
	01-16-2023

DRAWN BY:	ITS
DATE:	09/10/2024
PLAN NO.	1777



HOUSE NAME:
 COOPER 3
 DRAWING TITLE
 FIRST FLOOR PLAN

SHEET No.
 A3.1



SECTION I

SCALE: 1/8" = 1'-0"

FILE: Lot_00.0076.dwg DATE: 9/10/2024 9:52 AM

MASTER PLAN INFORMATION		UPDATED DATE
REVISION	DATE	01-16-2023
4-RALE	02-24-2022	

DRAWN BY:
ITS

DATE:
09/10/2024

PLAN NO.
1777



HOUSE NAME:
COOPER 3

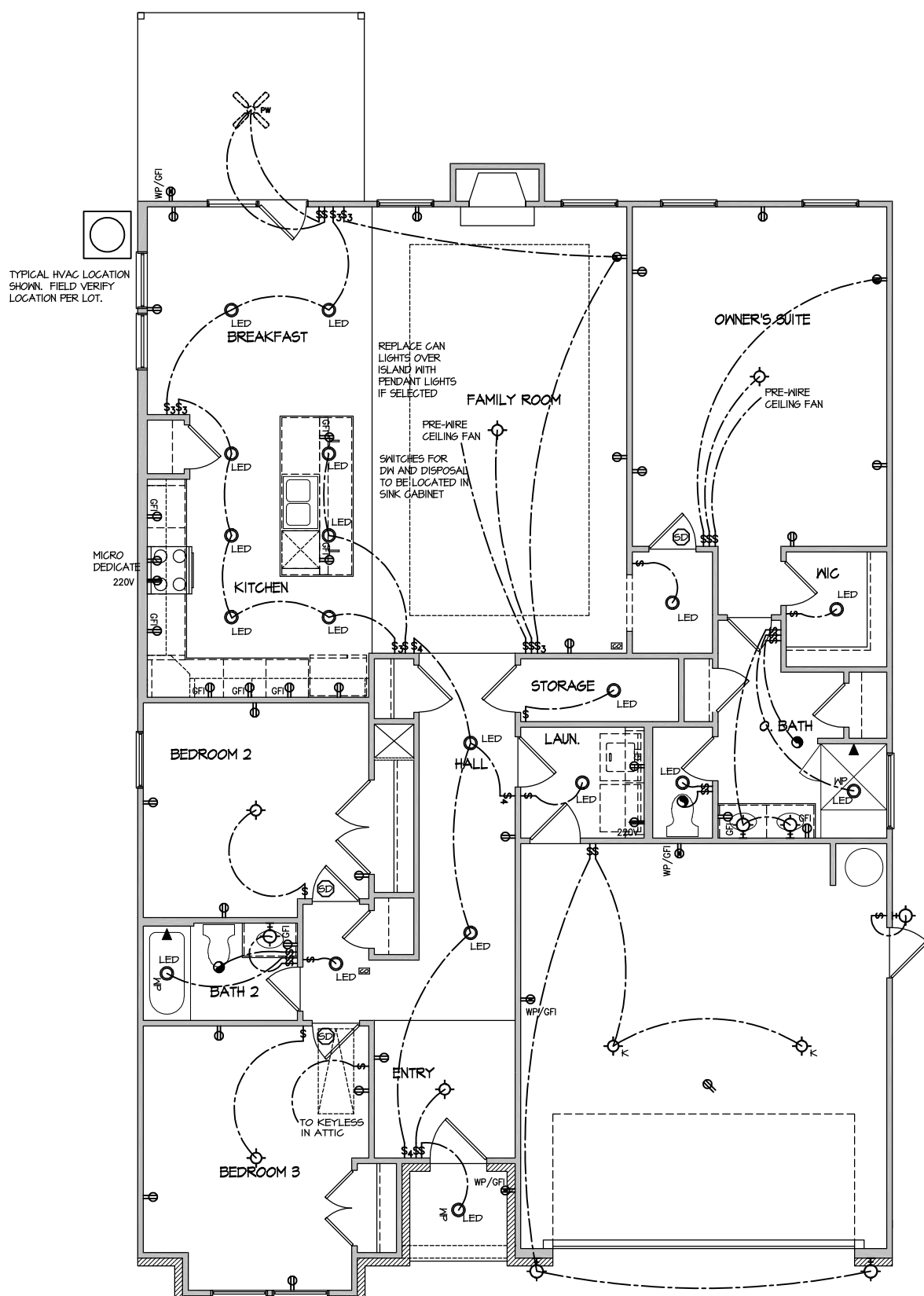
DRAWING TITLE
BUILDING SECTION

SHEET No.
A4.1

ELECTRICAL LEGEND

- ⊕ SINGLE POLE SWITCH
- ⊕₃ THREE WAY SWITCH
- ⊕₄ FOUR WAY SWITCH
- ⊕₂ DUPLEX AFCI RECEPTACLE
- ⊕₂ DUPLEX AFCI RECEPTACLE - BOTTOM HALF SWITCHED
- ⊕₂ DUPLEX AFCI RECEPTACLE - FLOOR MOUNTED
- ⊕₂ RECEPTACLE - 220V
- ⊕₂ GFI DUPLEX AFCI RECEPTACLE - GFI
- ⊕₂ WP/GFI DUPLEX AFCI RECEPTACLE - WATERPROOF GFI
- ⊕₂ SMOKE DETECTOR - WIRED IN SERIES
- ⊕₂ EXHAUST FAN MOTOR
- ⊕₂ CO DETECTOR
- ⊕₂ DOOR CHIME
- ⊕₂ LIGHT FIXTURE - WALL MOUNTED
- ⊕₂ LIGHT FIXTURE - CEILING MOUNTED
- ⊕₂ LED LIGHT FIXTURE - LED SURFACE MOUNTED
- ⊕₂ LED FULLCHAIN LAMPHOLDER
- ⊕₂ LED KEYLESS LAMPHOLDER

NOTE: ALL ELECTRICAL WORK SHALL CONFORM TO THE REQUIREMENTS OF THE ADOPTED VERSION OF THE NATIONAL ELECTRICAL CODE, THE LOCAL POWER COMPANY AND TO ALL APPLICABLE LOCAL REGULATIONS.



MASTER PLAN INFORMATION	
DATE	02-24-2022
REVISION	4-RALE
UPDATED DATE	01-16-2023

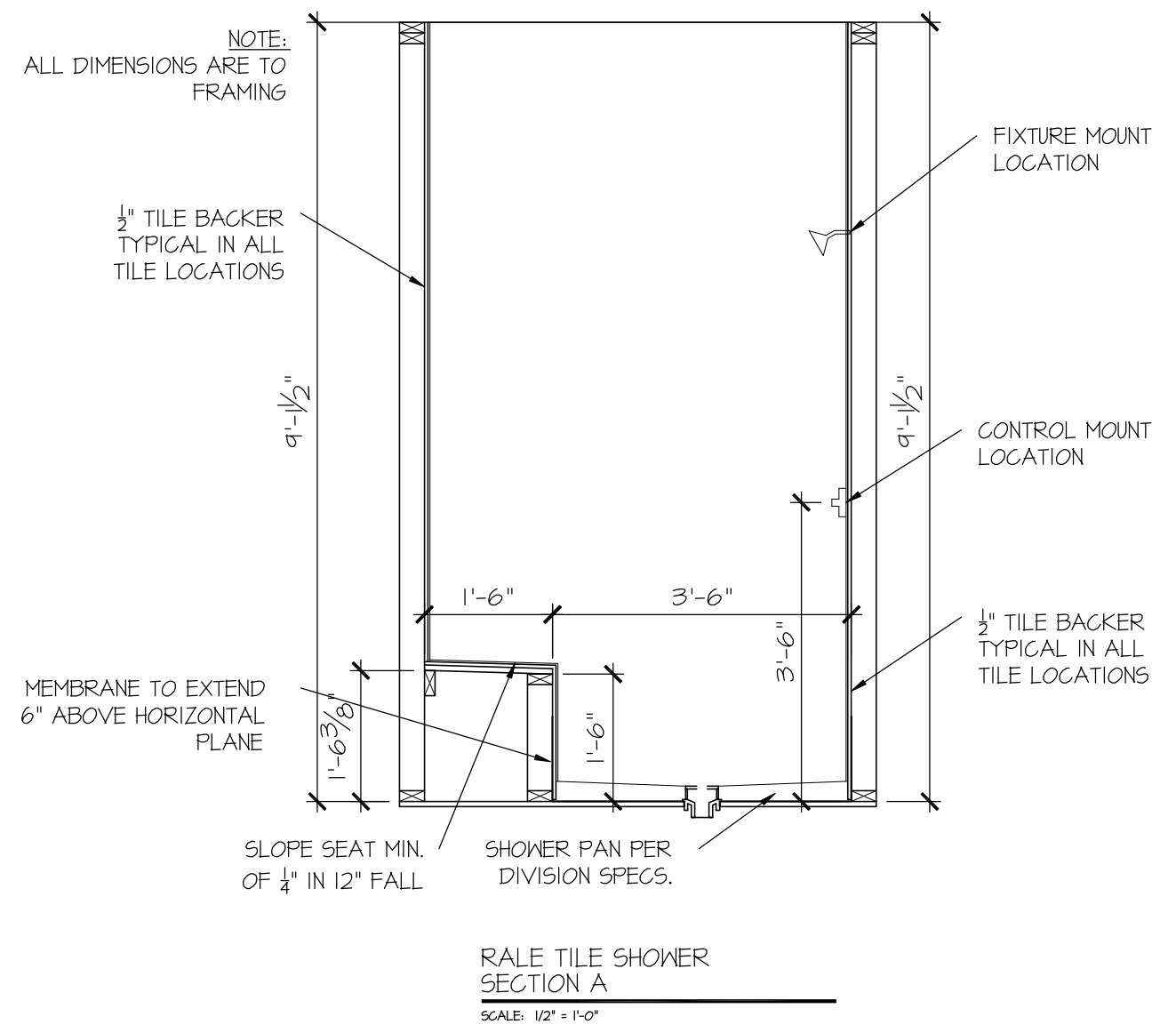
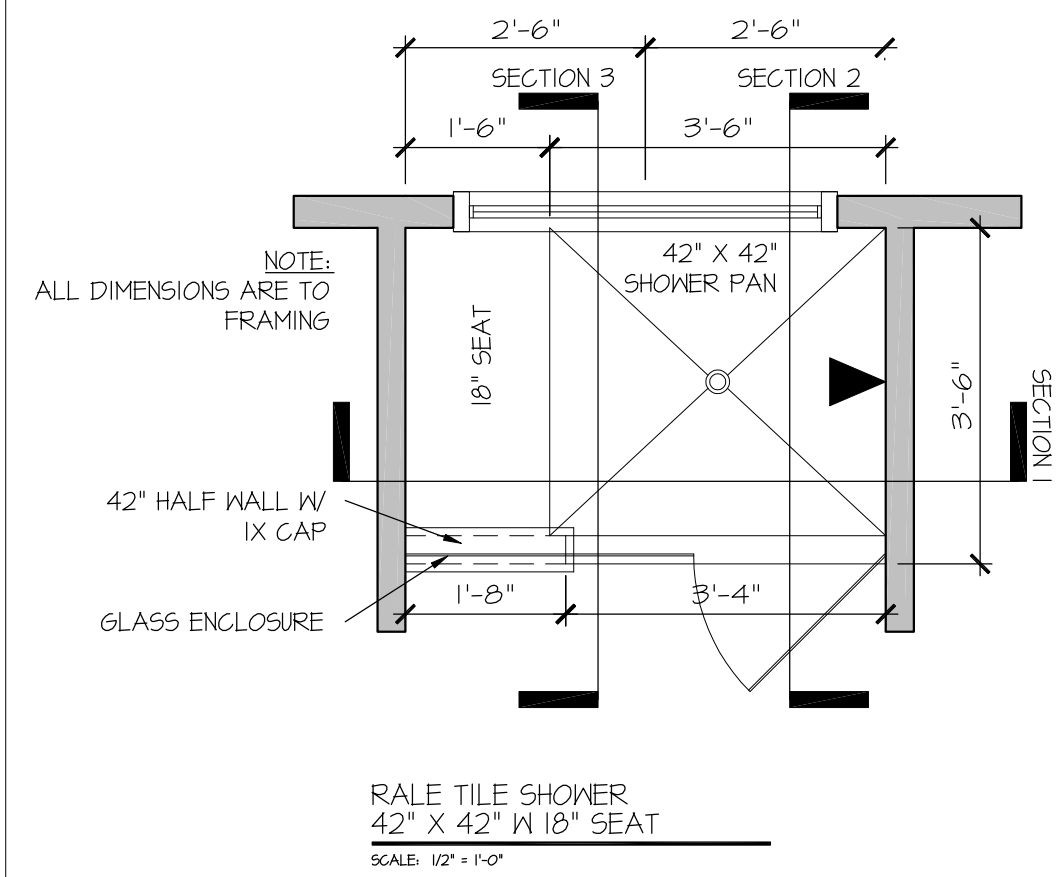
DRAWN BY:	ITS
DATE:	09/10/2024
PLAN NO.	1777



HOUSE NAME:
COOPER 3
DRAWING TITLE
FIRST FLOOR ELECTRICAL

SHEET No.
1

ELECTRICAL PLAN
FIRST FLOOR - ELEV. 4
SCALE: 1/8" = 1'-0"

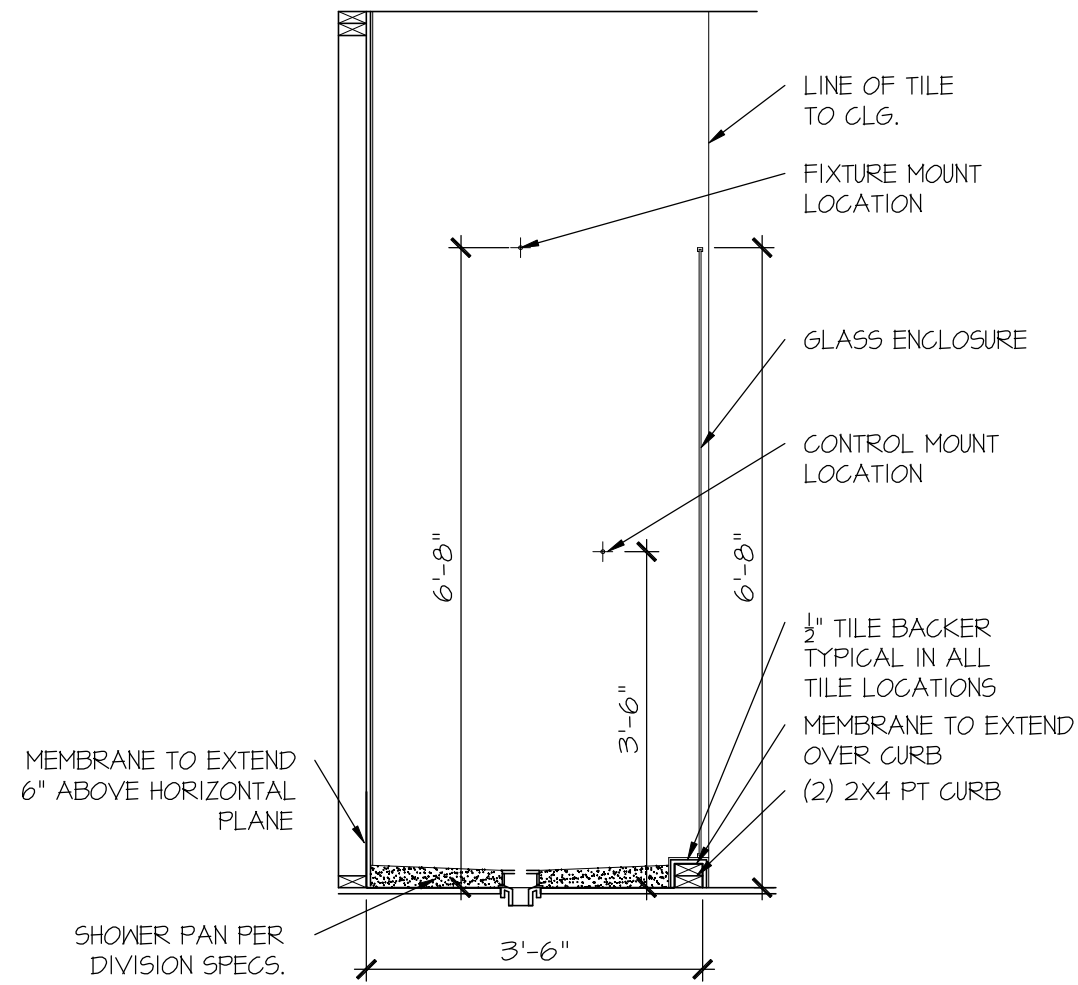


DRAWN BY:
L. BEAVERS
DATE: 9/1/22
PLAN NO.
11 X 17 SCALE
24 X 36 SCALE

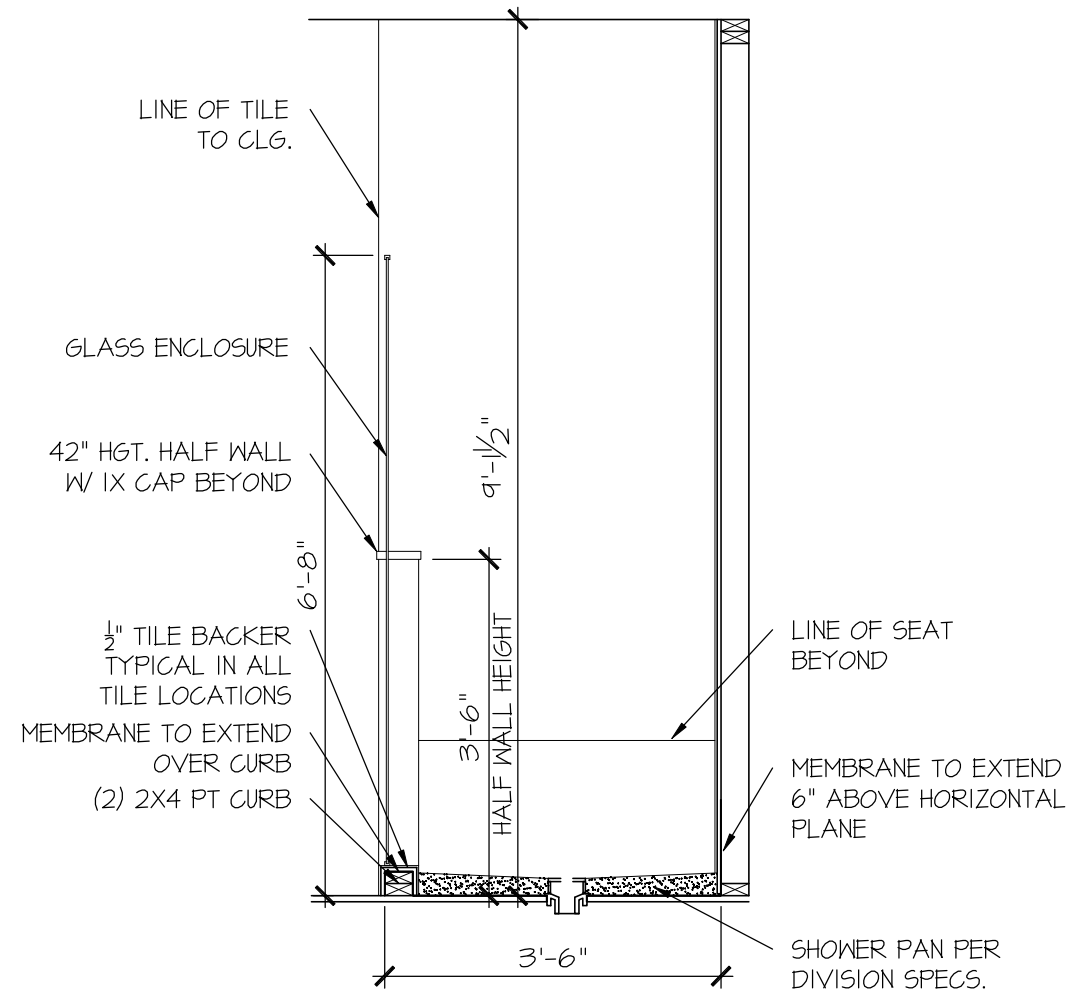


HOUSE NAME:
DRAWING TITLE
RALE TILE SHOWER DETAIL

SHEET No.
01.12

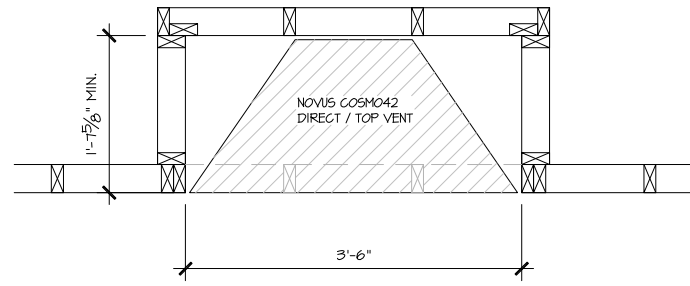


RALE TILE SHOWER SECTION B
SCALE: 1/2" = 1'-0"



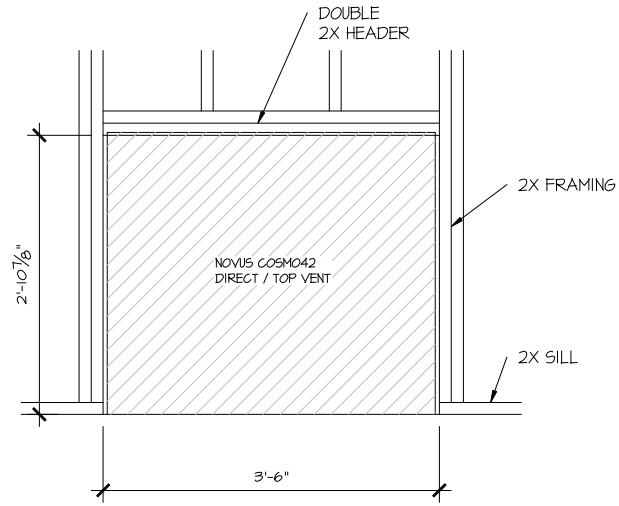
RALE TILE SHOWER SECTION C
SCALE: 1/2" = 1'-0"

ALL DIMENSIONS ARE TO FRAMING



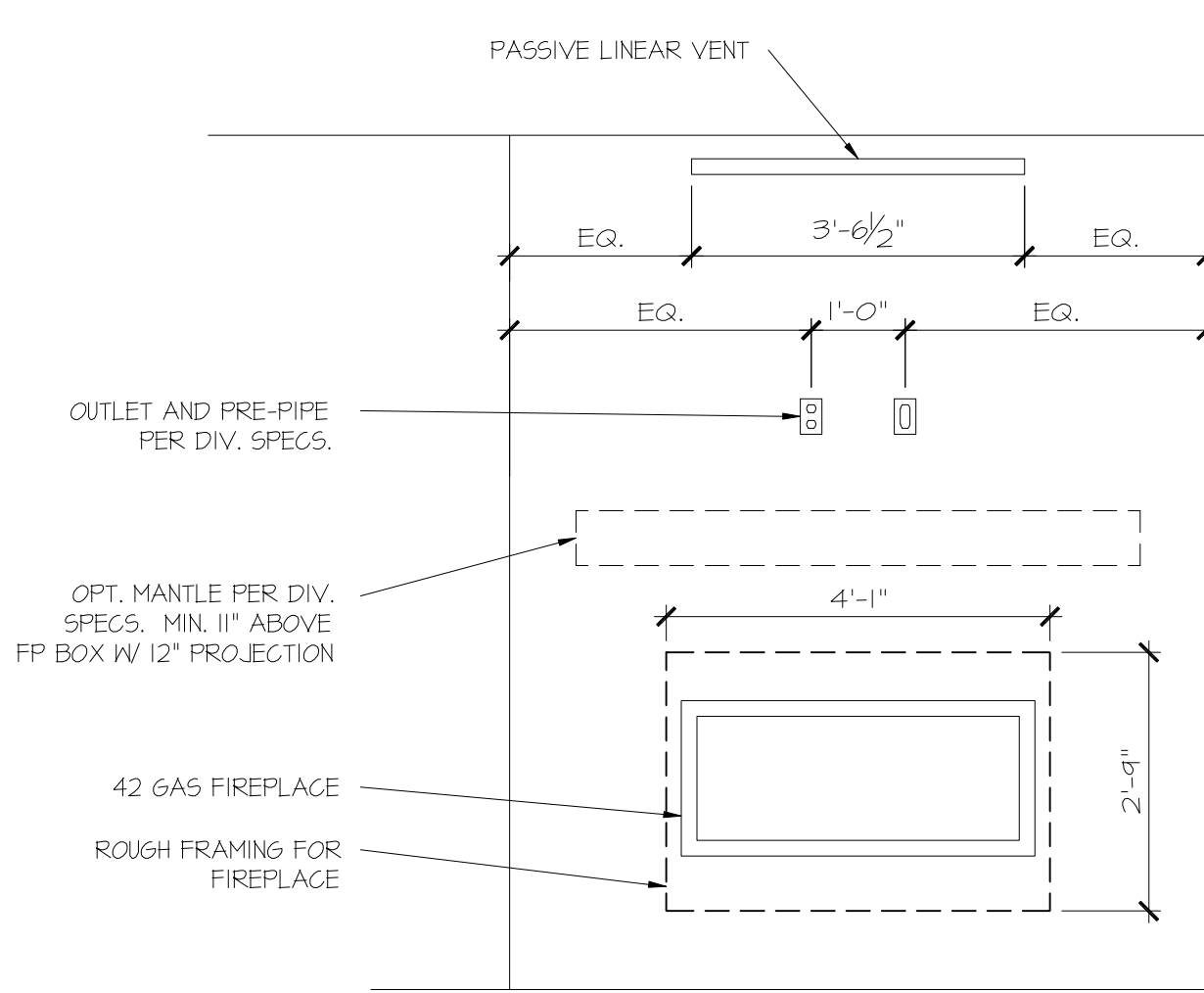
PARTIAL PLAN
NOVUS COSMO42

SCALE: 1/2" = 1'-0"



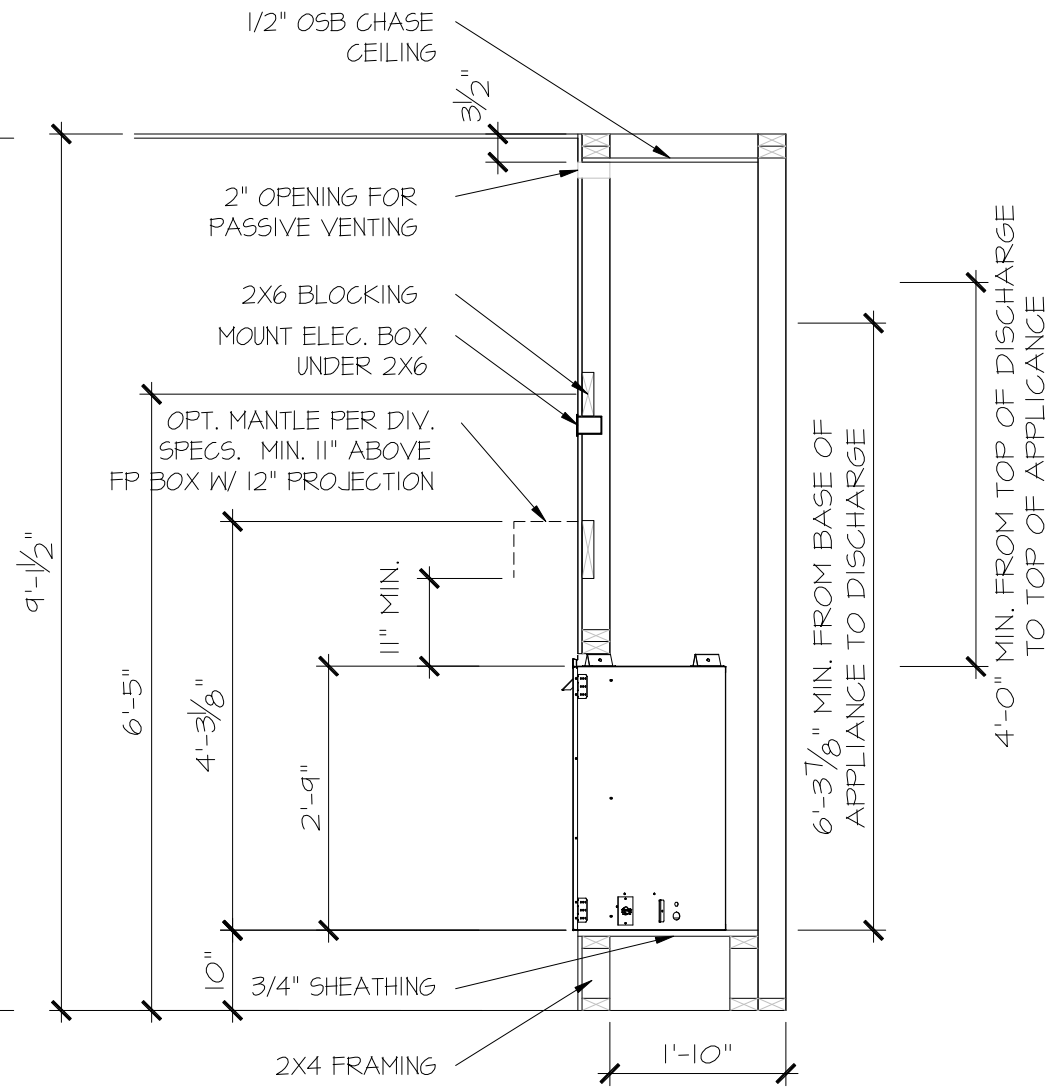
PARTIAL ELEVATION
NOVUS COSMO42

SCALE: 1/2" = 1'-0"



PARTIAL ELEVATION
NOVUS COSMO42

SCALE: 1/2" = 1'-0"



PARTIAL SECTION
NOVUS COSMO42

SCALE: 1/2" = 1'-0"

FILE: RALE FIREPLACE DETAILS 11-8-23.dwg DATE: 5/27/2022 10:35 AM

CONSULTANT LOGO

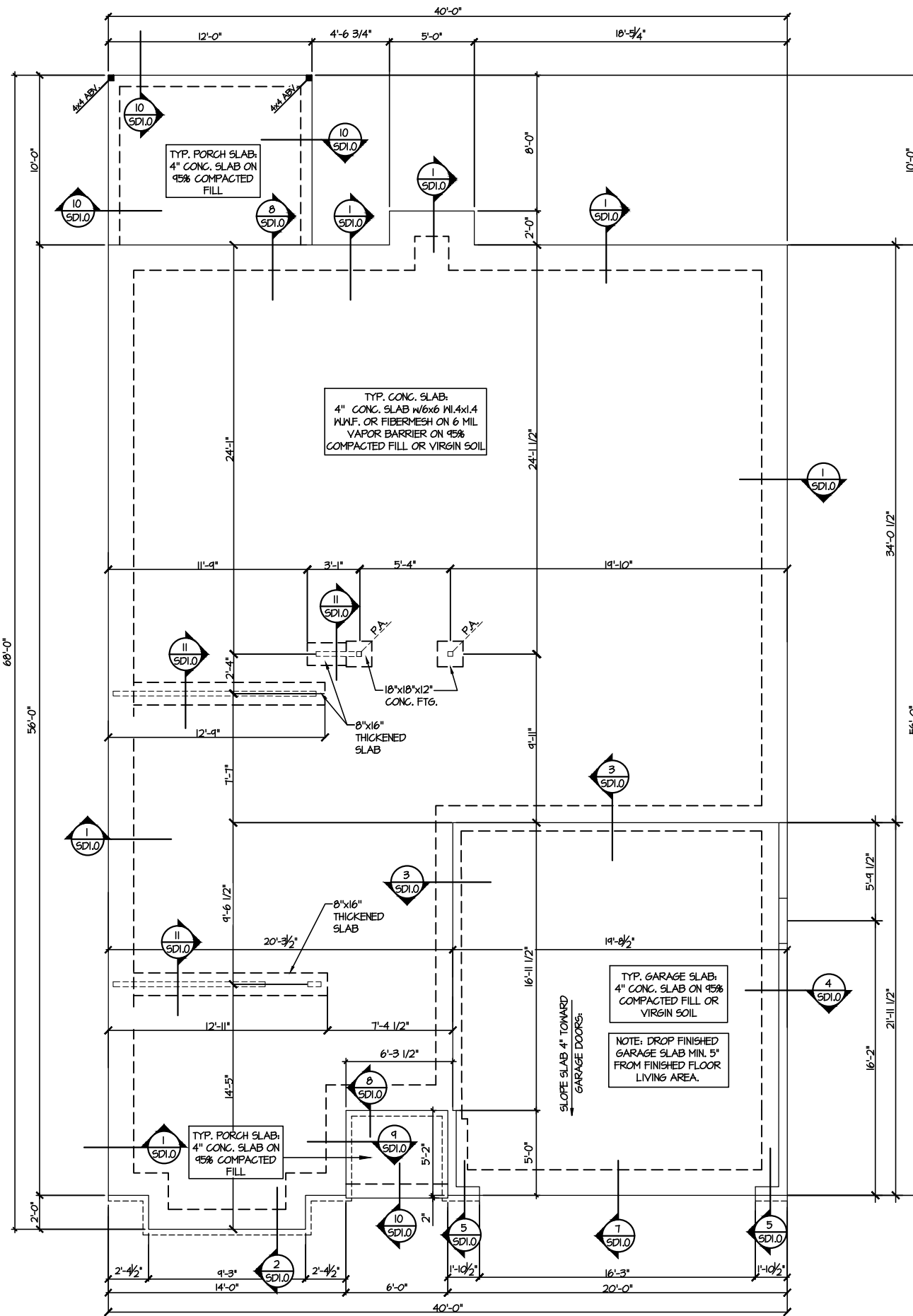
SEAL

DRAWN BY:
L. BEAVERS
DATE: 11-8-23
PLAN NO.
N/A
11 X 17 SCALE
24 X 36 SCALE



HOUSE NAME:
RALE FIREPLACE DETAILS
DRAWING TITLE
RALE FIREPLACE DETAIL
INTERIOR GAS UNITS

SHEET No.
10

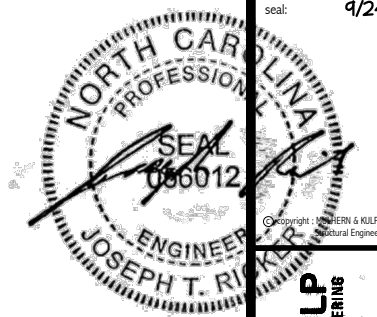


1 MONO SLAB FOUNDATION PLAN
SCALE: 1/8"=1'-0"

LEGEND

- [Symbol] INTERIOR BEARING WALL
- [Symbol] BEARING WALL ABOVE
- [Symbol] BEAM / HEADER
- [Symbol] INDICATES SHEAR WALL & EXTENT
- [Symbol] EXTENT OF OVERFRAMING
- JL METAL HANGER
- [Symbol] INDICATES POST ABOVE, PROVIDE SOLID BLOCKING UNDER POST OR JAMB ABOVE.
- [Symbol] INDICATES HOLD-DOWN OR STRAP. REFER TO SCHEDULE.

REFER TO SO.0 FOR TYPICAL STRUCTURAL NOTES & SCHEDULES



MULHERN+KULP
RESIDENTIAL STRUCTURAL ENGINEERING
300 Beardslee Ave. Building 4 - Asheville, PA 18002
P: 718-948-8881 • mulhernkulp.com
NC LIC. #C-3825

M&K project number:
126-22076

project mgr: JTR
drawn by: JAD
issue date: 07-09-24

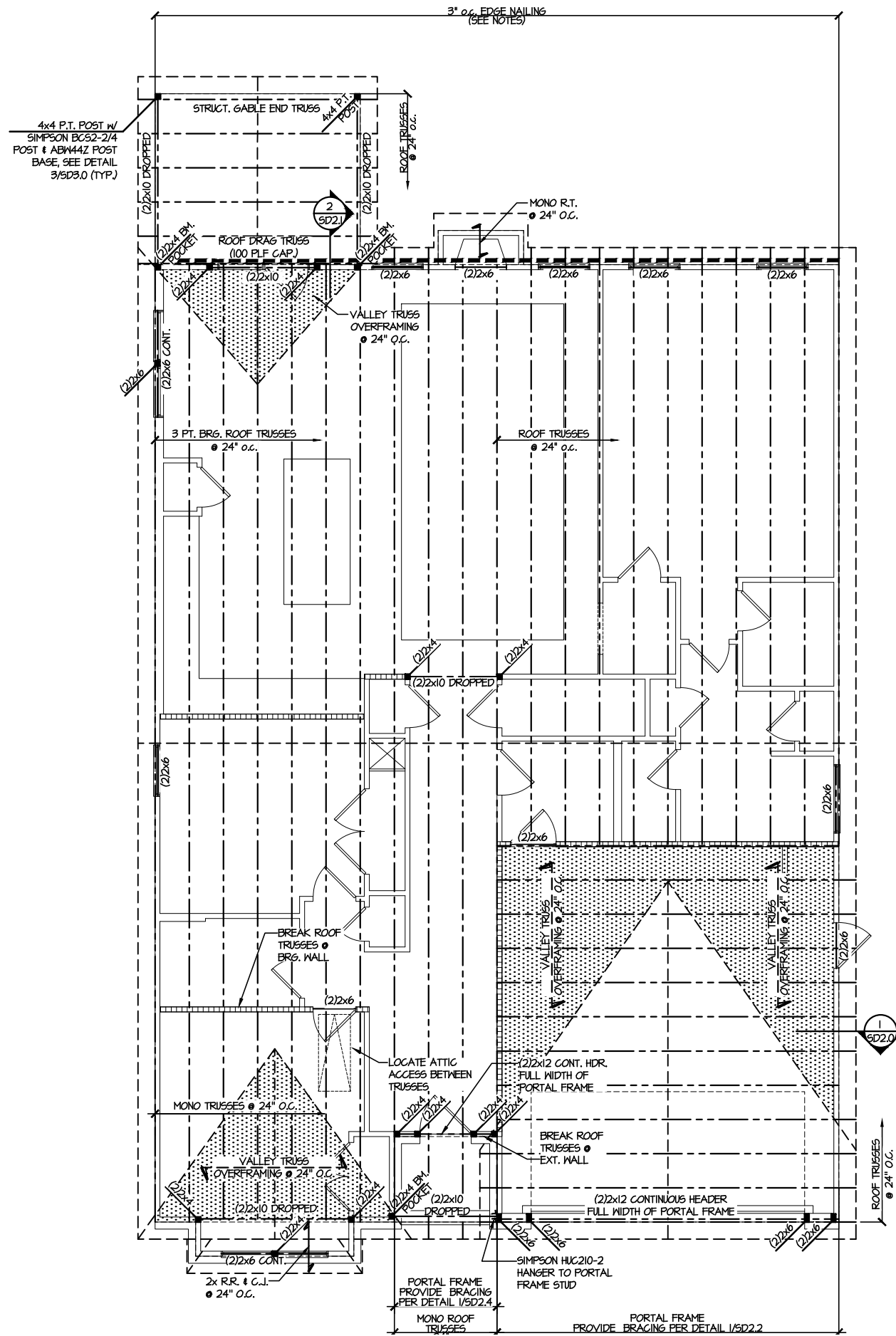
REVISIONS:
09-24-24 JAD



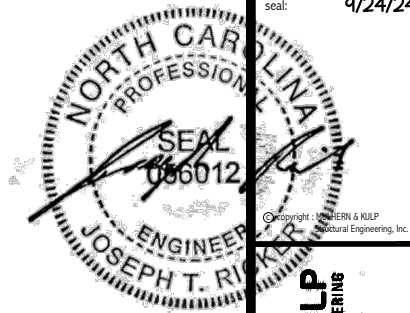
FOUNDATION PLANS
FARM AT NEIL'S CREEK
LOT 76 - COOPER 3 - ELEV. 4
RALEIGH, NC

sheet:
S1.0

FILE: RLH - Neil's Creek - Lot 76 - Structurals DATE: 9/24/2024 10:07 AM



1 ROOF FRAMING PLAN
SCALE: 1/8" = 1'-0"



9/24/24

MULHERN+KULP
RESIDENTIAL STRUCTURAL ENGINEERING
300 Riverside Ave., Building 4 - Asheville, PA 19002
P: 718-988-8881 • M: mulhern@mkulpe.com

M&K project number: 126-22076
project mgr: JTR
drawn by: JAD
issue date: 07-09-24

REVISIONS:
09-24-24 JAD



ROOF FRAMING PLANS
FARM AT NEIL'S CREEK
LOT 76 - COOPER 3 - ELEV. 4
RALEIGH, NC

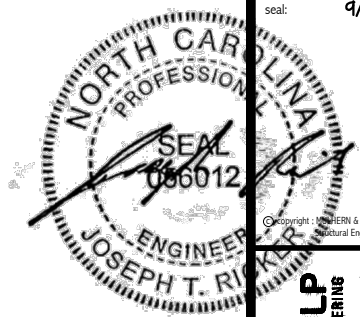
sheet: **S2.0**

LEGEND	
	INTERIOR BEARING WALL
	BEARING WALL ABOVE
	BEAM / HEADER
	INDICATES SHEAR WALL & EXTENT
	EXTENT OF OVERFRAMING
	JL METAL HANGER
	INDICATES POST ABOVE. PROVIDE SOLID BLOCKING UNDER POST OR JAMB ABOVE.
	INDICATES HOLD-DOWN OR STRAP. REFER TO SCHEDULE.

REFER TO SO.0 FOR TYPICAL STRUCTURAL NOTES & SCHEDULES

ENGINEERED BEAM MATERIAL SCHEDULE					
BEAM NUMBER	LVL OPTION	PSL OPTION	LSL OPTION	FLITCH OPTION	STEEL OPTION
001	(2)3/4"x11/8" - F	3/2"x11/8" - F	(3)3/4"x11/8" - F	(2)2x12 + (1) 3/4"x11/8" STEEL FLITCH PLATES - F	M2x4 - F
002	(3)3/4"x11/8" - F	3/2"x11/8" - F	(4)3/4"x11/8" - F	(2)2x12 + (1) 3/4"x11/8" STEEL FLITCH PLATES - F	M2x4 - F
003	(2)3/4"x11/8" - F	3/2"x11/8" - F	(3)3/4"x11/8" - F	(2)2x12 + (1) 3/4"x11/8" STEEL FLITCH PLATES - F	M2x4 - F
004	(2)3/4"x11 1/2" - D	3/2"x11 1/2" - D	(2)3/4"x11/8" - D	(2)2x10 + (1) 3/4"x11/8" STEEL FLITCH PLATES - D	M8x10 - D

BEAM NOTATION:
 - "F" INDICATES FLUSH BEAM
 - "FT" INDICATES FLUSH TOP BEAM
 - "FB" INDICATES FLUSH BOTTOM BEAM
 - "D" INDICATES DROPPED BEAM
 - "H" INDICATES DROPPED OPENING HEADER
 • REFER TO DETAIL D/S22.0 FOR TYPICAL FLITCH BEAM CONNECTIONS
 • REFER TO DETAIL E/S22.0 FOR TYPICAL STEEL BEAM CONNECTIONS
 • FOR FLUSH TOP BEAMS PROVIDE 2X STACKED PLATES BENEATH BEAM AS REQ'D. FASTEN PLATES IN SUCCESSION W/ (2) 3"x0.120" NAILS @ 8" O.C.
 • FOR FLUSH BOTTOM BEAMS PROVIDE 2X STACKED PLATES ATOP BEAM AS REQ'D. FASTEN PLATES IN SUCCESSION W/ (2) 3"x0.120" NAILS @ 8" O.C.



MULHERN+KULP
RESIDENTIAL STRUCTURAL ENGINEERING
3800 Bechtel Ave, Building 4 - Asheville, PA 18007
P: 717-258-8881
NC LIC. #C-3825

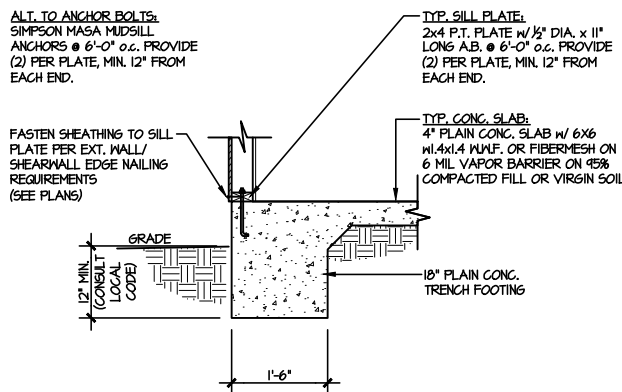
M&K project number:
126-22076
project mgr: JTR
drawn by: JAD
issue date: 07-09-24

REVISIONS:
09-24-24 JAD

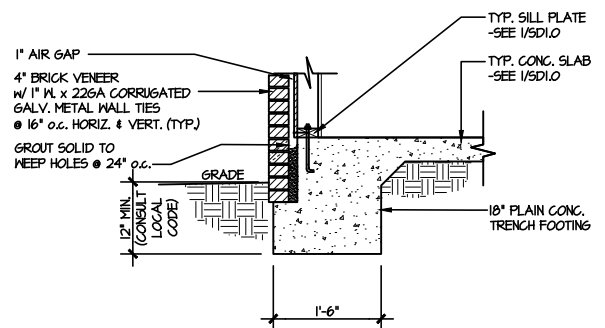


FOUNDATION DETAILS
FARM AT NEIL'S CREEK
LOT 76 - COOPER 3 - ELEV. 4
RALEIGH, NC

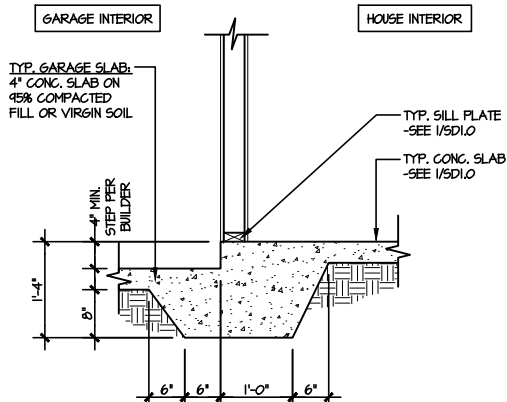
sheet:
SD1.0



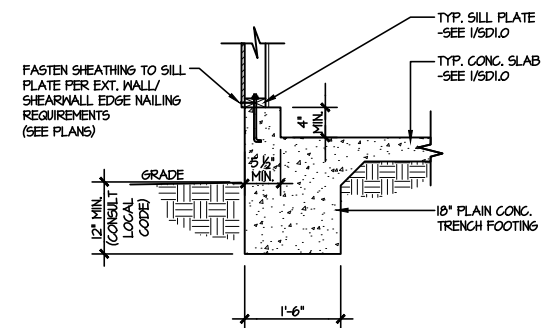
1 TYPICAL SLAB ON GRADE PERIMETER FOOTING
SCALE: 3/8"=1'-0"



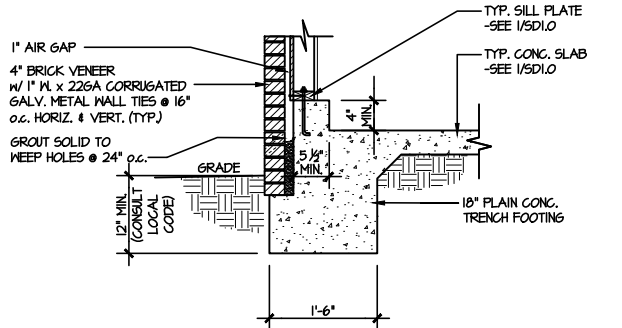
2 TYPICAL SLAB ON GRADE PERIMETER FOOTING w/ BRICK VENEER
SCALE: 3/8"=1'-0"



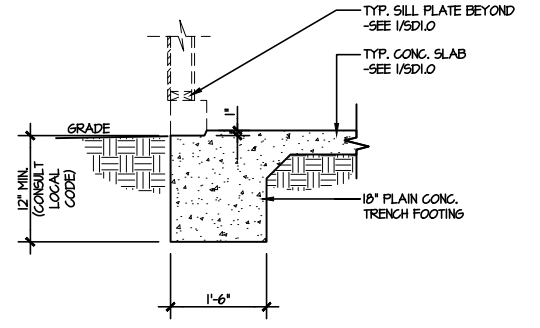
3 TYPICAL MONOLITHIC INTERIOR GARAGE FOOTING
SCALE: 3/8"=1'-0"



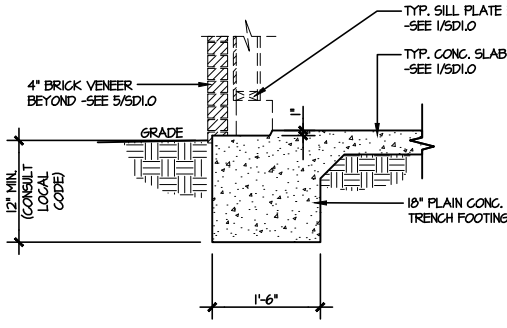
4 TYPICAL SLAB ON GRADE GARAGE PERIMETER FOOTING
SCALE: 3/8"=1'-0"



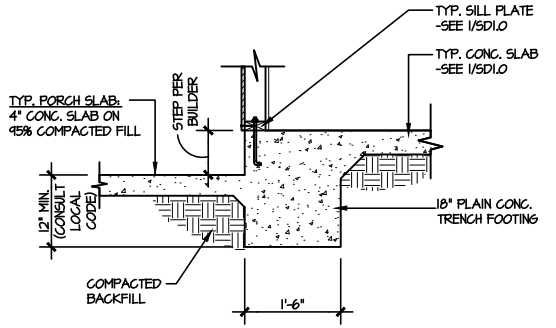
5 TYPICAL SLAB ON GRADE GARAGE PERIMETER FOOTING w/ BRICK VENEER
SCALE: 3/8"=1'-0"



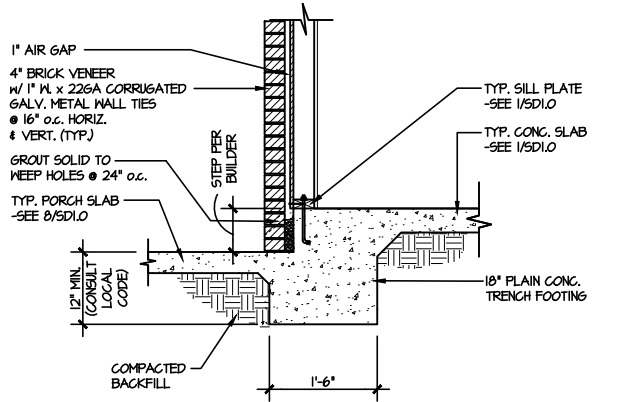
6 TYPICAL SLAB ON GRADE GARAGE ENTRY @ PERIMETER FOOTING
SCALE: 3/8"=1'-0"



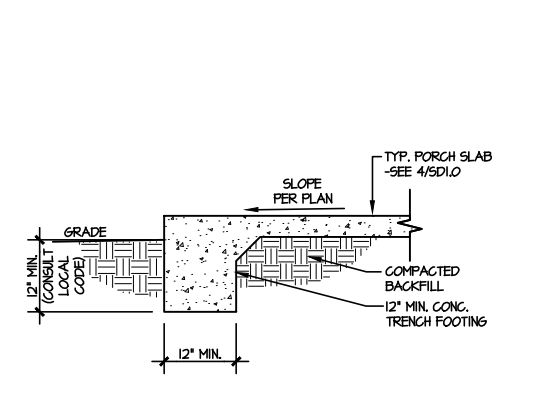
7 TYPICAL SLAB ON GRADE GARAGE ENTRY @ PERIMETER FOOTING w/ BRICK VENEER
SCALE: 3/8"=1'-0"



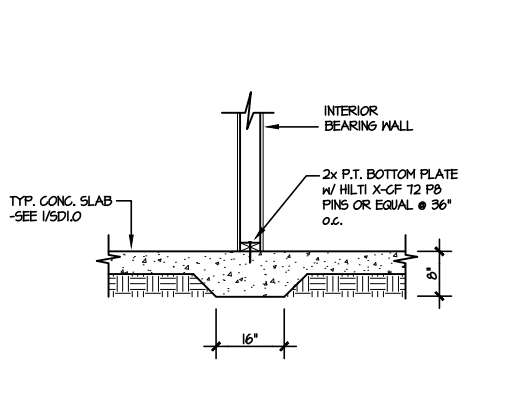
8 TYPICAL SLAB ON GRADE PERIMETER FOOTING @ PORCH/PATIO
SCALE: 3/8"=1'-0"



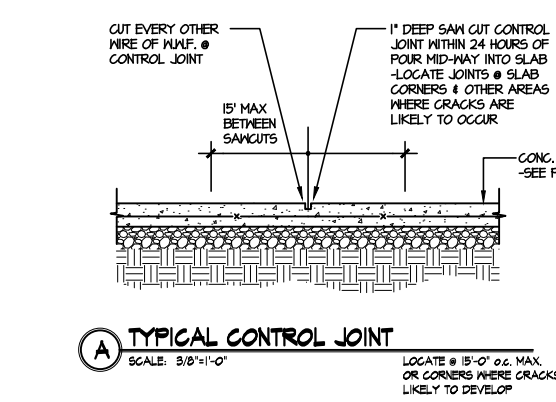
9 TYPICAL SLAB ON GRADE PERIMETER FOOTING @ PORCH/PATIO w/ BRICK VENEER
SCALE: 3/8"=1'-0"



10 TYPICAL FOOTING @ PORCH SLAB
SCALE: 3/8"=1'-0"



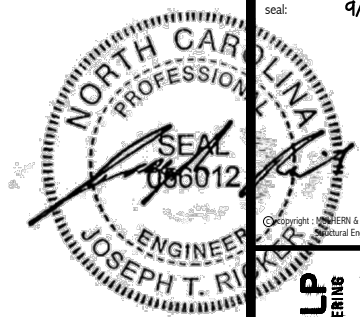
11 TYPICAL THICKENED SLAB @ INTERIOR BEARING WALL
SCALE: 3/8"=1'-0"



A TYPICAL CONTROL JOINT
SCALE: 3/8"=1'-0"
LOCATE @ 15'-0" o.c. MAX. OR CORNERS WHERE CRACKS LIKELY TO DEVELOP

LETTERED DETAILS ARE TYPICAL FOR THIS HOME & SHALL BE IMPLEMENTED IN ALL APPLICABLE AREAS. THESE DETAILS ARE NOT "CUT" ON THE PLANS.

NUMBERED DETAILS ARE PLAN SPECIFIC AND ARE ONLY REQUIRED WHERE SPECIFICALLY INDICATED ("CUT") ON THE PLANS.



MULHERN+KULP
RESIDENTIAL STRUCTURAL ENGINEERING
3800 Bechtel Ave, Building 4 - Asheville, PA 18007
P: 717-898-8881 F: 717-898-8882
N.C. LIC. #C-3825



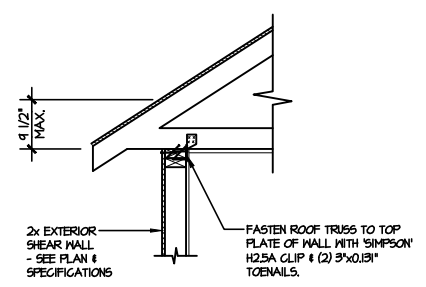
M&K project number:
126-22076
project mgr: JTR
drawn by: JAD
issue date: 07-09-24

REVISIONS:
09-24-24 JAD

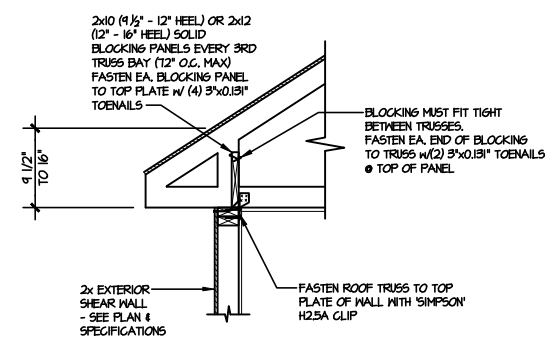
DRB
HOMES

FRAMING DETAILS
FARM AT NEIL'S CREEK
LOT 76 - COOPER 3 - ELEV. 4
RALEIGH, NC

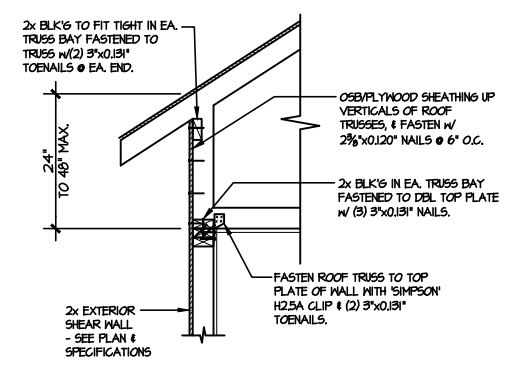
sheet:
SD2.0



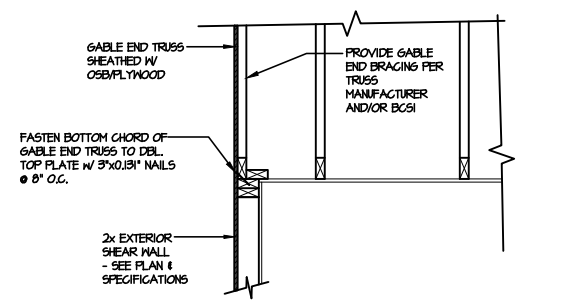
AI TYPICAL SHEAR TRANSFER DETAIL @ ROOF
SCALE: 3/8"=1'-0"
HEEL HEIGHT LESS THAN 9 1/2"
NO BLOCKING REQ'D



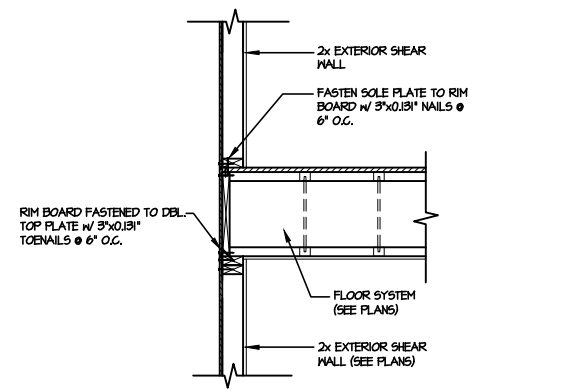
A2 TYPICAL SHEAR TRANSFER DETAIL @ ROOF
SCALE: 3/8"=1'-0"
HEEL HEIGHT BETWEEN 9 1/2" - 16"
BLOCKING REQ'D



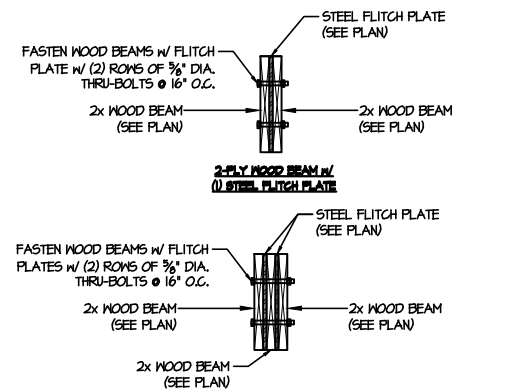
A3 TYPICAL SHEAR TRANSFER DETAIL @ RAISED HEEL TRUSS
SCALE: 3/8"=1'-0"
HEEL HEIGHT UP TO 48" MAX.



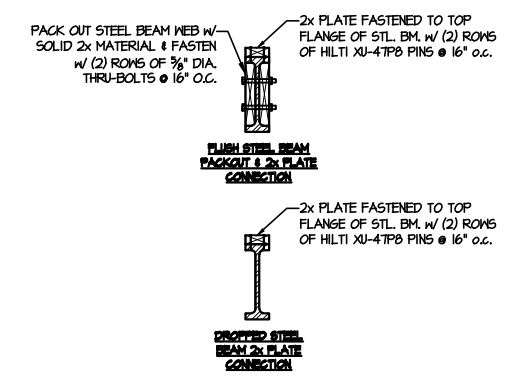
B TYPICAL GABLE END DETAIL
SCALE: 3/8"=1'-0"



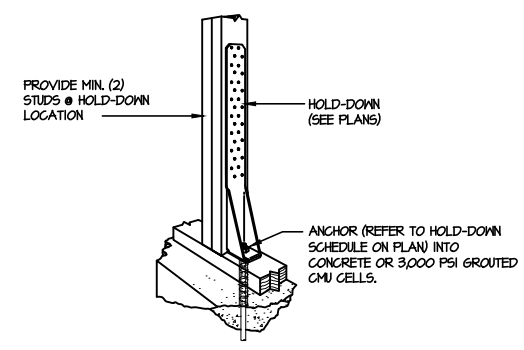
C TYPICAL SHEAR TRANSFER DETAIL BETWEEN FLOORS @ EXTERIOR WALL
SCALE: 3/8"=1'-0"



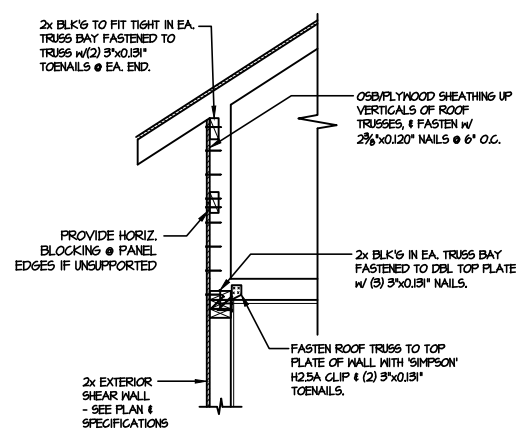
D TYPICAL FLITCH BEAM CONNECTION DETAIL
SCALE: 3/4"=1'-0"



E TYPICAL STEEL BEAM CONNECTION DETAIL
SCALE: 3/4"=1'-0"



FI TYPICAL HOLD DOWN INSTALLATION
SCALE: N.T.S.



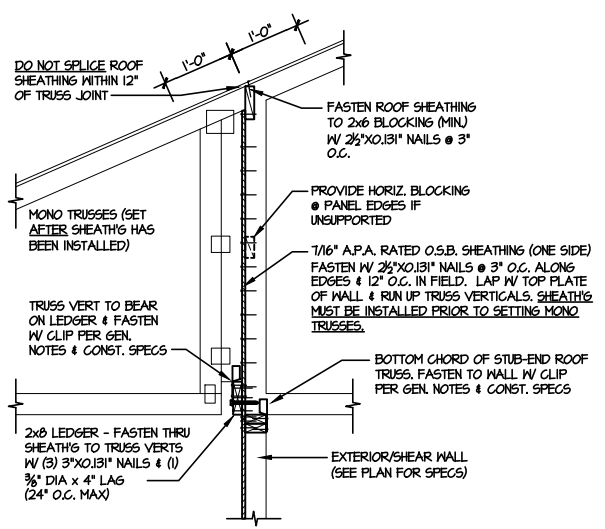
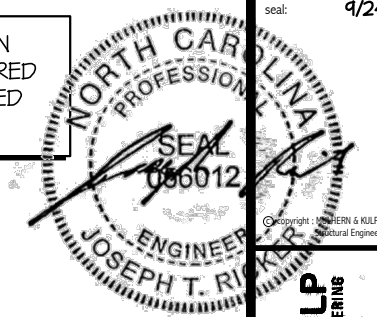
I TYPICAL SHEAR TRANSFER DETAIL @ RAISED HEEL TRUSS
SCALE: 3/8"=1'-0"
HEEL HEIGHT GREATER THAN 48"

LETTERED DETAILS ARE TYPICAL FOR THIS HOME & SHALL BE IMPLEMENTED IN ALL APPLICABLE AREAS. THESE DETAILS ARE NOT "CUT" ON THE PLANS.

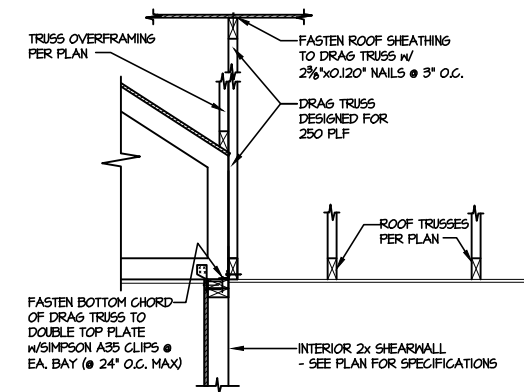
NUMBERED DETAILS ARE PLAN SPECIFIC AND ARE ONLY REQUIRED WHERE SPECIFICALLY INDICATED ("CUT") ON THE PLANS.

LETTERED DETAILS ARE TYPICAL FOR THIS HOME & SHALL BE IMPLEMENTED IN ALL APPLICABLE AREAS. THESE DETAILS ARE NOT "CUT" ON THE PLANS.

NUMBERED DETAILS ARE PLAN SPECIFIC AND ARE ONLY REQUIRED WHERE SPECIFICALLY INDICATED ("CUT") ON THE PLANS.



1 SHEAR TRANSFER DETAIL @
BREAK IN TRUSSES OVER SHEAR WALL
SCALE: 3/4"=1'-0" - 22064
3/8"=1'-0" - 11x7



2 SHEAR TRANSFER DETAIL
AT INTERIOR SHEARWALL BELOW
SCALE: 3/4"=1'-0"

MULHERN+KULP
RESIDENTIAL STRUCTURAL ENGINEERING
300 Riverside Ave, Building 4 - Asheville, PA 18002
P: 717-898-8887 | mulhern+kulp.com
NC LIC. #C-3825

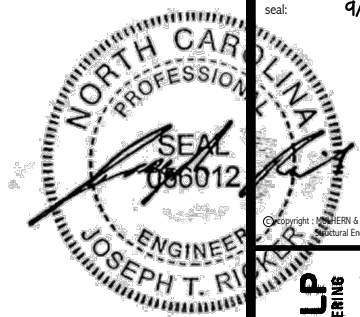
M&K project number:
126-22076
project mgr: JTR
drawn by: JAD
issue date: 07-09-24

REVISIONS:

09-24-24	JAD
----------	-----



FRAMING DETAILS
FARM AT NEIL'S CREEK
LOT 76 - COOPER 3 - ELEV. 4
RALEIGH, NC



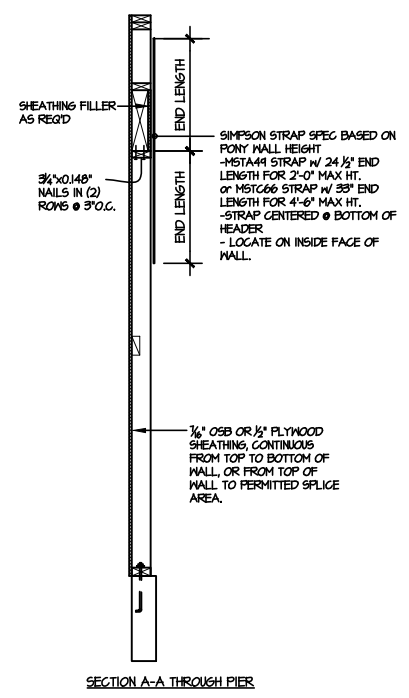
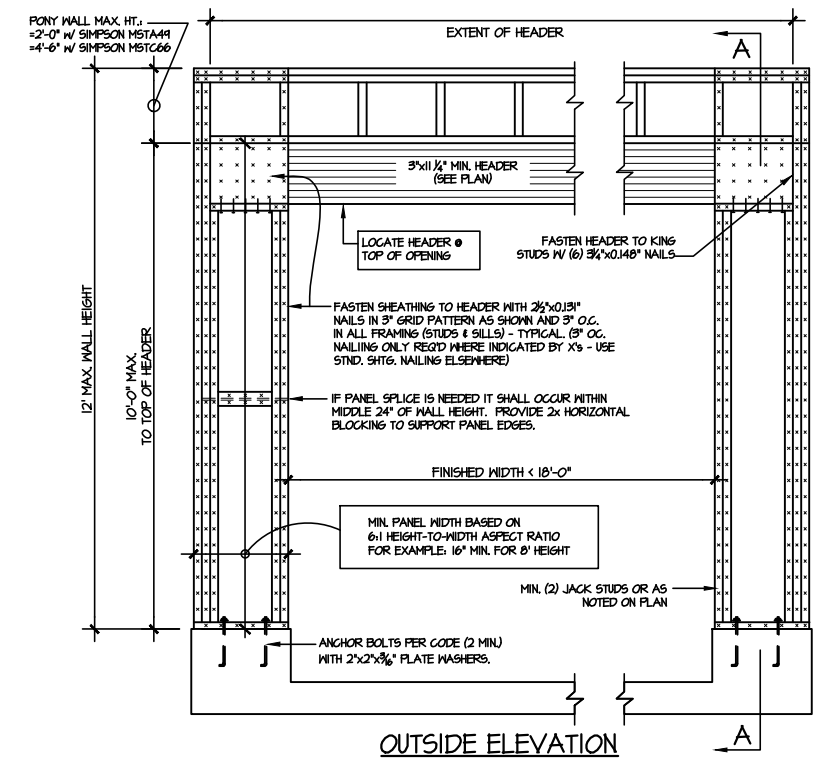
MULHERN+KULP
RESIDENTIAL STRUCTURAL ENGINEERING
3800 Bechtel Ave, Building 4 - Asheville, PA 19002
P: 718-888-8881
NC LIC. #C-3825

M&K project number:
126-22076
project mgr: JTR
drawn by: JAD
issue date: 07-09-24
REVISIONS:
09-24-24 JAD

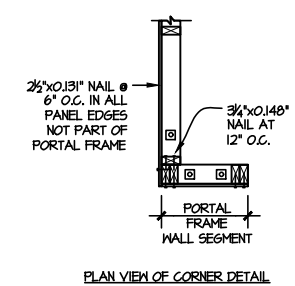
DRB
HOMES

FRAMING DETAILS
FARM AT NEIL'S CREEK
LOT 76 - COOPER 3 - ELEV. 4
RALEIGH, NC

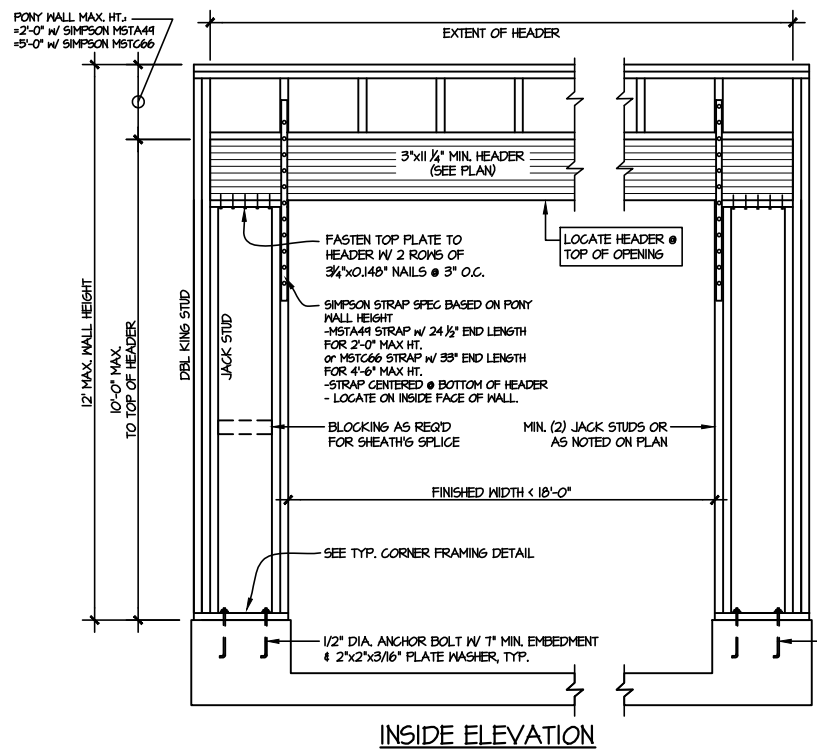
sheet:
SD2.2



NOTE: ALL SHEATHABLE AREAS OF EXTERIOR WALL SHALL BE FULLY SHEATHED WITH 1/2" PLYWOOD OR 3/4" OSB

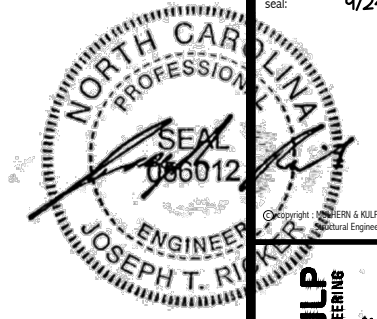


ALTERNATIVES TO 1/2" DIA. ANCHOR BOLT:
1) 1/2" DIA. x 6" LONG SIMPSON TITEN HD
2) 1/2" DIA. THREADED ROD EPOXY SET
W/4 1/2" EMBED. (MIN) UTILIZING HILTI HY200 EPOXY ANCHORING SYSTEM (OR EQUAL)



TWO SIDED GARAGE PORTAL FRAME BRACING
ELEVATION ON CONCRETE STEM
SCALE: N.T.S.

LETTERED DETAILS ARE TYPICAL FOR THIS HOME & SHALL BE IMPLEMENTED IN ALL APPLICABLE AREAS. THESE DETAILS ARE NOT "CUT" ON THE PLANS.
NUMBERED DETAILS ARE PLAN SPECIFIC AND ARE ONLY REQUIRED WHERE SPECIFICALLY INDICATED ("CUT") ON THE PLANS.



Copyright: MULHERN+KULP Structural Engineering, Inc.

MULHERN+KULP
RESIDENTIAL STRUCTURAL ENGINEERING
3800 Beavercreek Ave., Building 4 - Asheville, PA 18002
P: 718-348-8881 • M: mulhern@mulhernkulp.com

NC LIC. #C-3825

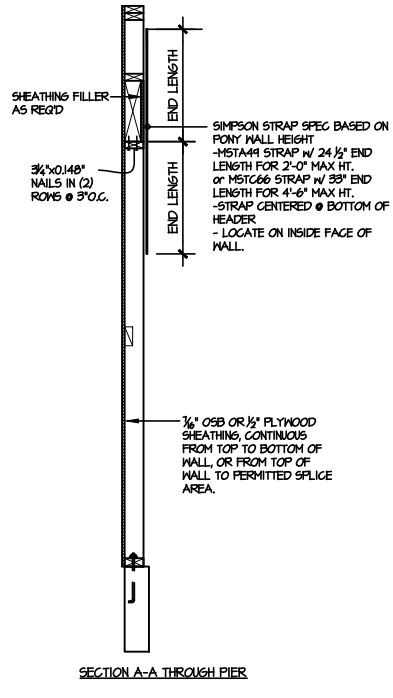
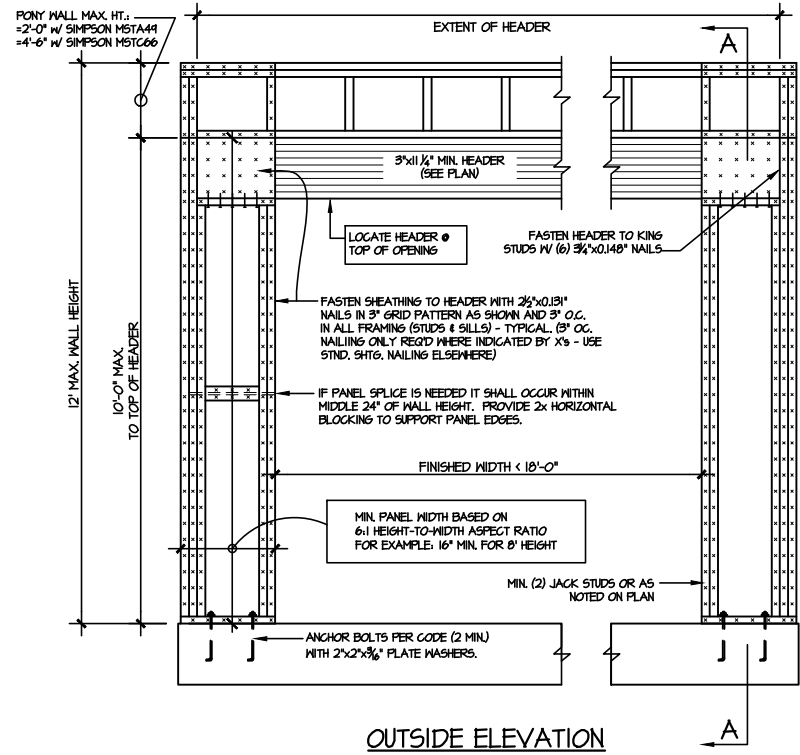
M&K project number:	126-22076
project mgr:	JTR
drawn by:	JAD
issue date:	07-09-24
REVISIONS:	
09-24-24	JAD



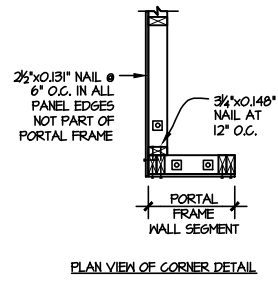
FRAMING DETAILS
FARM AT NEIL'S CREEK
LOT 76 - COOPER 3 - ELEV. 4
RALEIGH, NC

sheet:

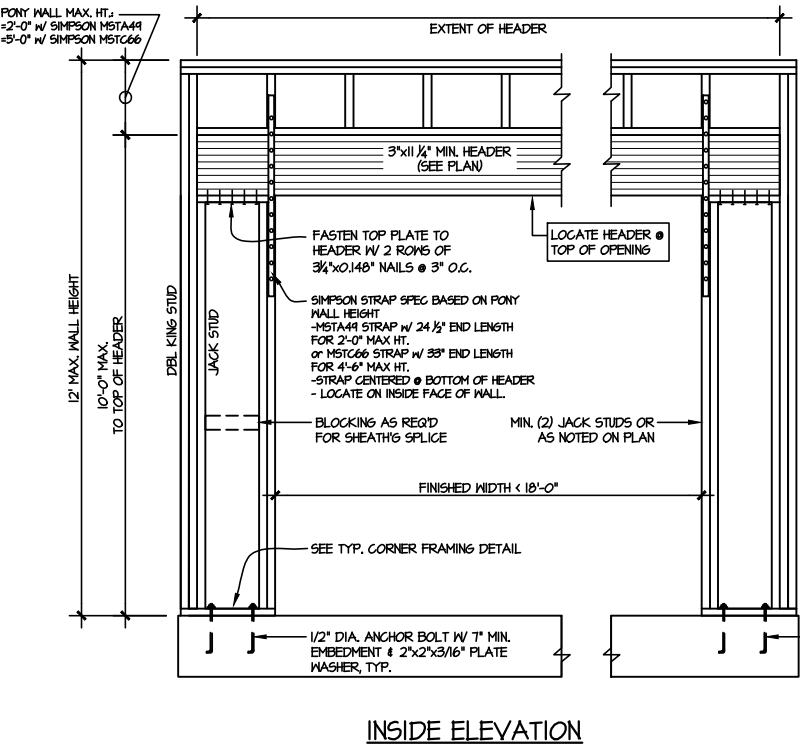
SD2.4



NOTE: ALL SHEATHABLE AREAS OF EXTERIOR WALL SHALL BE FULLY SHEATHED WITH 1/2" PLYWOOD OR 1/4" OSB



- ALTERNATIVES TO 1/2" DIA. ANCHOR BOLT:
- 1) 1/2" DIA. x 6" LONG SIMPSON TITEN HD
 - 2) 1/2" DIA. THREADED ROD EPOXY SET W/ 4 1/2" EMBED. (MIN) UTILIZING HILTI HY200 EPOXY ANCHORING SYSTEM (OR EQUAL)

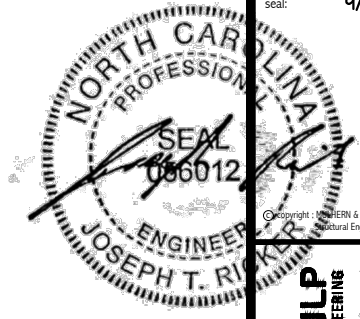


TWO SIDED PORTAL FRAME BRACING
ELEVATION ON CONCRETE STEM

SCALE: N.T.S.

LETTERED DETAILS ARE TYPICAL FOR THIS HOME & SHALL BE IMPLEMENTED IN ALL APPLICABLE AREAS. THESE DETAILS ARE NOT "CUT" ON THE PLANS.

NUMBERED DETAILS ARE PLAN SPECIFIC AND ARE ONLY REQUIRED WHERE SPECIFICALLY INDICATED ("CUT") ON THE PLANS.



MULHERN+KULP
RESIDENTIAL STRUCTURAL ENGINEERING
300 Bechtel Ave, Building 4 - Asheville, PA 28802
P 716-948-8881 - mulhern+kulp.com
NC LIC. #C-3825



M&K project number:
126-22076

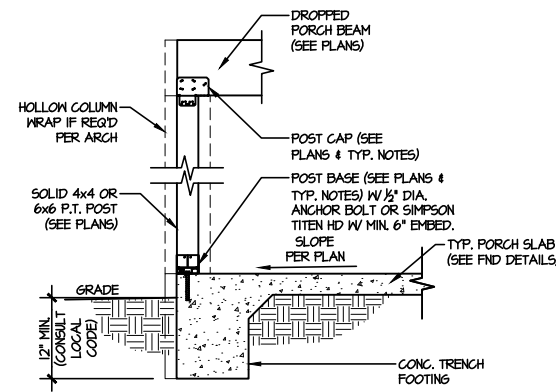
project mgr: JTR
drawn by: JAD
issue date: 07-09-24

REVISIONS:
09-24-24 JAD



FRAMING DETAILS
FARM AT NEIL'S CREEK
LOT 76 - COOPER 3 - ELEV. 4
RALEIGH, NC

sheet:
SD3.0



3 TYPICAL PORCH POST CONNECTION DETAIL
SCALE: NONE SLAB ON GRADE SHOWN (SIM. @ CRAWL & BSMT.)

LETTERED DETAILS ARE TYPICAL FOR THIS HOME & SHALL BE IMPLEMENTED IN ALL APPLICABLE AREAS. THESE DETAILS ARE NOT "CUT" ON THE PLANS.

NUMBERED DETAILS ARE PLAN SPECIFIC AND ARE ONLY REQUIRED WHERE SPECIFICALLY INDICATED ("CUT") ON THE PLANS.