

I, MICHAEL P. GRIFFIN, certify that under my direction and supervision this map was drawn from an actual field survey; that the error of closure of the survey as calculated by coordinates is 1: 10,000+; that the area shown hereon was calculated by coordinates.

Witness my hand and seal this day of MONTH 2024.

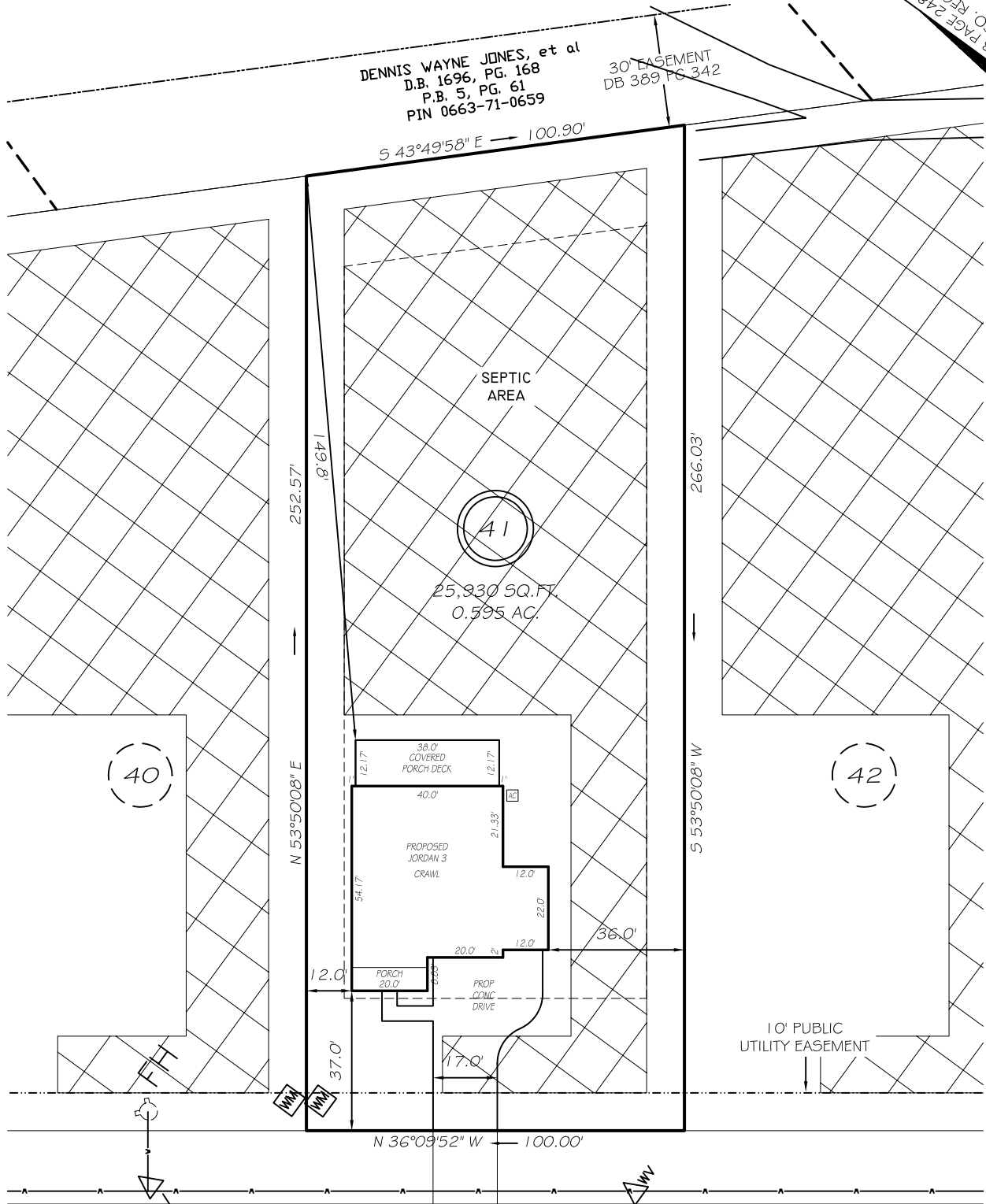
ZONING RA-30
SETBACKS

FRONT 35'
REAR 25'
SIDE 10'
CORNER SIDE 20'

DENNIS WAYNE JONES, et al
D.B. 1696, PG. 168
P.B. 5, PG. 61
PIN 0663-71-0659

30' BASEMENT
DB 389 PG 342

BM 2023 PAGE 248-249
HARNETT CO. REGISTR.



IMPERVIOUS AREAS

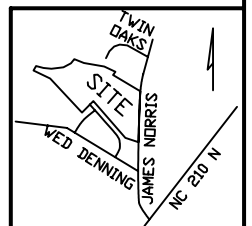
SHELBY MEADOW LANE

60' PUBLIC R/W & UTILITY

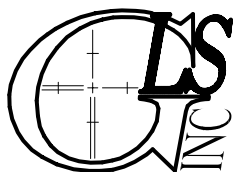
HOUSE	2716 SQ. FT.
DRIVE & WALKS	1096 SQ. FT.
AVC PAD	9 SQ. FT.
TOTAL	3821 SQ. FT.
ALLOWED	4130 SQ. FT.

LEGEND

EIP	EXISTING IRON PIPE	FES	FLARED END SECTION
IPS	IRON PIPE SET	WM	WATER METER
R/W	RIGHT OF WAY	CO	CLEAN OUT
N/F	NOW OR FORMERLY	FH	FIRE HYDRANT
EIS	EXISTING IRON STAKE	CB	CATCH BASIN



P R E L I M I N A R Y
NOT FOR RECORDATION,
SALES OR CONVEYANCE



GRIFFIN LAND SURVEYING, INC.

P.O. BOX 148
FUQUAY-VARINA, NC 27526
(919) - 567 - 1963

PLOT PLAN
FOR

DRB HOMES

HONEYCUTT HILLS

LOT 41

SHELBY MEADOW LANE

ANGIER, N.C.

HARNETT COUNTY BLACK RIVER TOWNSHIP

DRAWN BY KDF

DATE 6/26/24

CHECKED BY MPG

SCALE 1" = 40'