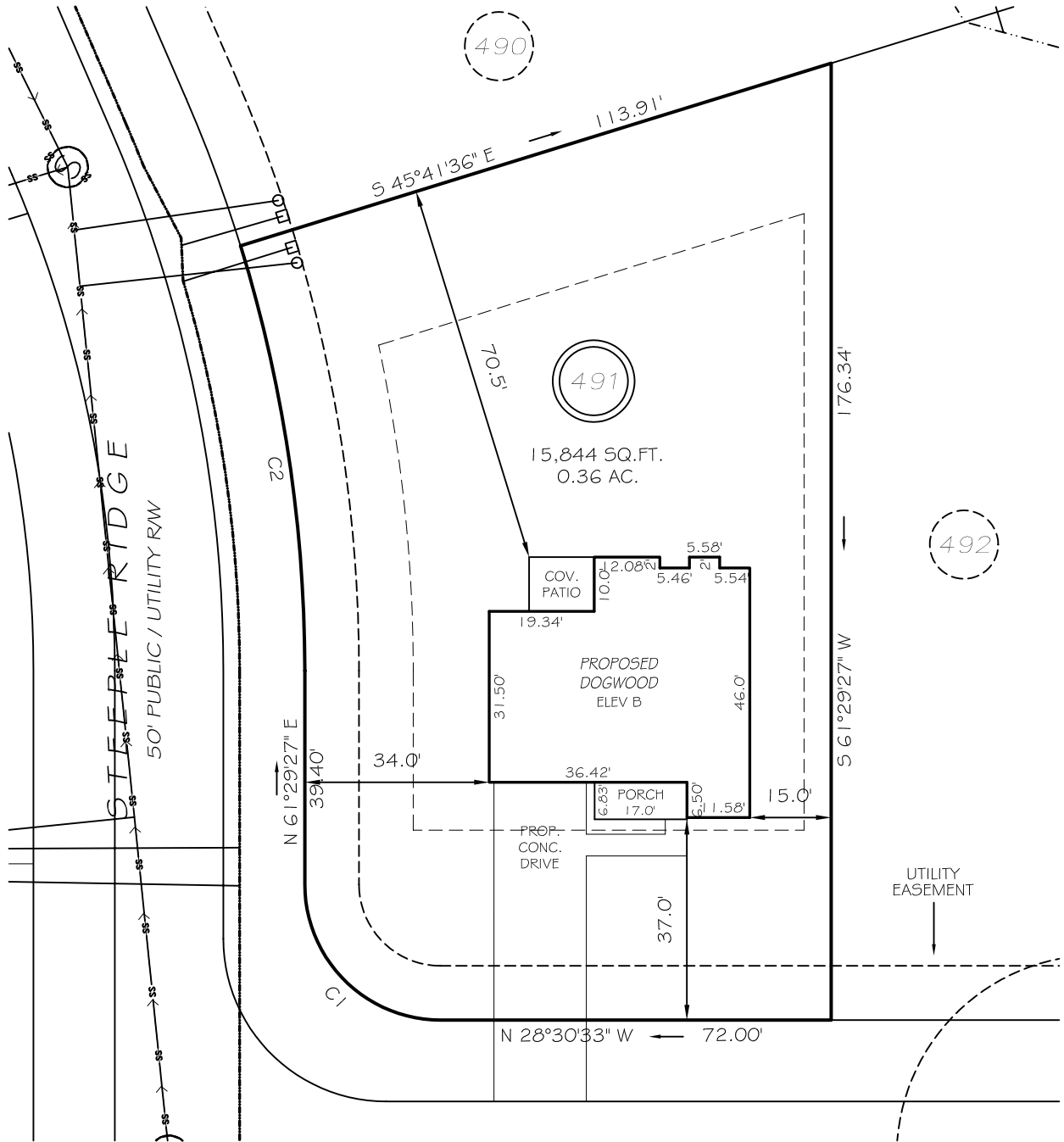


I, MICHAEL P. GRIFFIN, certify that under my direction and supervision this map was drawn from an actual field survey; that the error of closure of the survey as calculated by coordinates is 1: 10,000+; that the area shown hereon was calculated by coordinates.

Witness my hand and seal this day of MONTH 2024.

BK 2024 FGS 159-160
HARNETT CO. REGISTRY



CORNELIA CROSSING
50' PUBLIC / UTILITY RW

SETBACKS

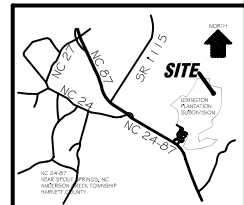
FRONT	35'
REAR	25'
SIDE (ONE SIDE)	5'
SIDE (ONE SIDE)	10'
CORNER SIDE	20'

C1 R=25.00' L=39.27' S16°29'27"W 35.36'
C2 R=265.00' L=79.48' N52°53'56"E 79.18'

P R E L I M I N A R Y
NOT FOR RECORDATION,
SALES OR CONVEYANCE

LEGEND

EIP	EXISTING IRON PIPE	FES	FLARED END SECTION
IPS	IRON PIPE SET	WM	WATER METER
R/W	RIGHT OF WAY	CO	CLEAN OUT
N/F	NOW OR FORMERLY	FH	FIRE HYDRANT
EIS	EXISTING IRON STAKE	CB	CATCH BASIN



GLS GRIFFIN LAND SURVEYING, INC.
P.O. BOX 148
FUQUAY-VARINA, NC 27526
(919) - 567 - 1963

PLOT PLAN
FOR
DREAM FINDERS HOMES, LLC
LEXINGTON PLANTATION
LOT 491
CORNELIA CROSSING
NORTH CAROLINA
HARNETT COUNTY ANDERSON CREEK TOWNSHIP

DRAWN BY KDF	DATE 7/1/24
CHECKED BY MPG	SCALE 1" = 30'