

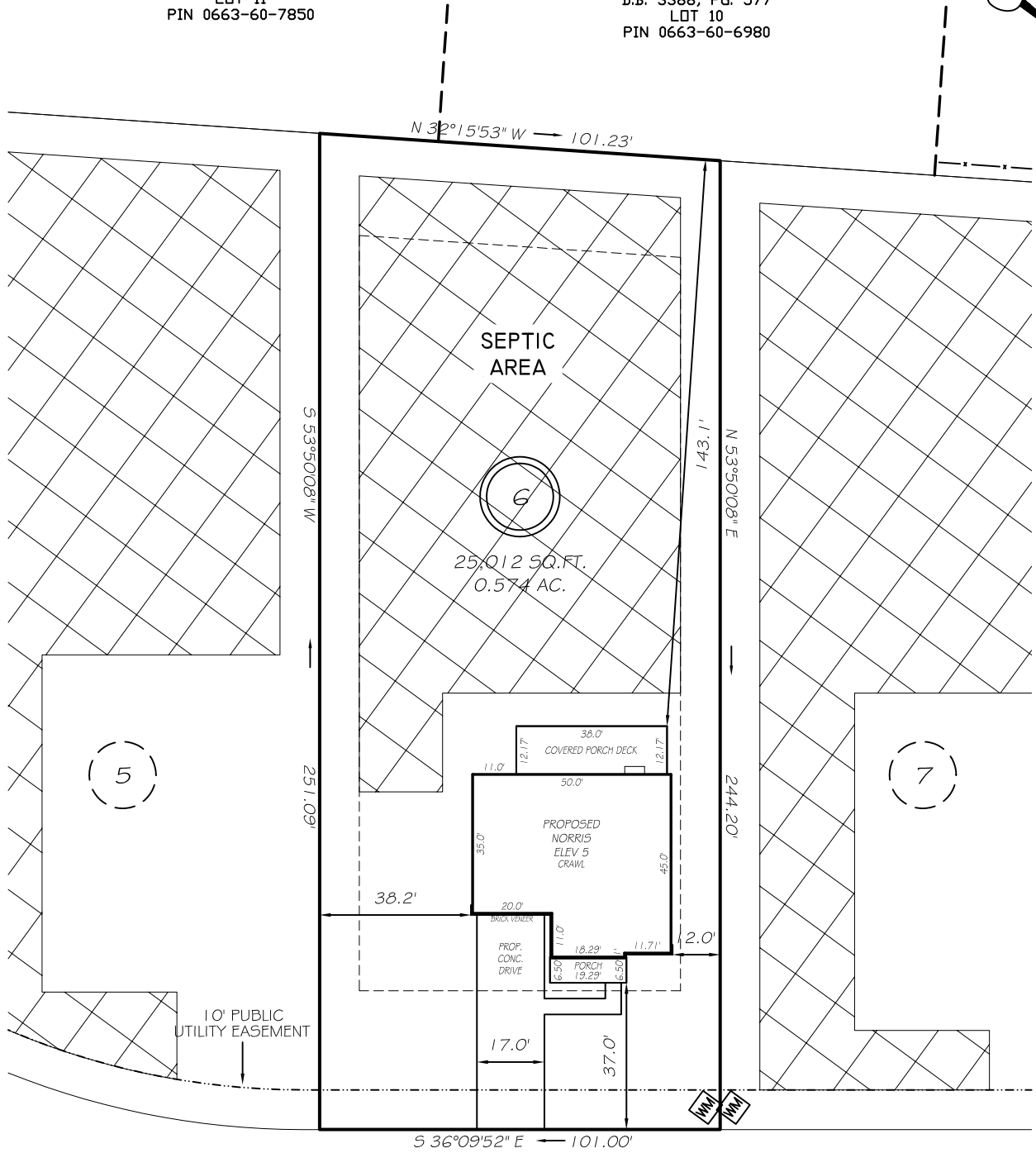
I, MICHAEL P. GRIFFIN, certify that under my direction and supervision this map was drawn from an actual field survey; that the error of closure of the survey as calculated by coordinates is 1: 10,000+; that the area shown hereon was calculated by coordinates.

Witness my hand and seal this day of MONTH 2024.

BM 2023 PAGE 248-249  
HARNETT CO. REGISTRY

ANTHONY L. GRAHAM  
D.B. 3165, PG. 677  
LOT 11  
PIN 0663-60-7850

DAVID L. SMITH  
D.B. 3388, PG. 577  
LOT 10  
PIN 0663-60-6980



IMPERVIOUS AREAS SHELBY MEADOW LANE

HOUSE	2676 SQ. FT.
DRIVE & WALKS	1013 SQ. FT.
PATIO	0 SQ. FT.
<b>TOTAL</b>	<b>3689 SQ. FT.</b>
ALLOWED	4130 SQ. FT.

60' PUBLIC R/W & UTILITY

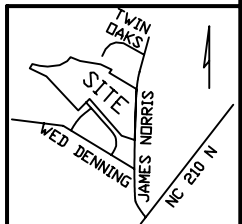
ZONING RA-30 SETBACKS

FRONT	35'
REAR	25'
SIDE	10'
CORNER SIDE	20'

**PRELIMINARY**  
NOT FOR RECORDATION,  
SALES OR CONVEYANCE

**LEGEND**

EIP	EXISTING IRON PIPE	FES	FLARED END SECTION
IPS	IRON PIPE SET	WM	WATER METER
R/W	RIGHT OF WAY	CO	CLEAN OUT
N/F	NOW OR FORMERLY	FH	FIRE HYDRANT
EIS	EXISTING IRON STAKE	CB	CATCH BASIN



**GRIFFIN LAND SURVEYING, INC.**  
P.O. BOX 148  
FUQUAY-VARINA, NC 27526  
(919) - 567 - 1963

**PLOT PLAN FOR DRB HOMES**

HONEYCUTT HILLS

LOT 6

117 SHELBY MEADOW LANE

ANGIER, N.C.

HARNETT COUNTY BLACK RIVER TOWNSHIP

DRAWN BY <b>KDF</b>	DATE <b>2/8/24</b>
CHECKED BY <b>MPG</b>	SCALE <b>1" = 40'</b>