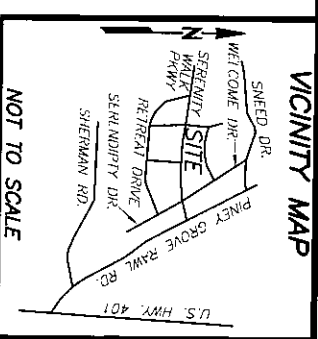
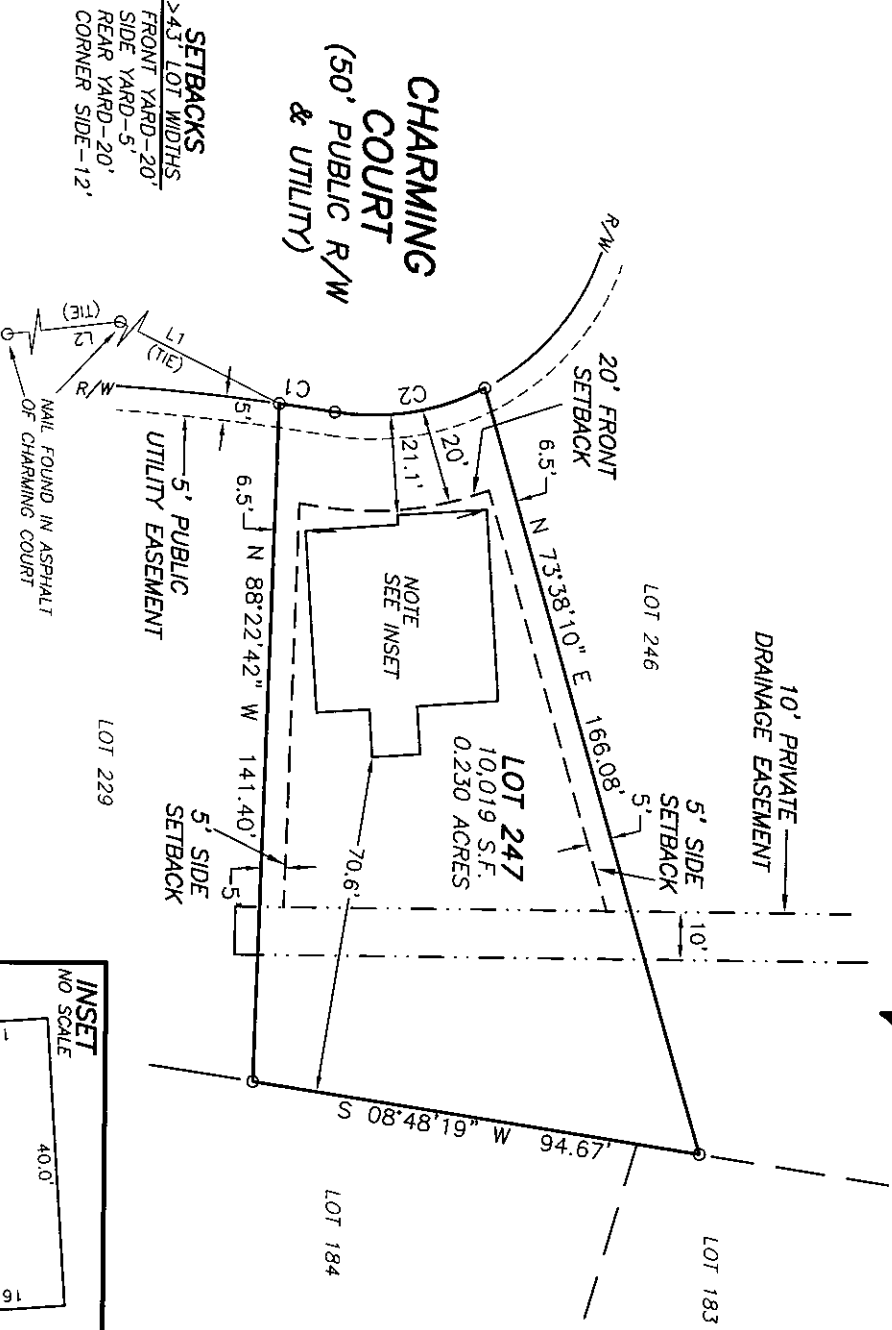
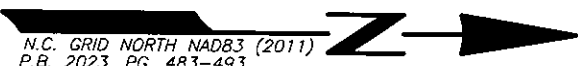


CURVE TABLE						
CURVE	DELTA	RADIUS	ARC	CHORD	TANGENT	CHORD BRG
C1	1°16'50"	525.00'	11.73'	11.73'	5.87'	N 08°16'31" E
C2	36°48'59"	50.00'	32.13'	31.58'	16.64'	N 09°29'33" W

LINE TABLE		
LINE	BEARING	DISTANCE
L1	S 26°41'50" W	93.55'
L2	S 06°36'36" E	99.52'



- REFERENCES:
- D.B. 4229, PG. 1542
P.N. 0645-93-1536,000
P.D. 08065502 0032 87
- NOTICE OF DEVELOPMENT GUIDELINES:
- D.B. 4149, PG. 210
- RESTRICTIVE COVENANTS:
- D.B. 4109, PG. 612

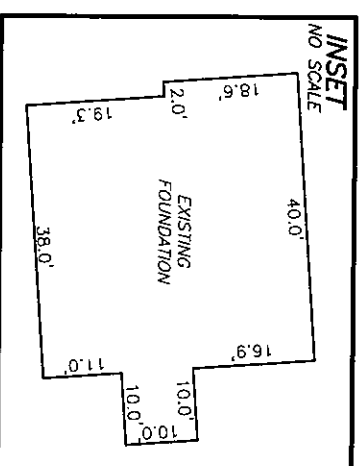


SETBACKS
 >43' LOT WIDTHS
 FRONT YARD-20'
 SIDE YARD-5'
 REAR YARD-20'
 CORNER SIDE-12'

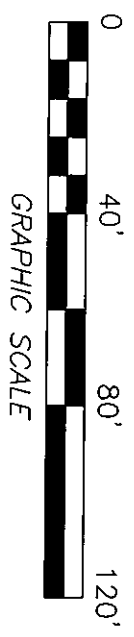
NOTES:

- ALL EASEMENTS, RIGHTS OF WAY AND BOUNDARY INFORMATION TAKEN FROM P.B. 2023, PG. 483-493 UNLESS OTHERWISE NOTED.
- PROPERTY IS SUBJECT TO ALL EASEMENTS AND RESTRICTIONS OF RECORD. NO TITLE EXAMINATION HAS BEEN DONE BY ROBINSON & PLANTE, P.C.

NOTE:
 RATIO OF PRECISION IS 1:10,000+. MISCLOSURE WAS DISTRIBUTED BY THE COMPASS METHOD. THE DISTANCES ON THIS MAP ARE ADJUSTED HORIZONTAL GROUND UNLESS NOTED OTHERWISE. ALL AREAS ARE CALCULATED BY COORDINATE COMPUTATION.



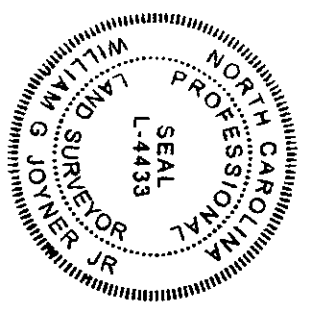
FOUNDATION SURVEY FOR DREES HOMES



REFERENCE: PLAT BOOK 2023PAGE 483-493.

LOT 247 SERENITY SUBDIVISION
PHASE 2F
90 CHARMING COURT
HARNETT COUNTY
FUQUAY-VARINA, N.C. 27526

I CERTIFY THAT THIS MAP WAS DRAWN UNDER MY SUPERVISION FROM AN ACTUAL SURVEY MADE UNDER MY SUPERVISION. DESCRIPTION RECORDED IN REFERENCES AS SHOWN THAT THE BOUNDARIES NOT SURVEYED ARE INDICATED AS DRAWN FROM INFORMATION IN IN PRECISION IS 1:10,000; AND THAT THIS MAP MEET THE REQUIREMENTS OF THE STANDARDS OF PRACTICE FOR LAND SURVEYING IN NORTH CAROLINA (21 NCAC 56.16000).
 THIS 28th DAY OF AUGUST 2024.
William R. Joyce Jr.
 PROFESSIONAL LAND SURVEYOR L-4433



ROBINSON & PLANTE PC
 LAND SURVEYING
 C-2687
 970 TRINITY ROAD
 RALEIGH, N.C. 27607
 PHONE (919) 859-6030
 FAX (919) 859-6032

DATE: 8-27-24

SCALE: 1"=40'

FILE: STVLOT247FD