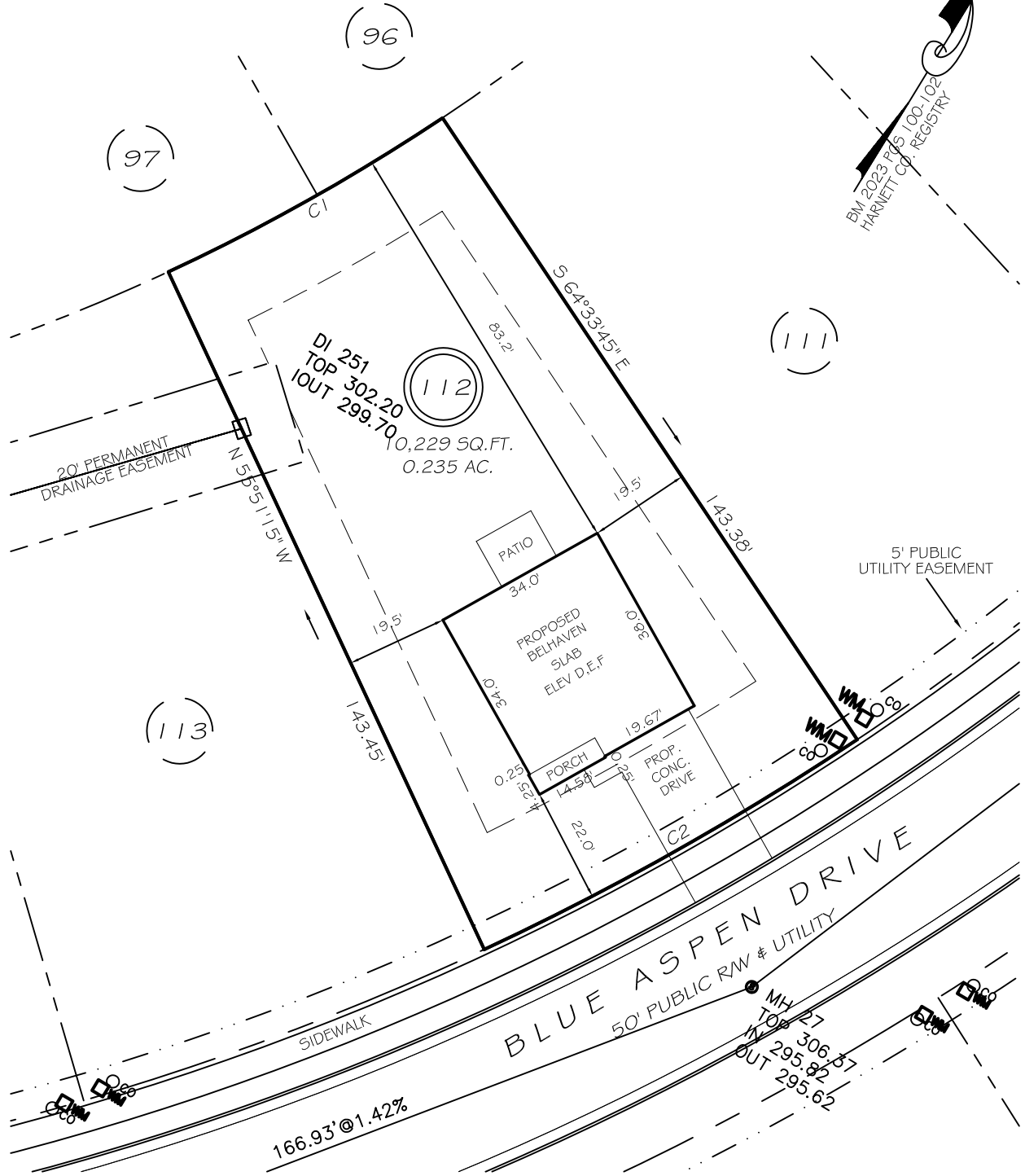


I, MICHAEL P. GRIFFIN, certify that under my direction and supervision this map was drawn from an actual field survey; that the error of closure of the survey as calculated by coordinates is 1: 10,000+; that the area shown hereon was calculated by coordinates.

Witness my hand and seal this day of MONTH 2024.

B.M. 2023 F.S. 100-102
HARNETT CO. REGISTRY



IMPERVIOUS AREAS

HOUSE	1297 SQ. FT.
DRIVE & WALKS	403 SQ. FT.
PATIO	120 SQ. FT.
TOTAL	1820 SQ. FT.
ALLOWED	3000 SQ. FT.

SETBACKS

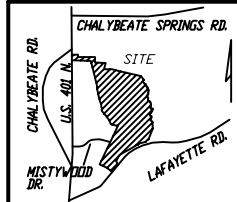
FRONT	20'
REAR	15'
SIDE	10'
CORNER SIDE	15'

C1 R=398.00' L=60.43' S29°51'17"W 60.37'
C2 R=541.00' L=82.23' S29°47'30"W 82.15'

PRELIMINARY
NOT FOR RECORDATION,
SALES OR CONVEYANCE

LEGEND

EIP	EXISTING IRON PIPE	MH	MANHOLE
IPS	IRON PIPE SET	WM	WATER METER
R/W	RIGHT OF WAY	CO	CLEAN OUT
N/F	NOW OR FORMERLY	FH	FIRE HYDRANT
EIS	EXISTING IRON STAKE	CB	CATCH BASIN



GRIFFIN LAND SURVEYING, INC.

P. O. BOX 148
FUQUAY-VARINA, NC 27526
(919) - 567 - 1963

PLOT PLAN FOR

D. R. HORTON

WOODGROVE

LOT 112

BLUE ASPEN DRIVE

NORTH CAROLINA

HARNETT CO. HECTOR'S CREEK TWSHP

DRAWN BY **KDF**

DATE **3/27/24**

CHECKED BY **MPG**

SCALE **1" = 30'**