

Truss Connector Total List		
Manuf	Product	Qty
	HGUS7.25/10	1
Simpson	THA422	21
Simpson	THAC422	1

PlotID	Length	Product	Products		
			Plies	Net Qty	Fab Type
BM1	12' 0"	1-3/4" x 11-7/8" VERSA-LAM@ 2.0 3100 SP	2	2	MFD
BM2	8' 0"	1-3/4" x 14" VERSA-LAM@ 2.0 3100 SP	2	2	MFD
BM3	17' 0"	1-3/4" x 16" VERSA-LAM@ 2.0 3100 SP	2	2	MFD
BM4	20' 0"	1-3/4" x 18" VERSA-LAM@ 2.0 3100 SP	3	3	MFD
BM2	20' 0"	1 3/4" x 9 1/4" Generic Material	3	3	MFD

▲ = LEFT END OF TRUSS

FOR CONSTRUCTION

Client: DRB GROUP-RALEIGH
 Job: LOT 0.0108 BLAKE POND
 Plan Information: STONEFIELD-1

NOT TO SCALE
 Drawn By: CGT
 Date: 06/14/24
 Job #: Sales Rep: KYLE GIBSON
 24-5444-F02 Phone: 864-304-3282

REVISIONS:

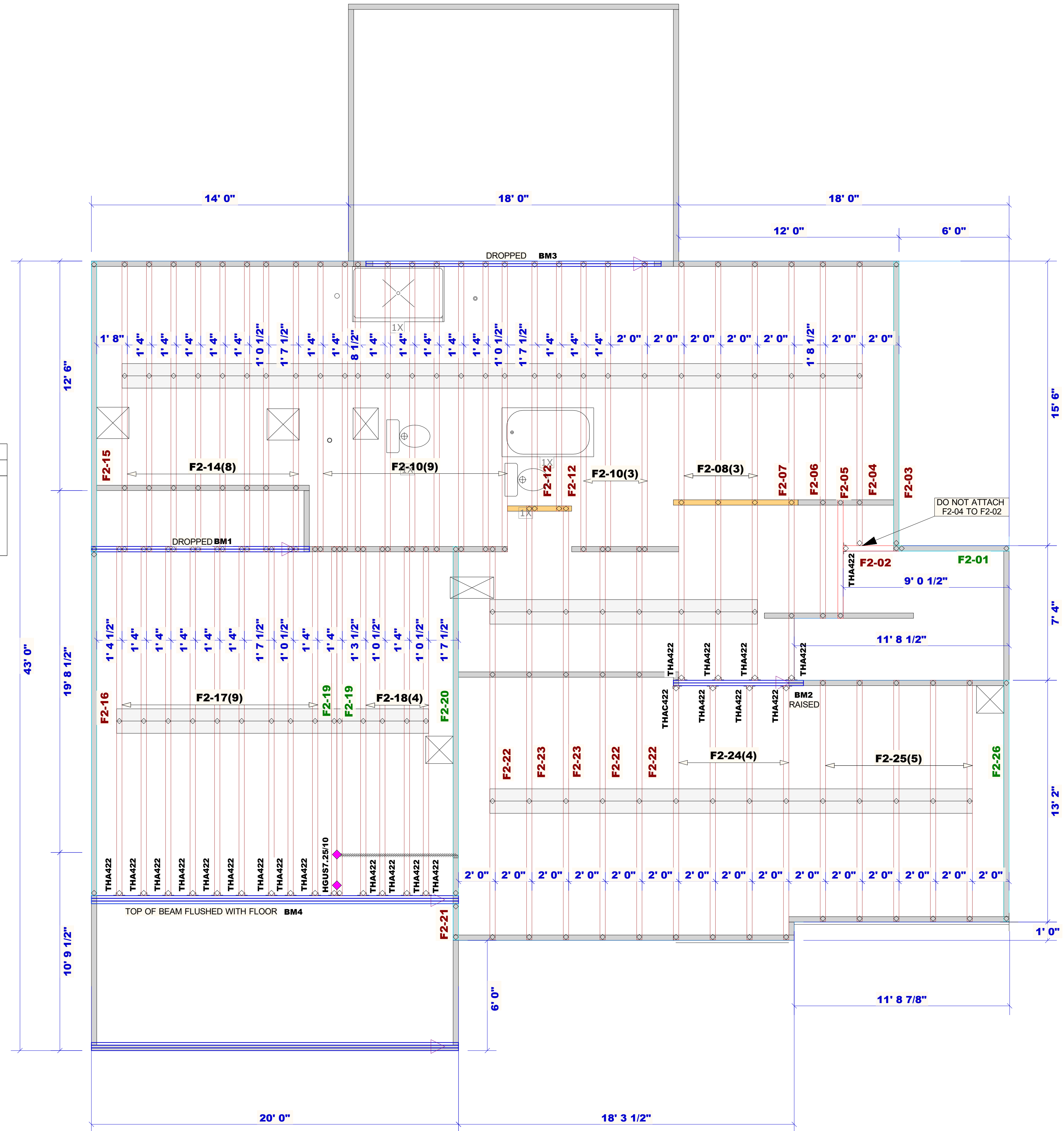


Moncks Corner/Easley, SC (800) 475-3999
 Sparta, NC (336) 372-2226

WARNING! Long span trusses, 60' or greater in length, require extreme care and experience for proper and safe handling and installation. For general handling and installation guidance, see the "Guide to Good Practice for Handling, Installing, Restraining & Bracing of Metal Plate Connected Wood Trusses ("BCSI"), JOINTLY PRODUCED BY SBCA and TPI. For project specific guidance, consult with a registered design professional. ATLANTIC assumes no responsibility for the handling, installation or bracing of trusses.

Products						
Fab Type	Net Qty	Plies	Product	Length	PlotID	
MFD	2	2	1-3/4" x 11-7/8" VERSA-LAM® 2.0 3100 SP	12' 0"	BM1	
MFD	2	2	1-3/4" x 14" VERSA-LAM® 2.0 3100 SP	8' 0"	BM2	
MFD	2	2	1-3/4" x 16" VERSA-LAM® 2.0 3100 SP	17' 0"	BM3	
MFD	3	3	1-3/4" x 18" VERSA-LAM® 2.0 3100 SP	20' 0"	BM4	
MFD	3	3	1 3/4" x 9 1/4" Generic Material	20' 0"	BM2	

Truss Connector Total List		
Qty	Product	Manuf
1	HGUS7.25/10	
21	THA422	Simpson
1	THAC422	Simpson



▲ = LEFT END OF TRUSS

FOR CONSTRUCTION

Client: DRB GROUP-RALEIGH
 Job: LOT 0.0108 BLAKE POND
 Plan Information: STONEFIELD-1

FLOOR

NOT TO SCALE
 Date: 06/14/24
 Job #: 24-5444-F02
 Sales Rep: KYLE GIBSON
 Drawn By: CGT
 Phone: 864-304-3282

REVISIONS:



Moncks Corner/Easley, SC (800) 475-3999
 Sparta, NC (336) 372-2226

WARNING! Long span trusses, 60' or greater in length, require extreme care and experience for proper and safe handling and installation. For general handling and installation guidance, see the "Guide to Good Practice for Handling, Installing, Restraining & Bracing of Metal Plate Connected Wood Trusses ("BCSI"), JOINTLY PRODUCED BY SBCA and TPI. For project specific guidance, consult with a registered design professional. ATLANTIC assumes no responsibility for the handling, installation or bracing of trusses.