

▲ = LEFT END OF TRUSS

FOR CONSTRUCTION

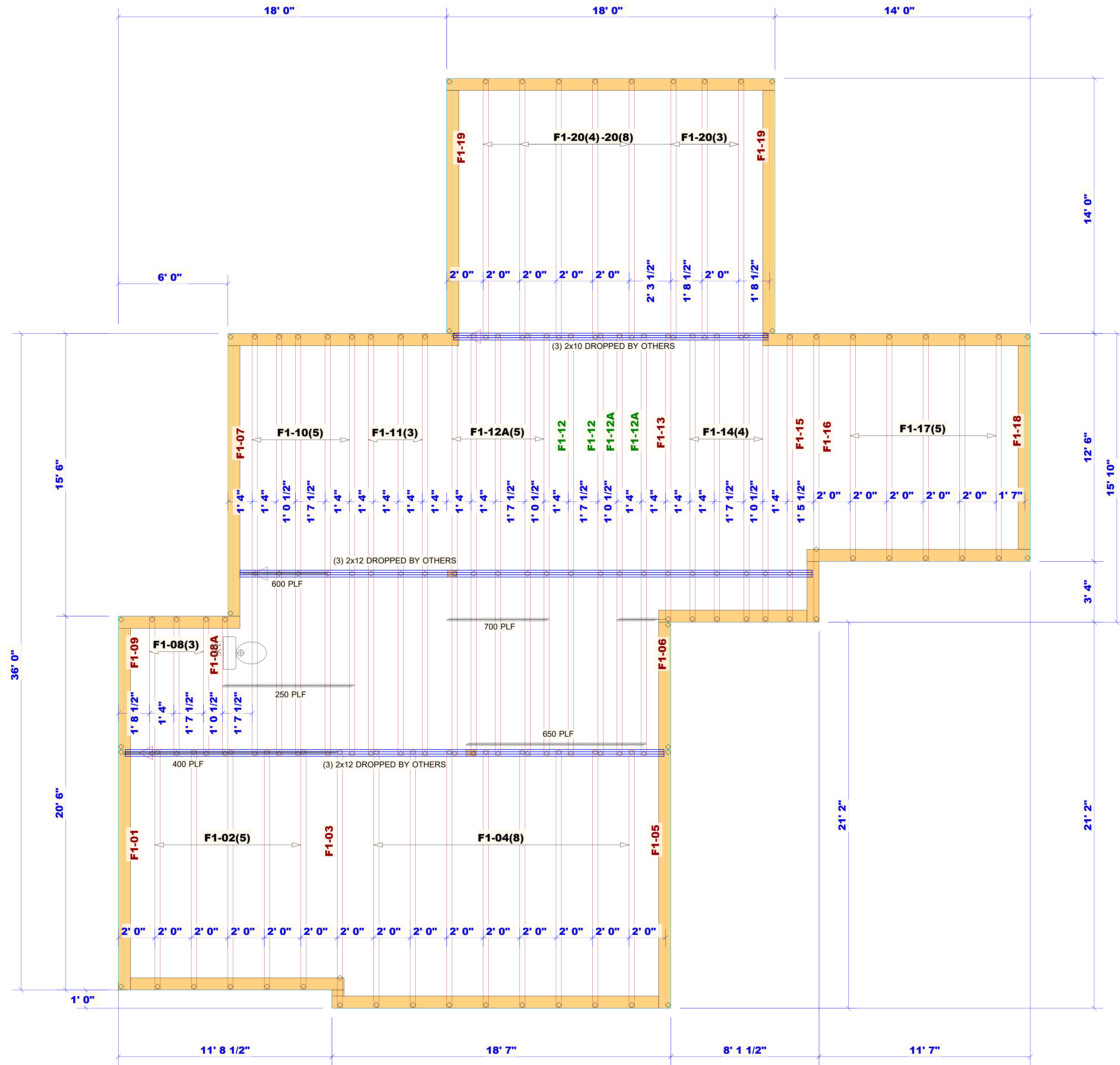
Client: DRB GROUP-RALEIGH	
Job: LOT 0.0108 BLAKE POND	
Plan Information: STONEFIELD-1	
NOT TO SCALE	Date: 06/17/24
Drawn By: CGT	Job #: 24-5444-F01
	Sales Rep: KYLE GIBSON
	Phone: 864-304-3282

REVISIONS:



Moncks Corner/Easley, SC (800) 475-3999
Sparta, NC (336) 372-2226

WARNING! Long span trusses, 60' or greater in length, require extreme care and experience for proper and safe handling and installation. For general handling and installation guidance, see the "Guide to Good Practice for Handling, Installing, Restraining & Bracing of Metal Plate Connected Wood Trusses ("BCSI"), JOINTLY PRODUCED BY SBCA and TPI. For project specific guidance, consult with a registered design professional. ATLANTIC assumes no responsibility for the handling, installation or bracing of trusses.



WARNING! Long span trusses, 60' or greater in length, require extreme care and experience for proper and safe handling and installation. For general handling and installation guidance, see the "Guide to Good Practice for Handling, Installing, Restraining & Bracing of Metal Plate Connected Wood Trusses ("BCSI"), JOINTLY PRODUCED BY SBCA and TPI. For project specific guidance, consult with a registered design professional. ATLANTIC assumes no responsibility for the handling, installation or bracing of trusses.

▲ = LEFT END OF TRUSS

FOR CONSTRUCTION

Client: DRB GROUP-RALEIGH	
Job: LOT 0.0108 BLAKE POND	
Plan Information: STONEFIELD-1	
NOT TO SCALE	Date: 06/17/24
Drawn By: CGT	Sales Rep: KYLE GIBSON
	Phone: 864-304-3282

REVISIONS:



Moncks Corner/Easley, SC (800) 475-3999
Sparta, NC (336) 372-2226

FLOOR