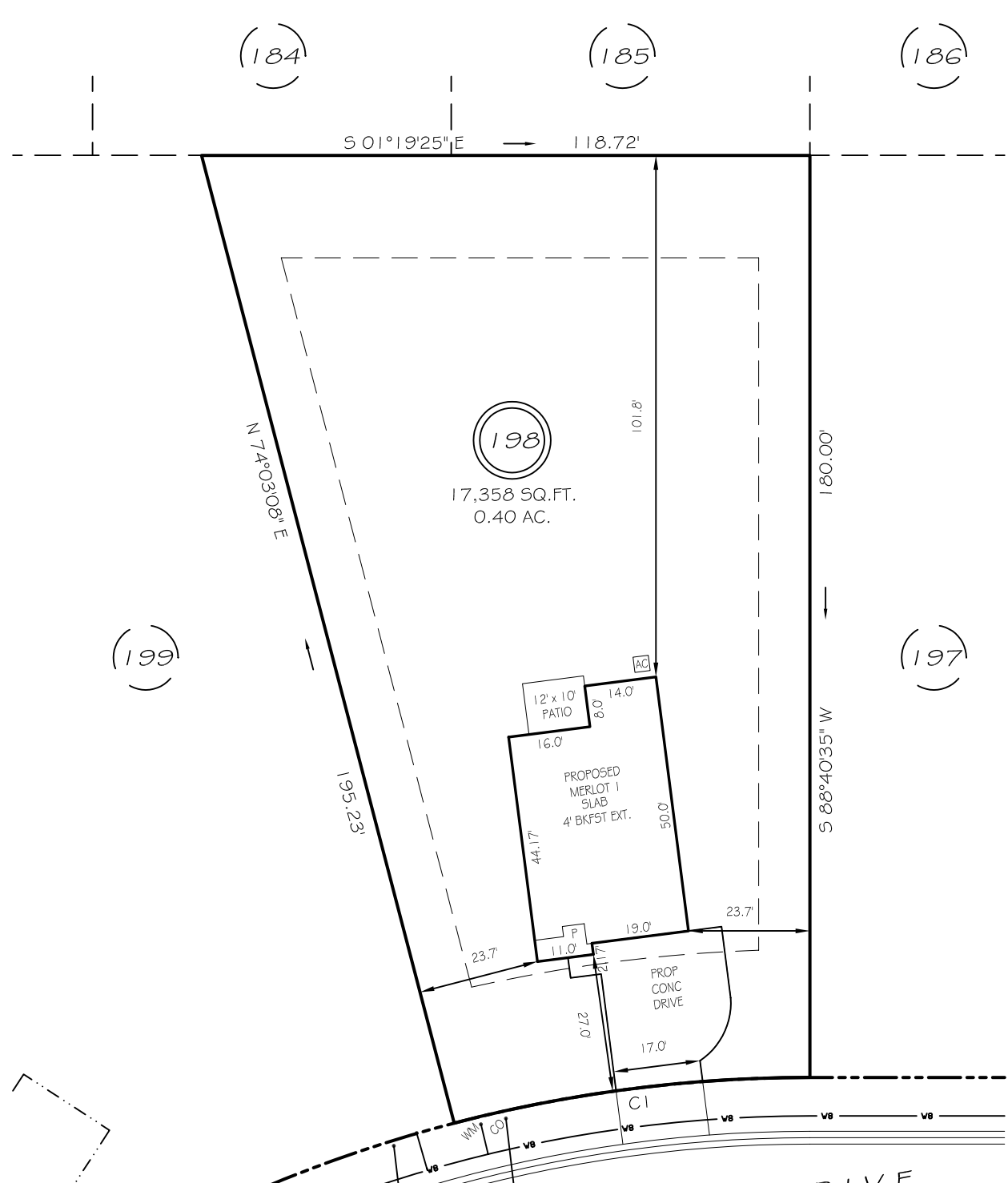


I, MICHAEL P. GRIFFIN, certify that under my direction and supervision this map was drawn from an actual field survey; that the error of closure of the survey as calculated by coordinates is 1: 10,000+; that the area shown hereon was calculated by coordinates.

Witness my hand and seal this day of MONTH 2024.

BK 2023 PGS 658-660
HARNETT CO. REGISTRY



IMPERVIOUS AREAS

HOUSE	1396 SQ. FT.
DRIVE & WALKS	688 SQ. FT.
PATIO	120 SQ. FT.
AVC PAD	9 SQ. FT.
TOTAL	2213 SQ. FT.
ALLOWED	3800 SQ. FT.

WINDING CREEK DRIVE
50' PUBLIC RW & UTILITY ACCESS

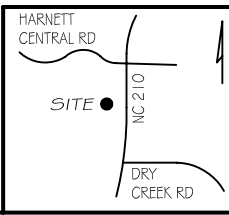
SETBACKS

FRONT	25'
REAR	20'
SIDE	10'
CORNER SIDE	20'

CI R=275.00' L=70.19' N08°38'09"W 70.00'

LEGEND

EIP	EXISTING IRON PIPE	FES	FLARED END SECTION
IPS	IRON PIPE SET	WM	WATER METER
RAW	RIGHT OF WAY	CO	CLEAN OUT
N/F	NOW OR FORMERLY	FH	FIRE HYDRANT
EIS	EXISTING IRON STAKE	CB	CATCH BASIN



PRELIMINARY
NOT FOR RECORDATION,
SALES OR CONVEYANCE

GLS GRIFFIN LAND SURVEYING, INC.
 P.O. BOX 148
 FUQUAY-VARINA, NC 27526
 (919) - 567 - 1963

PLOT PLAN
FOR
DRB HOMES
 THE FARM AT NEILLS CREEK
 LOT 198
 WINDING CREEK DRIVE
 NORTH CAROLINA
 HARNETT COUNTY NEILL'S CREEK TWSHP

DRAWN BY KDF	DATE 6/5/24
CHECKED BY MPG	SCALE 1" = 30'