

PRELIMINARY PLOT PLAN FOR

SYNDICATE HOMES

LOT 2, ABARE REAL ESTATE
& PROPERTY MANAGEMENT

3751 RED HILL CHURCH ROAD

REF: D.B. 4204, PG. 1173

REF: P.B. 2023, PG. 628

GROVE TOWNSHIP

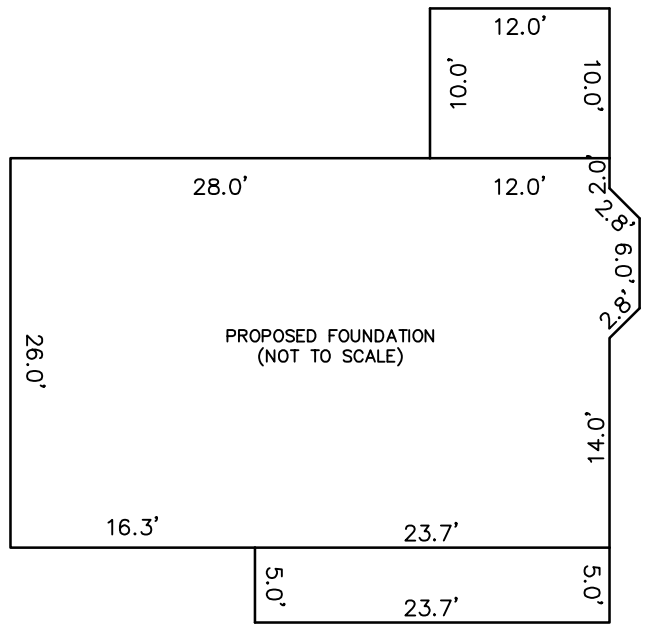
HARNETT COUNTY, NORTH CAROLINA

JUNE 10, 2024

ZONING RA-30



SCALE 1"=50'

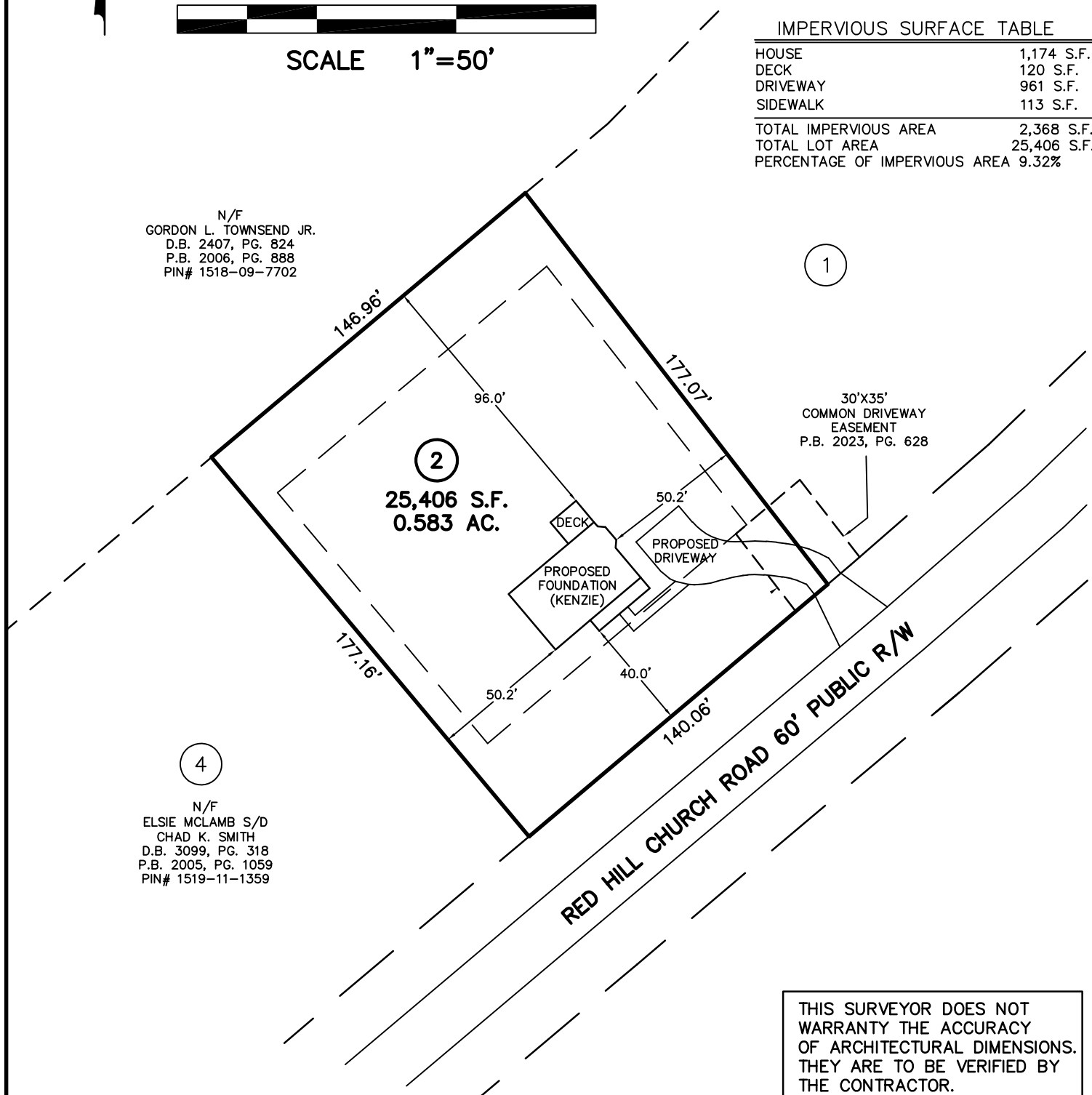


IMPERVIOUS SURFACE TABLE

HOUSE	1,174 S.F.
DECK	120 S.F.
DRIVEWAY	961 S.F.
SIDEWALK	113 S.F.
TOTAL IMPERVIOUS AREA	2,368 S.F.
TOTAL LOT AREA	25,406 S.F.
PERCENTAGE OF IMPERVIOUS AREA	9.32%

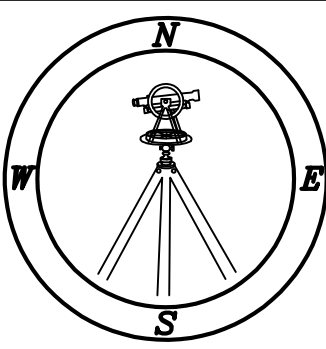
N/F
GORDON L. TOWNSEND JR.
D.B. 2407, PG. 824
P.B. 2006, PG. 888
PIN# 1518-09-7702

1



4
N/F
ELSIE MCLAMB S/D
CHAD K. SMITH
D.B. 3099, PG. 318
P.B. 2005, PG. 1059
PIN# 1519-11-1359

THIS SURVEYOR DOES NOT WARRANTY THE ACCURACY OF ARCHITECTURAL DIMENSIONS. THEY ARE TO BE VERIFIED BY THE CONTRACTOR.



CMP

Professional Land Surveyors
C-1525

333 S. White Street
Post Office Box 1253
Wake Forest, N.C. 27588
(919)556-3148

NOTES:
-THIS PLAN DOES NOT REFLECT AN ACTUAL SURVEY. IT IS A PRELIMINARY PLAN AND SHOULD BE USED FOR ITS INTENDED PURPOSE ONLY.
-NOT FOR RECORDATION, CONVEYANCES, OR SALES.