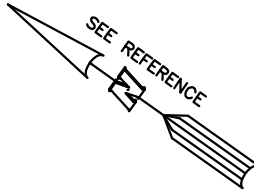
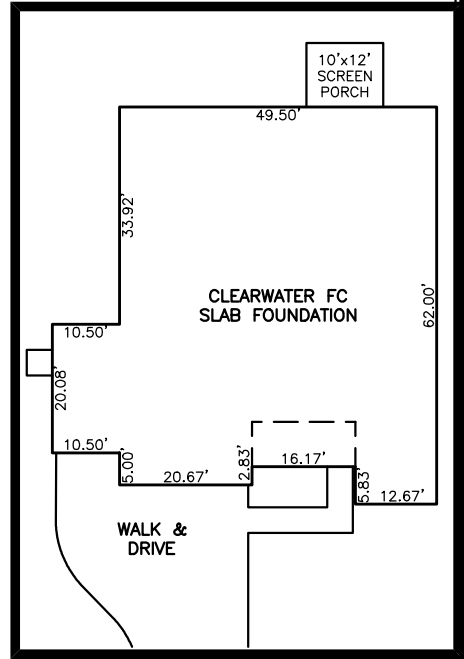


PLOT PLAN FOR
MATTAMY HOMES, LLC.
 79 BERING CIRCLE
 LOT 8, RIVERFALL SUBDIVISION, PHASE ONE
 BLACK RIVER TOWNSHIP, HARNETT COUNTY, NORTH CAROLINA

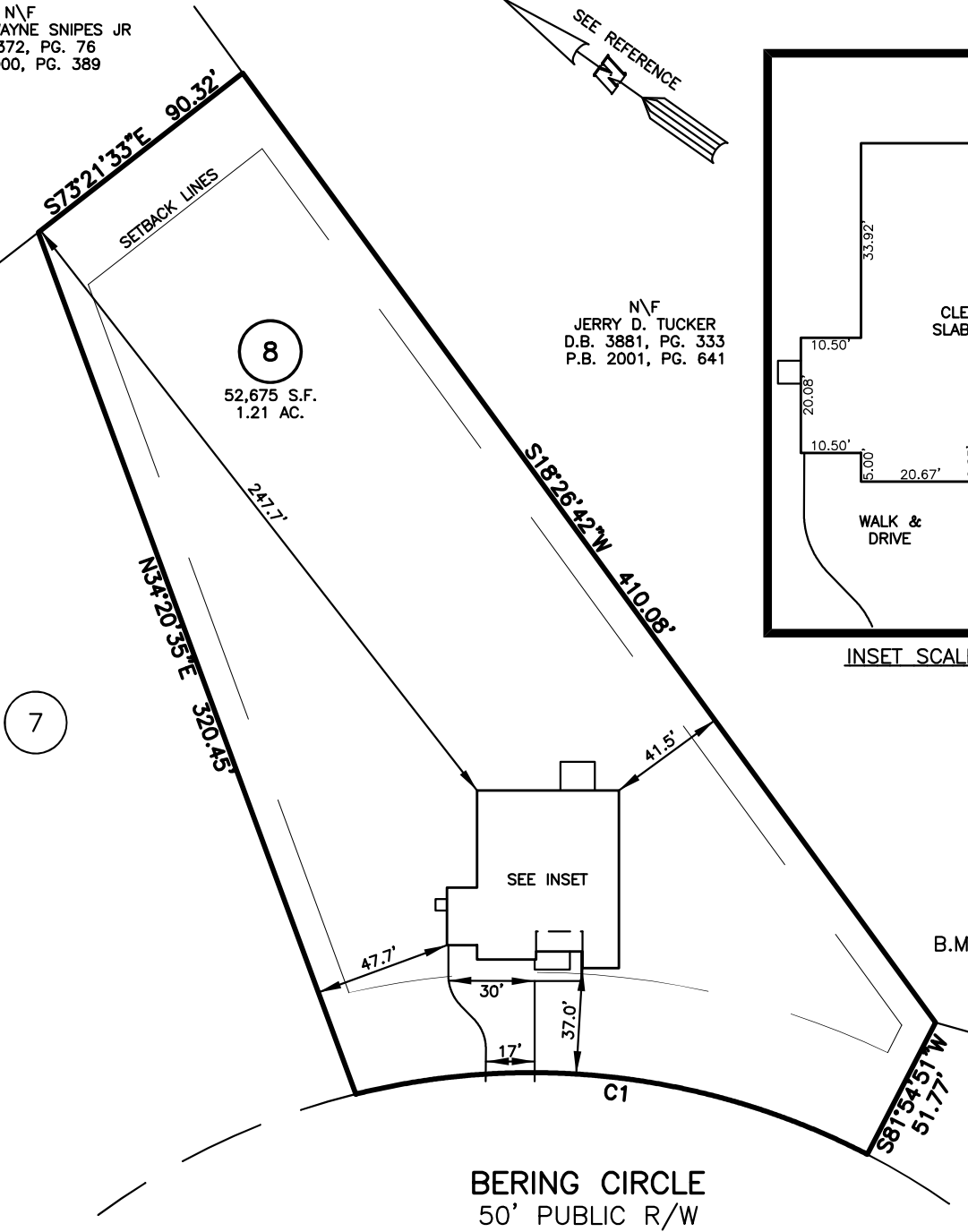
N\F
 KENNETH WAYNE SNIPES JR
 D.B. 3372, PG. 76
 P.B. 2000, PG. 389



N\F
 JERRY D. TUCKER
 D.B. 3881, PG. 333
 P.B. 2001, PG. 641



INSET SCALE: 1"=30'



SETBACK INFO

FRONT: 35'
 REAR: 25'
 SIDES: 10'

REFERENCES:

B.M. 2023, PG. 638

BERING CIRCLE
 50' PUBLIC R/W

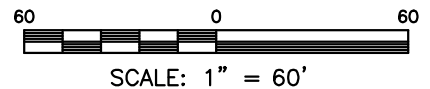
TRACT "A"
 OPEN SPACE

NUM	RADIUS	ARC	DELTA	CHORD BRG	CHORD
C1	255.00'	183.61'	41°15'22"	N28°42'48"W	179.67'

IMPERVIOUS SURFACES	S.F.
HOUSE	3,130
WALK & DRIVE	1,060
PORCH	120
PAD	20
TOTAL	4,330
MAX. IMPERVIOUS	5,500

LEGEND

- | | |
|---|---|
| <ul style="list-style-type: none"> △ AIR CONDITIONER BC BACK of CURB BFP BACK FLOW PREVENTER ○ CLEANOUT ■ CURB INLET DHS DRILL HOLE SET ECH EXISTING CONCRETE MONUMENT EDH EXISTING DRILL HOLE EIS EXISTING IRON STAKE EIP EXISTING IRON PIPE EM ELECTRIC METER EPK EXISTING PK NAIL ES ELECTRIC STUB FLA FLARED END SECTION FHY FIRE HYDRANT FOP FIBER OPTIC PEDESTAL GM GAS METER → GUY | <ul style="list-style-type: none"> INV. INVERT IPS IRON PIPE SET IRS IRON ROD SET ○ LIGHT POLE MNS MAGNETIC NAIL SET ⊗ MANHOLE SANITARY SEWER ⊗ MANHOLE STORM SEWER ⊗ OVERHEAD WIRES OHW PKS PK NAIL SET PNS POINT NOT SET RRS RAIL ROAD SPIKE TEL TELEPHONE PEDESTAL TRF TRANSFORMER UTV UTILITY POLE WM WATER METER WV WATER VALVE YI YARD INLET () FIELD MEASUREMENT |
|---|---|



NOTES

- THIS SURVEY SUBJECT TO ANY FACTS THAT MAY BE DISCLOSED BY A FULL AND ACCURATE TITLE SEARCH.
- THIS MAP MAY NOT BE A CERTIFIED SURVEY AND HAS NOT BEEN REVIEWED BY A LOCAL GOVERNMENT AGENCY FOR COMPLIANCE WITH ANY APPLICABLE LAND DEVELOPMENT REGULATIONS AND HAS NOT BEEN REVIEWED FOR COMPLIANCE WITH RECORDING REQUIREMENTS FOR PLATS.

PLOT PLAN
 PRELIMINARY PLAT- NOT FOR RECORDATION,
 CONVEYANCE OR SALES

REV CODE: 1.FLIP, 2.PLAN, 3.ROTATE, 4.MOVE, 5.SS
 6.SEVERAL OF ABOVE, 7.LAND FEATURE, 8. OTHER

DATE: MAY 31, 2024

F.B. _____

RWK, PA
 ENGINEERING ~ SURVEYING
 CORPORATE LICENSE: C-1771
 101 W. MAIN ST., SUITE 202
 GARNER, NC 27529
 PHONE (919) 779-4854
 FAX (919) 779-4056