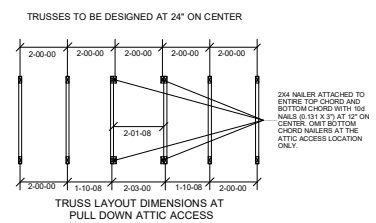
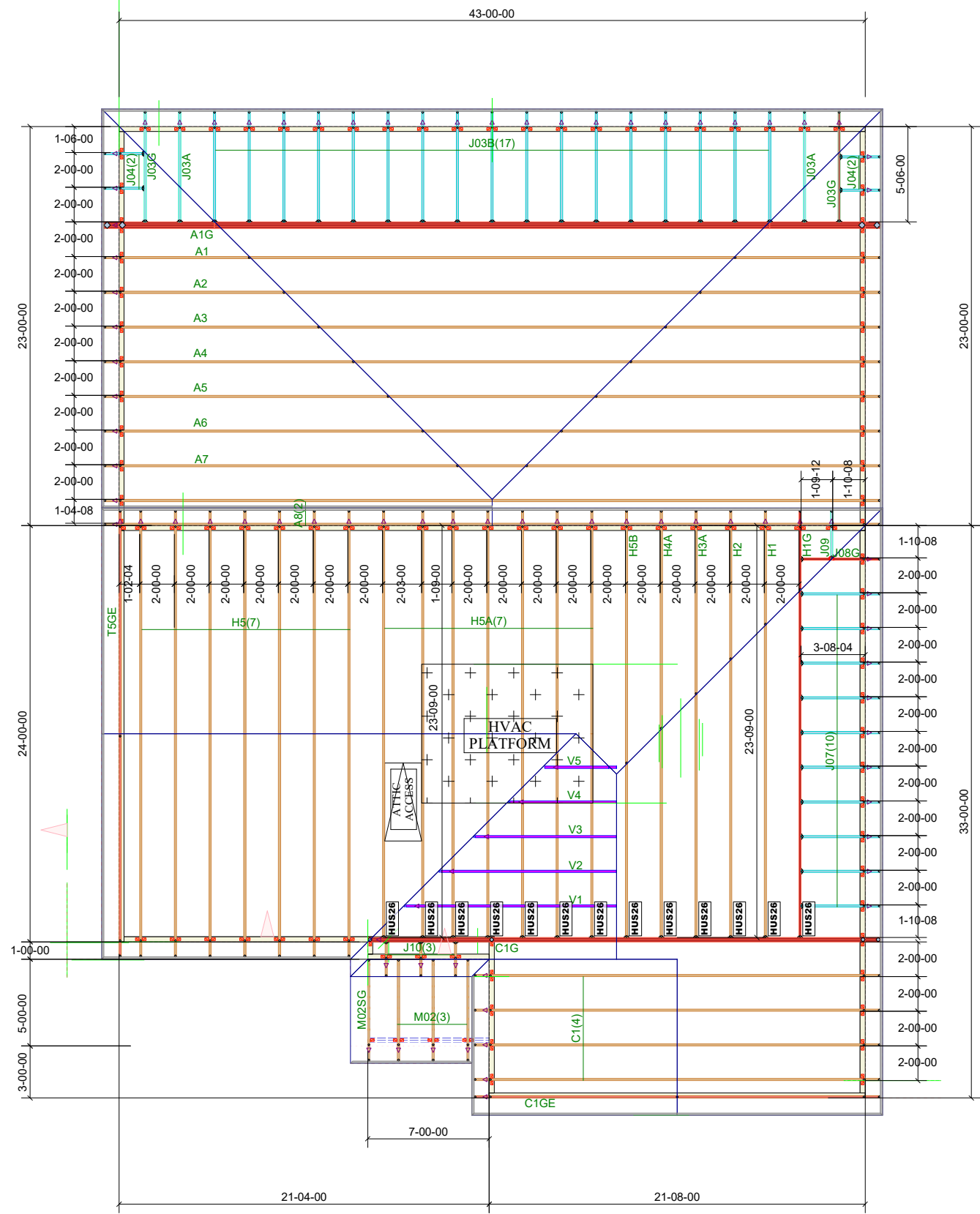


THE PURPOSE OF THIS DETAIL IS TO ILLUSTRATE HOW TO PROPERLY SPACE 24" O.C. ROOF TRUSSES TO ALLOW FOR A 25 1/2" OPENING FOR PULL DOWN ATTIC ACCESS



Truss Connector Total List		
Manuf	Product	Qty
Simpson	HUS26	13



84 Components
 200 Emmett Rd
 Dunn NC 28334
 United States
 Office: (910) 892-8400

KB HOMES
141 BIRCHWOOD GROVE
141 BIRCHWOOD GROVE - ROOF
Job# - P01984-12474

Location	2383-Dunn
Designer	Peter Hancock

DO NOT CUT, NOTCH, OR BORE HOLES UNLESS SPECIFIC, WRITTEN PERMISSION IS PROVIDED BY AN AUTHORIZED REPRESENTATIVE OF 84 LUMBER.

TRUSS INSTALLATION REQUIRES TEMPORARY AND PERMANENT BRACING. GENERAL GUIDANCE IS PROVIDED IN SBCA DOC'S B-1 and B-3. THESE ARE INCLUDED WITH EACH JOB IN YOUR TRUSS PACKET.

Sheet # **1** of **1**
Roof Truss Placement Plan
 NOT TO SCALE
 DESIGNED DATE
 6/7/2024