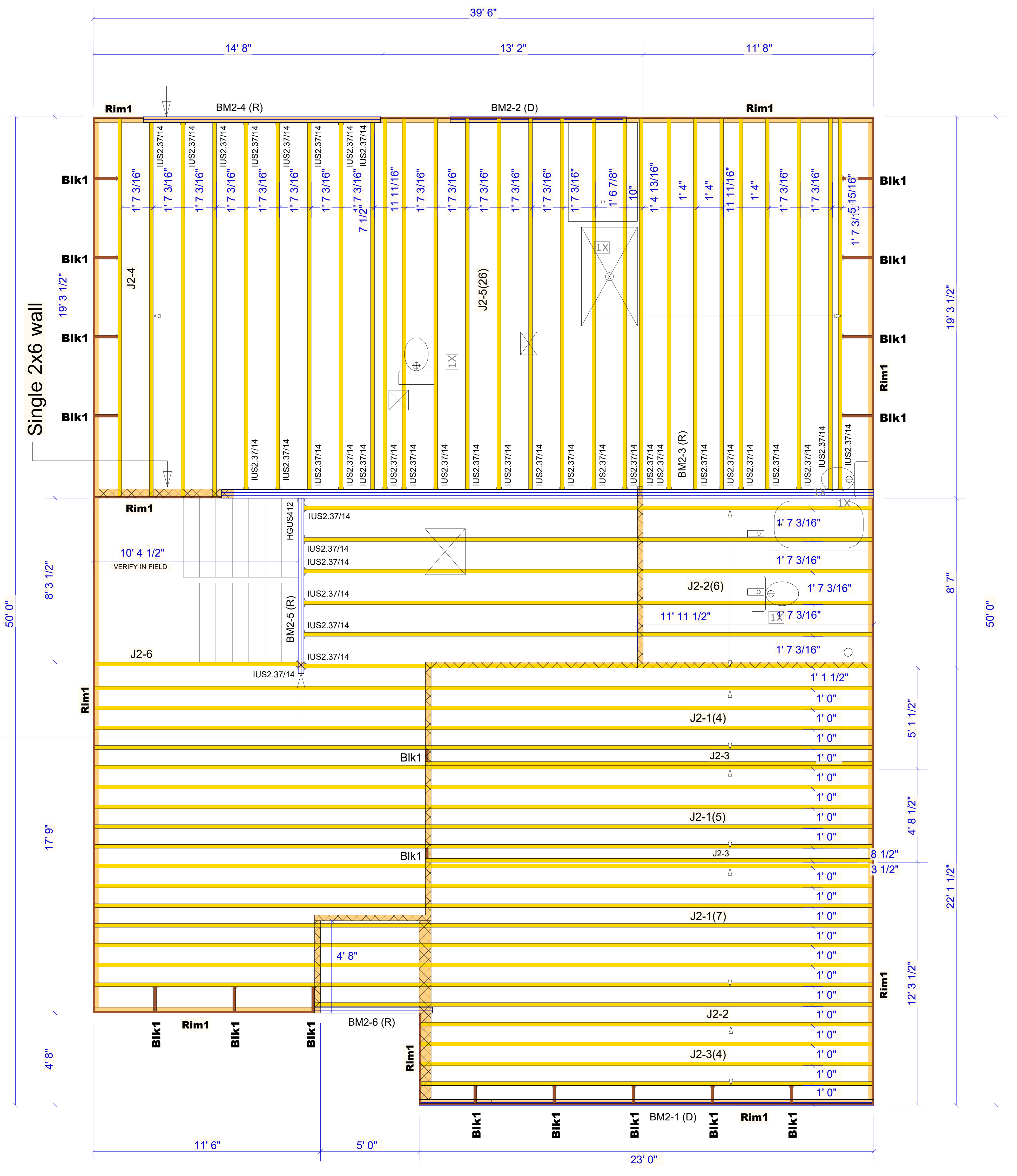


WARNING! Long span trusses, 60' or greater in length, require extreme care and experience for proper and safe handling and installation. For general handling and installation guidance, see the "Guide to Good Practice for Handling, Installing, Restraining & Bracing of Metal Plate Connected Wood Trusses" (BCSI™), JOINTLY PRODUCED BY SBCA and TPI. For project specific guidance, consult with a registered design professional. ATLANTIC assumes no responsibility for the handling, installation or bracing of trusses.

Extend this beam on both ends to accommodate the hangers.

Extend this beam on this end to accommodate the hangers.



Products				
PlotID	Length	Product	Plies	Net Qty
J2-1	40' 0"	14" BCI@ 6000s-1.8	1	16
J2-2	29' 0"	14" BCI@ 6000s-1.8	1	7
J2-3	23' 0"	14" BCI@ 6000s-1.8	1	6
J2-4	20' 0"	14" BCI@ 6000s-1.8	1	1
J2-5	19' 0"	14" BCI@ 6000s-1.8	1	26
J2-6	11' 0"	14" BCI@ 6000s-1.8	1	1
BM2-1 (D)	24' 0"	1-3/4" x 11-7/8" VERSA-LAM@ 2.0 3100 SP	2	2
BM2-2 (D)	10' 0"	1-3/4" x 11-7/8" VERSA-LAM@ 2.0 3100 SP	2	2
BM2-3 (R)	34' 0"	1-3/4" x 14" VERSA-LAM@ 2.0 3100 SP	3	3
BM2-4 (R)	12' 0"	1-3/4" x 14" VERSA-LAM@ 2.0 3100 SP	2	2
BM2-5 (R)	10' 0"	1-3/4" x 14" VERSA-LAM@ 2.0 3100 SP	2	2
BM2-6 (R)	6' 0"	1-3/4" x 14" VERSA-LAM@ 2.0 3100 SP	2	2
Rim1	12' 0"	1-1/8" x 14" BC RIM BOARD OSB	1	14
Blk1	2' 0"	14" BLOCKING	1	18

Connector Summary			
Qty	Manuf	Product	Flange
1	Simpson	HGUS412	None
38	Simpson	IUS2.37/14	None

Backer blocks are required for all hangers supported by I-joists.

SEE NOTE IN THE EASTERN SPECIFIER GUIDE (F10) AND (F58) FOR ANY JOIST TO JOIST, DOUBLE JOIST CONNECTIONS. SEE WEB STIFFENER REQUIREMENTS FOR HANGERS THAT DO NOT LATERALLY SUPPORT THE TOP FLANGE.

▲ = LEFT END OF TRUSS

FOR PERMIT



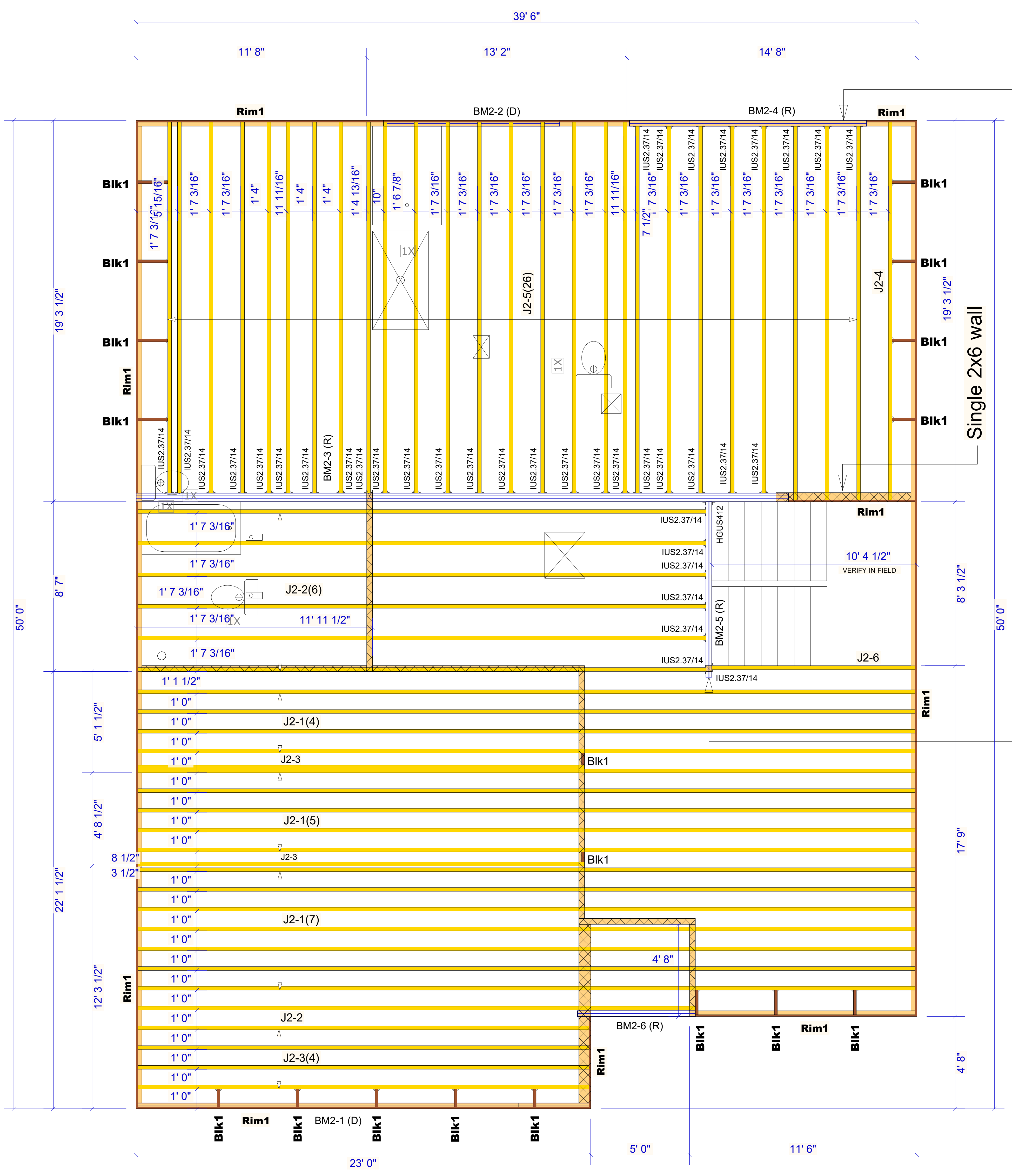
Moncks Corner/Easley, SC (800) 475-3999
Sparta, NC (336) 372-2226

REVISIONS:

Client:	MATTAMY HOMES-RALEIGH		
Job:	LOT 10 PROVIDENCE CREEK		
Plan Information:	VOYAGEUR-CR		
NOT TO SCALE	Date:	05/30/24	
Drawn By:	MBB	Job #:	24-5028-J02
		Sales Rep:	KYLE GIBSON
		Phone:	

S15101-1

WARNING! Long span trusses, 60' or greater in length, require extreme care and experience for proper and safe handling and installation. For general handling and installation guidance, see the "Guide to Good Practice for Handling, Installing, Restraining & Bracing of Metal Plate Connected Wood Trusses (BCSI)", JOINTLY PRODUCED BY SBCA and TPI. For project specific guidance, consult with a registered design professional. ATLANTIC assumes no responsibility for the handling, installation or bracing of trusses.



Extend this beam on both ends to accommodate the hangers.

Extend this beam on this end to accommodate the hangers.

Connector Summary			
Flange	Product	Manuf	Qty
None	HGUS412	Simpson	1
None	IUS2.37/14	Simpson	38

Backer blocks are required for all hangers supported by I-joists.

SEE NOTE IN THE EASTERN SPECIFIER GUIDE (F10) AND (F58) FOR ANY JOIST TO JOIST, DOUBLE JOIST CONNECTIONS. SEE WEB STIFFENER REQUIREMENTS FOR HANGERS THAT DO NOT LATERALLY SUPPORT THE TOP FLANGE.

Products					
Net Qty	Plies	Product	Length	PlotID	
16	1	14" BCI® 6000s-1.8	40' 0"	J2-1	
7	1	14" BCI® 6000s-1.8	29' 0"	J2-2	
6	1	14" BCI® 6000s-1.8	23' 0"	J2-3	
1	1	14" BCI® 6000s-1.8	20' 0"	J2-4	
26	1	14" BCI® 6000s-1.8	19' 0"	J2-5	
1	1	14" BCI® 6000s-1.8	11' 0"	J2-6	
2	2	1-3/4" x 11-7/8" VERSA-LAM® 2.0 3100 SP	24' 0"	BM2-1 (D)	
2	2	1-3/4" x 11-7/8" VERSA-LAM® 2.0 3100 SP	10' 0"	BM2-2 (D)	
3	3	1-3/4" x 14" VERSA-LAM® 2.0 3100 SP	34' 0"	BM2-3 (R)	
2	2	1-3/4" x 14" VERSA-LAM® 2.0 3100 SP	12' 0"	BM2-4 (R)	
2	2	1-3/4" x 14" VERSA-LAM® 2.0 3100 SP	10' 0"	BM2-5 (R)	
2	2	1-3/4" x 14" VERSA-LAM® 2.0 3100 SP	6' 0"	BM2-6 (R)	
14	1	1-1/8" x 14" BC RIM BOARD OSB	12' 0"	Rim1	
18	1	14" BLOCKING	2' 0"	Blk1	

▲ = LEFT END OF TRUSS

FOR PERMIT



Moncks Corner/Easley, SC (800) 475-3999
Sparta, NC (336) 372-2226

REVISIONS:

Client:	MATTAMY HOMES-RALEIGH
Job:	LOT 10 PROVIDENCE CREEK
Plan Information:	VOYAGEUR-CR
NOT TO SCALE	Date: 05/30/24
Drawn By:	Job #: Sales Rep: KYLE GIBSON MBB 24-5028-J02 Phone:

ST1010-1