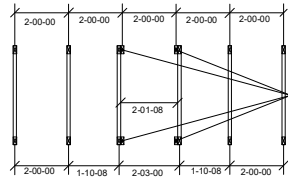


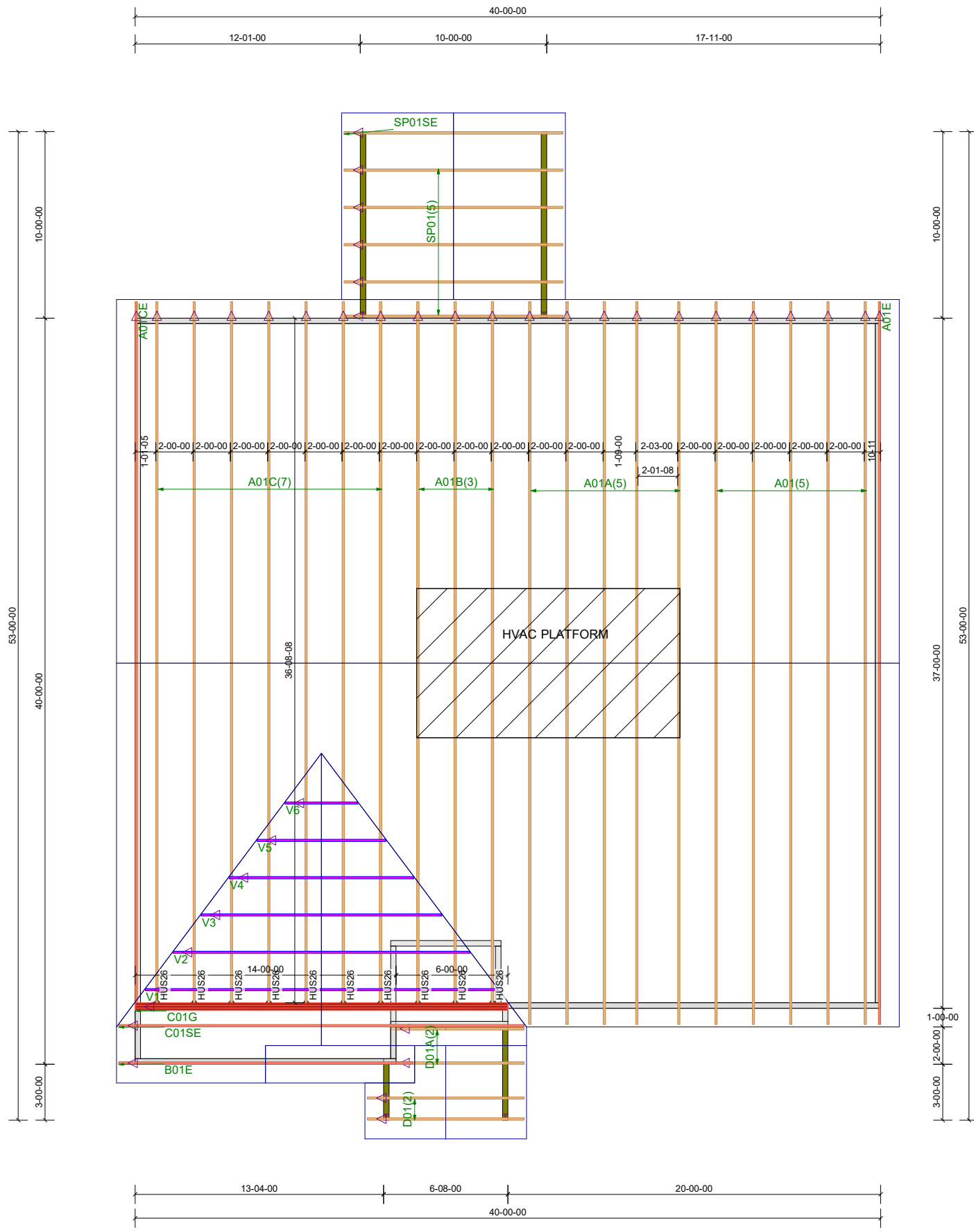
THE PURPOSE OF THIS DETAIL IS TO ILLUSTRATE HOW TO PROPERLY SPACE 24" O.C. ROOF TRUSSES TO ALLOW FOR A 25 1/2" OPENING FOR PULL DOWN ATTIC ACCESS

TRUSSES TO BE DESIGNED AT 24" ON CENTER



TRUSS LAYOUT DIMENSIONS AT PULL DOWN ATTIC ACCESS

Truss Connector Total List		
Manuf	Product	Qty
Simpson	HUS26	10



84 Components  
200 Emmett Rd  
Dunn NC 28334  
United States  
Office: 770-787-8715

**KB HOMES**  
**25 BIRCHWOOD GROVE**  
**25 BIRCHWOOD GROVE**  
**Job# - P01744**

Location	2383-Dunn* (Differs)
Designer	INIT

DO NOT CUT, NOTCH, OR BORE HOLES UNLESS SPECIFIC WRITTEN PERMISSION IS PROVIDED BY AN AUTHORIZED REPRESENTATIVE OF 84 LUMBER.

TRUSS INSTALLATION REQUIRES TEMPORARY AND PERMANENT BRACING. GENERAL GUIDANCE IS PROVIDED IN SBCA DOC'S B-1 and B-3. THESE ARE INCLUDED WITH EACH JOB IN YOUR TRUSS PACKET.

Sheet # **1** of **1**

**Roof Truss Placement Plan**

NOT TO SCALE

DESIGNED DATE

5/24/2024