

I, MICHAEL P. GRIFFIN, certify that under my direction and supervision this map was drawn from an actual field survey; that the error of closure of the survey as calculated by coordinates is 1: 10,000+; that the area shown hereon was calculated by coordinates.

Witness my hand and seal this day of MONTH 2024.

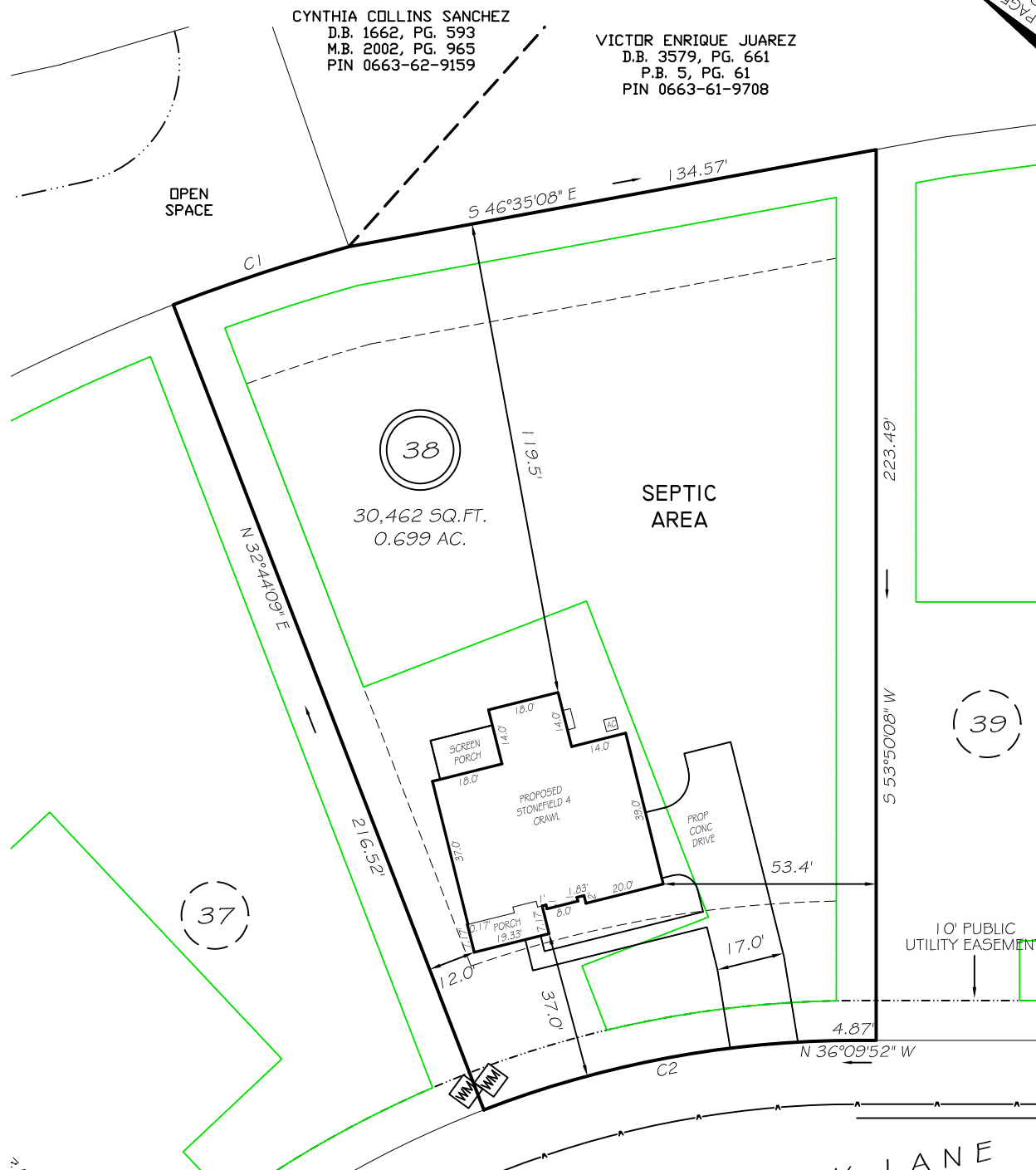
ZONING RA-30  
SETBACKS

FRONT 35'  
REAR 25'  
SIDE 10'  
CORNER SIDE 20'

CYNTHIA COLLINS SANCHEZ  
D.B. 1662, PG. 593  
M.B. 2002, PG. 965  
PIN 0663-62-9159

VICTOR ENRIQUE JUAREZ  
D.B. 3579, PG. 661  
P.B. 5, PG. 61  
PIN 0663-61-9708

EM 2023 PAGE 248-249  
HARNETT CO. REGISTRY



IMPERVIOUS AREAS

HOUSE	2449 SQ. FT.
DRIVE & WALKS	1580 SQ. FT.
AVC PAD	9 SQ. FT.
<b>TOTAL</b>	<b>4038 SQ. FT.</b>
ALLOWED	4130 SQ. FT.

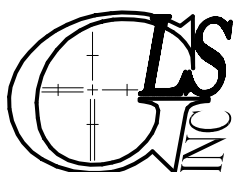
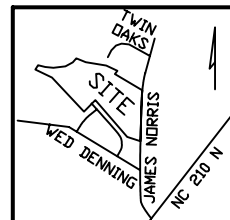
C1 R=475.46' L=46.44' S54°28'10"E 46.42'  
C2 R=260.00' L=95.75' N46°42'52"W 95.21'

SHELBY MEADOW LANE  
60' PUBLIC RW & UTILITY

**P R E L I M I N A R Y**  
NOT FOR RECORDATION,  
SALES OR CONVEYANCE

LEGEND

EIP	EXISTING IRON PIPE	FES	FLARED END SECTION
IPS	IRON PIPE SET	WM	WATER METER
R/W	RIGHT OF WAY	CO	CLEAN OUT
N/F	NOW OR FORMERLY	FH	FIRE HYDRANT
EIS	EXISTING IRON STAKE	CB	CATCH BASIN



GRIFFIN LAND SURVEYING, INC.

P.O. BOX 148  
FUQUAY-VARINA, NC 27526  
(919) - 567 - 1963

PLOT PLAN  
FOR

**DRB HOMES**

HONEYCUTT HILLS

LOT 38

246 SHELBY MEADOW LANE

ANGIER, N.C.

HARNETT COUNTY BLACK RIVER TOWNSHIP

DRAWN BY **KDF**

DATE **5/22/24**

CHECKED BY **MPG**

SCALE **1" = 40'**