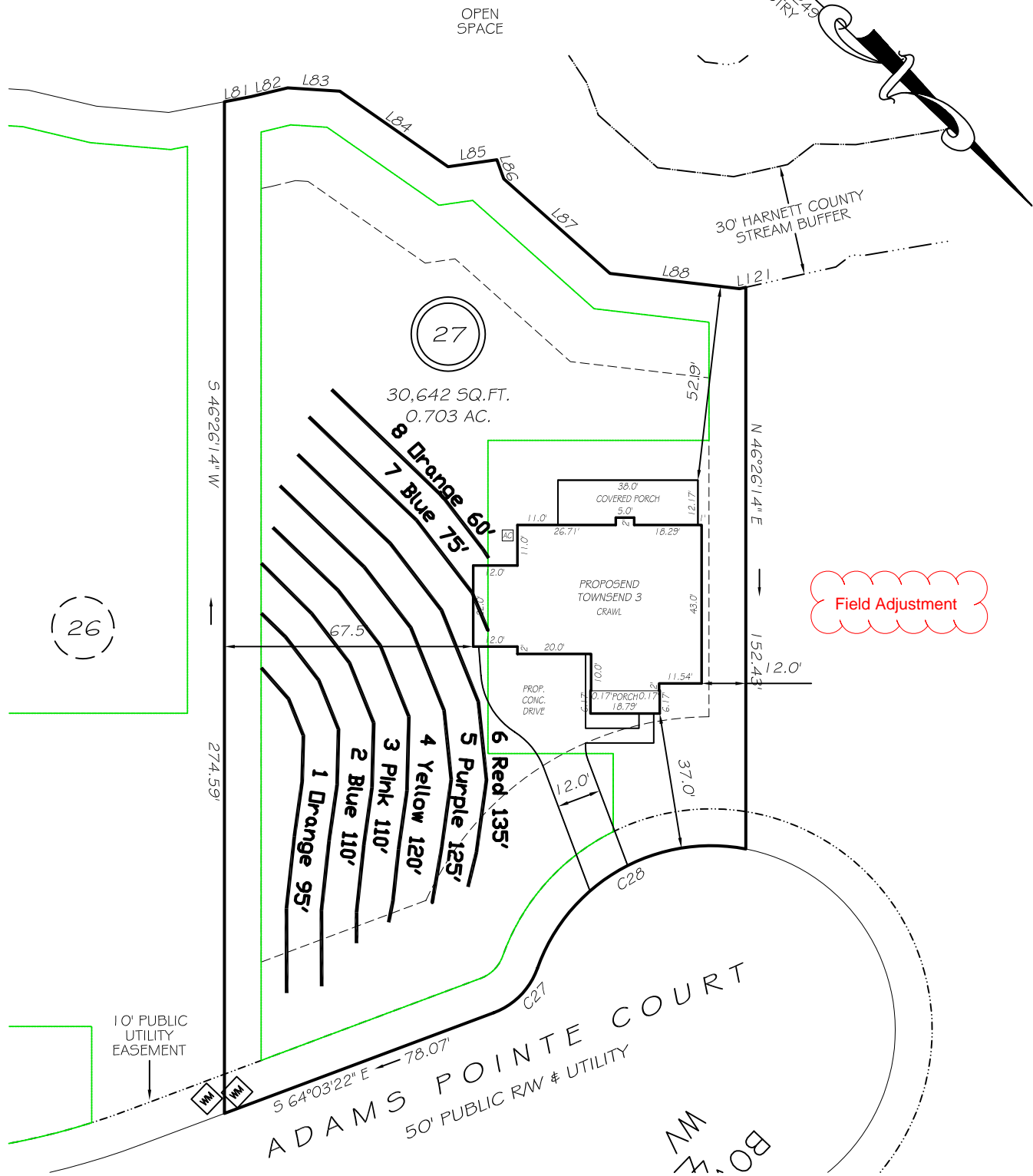


I, MICHAEL P. GRIFFIN, certify that under my direction and supervision this map was drawn from an actual field survey; that the error of closure of the survey as calculated by coordinates is 1: 10,000+; that the area shown hereon was calculated by coordinates.

Witness my hand and seal this day of MONTH 2024.

BM 2023 PAGE 248-249  
HARNETT CO. REGISTRY



L81	N 54°27'44" W	7.39'
L82	N 57°05'44" W	10.19'
L83	N 39°48'21" W	14.20'
L84	N 08°39'08" W	35.82'
L85	N 51°50'38" W	13.40'
L86	N 26°33'54" E	5.54'
L87	N 01°50'52" W	38.60'
L88	N 36°52'12" W	35.44'
L121	N 56°18'36" W	1.73'
C27	R=20.00' L=17.45' S 89°03'13" E 16.90'	
C28	R=50.00' L=71.01' S 73°22'05" E 65.19'	

IMPERVIOUS AREAS

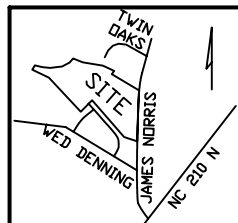
HOUSE	2869 SQ. FT.
DRIVE & WALKS	1194 SQ. FT.
AVG PAD	9 SQ. FT.
TOTAL	4072 SQ. FT.
ALLOWED	4130 SQ. FT.

ZONING RA-30  
SETBACKS

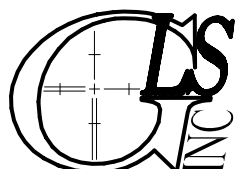
FRONT	35'
REAR	25'
SIDE	10'
CORNER SIDE	20'

LEGEND

EIP	EXISTING IRON PIPE	FES	FLARED END SECTION
IPS	IRON PIPE SET	WM	WATER METER
R/W	RIGHT OF WAY	CO	CLEAN OUT
N/F	NOW OR FORMERLY	FH	FIRE HYDRANT
EIS	EXISTING IRON STAKE	CB	CATCH BASIN



**PRELIMINARY**  
NOT FOR RECORDATION,  
SALES OR CONVEYANCE



**GRIFFIN LAND SURVEYING, INC.**  
P. O. BOX 148  
FUQUAY-VARINA, NC 27526  
(919) - 567-1963

PLOT PLAN  
FOR  
**DRB HOMES**

HONEYCUTT HILLS

LOT 27

467 ADAMS POINTE COURT

ANGIER, N.C.

HARNETT COUNTY BLACK RIVER TOWNSHIP

DRAWN BY KDF

DATE 5/9/24

CHECKED BY MPG

SCALE 1" = 40'