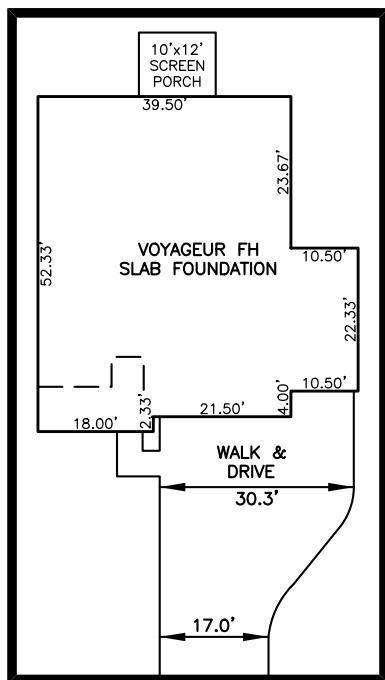
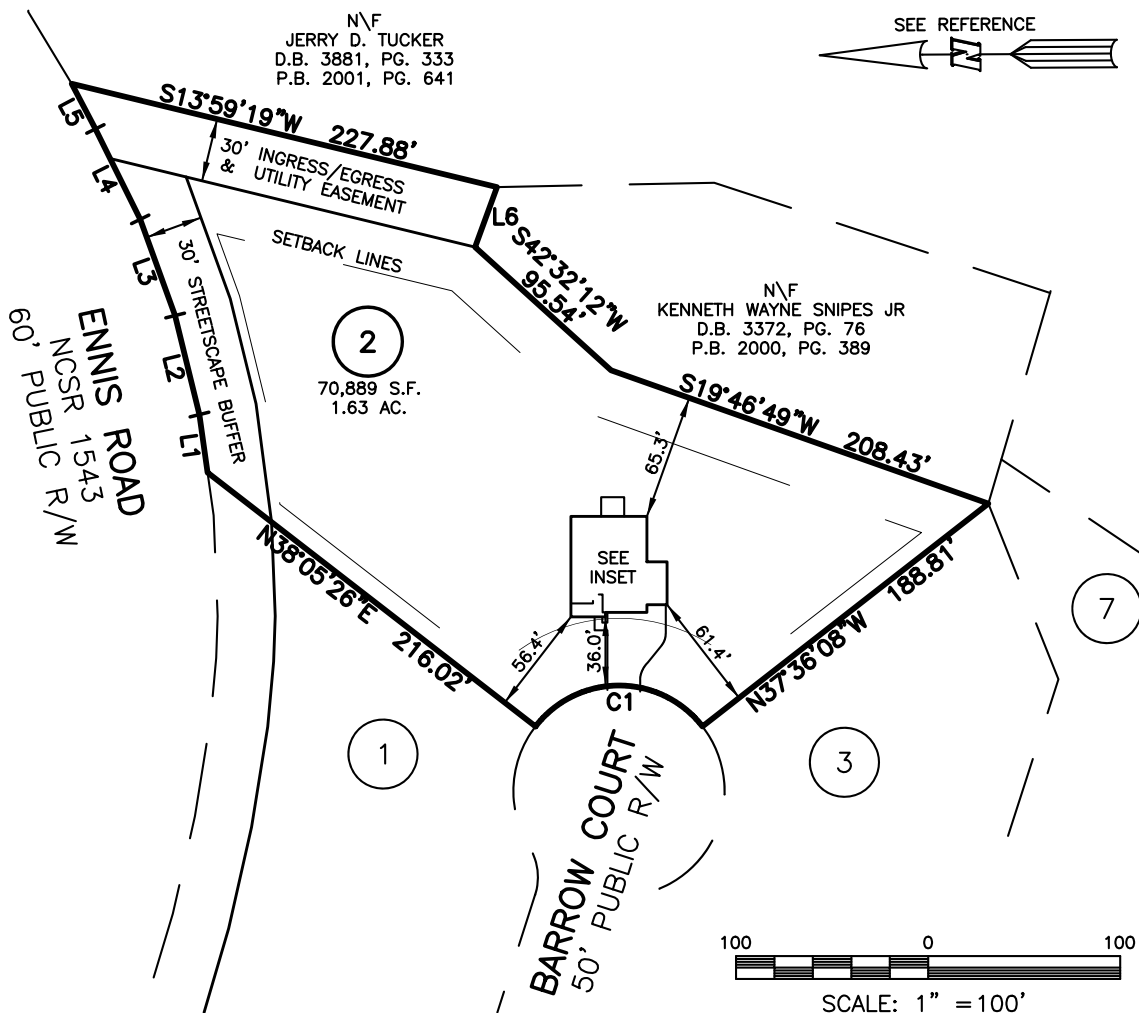


PLOT PLAN FOR
MATTAMY HOMES, LLC.
 XX BARROW COURT
 LOT 02, RIVERFALL SUBDIVISION, PHASE ONE
 BLACK RIVER TOWNSHIP, HARNETT COUNTY, NORTH CAROLINA

N\F
 JERRY D. TUCKER
 D.B. 3881, PG. 333
 P.B. 2001, PG. 641

SEE REFERENCE



NUM	RADIUS	ARC	DELTA	CHORD BRG	CHORD
C1	55.00'	100.30'	104°29'13"	N00°20'03"E	86.97'

LINE	BEARING	DISTANCE
L1	N82°21'53"E	30.45'
L2	N76°32'19"E	53.13'
L3	N70°23'02"E	53.29'
L4	N63°57'09"E	52.55'
L5	N62°41'01"E	26.53'
L6	N69°42'02"W	33.24'

IMPERVIOUS SURFACES	S.F.
HOUSE	2,250
WALK & DRIVE	1,040
PORCH	120
TOTAL	3,410
MAX. IMPERVIOUS	5,500

LEGEND

- | | |
|---|--|
| <ul style="list-style-type: none"> □ AIR CONDITIONER ▭ BACK OF CURB ▭ BACK FLOW PREVENTER ○ CLEANOUT ▭ CURB INLET ⊙ DRILL HOLE SET ▭ EXISTING CONCRETE MONUMENT ⊙ EXISTING DRILL HOLE ⊙ EXISTING IRON STAKE ⊙ EXISTING IRON PIPE ⊙ ELECTRIC METER ⊙ EXISTING PK NAIL ⊙ ELECTRIC STUB ⊙ FLARED END SECTION ⊙ FIRE HYDRANT ⊙ FIBER OPTIC PEDESTAL ⊙ GAS METER → GUY | <ul style="list-style-type: none"> INV. INVERT IPS IRON PIPE SET IRS IRON ROD SET ⊙ LIGHT POLE MNS MAGNETIC NAIL SET ⊙ MANHOLE SANITARY SEWER ⊙ MANHOLE STORM SEWER OHV OVERHEAD WIRES PKS PK NAIL SET PNS POINT NOT SET RRS RAIL ROAD SPIKE ⊙ TELEPHONE PEDESTAL ⊙ TRANSFORMER ⊙ CABLE TV PEDESTAL ⊙ UTILITY POLE ⊙ WATER METER ⊙ WATER VALVE ⊙ YARD INLET () FIELD MEASUREMENT |
|---|--|

SETBACK INFO

FRONT: 35'
 REAR: 25'
 SIDES: 10'

REFERENCES:

B.M. 2023, PG. 638

NOTES

1. THIS SURVEY SUBJECT TO ANY FACTS THAT MAY BE DISCLOSED BY A FULL AND ACCURATE TITLE SEARCH.
2. THIS MAP MAY NOT BE A CERTIFIED SURVEY AND HAS NOT BEEN REVIEWED BY A LOCAL GOVERNMENT AGENCY FOR COMPLIANCE WITH ANY APPLICABLE LAND DEVELOPMENT REGULATIONS AND HAS NOT BEEN REVIEWED FOR COMPLIANCE WITH RECORDING REQUIREMENTS FOR PLATS.

PLOT PLAN
 PRELIMINARY PLAT- NOT FOR RECORDATION,
 CONVEYANCE OR SALES

REV CODE: 1.FLIP, 2.PLAN, 3.ROTATE, 4.MOVE, 5.SS
 6.SEVERAL OF ABOVE, 7.LAND FEATURE, 8. OTHER

DATE: MAY 31, 2024

F.B. _____

RWK, PA
 ENGINEERING ~ SURVEYING
 CORPORATE LICENSE: C-1771
 101 W. MAIN ST., SUITE 202
 GARNER, NC 27529
 PHONE (919) 779-4854
 FAX (919) 779-4056