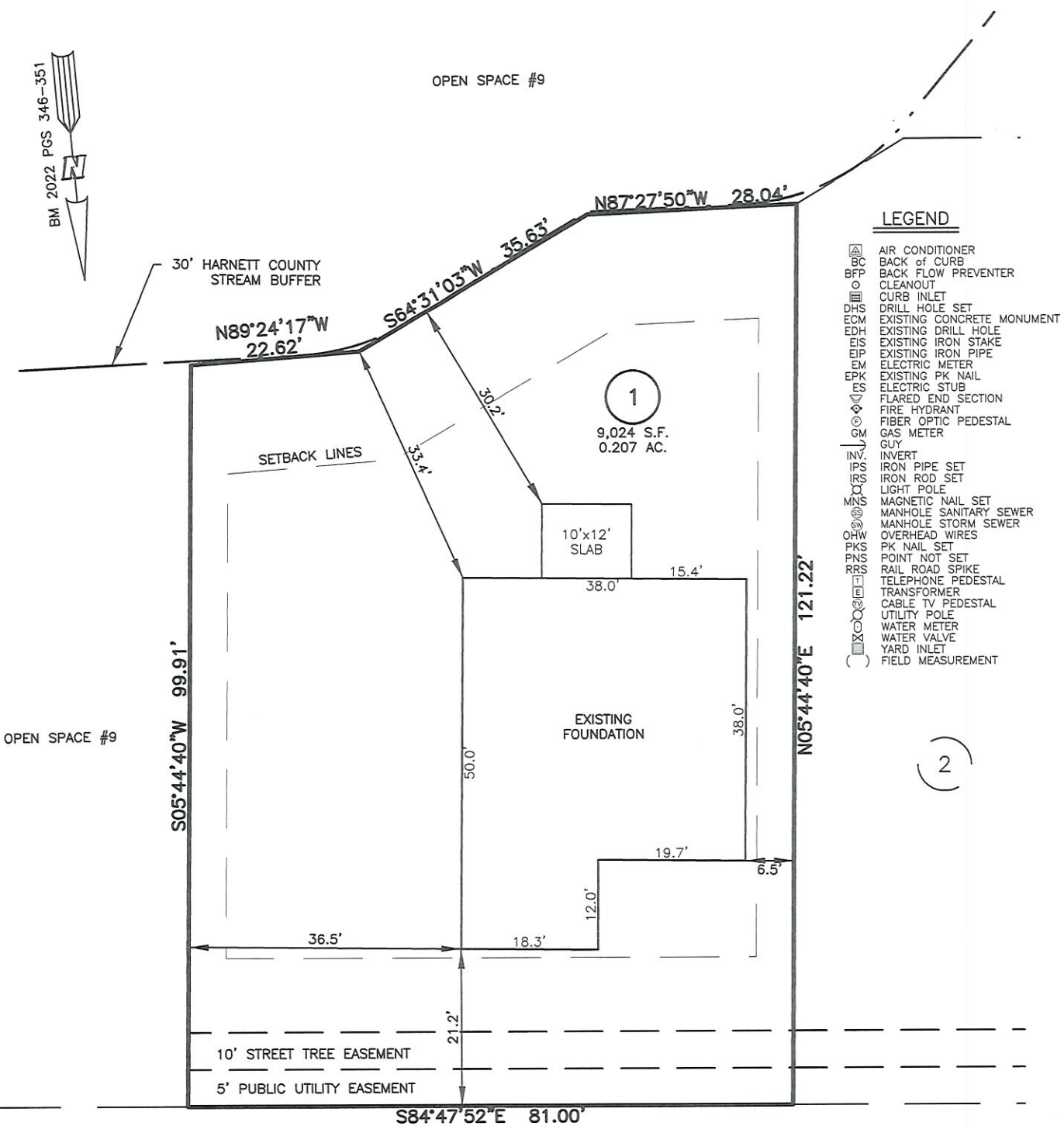


AS-BUILT IMPROVEMENTS FOR
MATTAMY HOMES
 81 PROVIDENCE CREEK DRIVE
 LOT 1, PROVIDENCE CREEK PHASE 1
 HECTORS CREEK AND BLACK RIVER TOWNSHIP, HARNETT COUNTY, NORTH CAROLINA



LEGEND

△	AIR CONDITIONER
BC	BACK of CURB
BFP	BACK FLOW PREVENTER
○	CLEANOUT
■	CURB INLET
DHS	DRILL HOLE SET
ECM	EXISTING CONCRETE MONUMENT
EDH	EXISTING DRILL HOLE
EIS	EXISTING IRON STAKE
EIP	EXISTING IRON PIPE
EM	ELECTRIC METER
EPK	EXISTING PK NAIL
ES	ELECTRIC STUB
▽	FLARED END SECTION
▽	FIRE HYDRANT
○	FIBER OPTIC PEDESTAL
GM	GAS METER
GUY	GUY
INV.	INVERT
IPS	IRON PIPE SET
IRS	IRON ROD SET
○	LIGHT POLE
MNS	MAGNETIC NAIL SET
○	MANHOLE SANITARY SEWER
○	MANHOLE STORM SEWER
OHW	OVERHEAD WIRES
PKS	PK NAIL SET
PNS	POINT NOT SET
RRS	RAIL ROAD SPIKE
○	TELEPHONE PEDESTAL
○	TRANSFORMER
○	CABLE TV PEDESTAL
○	UTILITY POLE
○	WATER METER
○	WATER VALVE
○	YARD INLET
()	FIELD MEASUREMENT

OPEN SPACE #9

OPEN SPACE #9

S05°44'40"W 99.91'

N05°44'40"E 121.22'

S84°47'52"E 81.00'

THIS AS-BUILT IS
 FOR CODE COMPLIANCE.
 NOT FOR SALES OR
 CONVEYANCE

PROVIDENCE CREEK DRIVE
 50' PUBLIC R/W & UTILITY

SETBACK INFO

FRONT:	20'
REAR:	15'
SIDES:	5'
CORNER SIDE:	15'

WAKE COUNTY, NORTH CAROLINA
 I CERTIFY THAT THIS MAP WAS DRAWN UNDER MY
 SUPERVISION FROM FIELDWORK DONE UNDER
 MY SUPERVISION; THAT THE IMPROVEMENTS LIE
 WHOLLY UPON THE LOT AND THAT THE PROPERTY
 SHOWN IS AN EXISTING PARCEL OR PARCELS OF
 LAND.

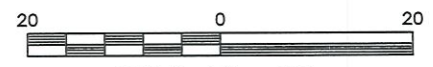
Charles R. Piratzky

7-9-24
 DATE

CHARLES R. PIRATZKY, P.L.S.
 L-2813



REFERENCES:
 BM 2022 PGS 346-351



SCALE: 1" = 20'

NOTES

1. THIS SURVEY SUBJECT TO ANY FACTS THAT MAY BE DISCLOSED BY A FULL AND ACCURATE TITLE SEARCH.
2. THIS MAP MAY NOT BE A CERTIFIED SURVEY AND HAS NOT BEEN REVIEWED BY A LOCAL GOVERNMENT AGENCY FOR COMPLIANCE WITH ANY APPLICABLE LAND DEVELOPMENT REGULATIONS AND HAS NOT BEEN REVIEWED FOR COMPLIANCE WITH RECORDING REQUIREMENTS FOR PLATS.

DATE: JULY 03, 2024
 Q:\FieldLoc\PCK 1 FDN.txt

RWK, PA
ENGINEERING ~ SURVEYING
 CORPORATE LICENSE: C-1771
 101 W. MAIN ST., SUITE 202
 GARNER, NC 27529
 PHONE (919) 779-4854
 FAX (919) 779-4056