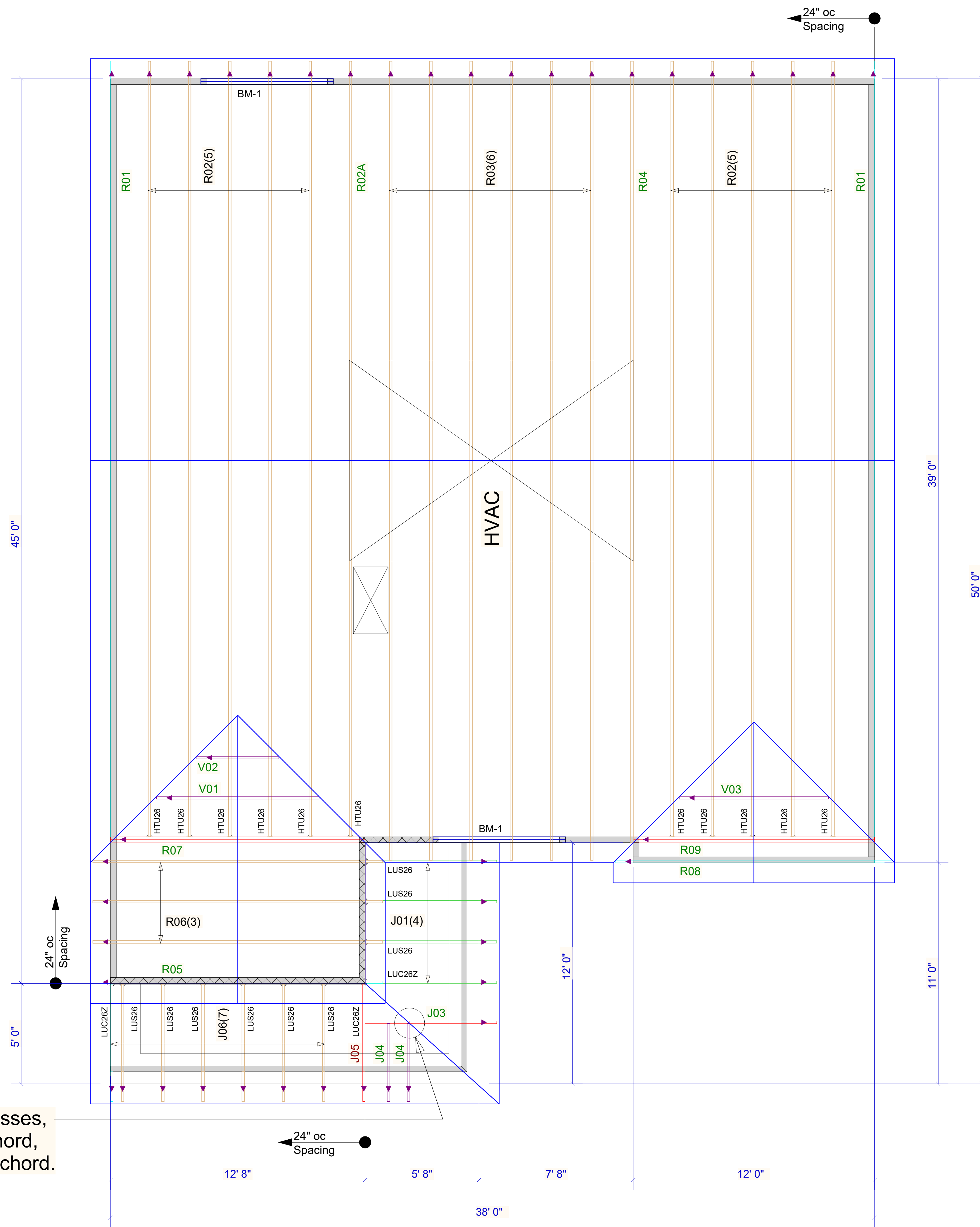


Products				
PlotID	Length	Product	Plies	Net Qty
BM-1	8' 0"	1-3/4" x 9-1/2" VERSA-LAM® 2.0 3100 SP	2	4

Truss Connector Total List		
Manuf	Product	Qty
Simpson	HTU26	11
Simpson	LUC26Z	3
Simpson	LUS26	9

For all small open-ended mono trusses, use (3) 10d toe nails in the top chord, and (3) 10d toe nails in the bottom chord.



▲ = LEFT END OF TRUSS

REVISIONS:

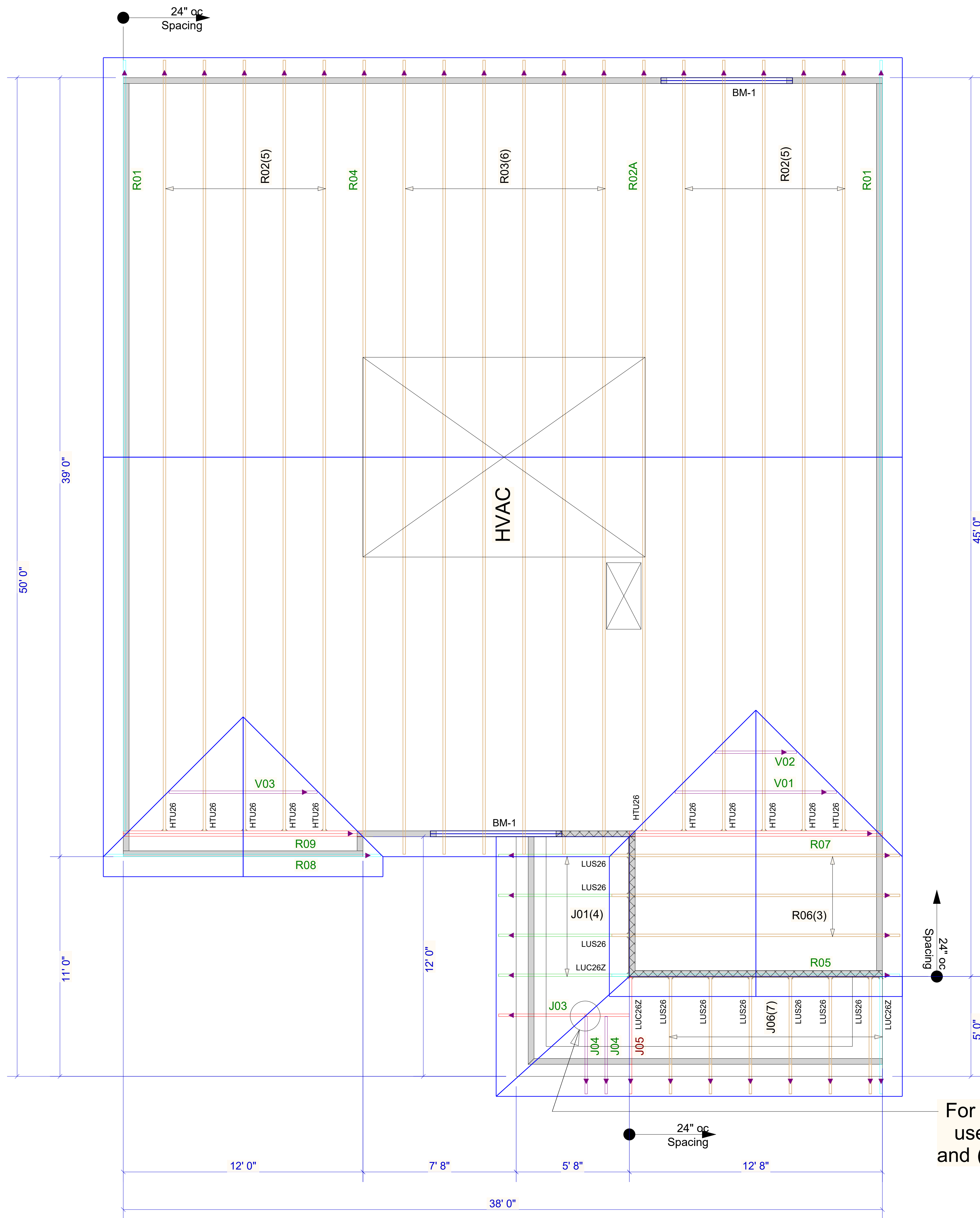


Moncks Corner/Easley, SC (800) 475-3999
Sparta, NC (336) 372-2226

FOR PERMIT

Client: MATTAMY HOMES-RALEIGH		ROOF
Job: LOT 1 PROVIDENCE CREEK		
Plan Information: SHENANDOAH-CR		
NOT TO SCALE	Date: 05/14/24	
Drawn By: MBB	Job #: 24-4510-R01	Sales Rep: KYLE GIBSON
		Phone:

WARNING! Long span trusses, 60' or greater in length, require extreme care and experience for proper and safe handling and installation. For general handling and installation guidance, see the "Guide to Good Practice for Handling, Installing, Restraining & Bracing of Metal Plate Connected Wood Trusses ("BCSI"), JOINTLY PRODUCED BY SBCA and TPI. For project specific guidance, consult with a registered design professional. ATLANTIC assumes no responsibility for the handling, installation or bracing of trusses.



Products					
Net Qty	Plies	Product	Length	PlotID	
4	2	1-3/4" x 9-1/2" VERSA-LAM® 2.0 3100 SP	8' 0"	BM-1	

Truss Connector Total List		
Qty	Product	Manuf
11	HTU26	Simpson
3	LUC26Z	Simpson
9	LUS26	Simpson

For all small open-ended mono trusses, use (3) 10d toe nails in the top chord, and (3) 10d toe nails in the bottom chord.

▲ = LEFT END OF TRUSS

FOR PERMIT

Client: **MATTAMY HOMES-RALEIGH**
 Job: **LOT 1 PROVIDENCE CREEK**
 Plan Information:
SHENANDOAH-CR
 NOT TO SCALE
 Date: 05/14/24
 Drawn By: MBB
 Sales Rep: KYLE GIBSON
 Job #: 24-4510-R01
 Phone:

REVISIONS:



Moncks Corner/Easley, SC (800) 475-3999
 Sparta, NC (336) 372-2226