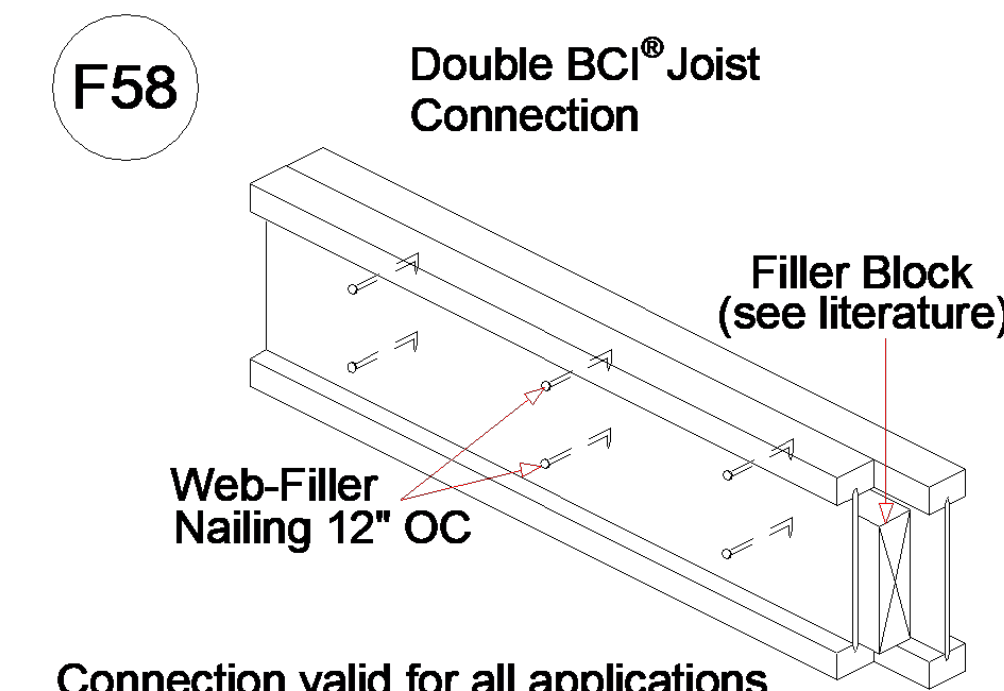


Backer blocks are required for all hangers supported by I-joists.

Connector Summary			
Qty	Manuf	Product	Flange
1	Simpson	HHUS410	None
3		HUC3514	None
13	Simpson	IUS2.37/14	None
4	Simpson	MIT3514-2	None

Products				
PlotID	Length	Product	Plies	Net Qty
J2-1	27' 0"	14" BCI® 6000s-1.8	1	3
J2-2	27' 0"	14" BCI® 6000s-1.8	2	4
J2-3	21' 0"	14" BCI® 6000s-1.8	1	4
J2-4	21' 0"	14" BCI® 6000s-1.8	2	6
J2-5	18' 0"	14" BCI® 6000s-1.8	1	30
J2-6	18' 0"	14" BCI® 6000s-1.8	2	4
J2-7	13' 0"	14" BCI® 6000s-1.8	1	4
J2-8	9' 0"	14" BCI® 6000s-1.8	1	2
J2-9	6' 0"	14" BCI® 6000s-1.8	1	7
J2-10	6' 0"	14" BCI® 6000s-1.8	2	2
BM2-1	8' 0"	1-3/4" x 9-1/2" VERSA-LAM® 2.0 3100 SP	2	2
BM2-2	10' 0"	1-3/4" x 11-7/8" VERSA-LAM® 2.0 3100 SP	2	2
BM2-3	10' 0"	1-3/4" x 14" VERSA-LAM® 2.0 3100 SP	2	2
BM2-4	8' 0"	1-3/4" x 14" VERSA-LAM® 2.0 3100 SP	2	2
BM2-5	22' 0"	1-3/4" x 18" VERSA-LAM® 2.0 3100 SP	3	3
Rim1	12' 0"	1-1/8" x 14" BC RIM BOARD OSB	1	17
Blk1	2' 0"	14" BLOCKING	1	36

Connect all 2-ply joists in the field per detail F58.



Connection valid for all applications. Contact Boise EWP Engineering for specific conditions.

FOR PERMIT

Client:	MATTAMY HOMES-RALEIGH
Job:	LOT 1 PROVIDENCE CREEK
Plan Information:	SHENANDOAH-CR OPTIONS
NOT TO SCALE	Date: DATE
Drawn By:	MBB
	Job #: 24-4510-J02
	Sales Rep: KYLE GIBSON
	Phone:

▲ = LEFT END OF TRUSS

REVISIONS:



Moncks Corner/Easley, SC (800) 475-3999  
Spartan, NC (336) 372-2226

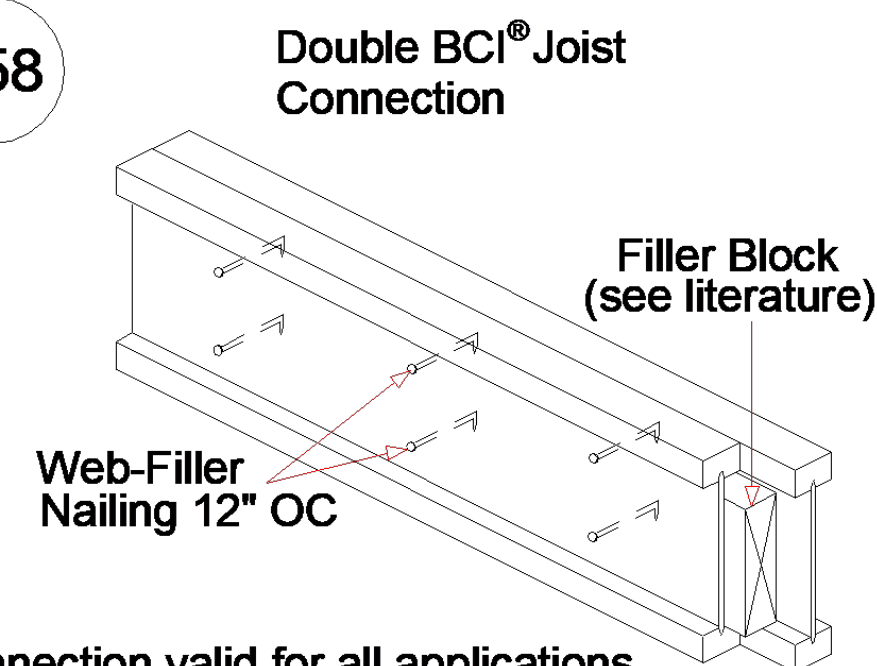
Backer blocks are required for all hangers supported by I-joists.

Connector Summary			
Flange	Product	Manuf	Qty
None	HHUS410	Simpson	1
None	HUC3514		3
None	IUS2.37/14	Simpson	13
None	MIT3514-2	Simpson	4

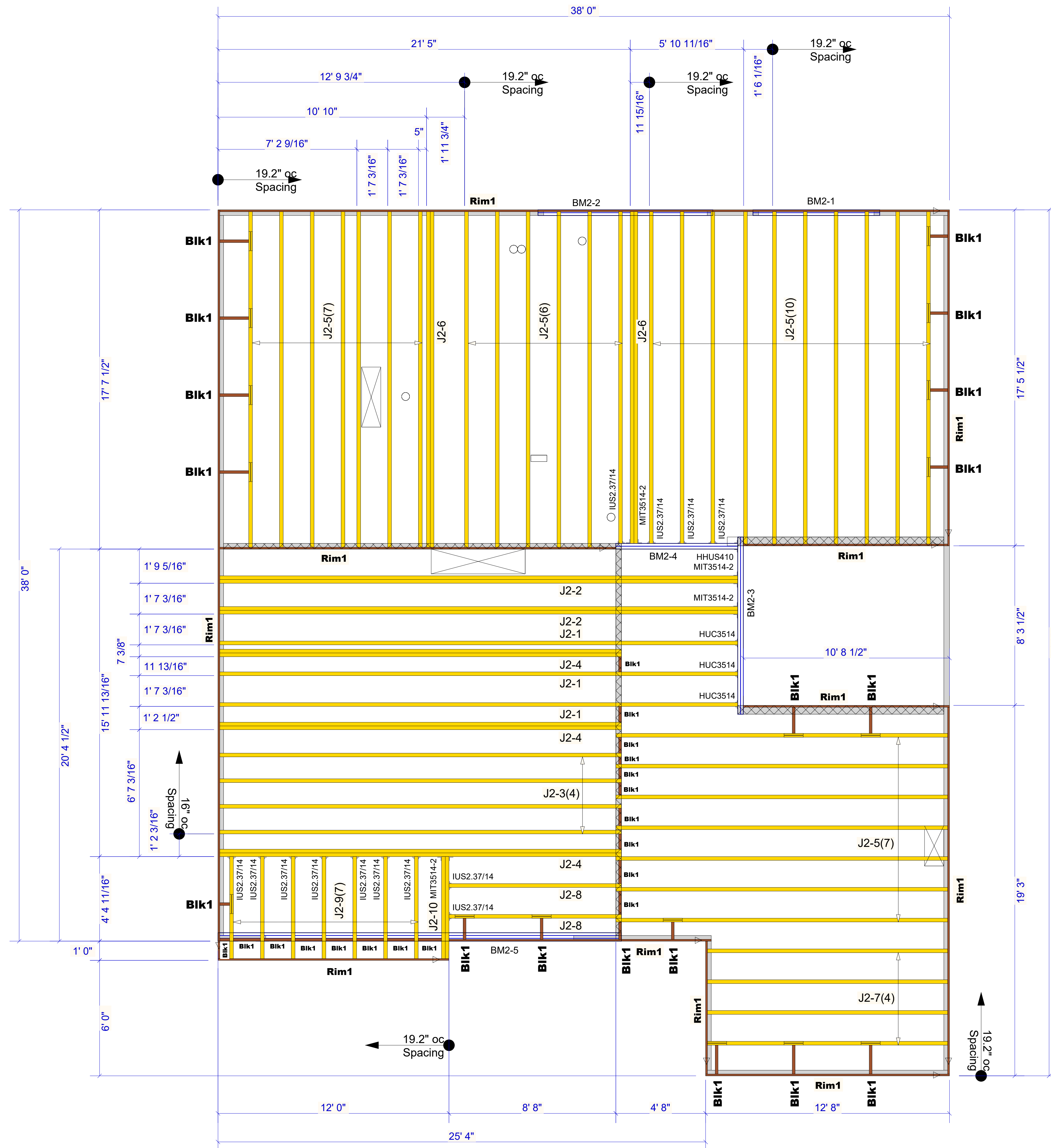
Products					
Net Qty	Plies	Product	Length	PlotID	
3	1	14" BCI@ 6000s-1.8	27' 0"	J2-1	
4	2	14" BCI@ 6000s-1.8	27' 0"	J2-2	
4	1	14" BCI@ 6000s-1.8	21' 0"	J2-3	
6	2	14" BCI@ 6000s-1.8	21' 0"	J2-4	
30	1	14" BCI@ 6000s-1.8	18' 0"	J2-5	
4	2	14" BCI@ 6000s-1.8	18' 0"	J2-6	
4	1	14" BCI@ 6000s-1.8	13' 0"	J2-7	
2	1	14" BCI@ 6000s-1.8	9' 0"	J2-8	
7	1	14" BCI@ 6000s-1.8	6' 0"	J2-9	
2	2	14" BCI@ 6000s-1.8	6' 0"	J2-10	
2	2	1-3/4" x 9-1/2" VERSA-LAM@ 2.0 3100 SP	8' 0"	BM2-1	
2	2	1-3/4" x 11-7/8" VERSA-LAM@ 2.0 3100 SP	10' 0"	BM2-2	
2	2	1-3/4" x 14" VERSA-LAM@ 2.0 3100 SP	10' 0"	BM2-3	
2	2	1-3/4" x 14" VERSA-LAM@ 2.0 3100 SP	8' 0"	BM2-4	
3	3	1-3/4" x 18" VERSA-LAM@ 2.0 3100 SP	22' 0"	BM2-5	
17	1	1-1/8" x 14" BC RIM BOARD OSB	12' 0"	Rim1	
36	1	14" BLOCKING	2' 0"	Blk1	

Connect all 2-ply joists in the field per detail F58.

F58

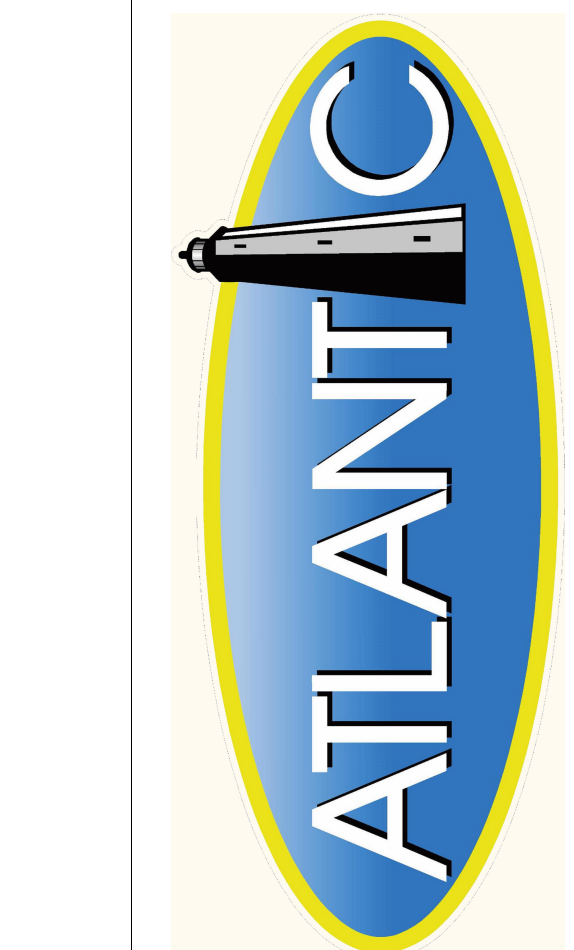


Connection valid for all applications. Contact Boise EWP Engineering for specific conditions.



▲ = LEFT END OF TRUSS

REVISIONS:



Moncks Corner/Easley, SC (800) 475-3999  
Sparta, NC (336) 372-2226

FOR PERMIT

Client:	MATTAMY HOMES-RALEIGH
Job:	LOT 1 PROVIDENCE CREEK
Plan Information:	SHENANDOAH-CR OPTIONS
Date:	DATE
Job #:	24-4510-J02
Drawn By:	MBB
Sales Rep:	KYLE GIBSON
Phone:	

LEVEL