

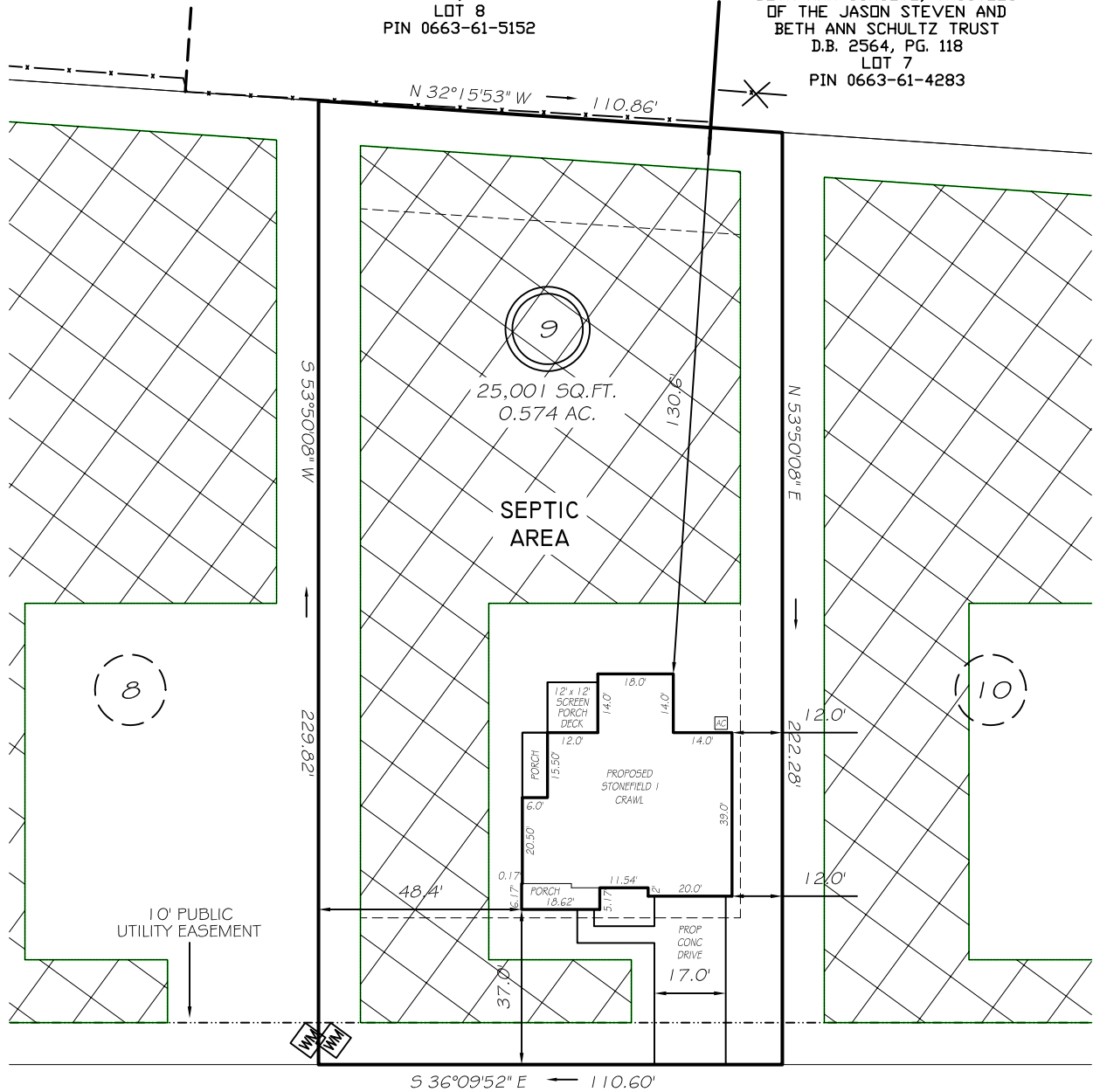
I, MICHAEL P. GRIFFIN, certify that under my direction and supervision this map was drawn from an actual field survey; that the error of closure of the survey as calculated by coordinates is 1: 10,000+; that the area shown hereon was calculated by coordinates.

Witness my hand and seal this day of MONTH 2024.

BM 2023 PAGE 248-249
HARNETT CO. REGISTRY

JOSEPH A. CUMMINGS
D.B. 4039, PG. 356
LOT 8
PIN 0663-61-5152

JASON S. SCHULTZ AND
BETH ANN SCHULTZ, TRUSTEES
OF THE JASON STEVEN AND
BETH ANN SCHULTZ TRUST
D.B. 2564, PG. 118
LOT 7
PIN 0663-61-4283



SHELBY MEADOW LANE

IMPERVIOUS AREAS

HOUSE	2382 SQ. FT.
DRIVE & WALKS	773 SQ. FT.
AVC PAD	9 SQ. FT.
TOTAL	3164 SQ. FT.
ALLOWED	4130 SQ. FT.

60' PUBLIC R/W & UTILITY

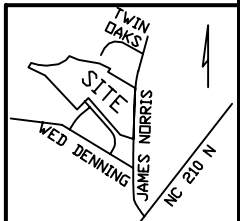
ZONING RA-30 SETBACKS

FRONT	35'
REAR	25'
SIDE	10'
CORNER SIDE	20'

P R E L I M I N A R Y
NOT FOR RECORDATION,
SALES OR CONVEYANCE

LEGEND

EIP	EXISTING IRON PIPE	FES	FLARED END SECTION
IPS	IRON PIPE SET	WM	WATER METER
R/W	RIGHT OF WAY	CO	CLEAN OUT
N/F	NOW OR FORMERLY	FH	FIRE HYDRANT
EIS	EXISTING IRON STAKE	CB	CATCH BASIN



GRIFFIN LAND SURVEYING, INC.

P.O. BOX 148
FUQUAY-VARINA, NC 27526
(919) - 567 - 1963

PLOT PLAN FOR

DRB HOMES

HONEYCUTT HILLS

LOT 9

177 SHELBY MEADOW LANE

ANGIER, N.C.

HARNETT COUNTY BLACK RIVER TOWNSHIP

DRAWN BY **KDF**

DATE **5/8/24**

CHECKED BY **MPG**

SCALE **1" = 40'**