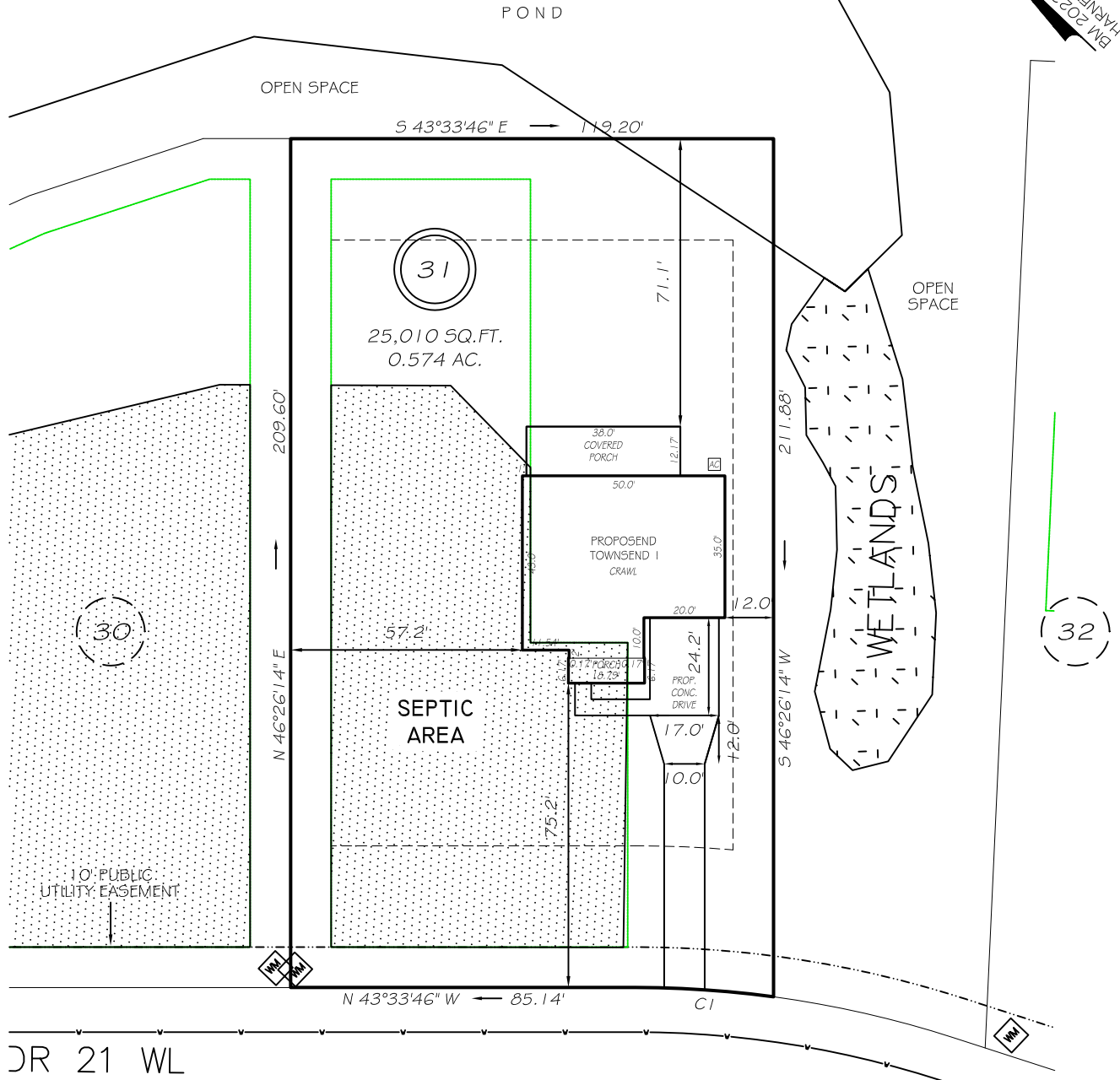


I, MICHAEL P. GRIFFIN, certify that under my direction and supervision this map was drawn from an actual field survey; that the error of closure of the survey as calculated by coordinates is 1: 10,000+; that the area shown hereon was calculated by coordinates.

Witness my hand and seal this 2ND day of MAY 2024.

BM 2023 PAGE 246 249
HARNETT CO. REGISTRY



DR 21 WL

ADAMS POINTE COURT
50' PUBLIC RAW & UTILITY

IMPERVIOUS AREAS

HOUSE	2605 SQ. FT.
DRIVE & WALKS	1218 SQ. FT.
PATIO	9 SQ. FT.
TOTAL	3832 SQ. FT.
ALLOWED	4130 SQ. FT.
C1 R=255.00' L=34.16' N39°43'31"W 34.13'	

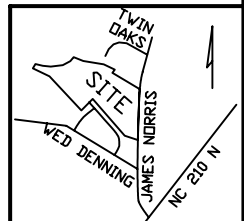
ZONING RA-30
SETBACKS

FRONT	35'
REAR	25'
SIDE	10'
CORNER SIDE	20'

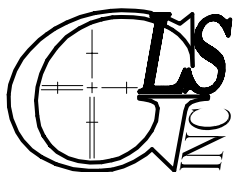
REVISION: MOVE FORWARD 7/24/24

LEGEND

EIP	EXISTING IRON PIPE	FES	FLARED END SECTION
IPS	IRON PIPE SET	WM	WATER METER
RAW	RIGHT OF WAY	CO	CLEAN OUT
N/F	NOW OR FORMERLY	FH	FIRE HYDRANT
EIS	EXISTING IRON STAKE	CB	CATCH BASIN



P R E L I M I N A R Y
NOT FOR RECORDATION,
SALES OR CONVEYANCE



GRIFFIN LAND SURVEYING, INC.
P.O. BOX 148
FUQUAY-VARINA, NC 27526
(919) - 567 - 1963

PLOT PLAN
FOR

DRB HOMES

HONEYCUTT HILLS

LOT 31

362 ADAMS POINTE COURT

ANGIER, N.C.

HARNETT COUNTY BLACK RIVER TOWNSHIP

DRAWN BY **KDF**

DATE **5/2/24**

CHECKED BY **MPG**

SCALE **1" = 40'**